

CHILEWICHCONTRACT.COM

2016 - 2017 CONTRACT COLLECTION

Volume 1

chilewich®

PLYNYL® TILE FLOORING

PLYNYL® W2W FLOORING

CUSTOM FLOOR MATS

CHILEWICHCONTRACT.COM

CHILEWICH SULTAN LLC 44 EAST 32ND STREET NEW YORK NY 10016
TEL 212 679 9204 FAX 212 679 9205 CHILEWICHCONTRACT.COM
CHILEWICH, PLYNYL, BIOFELT AND TERRASTRAND ARE REGISTERED TRADEMARKS.
For detailed specifications, installation and maintenance instructions,
please refer to chilewichcontract.com/technical
ITEM #: 900114-001 VOLUME 1
©2016 CHILEWICH SULTAN LLC. ALL RIGHTS RESERVED.
PHOTOS: VICTOR SCHRAGER. DESIGN: KAVANAGH DESIGN.
BACK COVER: W2W IN BLUE SPECKLE. TRACK BENCH: WEST NYC HOME.
FRONT COVER: CUSTOM FLOORMAT IN GREY PLAID. CHAIRS: LC3 LE CORBUSIER/
PIERRE JEANNERET/CHARLOTTE PERRIAND AND TABLE: 194 "9" TABLE PIERO
LISSONI. AVAILABLE AT CASSINA. LOCATION: CASSINA NEW YORK SOHO.



900114-001

2016

Vol.01

PLYNYL® TILE FLOORING

PLYNYL® W2W FLOORING

CUSTOM FLOOR MATS

chilewich

Over fifteen years ago, New York designer Sandy Chilewich introduced her first woven textiles to the international design community. Together with Joe Sultan, her architect husband and partner, Chilewich designs and produces a growing range of textiles. The collection is suitable for covering floors and walls, as well as windows and furniture in hotels, corporate offices, spas, restaurants and private residences. The firm's ongoing innovations in material development provide functional design solutions that are both modern and easy to maintain.

TerraStrand®

Microban®
antimicrobial product protection



ENVIRONMENTAL INITIATIVES

- Chilewich uses renewable vegetable based compounds in its fabrics. The yarns and the fabrics made from them are called TerraStrand®
- Chilewich products have 25% to 60% recycled and renewable content qualifying for LEED points
- Chilewich products are low VOC and qualify for LEED points as they comply with the Green Label Plus program
- Chilewich products contain Microban® and inhibit the growth of mold and mildew
- All Chilewich Contract products have up-to-date Health Product Declarations

CHILEWICH CONTRACT SPECIFICATIONS

Chilewich Contract meets or exceeds all industry specifications in the United States and Europe. For detailed and current specifications, please visit our website, www.chilewichcontract.com

All Chilewich Contract products are manufactured in the USA and ship from Chatsworth, Georgia and Barcelona, Spain.

Please visit chilewichcontract.com for weaves, colors and technical information.



Plynyl® Tile Flooring

Modular 18" (45.7cm) squares or 6" x 36" Rectangle Planks (15.2 x 91.4cm) for any application where a heavy duty floor covering is required. Chilewich signature woven textiles are bonded to either BioFelt® - an innovative felt backing system - or to a vinyl tile backing system. The recycled content of BioFelt® tiles now exceeds 55% in conjunction with the new TerraStrand® fabrics. Tiles can be installed with adhesives or with VELCRO® Brand Hook Squares — a dry installation system that can be removed without a trace.

Chilewich has been granted US Patent #US 7,326,661 for the tile's innovative components.

VELCRO® IS A REGISTERED TRADEMARK OF VELCRO INDUSTRIES B.V.

Plynyl® Tile in Taupe Speckle. Mr Brown London Chair: Julian Chichester.



Plynyl® W2W Flooring

Plynyl® is the name given to our flooring products when we first introduced them in 2001. And W2W is our abbreviated way of saying “wall to wall”, which is made in rolls by bonding our textiles to a soft, resilient cushion. The cushion contains postconsumer recycled content.

Plynyl® W2W in Blue Speckle. Track Bench: West NYC Home.

Custom Floor Mats

Custom floor mats can be fabricated out of any Plynyl® W2W style. The edges are finished with a unique to Chilewich “self-bound” edge, made by folding the face fabric over the edge of the mat and sewing it to provide a clean, finished edge.

Custom Floor Mat in Grey Plaid. Track Bench: West NYC Home. Mantis BS1 B Floor Lamp: DWR.





PLYNYL® SQUARE TILE FLOORING



PLYNYL® PLANK TILE FLOORING



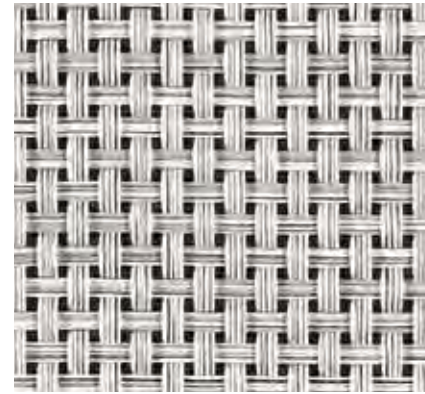
PLYNYL® W2W FLOORING



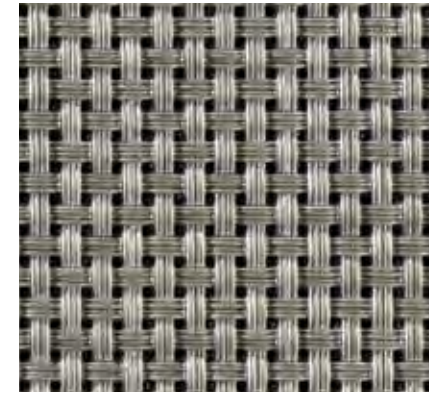
CUSTOM FLOOR MATS

Basketweave™

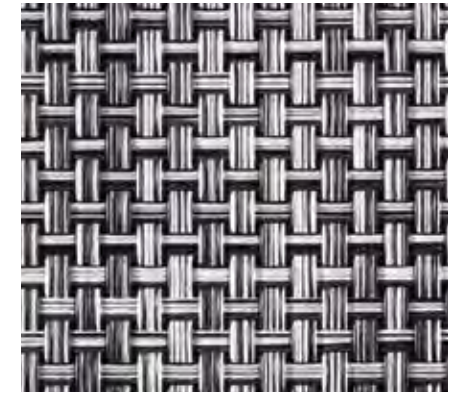
One of the oldest and simplest of weaving constructions, our four over four Basketweave has become our most important vehicle for expressing our unique color point of view. From deep earth tones to shades of metal to our own personal interpretation of brights, our signature Basketweave continues to be the foundation for our expanding collection of textures.



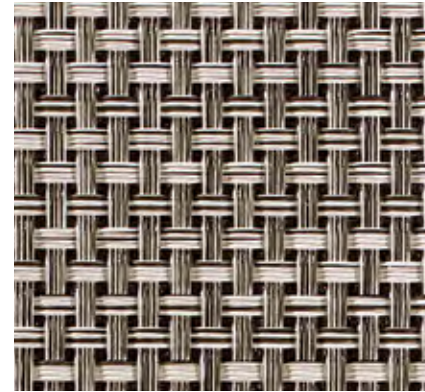
Marble



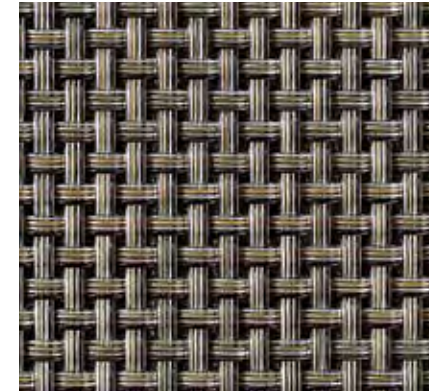
Glacier



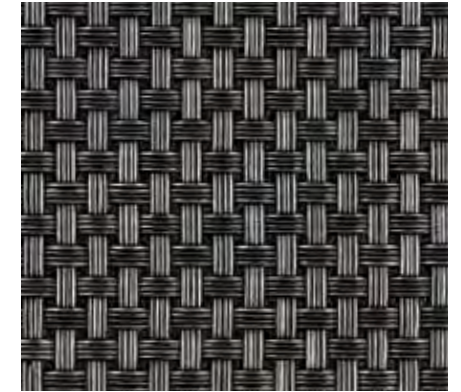
White & Black



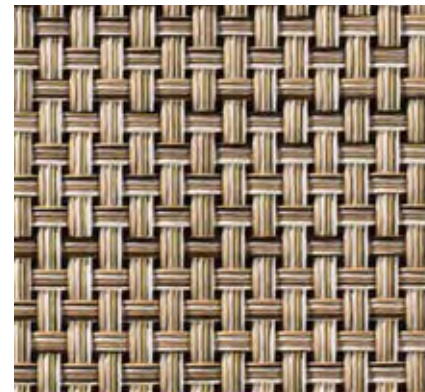
Oyster



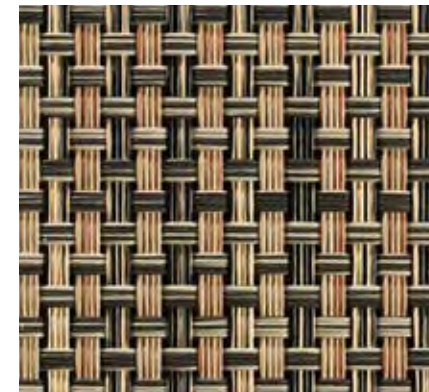
Platinum



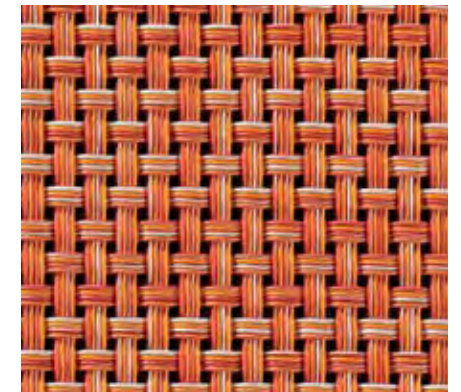
Titanium



Latte



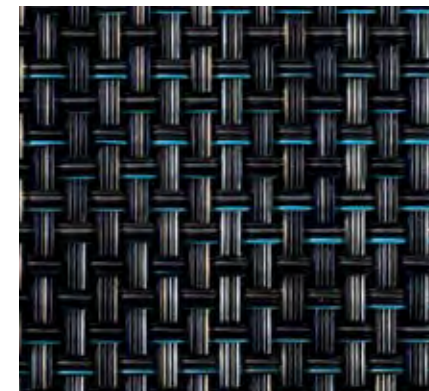
Bark



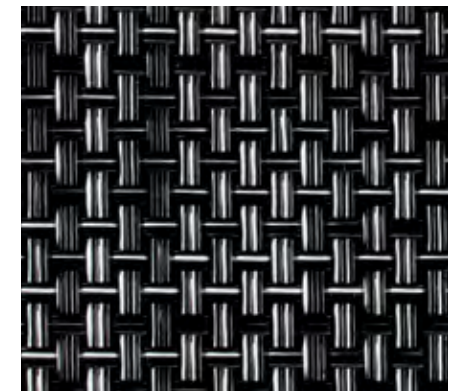
Mango



Sienna



Mineral Blue



Black & White



TerraStrand®





PLYNYL® SQUARE TILE FLOORING



PLYNYL® PLANK TILE FLOORING

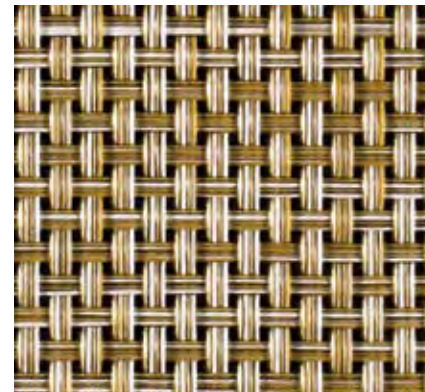


PLYNYL® W2W FLOORING

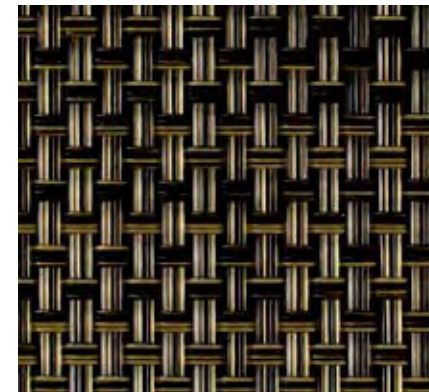


CUSTOM FLOOR MATS

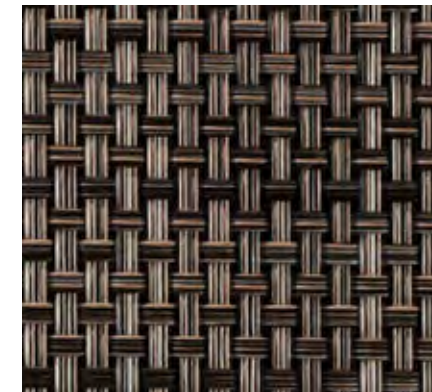
Basketweave™



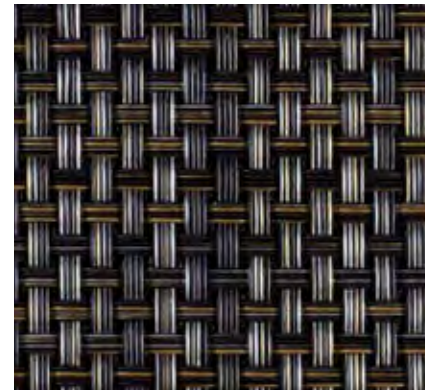
Harvest



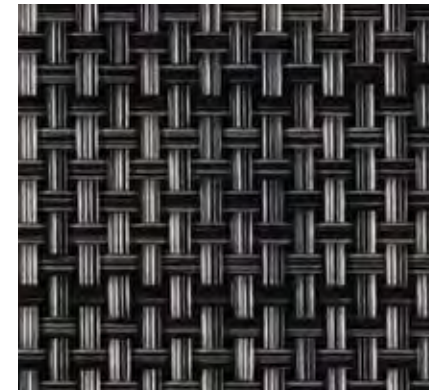
Black/Gold



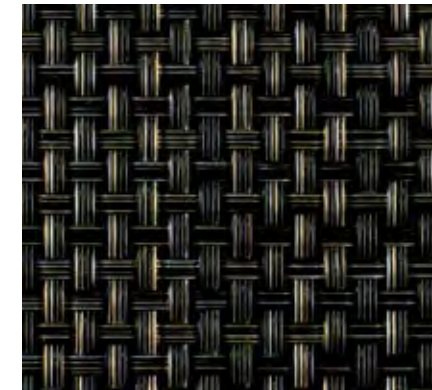
Earth



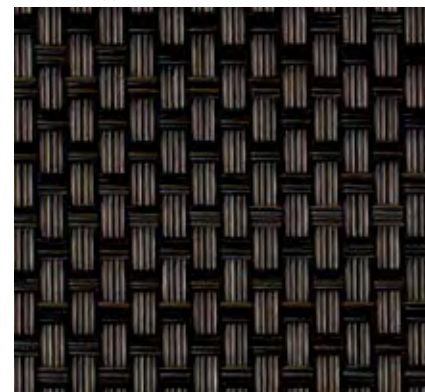
Brushed Copper



Carbon



Galvanized Steel



Chestnut



TerraStrand®



antimicrobial product protection





PLYNYL® SQUARE TILE FLOORING



PLYNYL® PLANK TILE FLOORING



PLYNYL® W2W FLOORING



CUSTOM FLOOR MATS

Bouclé™

Among all of our weaves, Bouclé most resembles a tweed texture one might find in a closet among sweaters, scarves or jackets. The colors for Bouclé are thoughtfully chosen to accentuate its intricate construction and provide a dimensional, rich, tactile texture.



Moon



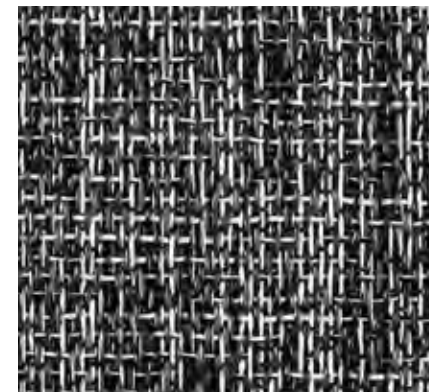
Salt



Grey



White + Black



Black + White



Coffee



Ink



TerraStrand®





PLYNYL® SQUARE TILE FLOORING



PLYNYL® PLANK TILE FLOORING



PLYNYL® W2W FLOORING

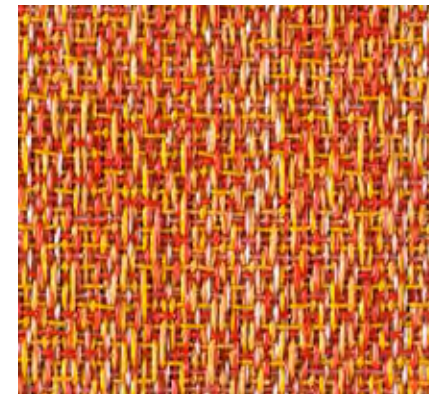


CUSTOM FLOOR MATS

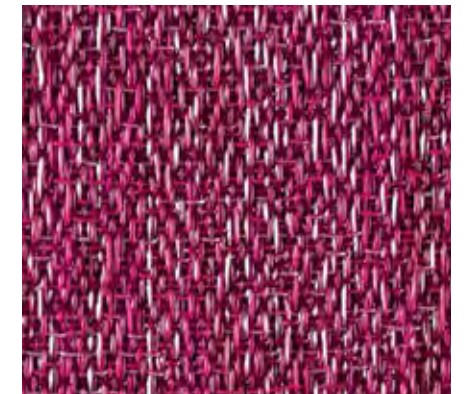
Bouclé™



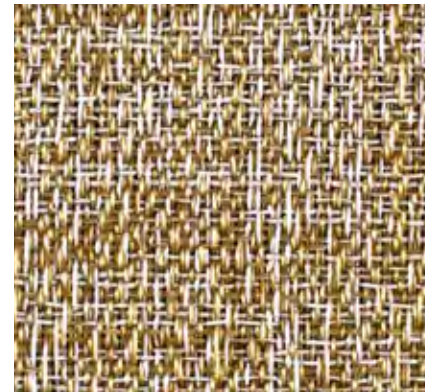
Citron



Orange



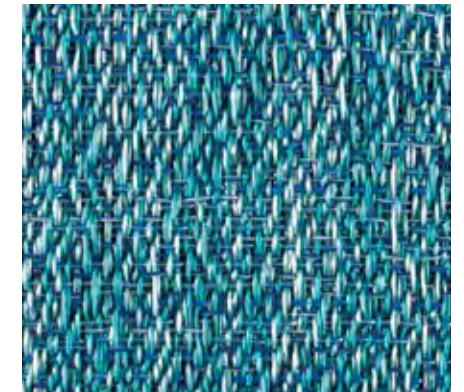
Pink



Cornsilk



Mélange



Turquoise

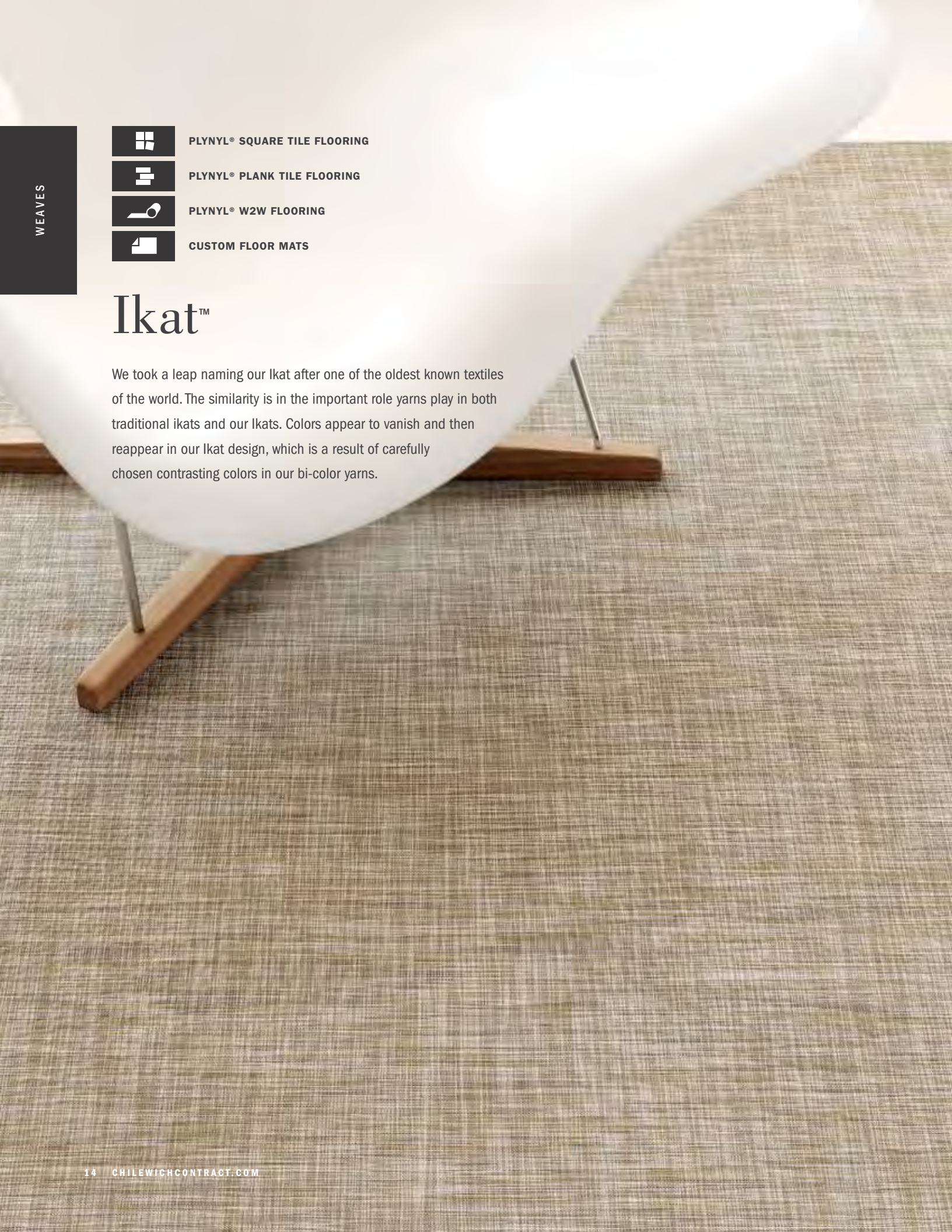


Gilt



Pebble

**TerraStrand®**



PLYNYL® SQUARE TILE FLOORING



PLYNYL® PLANK TILE FLOORING



PLYNYL® W2W FLOORING



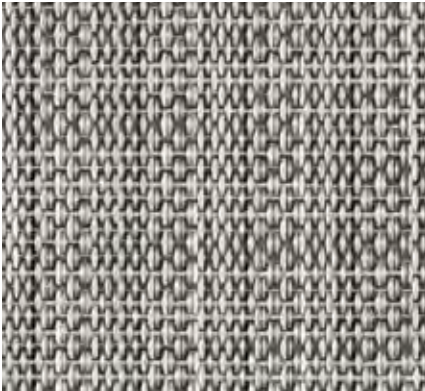
CUSTOM FLOOR MATS

Ikat™

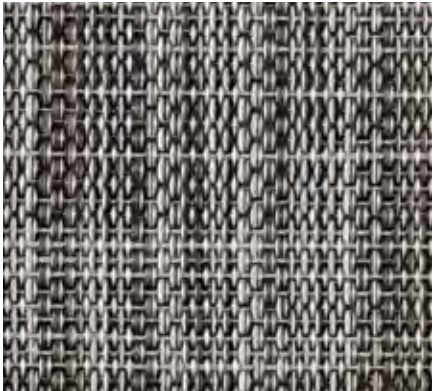
We took a leap naming our Ikat after one of the oldest known textiles of the world. The similarity is in the important role yarns play in both traditional ikats and our Ikats. Colors appear to vanish and then reappear in our Ikat design, which is a result of carefully chosen contrasting colors in our bi-color yarns.



Bone



White/Silver



Tweed



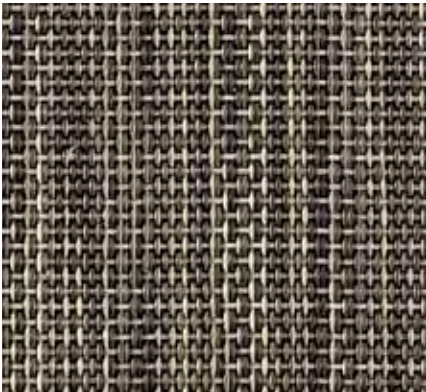
White/Gold



Walnut



Fawn



Stone



Slate



Dark Brown



Deep Grey



TerraStrand®



Microban®
antimicrobial product protection





PLYNYL® SQUARE TILE FLOORING



PLYNYL® PLANK TILE FLOORING



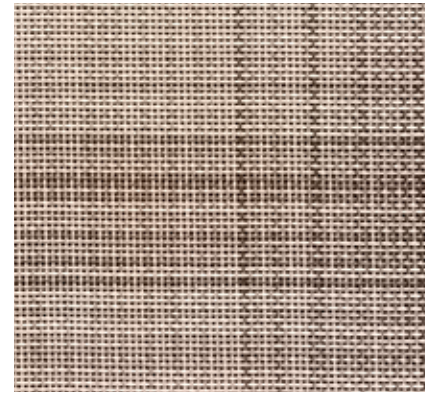
PLYNYL® W2W FLOORING



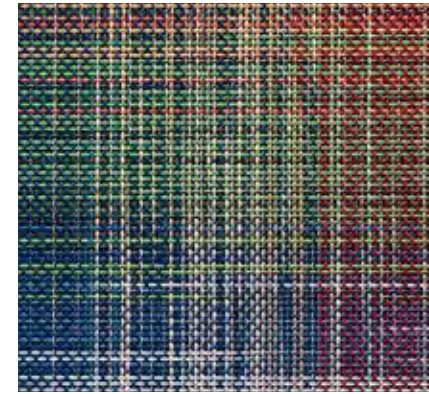
CUSTOM FLOOR MATS

Plaid™

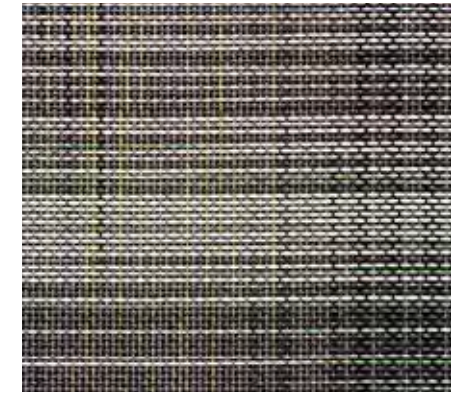
A unique feature of this bold pattern is that aligning the seams is not necessary. The Plaid collection uses a rotation of fourteen different colors in solid and bi-color yarns, so combining it with different materials and finishes such as wood, metal and ceramic is seamless and simple. The weave boasts versatility as it works in any space from a convention hall to a conference room to providing a homey accent in a hospital waiting area and so much in between.



Tan



Multi



Grey



TerraStrand®





PLYNYL® SQUARE TILE FLOORING



PLYNYL® PLANK TILE FLOORING



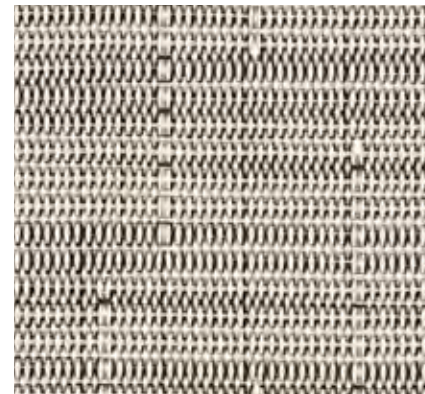
PLYNYL® W2W FLOORING



CUSTOM FLOOR MATS

Reed™

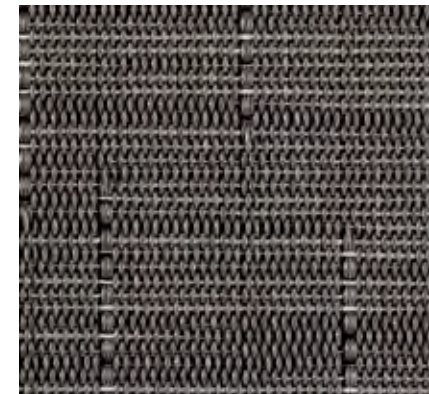
As a reinterpretation of our original Bamboo weave, Reed offers increased durability across all applications. This hardworking weave has a natural feel that will complement and enhance a wide range of interiors, from traditional to contemporary settings.



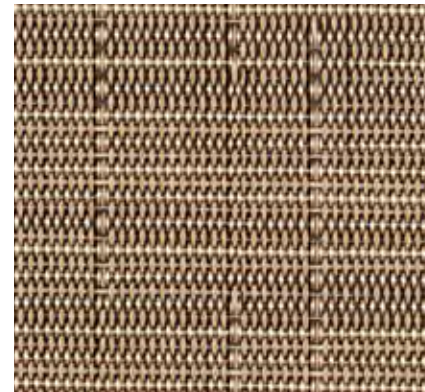
Seashell



Bisque



Ash



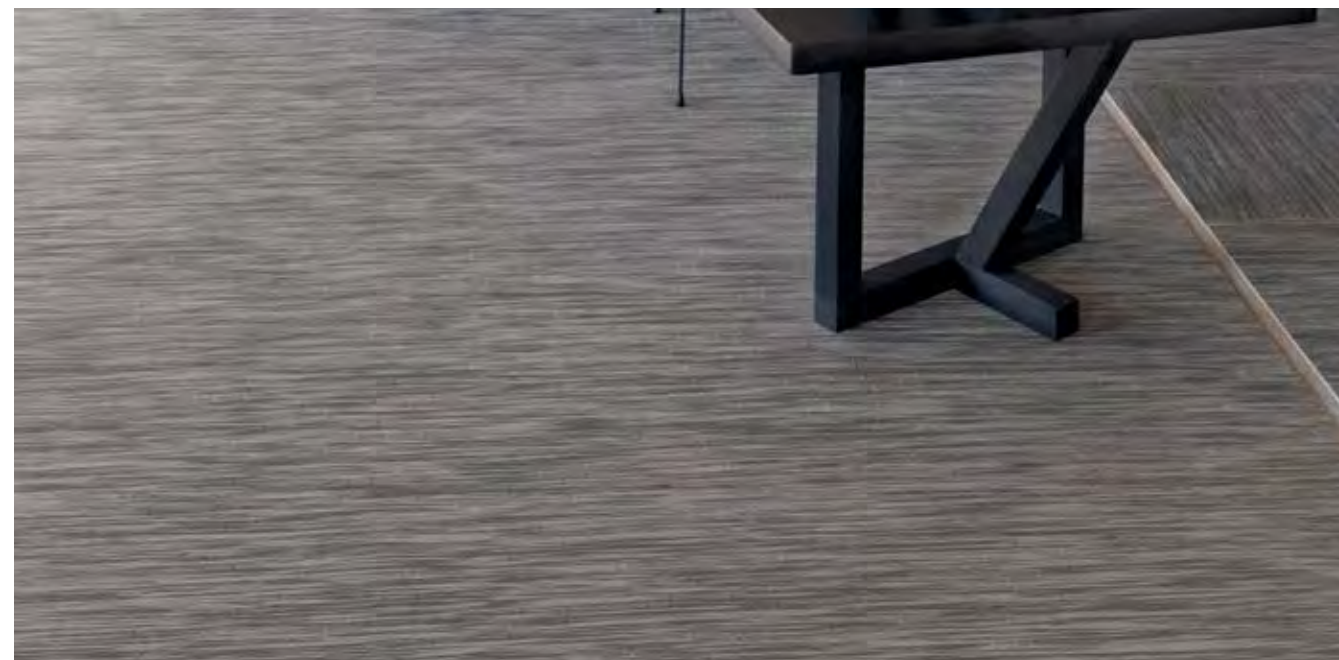
Sandbar



Cinnamon



Clove



TerraStrand®

Microban®
antimicrobial product protection



PLYNYL® SQUARE TILE FLOORING



PLYNYL® PLANK TILE FLOORING



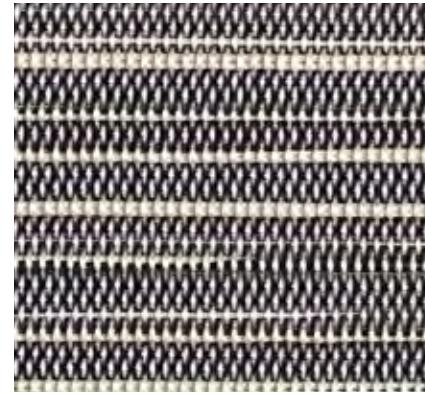
PLYNYL® W2W FLOORING



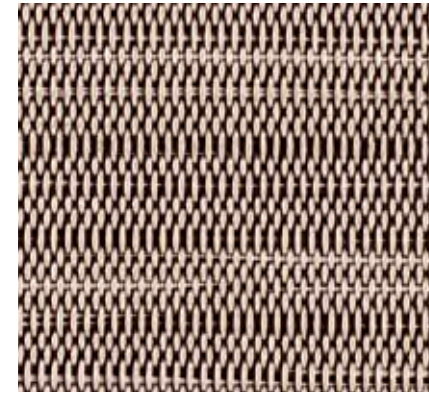
CUSTOM FLOOR MATS

Rib Weave™

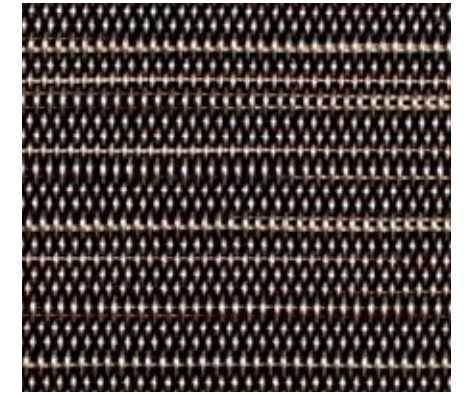
Rib Weave is a chunky, textural weave of flat, dry colors that has a surprisingly natural feel for a synthetic material.



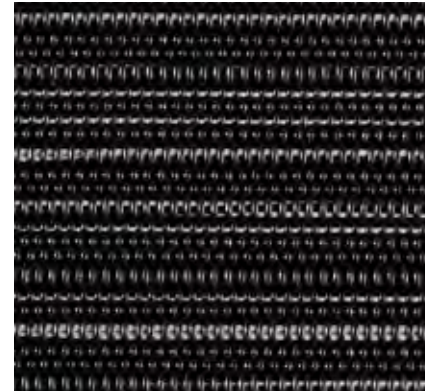
Pearl



Coconut



Lead



Black



TerraStrand®



antimicrobial product protection





PLYNYL® SQUARE TILE FLOORING



PLYNYL® PLANK TILE FLOORING



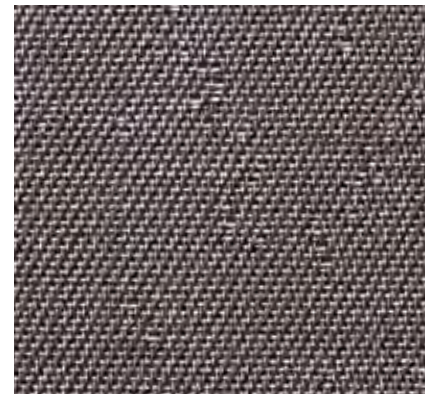
PLYNYL® W2W FLOORING



CUSTOM FLOOR MATS

Speckle™

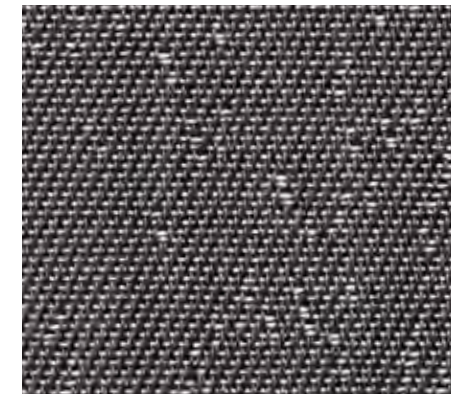
At first glance, Speckle almost appears as if it's a solid color, when in fact it features a delicate yet minimal pattern. The warp yarn subtly contrasts with the soft pearlescent silver speckles in the weft direction. The overall design appears discreet in a large expanse but intricate at a closer glance. The natural color shift between warp and weft adds a richness and level of interest to this quiet weave. Speckle is ideal for spaces in which the floor is a foundation for bolder interior design elements.



Taupe



Blue



Mercury



Onyx



TerraStrand®

Microban®
antimicrobial product protection



PLYNYL® SQUARE TILE FLOORING



PLYNYL® PLANK TILE FLOORING



PLYNYL® W2W FLOORING



CUSTOM FLOOR MATS

Stripe™

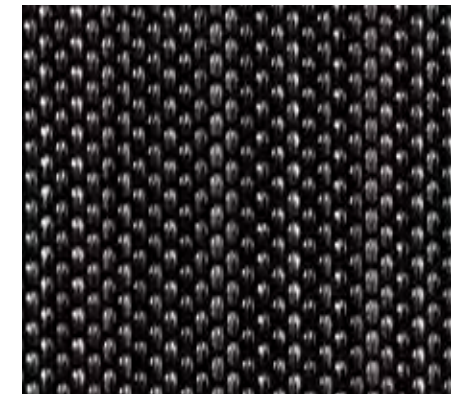
A carefully planned sequence of colors appears to look like a random stripe. However, the rotation is very deliberate and the overall effect, while appearing tonal, is in fact created with nine individual colors.



Earth



Gemstone



Silver Grey

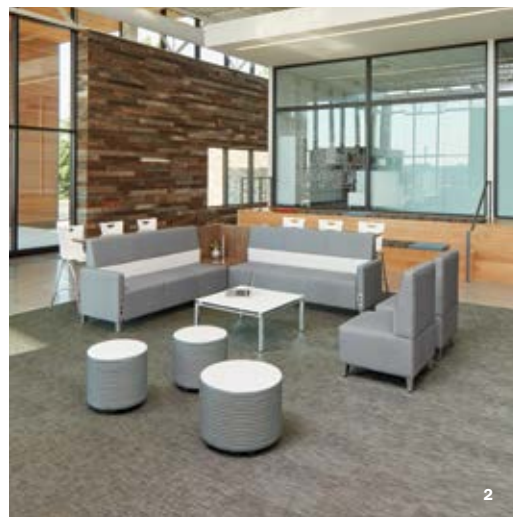


TerraStrand®

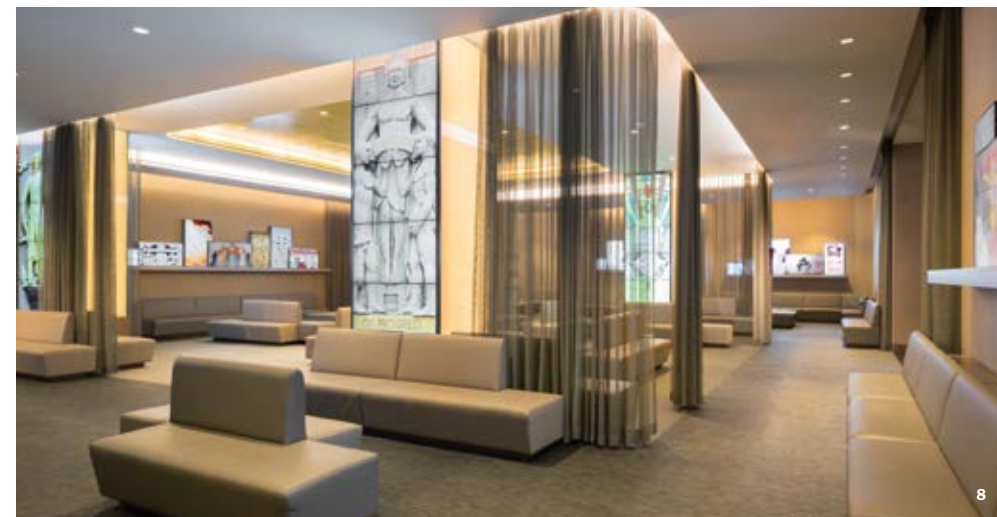
Microban®
antimicrobial product protection



1



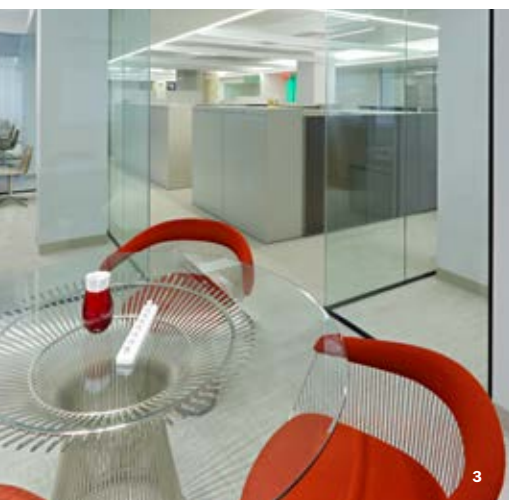
2



8



9



3



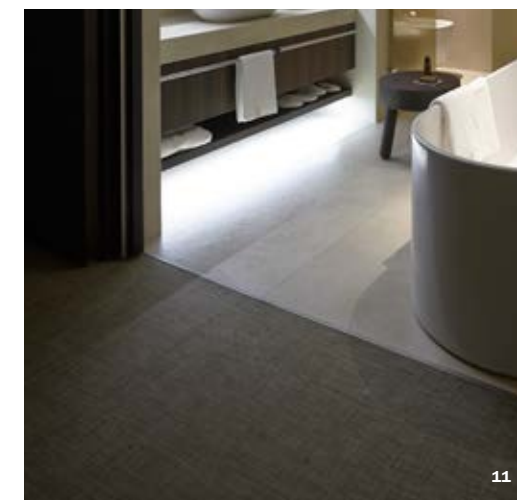
4



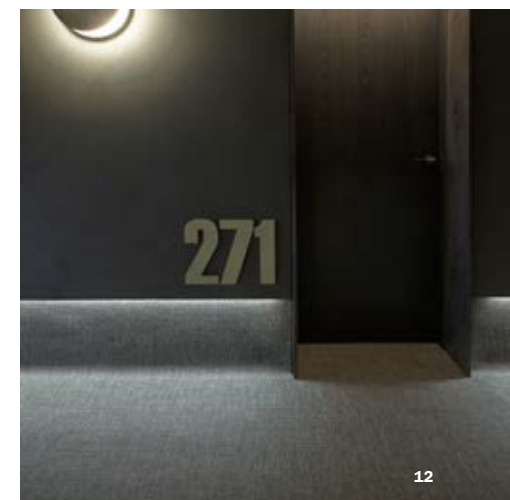
5



10



11



12



6



7



13



14

1/2. National Office Furniture, Jasper, IN, USA. Design: Gensler Dallas. 3/4. Office Building, New York, NY, USA. Photo: Tom Sibley.
5. Axxess, Dallas, TX, USA. Design: PDL Designs Ltd. 6/7. Sparkasse Schermbeck/Germany, Dusseldorf, Germany
Photo: Jens Kirchner. Design: UKW Innenarchitekten, Krefeld, Germany.

8/9. NBC Lobby & Guest Experience, New York, NY, USA. Photo: Paul Warchol Photography. Design: Gabellini Sheppard Associates.
10/11/12. Hotel Duca, Milan, Italy. Design: Aldo Rossi. 13/14. Citigate First Financial, Amsterdam, Netherlands. Photo: Stijn Poelstra Design: Void Architecture.

VISIT CHILEWICHCONTRACT.COM/PORTFOLIO FOR ADDITIONAL CASE STUDIES.