



AMTICO  
DESIGN TILE



ACCESS





Amtico Access is a stylish, loose lay vinyl flooring collection.

Incredibly well suited to retail, office and hospitality environments where rapid installation is required, Amtico Access can be combined or used individually to create contemporary floor designs.

An intelligently balanced mix of 43 elegant and modern wood, stone and abstract designs, Amtico Access is a collection that brings beautiful, versatile aesthetics to practical flooring that performs.

Amtico Access can be installed efficiently without permanent adhesives and specified as part of integrated schemes for demanding commercial projects. Delivering excellent acoustic benefits, the collection features 5.0 mm gauge planks and tiles with an ultra-strong 0.55 mm wear layer in a usable spectrum of light reflectance values. Amtico Access can be laid on subfloors, including raised access installations, and is easily maintained.

Built to cope with busy commercial environments, a 10 year warranty demonstrates our confidence in your choice of flooring.

## C O N T E N T S

04 COMMERCIAL APPLICATIONS

08 WOOD

14 STONE

17 ABSTRACT

21 PRODUCT SWATCHES

26 PRODUCT AVAILABILITY

28 TECHNICAL INFORMATION

30 AMTICO ENTRYWAY

32 CONTACT AMTICO





PRODUCT USED: SUN BLEACHED OAK

## MEDIA BRANDS

Location: London, UK

Products: SX5W2531 Sun Bleached Oak

Media Brands is a global company that provides innovative media solutions for its clients. The agency based in London underwent a complete re-fit across all of its floors. The project specifically required a vinyl flooring product which was on trend and that had a creative and unique offering.

In a busy office wires and cabling need to be reached. Amtico Access was chosen for this reason as tiles are secured with a tackifier, which means that they are loose laid to offer accessibility once fitted.

Designer Hila Yonas explained:

*"Being a creative agency we wanted a product that could offer more than the norm. We already knew of Amtico's great reputation but we were completely sold on the products once we saw the innovative designs at the Clerkenwell design show."*

## NORTH HERTFORDSHIRE COLLEGE

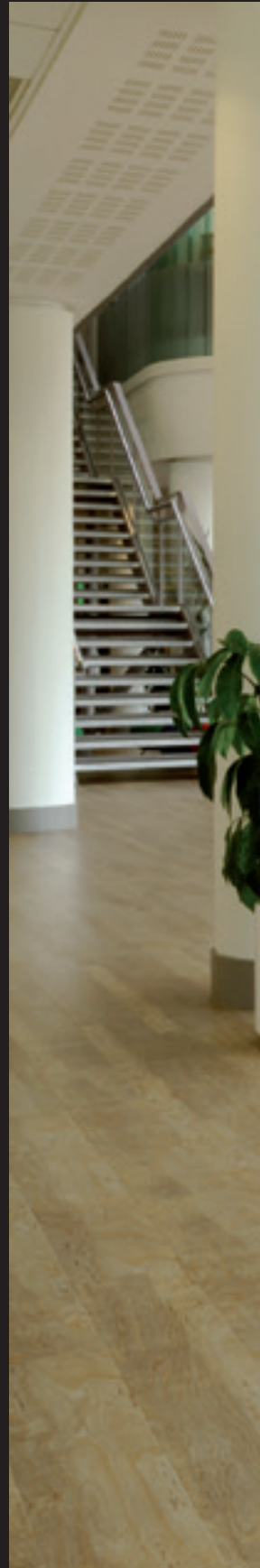
Location: North Hertfordshire, UK  
Products: SX5W2516 Bleached Elm

A further education college turned to Amtico International when replacing its worn out carpet, opting for a more durable alternative. North Hertfordshire College's 700 sq metre upgrade saw the installation of the Amtico Access range throughout the atrium of its Stevenage site. The area comprises a 100 seater canteen, recreation area and learning resource centre.

The college's suspended flooring required a range that could not only withstand the high footfall of students and would be simple to maintain, but one that would also be flexible enough to easily gain access to the underfloor utilities.

Head of Estates at North Hertfordshire College Brian Sapsed believes the contemporary finish enhances the professional image of the college. He said:

*"We are very pleased with the wood effect flooring. The Bleached Elm creates a modern, airy look that is more conducive to learning. Contractors Contract Design Flooring (CDF) specified and fitted the Amtico Access flooring. Having worked with CDF on previous projects we have installed Amtico in various areas in our other four sites and have always found it to be very durable and retain its appearance. The Amtico Access range has enabled us to replicate these benefits and also reduce our maintenance cost."*







PRODUCT USED: BLEACHED ELM

WOOD

## SHADOW OAK

Dark and brooding, this is a design with impact. A stylish twist on a standard wood grain, Shadow Oak brings sophistication and mood to a space.









## SIMPLE BEECH

A smooth, contemporary wood,  
Simple Beech is the perfect choice  
for creating open, light spaces,  
small or large.



# SUN BLEACHED OAK

Rustic, contemporary and supremely stylish, the distressed, natural grey of Sun Bleached Oak can transform any space.





## DUSKY WALNUT

Featuring a sweeping grey linear grain, Dusky Walnut can transform any space into something beautiful and elegant.





# EXOTIC WALNUT + RIVERSTONE TUNDRA

Rich, warm Exotic Walnut planks add depth and character to a quirky workspace. Balanced by a field of Riverstone Tundra soft, neutral tiles, Amtico Access adds impact through simple floor design to offices and commercial spaces alike.

STONE

## CERAMIC NEUTRAL

Ceramic Neutral combines soft natural tones with a subtle ceramic feel to create a calm backdrop for any contemporary space.







# VERTEX CLOUD

Diffused, multi-directional lines give this standout product its cool looks. Blending pale greys and soft neutrals makes this an incredibly versatile product.





# MIRUS HENNA

ABSTRACT

Sweeping vertical colour gradients - an aubergine base with browns, pale greys and hints of lilac, creates a contemporary abstract aesthetic. Workable individually or use in combination for dramatic effect.







## URBAN LINE STONE

Stylised linear design in a palette of light grey hues, with a fine textile texture.

# EQUATOR WAVE + ORGANZA WEAVE

Evoke a luxurious mood with painterly abstract designs from Amtico Access. Intersecting stepped zones, in two of Amtico's most unique designs, make a beautiful statement in a retail space. Equator Wave and Organza Weave are versatile, visually sophisticated and robust – loose lay flooring at its best.





## CIRRUS AIR + SATIN WEAVE

Cirrus Air and Satin Weave create a beautiful contrast across a working space. By randomly joining planks and tiles, in a contemporary monochrome look, Amtico Access delivers a new look in loose lay floor design.

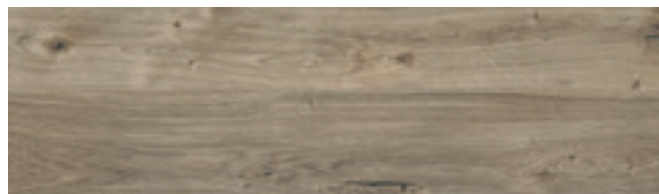


# WOOD



Simple Beech

SX5W5023



Sun Bleached Oak

SX5W2531



Pale Ash

SX5W2518



Bleached Elm

SX5W2516



Honey Oak

SX5W2504



Traditional Oak

SX5W2514



Ashdown Plum

SX5W8000



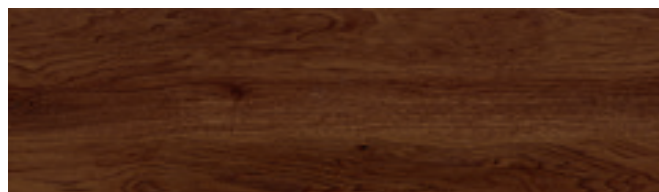
Warm Cherry

SX5W2506



Exotic Walnut

SX5W2541



Black Walnut

SX5W2534

# WOOD



Cirrus Air

SX5W8100



Frosted Oak

SX5W5020



Shibori Jasmine

SX5W7800



Cavalier Oak

SX5W5024



Dusky Walnut

SX5W2542



Winter Oak

SX5W5021



Shibori Sencha

SX5W7780



Shadow Oak

SX5W5022

For product size availability please refer to pages 26-27

# STONE & ABSTRACT



Mirabelle Creme SX5SMB14



Linen Weave SX5A3800



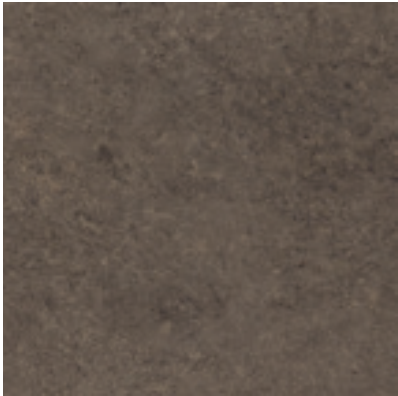
Ceramic Ecru SX5S3592



Ceramic Neutral SX5S4303



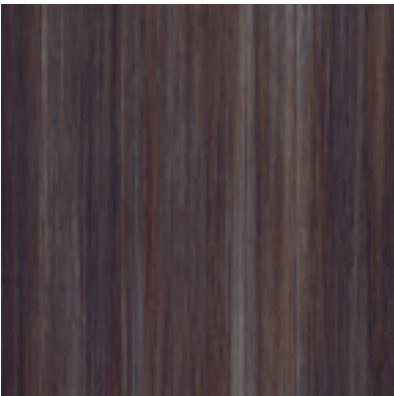
Riverstone Tundra SX5SRS40



Dry Stone Clay SX5S4435



Silk Weave SX5A2801



Mirus Henna SX5A6150



Ceramic Flint SX5S2594

For product size availability please refer to pages 26-27



# STONE & ABSTRACT



Vertex Cloud SX5A5608



Ceramic Light SX5S1565



Linear Stone Shale SX5S3606



Metropolis Grey SX5A5607



Ceramic Dark SX5S3566



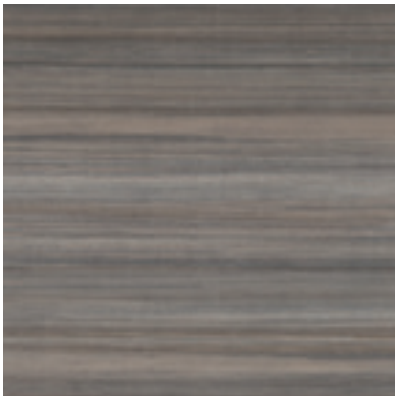
Vertex Smoke SX5A5601



Flux Gris SX5A5604



Urban Line Felt SX5A3271



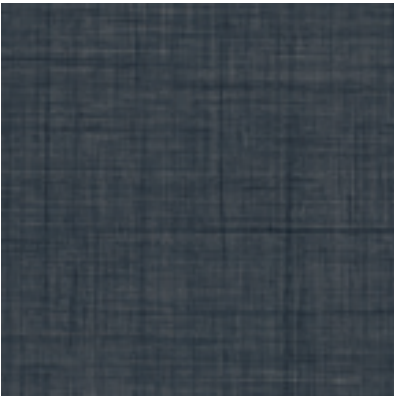
Equator Wave SX5AEQ39

For product size availability please refer to pages 26-27

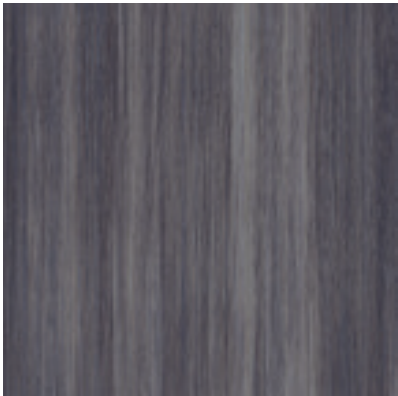
# STONE & ABSTRACT



Satin Weave SX5A3805



Organza Weave SX5A3806



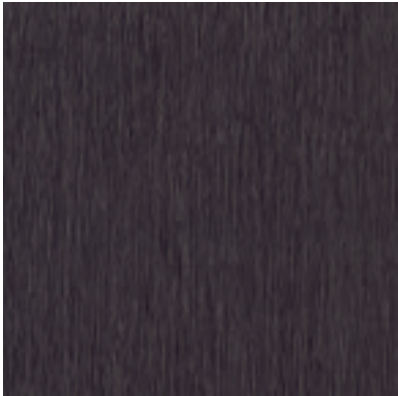
Mirus Indigo SX5A6140



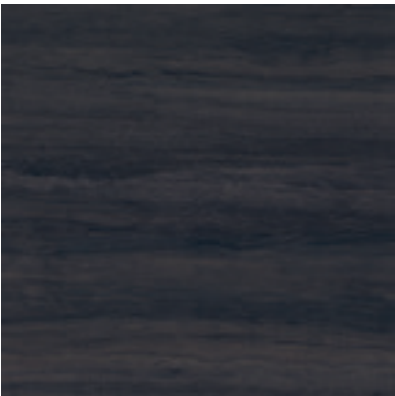
Velvet Weave SX5A2101



Urban Line Stone SX5A3170



Urban Line Lead SX5A5600



Linear Stone Black SX5S2405

For product size availability please refer to pages 26-27

# PRODUCT AVAILABILITY | WOOD

Product Code	Product Name	Category	Surface Finish	Plank & Tile sizes (straight grain)		LRV Value
				150.0 x 1000.0 mm (5.9" x 39")	450.0 x 450.0 mm (17.7" x 17.7")	LRV - Y Value
SX5W2504	Honey Oak	Wood	Tick	•		32
SX5W2506	Warm Cherry	Wood	Tick	•		17
SX5W2514	Traditional Oak	Wood	Tick	•		23
SX5W2516	Bleached Elm	Wood	Tick	•		32
SX5W2518	Pale Ash	Wood	Tick	•		37
SX5W2531	Sun Bleached Oak	Wood	Tick	•		32
SX5W2534	Black Walnut	Wood	Tick	•		9
SX5W2541	Exotic Walnut	Wood	Tick	•		12
SX5W2542	Dusky Walnut	Wood	Tick	•		17
SX5W5020	Frosted Oak	Wood	Rustic	•		37
SX5W5021	Winter Oak	Wood	Rustic	•		16
SX5W5022	Shadow Oak	Wood	Rustic	•		8
SX5W5023	Simple Beech	Wood	Tick	•		49
SX5W5024	Cavalier Oak	Wood	Tick	•		23
SX5W7780	Shibori Sencha	Wood	Tick	•		14
SX5W7800	Shibori Jasmine	Wood	Tick	•		33
SX5W8000	Ashdown Plum	Wood	Tick	•		15
SX5W8100	Cirrus Air	Wood	Tick	•		54

All Amtico Access Wood products are 1.8m<sup>2</sup> to a box.

# PRODUCT AVAILABILITY | STONE

Product Code	Product Name	Category	Surface Finish	Plank & Tile sizes (straight grain)		LRV Value
				150.0 x 1000.0 mm (5.9" x 39")	450.0 x 450.0 mm (17.7" x 17.7")	LRV - Y Value
SX5S1565	Ceramic Light	Stone	Ceramic		•	53
SX5S2405	Linear Stone Black	Stone	Ceramic		•	8
SX5S2594	Ceramic Flint	Stone	Ceramic		•	14
SX5S3566	Ceramic Dark	Stone	Ceramic		•	27
SX5S3592	Ceramic Ecrú	Stone	Ceramic		•	41
SX5S3606	Linear Stone Shale	Stone	Ceramic		•	36
SX5S4303	Ceramic Neutral	Stone	Ceramic		•	38
SX5S4435	Dry Stone Clay	Stone	Ceramic		•	14
SX5SMB14	Mirabelle Creme	Stone	Ceramic		•	52
SX5SRS40	Riverstone Tundra	Stone	Ceramic		•	38

All Amtico Access Stone products are 2.025 m<sup>2</sup> to a box.



# PRODUCT AVAILABILITY | ABSTRACT

Product Code	Product Name	Category	Surface Finish	Plank & Tile sizes (straight grain)		LRV Value
				1500 x 1000.0 mm (5.9' x 39")	450.0 x 450.0 mm (17.7" x 17.7")	LRV - Y Value
SX5A2101	Velvet Weave	Abstract	Ceramic		•	10
SX5A2801	Silk Weave	Abstract	Ceramic		•	14
SX5A3170	Urban Line Stone	Abstract	Ceramic		•	27
SX5A3271	Urban Line Felt	Abstract	Ceramic		•	17
SX5A3800	Linen Weave	Abstract	Ceramic		•	35
SX5A3805	Satin Weave	Abstract	Ceramic		•	18
SX5A3806	Organza Weave	Abstract	Ceramic		•	18
SX5A5600	Urban Line Lead	Abstract	Ceramic		•	9
SX5A5601	Vertex Smoke	Abstract	Ceramic		•	24
SX5A5604	Flux Gris	Abstract	Ceramic		•	22
SX5A5607	Metropolis Grey	Abstract	Ceramic		•	27
SX5A5608	Vertex Cloud	Abstract	Ceramic		•	46
SX5A6140	Mirus Indigo	Abstract	Ceramic		•	12
SX5A6150	Mirus Henna	Abstract	Ceramic		•	10
SX5AEQ39	Equator Wave	Abstract	Ceramic		•	19

All Amtico Access Abstract products are 2.025 m² to a box.

# TECHNICAL SPECIFICATION

The floor covering selected belongs to the Amtico Design Tile family of luxury vinyl tiles (LVT), manufactured from several layers that have been laminated together, and commonly incorporating a printed film design layer. Products are supplied with bevelled edges. Tiles should be installed using Amtico adhesives.

Name	Standard	Symbol	Result
CE / DOP	EN 14041		CPR/A1/003
Usage Classification	EN 685 EN ISO 10874		23,33,42
Manufacturing Standard	EN 649 EN ISO 10582		Pass
Total Thickness	EN 428 EN ISO 24346		5.0 mm
Wear Layer Thickness	EN 429 EN ISO 24340		0.55 mm
Weight	EN 430 EN ISO 23997		7,800 g/m²
Abrasion Resistance	EN 649 EN ISO 10582		Group T Type 1
Residual Indentation	EN 433 EN ISO 24343-1		≤0.1 mm
Dimensional Stability	EN 434 EN ISO 23999		≤0.25 %
Curling	EN 434 EN ISO 23999		≤2 mm
Flexibility	EN 435 EN ISO 24344 method A		Pass
Slip Resistance	DIN 51130 EN 13893		R9 Class DS
Chemical Resistance	EN 423 EN ISO 26987		Excellent
Light Stability	ISO 105-B02		6 or better
Flammability / Smoke Emissions	EN 13501-1		B <sub>f</sub> -s1
Castor Chair Resistance	EN 425		Pass
Sound Reduction	ISO 140-8		9 dB
Electrostatic Performance	ISO 6356 EN 1815		≤2 kV
Emissions			Z-156.603-867
Emission COV			A+
Surface Treatment			Urethane
Environmental	BRE Green Guide		A/A+ Generic specification
Phthalate Free			



**BREEAM®**

Amtico Access products correspond to the BRE Global Green Guide online generic specification for printed laminate polyvinyl chloride floor coverings which achieves a summary rating of A+ when used in healthcare, retail and education, and an A in commercial and residential building types.

# AREAS OF USE

Amtico Access is an excellent product solution for Office, Retail and Hospitality & Leisure sectors. It is particularly suitable for use in temporary installations such as short-term retail leases or where tiles may need to be removed to allow access to floor panels.

Amtico Access is recommended for use over properly prepared concrete, suspended wood, raised access floors, metal and other suitable substrates.

This product should not be installed in unheated rooms or exterior locations.

# INSTALLATION

Installation must be carried out in accordance with the requirements of the relevant national standard and the Amtico products technical information – the latest information is available at [www.amtico.com](http://www.amtico.com). The surface must be flat, smooth, dry and fit for purpose. Levelling compounds should be used as recommended. Tiles and subfloor must be allowed to stabilize to a constant temperature between 18°C and 27°C for a period of 24 hours prior to, during and 24 hours after installation. Underfloor heating must be switched off for 48 hours before, during and 48 hours after installation. The tiles should be stored flat. Amtico International Tackifier is recommended for installing Amtico Access tiles. In areas subject to potentially large changes in temperature, for example floors exposed to direct sunlight, or areas with underfloor heating, it is recommended that Amtico International HT Adhesive or Universal 2-Part Adhesive is used to install tiles according to subfloor type.

Tessellation (quarter turn) is required for all Vertex designs.

# MAINTENANCE

Maintenance should be carried out in accordance with the recommendations of the Amtico products technical information – the latest information is available at [www.amtico.com](http://www.amtico.com). The urethane surface treatment facilitates the removal of scuff marks. Cleaning products and entrance matting designed for use with Amtico products are available from Amtico International. Maintenance should involve simple dust mopping, wet mopping, spray cleaning or scrubber-drying with a neutral detergent. The application of a floor dressing is not necessary, although this can be carried out to provide additional protection if desired.

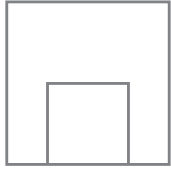
For the latest installation and maintenance information please visit [www.amtico.com](http://www.amtico.com)



Visit [amtico.com](http://amtico.com) for more information on our product range, inspiring ideas, maintenance and installation advice.

Every effort is made to achieve accurate reproduction of products in this brochure, however printing limitations can be misleading. Selection of products should be made from actual samples. Samples are small pieces cut from standard tiles. They give only a general indication of the design. Tone and shading can vary slightly from batch to batch and it is not possible to guarantee that the sample will exactly match the material supplied. The policy of the Company is one of continuous development and improvement and the right is reserved to add or delete from the range or change patterns without prior notification. All metric sizes are rounded. All products are manufactured in line with EN649/ISO10582.





## ENTRYWAY

Make the right first impression with Amtico Entryway matting.

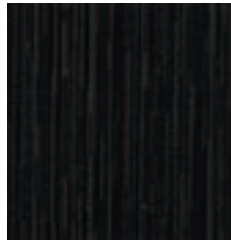
All of the designs in this collection – Ruffian, Recoarse and Take Back – feature type 6,6 nylon and scraper fibres. This unique combination works together to remove soil, moisture and debris at the door, preserving the look and appearance of flooring throughout your building. Choose from a range of colours, designs and textures which are practical yet stylish and perfect for protecting and complementing your Amtico flooring.



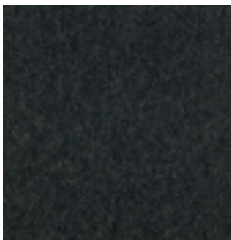
RUFFIAN  
Tan Tetons EERF008404



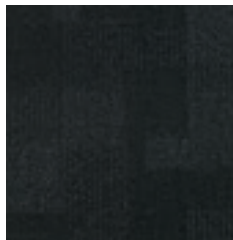
RECOARSE  
Traverse Tan EERC008413



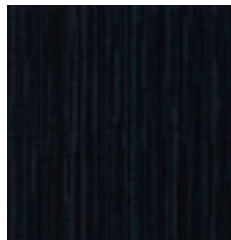
TAKE BACK  
Convert EETB001419



RUFFIAN  
Ebony Earth EERF001506



RECOARSE  
Bypass Black EERC001518



TAKE BACK  
Redeem EETB003520





PRODUCTS USED: BYPASS BLACK EERC001518 AND WINTER OAK SX5W5021



Amtico UK & European Sales  
Solar Park Southside  
Solihull, West Midlands  
B90 4SH  
+44 (0) 121 745 0800  
samples@amtico.com

Amtico Head Office  
Kingfield Road  
Coventry  
CV6 5AA  
+44 (0) 24 7686 1400

Amtico International SAS  
25 rue de Sèvres  
F-92100 Boulogne  
+33 (0) 1 55 38 95 70  
info@amtico.fr

Amtico International AB  
Strömögatan 7  
164 40 KISTA  
+46 (0) 8 584 233 24  
info@amtico.se

Amtico International GmbH  
Im Taubental 11  
D-41468 Neuss  
+49 (0) 2131 359 16 0  
info@amtico.de

Amtico International Asia,  
Unit 1907, 19th Floor, Paul Y. Centre,  
51 Hung To Road, Kwun Tong,  
Kowloon, Hong Kong  
+852 2327 7703

Amtico International MENSA & India,  
8th Floor, Building Number 2,  
J&G DMCC, Dubai, UAE  
+971 50 646 19 59