

ALMANAC

Design Spot by

ege[®]

THE URGE TO EXPLORE SPACE



The designer

Benjamin Webb. Born in 1985. Holds an Interior Design degree from Kingston University. Has worked as an interior designer in London since 2007. Currently heading up the Superfutures brand with architect Andy Martin, launching early 2014.

In 2013 was winner of a competition powered by ege carpets in association with FX Magazine. Now presented as the collection Almanac.

Living 50 miles from civilisation or working in the centre of a thriving capital city, we all share a connection with each other and the world around us.

Almanac celebrates the relationship between these two realities by forecasting man's struggle to understand mother nature and the modern world.

The collection sets out to express, inspire and push the boundaries between on-grid and off-grid through a range of multilayered designs and colourways.

Climb above tree tops and leafy terrain, wander through electric avenues and explore a birds-eye-view of our ever changing environment.

A duality of modern life and finding the balance.



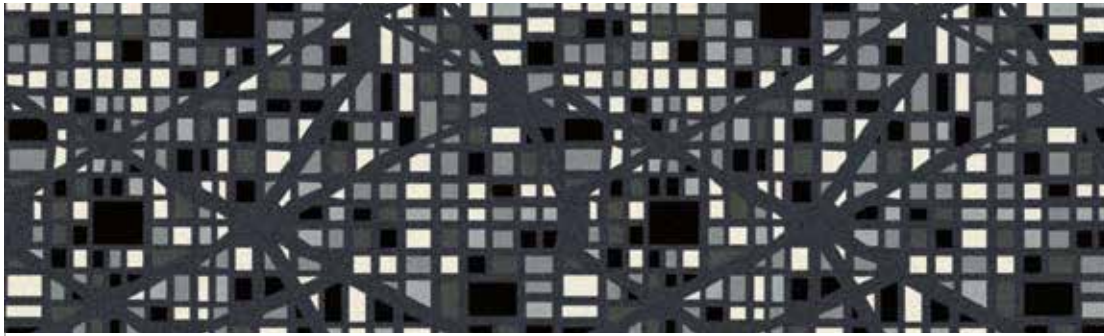
BYGN 764

BYGN 787





London



RF52202660 ON-GRID □
w: 195.6 cm x l: 185.4 cm

400 cm

5220



30 cm

40 cm



RF52202661 ON-GRID □
w: 195.6 cm x l: 185.4 cm

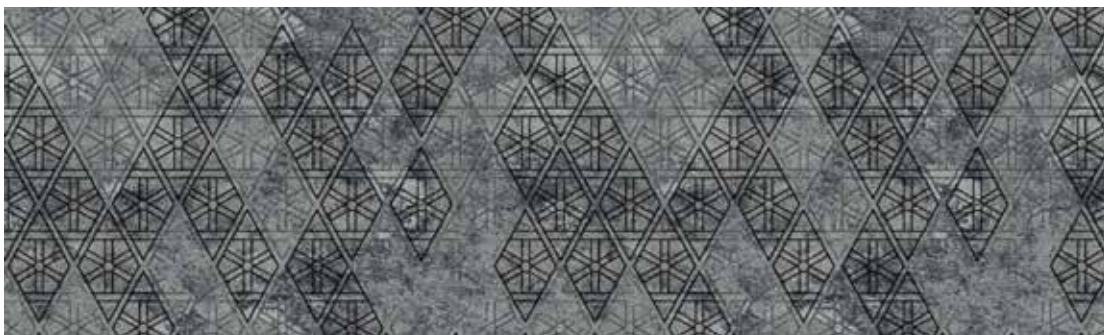
400 cm

5220



30 cm

40 cm



RF52202662 OFF-GRID □
w: 195.6 cm x l: 216.5 cm

400 cm

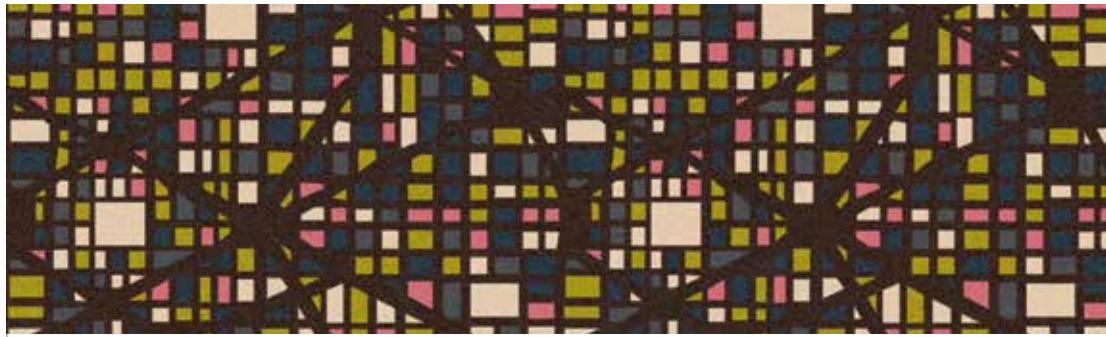
5220




30 cm

40 cm

Spring



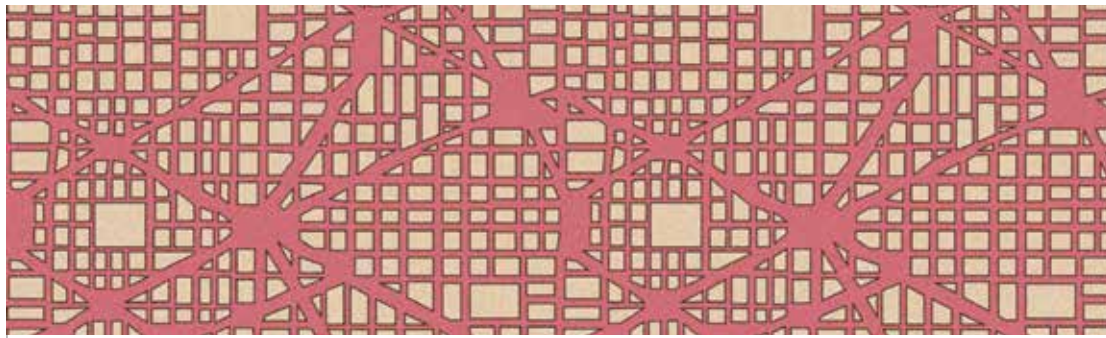
RF52752663 ON-GRID 
w: 195.6 cm x l: 185.4 cm

400 cm



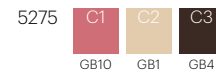
30 cm

40 cm



RF52752664 ON-GRID 
w: 195.6 cm x l: 185.4 cm


400 cm



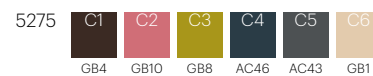
30 cm

40 cm



RF52752665 OFF-GRID 
w: 195.6 cm x l: 216.5 cm

400 cm

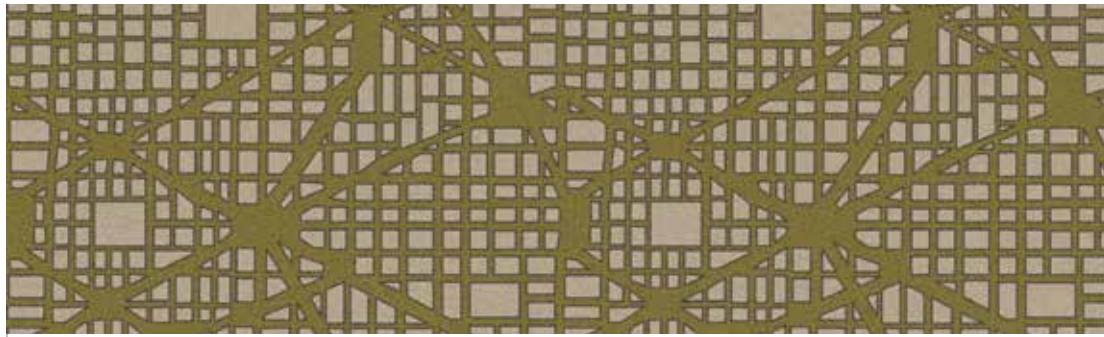


30 cm

40 cm



Summer



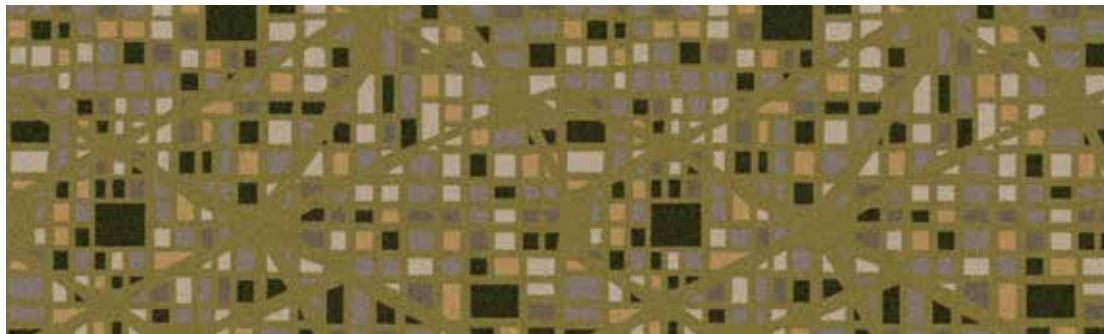
RF52952667 ON-GRID
w: 195.6 cm x l: 185.4 cm

400 cm



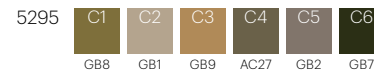
30 cm

40 cm



RF52952666 ON-GRID □
w: 195.6 cm x l: 185.4 cm

400 cm



30 cm

40 cm



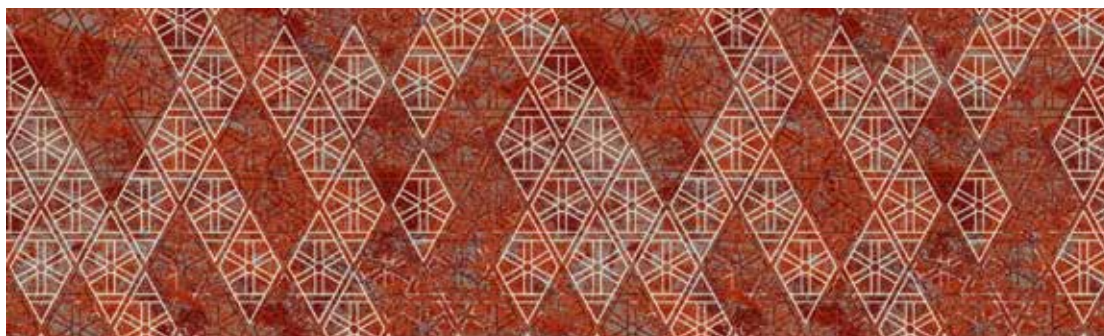
RF52952668 OFF-GRID □
w: 195.6 cm x l: 216.5 cm

400 cm



30 cm

40 cm



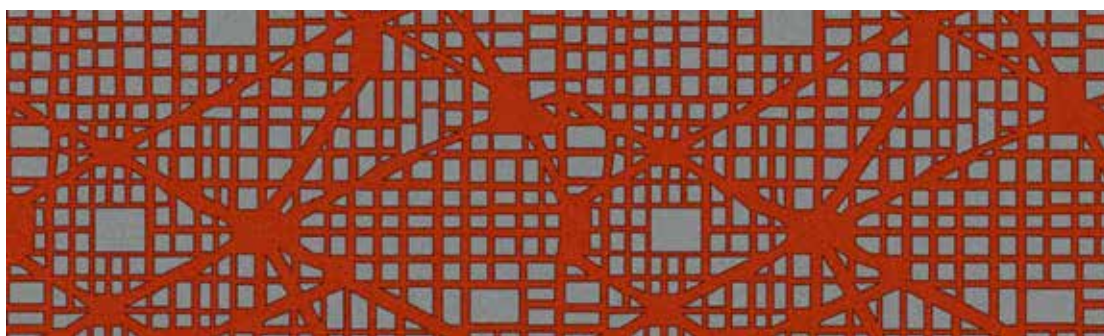
RF52202671 OFF-GRID □
w: 195.6 cm x l: 216.5 cm

400 cm



30 cm

40 cm



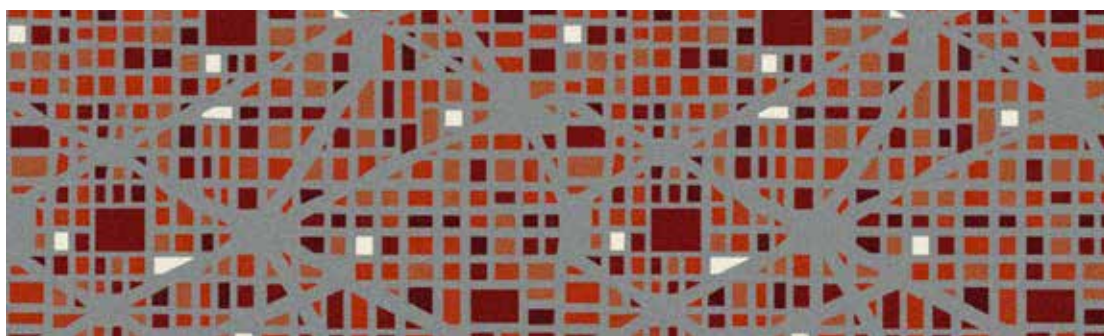
RF52202670 ON-GRID □
w: 195.6 cm x l: 185.4 cm

400 cm



30 cm

40 cm



RF52202669 ON-GRID □
w: 195.6 cm x l: 185.4 cm

400 cm



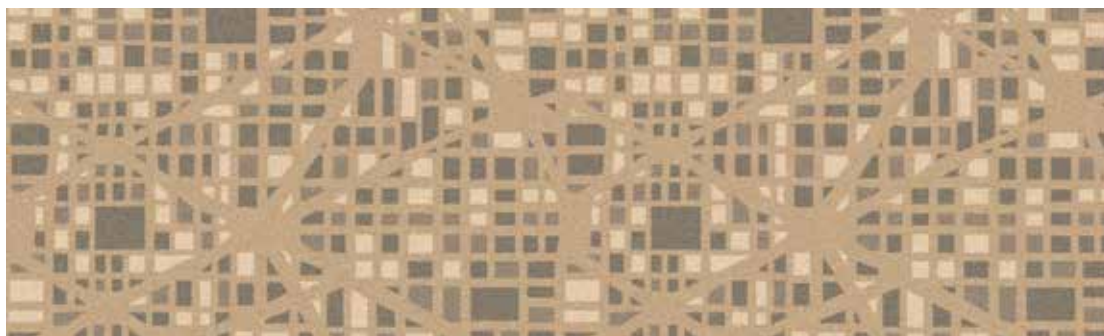
30 cm


40 cm





Winter



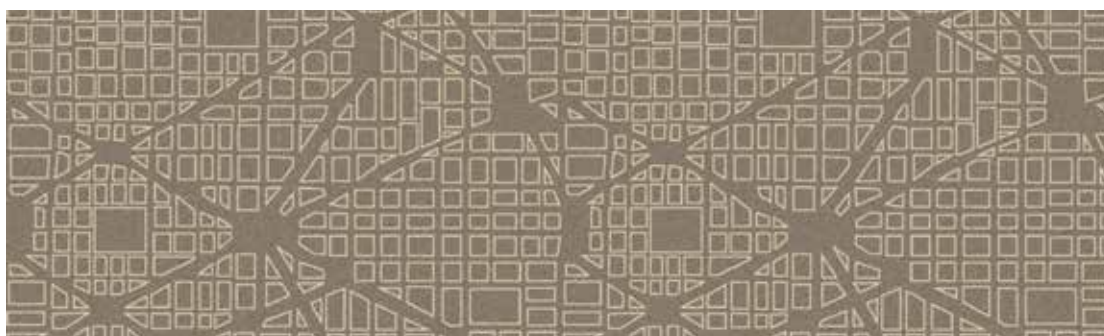
RF52752672 ON-GRID 
w: 195.6 cm x l: 185.4 cm


400 cm



30 cm

40 cm



RF52752673 ON-GRID 
w: 195.6 cm x l: 185.4 cm


400 cm



30 cm

40 cm



RF52752674 OFF-GRID 
w: 195.6 cm x l: 216.5 cm

400 cm



30 cm

40 cm

About Almanac

2 unique broadloom designs in contemporary colour shades.

All this with:

- Recolour options
- No minimum order requirements
- 8 standard qualities (see technical specifications p. 14-15)
- Undisputed performance standard EN 1307
- Performance classification to fit any need; heavy & extra heavy use
- 24-hour sample service
- Dispatch within 2 weeks from receipt of order

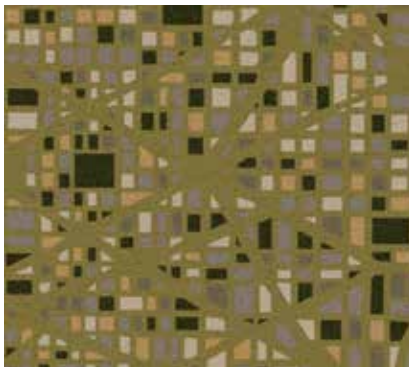
The collection is developed in ege's standard colour palettes making recolouration possible for all designs. The Almanac collection contains some standard patterns in which blend colours are used. Solid and blend colours are shown in colour codes beneath each pattern.

☐

Only patterns using solely solid colours (GB1-12) are available in the qualities Highline 630 and Highline Loop E16. Colour codes GB1-12 equal solid colours and colour code AC equals blend colours. If you require a pattern using blend colours in Highline 630 and Highline Loop E16, this will require a production trial run prior to final production. Patterns containing blend colours are marked with the symbol ☐, indicating that a trial run is necessary.

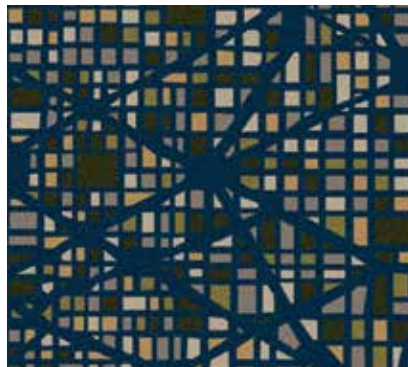
Recolour

SELECT DESIGN



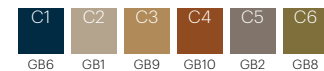
CHANGE COLOUR OF BACKGROUND

(Choose between GB1-GB12)



CHANGE PATTERN COLOUR

(Choose between GB1-GB12 and AC colours)



Identification characteristics	Standard	Highline 80/20 1900 WT	Highline 80/20 1400 WT	Highline 80/20 1100 WT
Construction	ISO 2424	Tufted cut pile	Tufted cut pile	Tufted cut pile
Pile material	DIR 96/73, 96/74	80% wool, 20% polyamide	80% wool, 20% polyamide	80% wool, 20% polyamide
Colouration	-	Millitron	Millitron	Millitron
Backing	eTL	WT – Woven textile	WT – Woven textile	WT – Woven textile
Dimensions	ISO 3018	Approx. 400 cm	Approx. 400 cm	Approx. 400 cm
Gauge	ISO 2424	1/8	1/8	1/8
Total thickness	ISO 1765	Approx. 10.0 mm	Approx. 8.5 mm	Approx. 8.0 mm
Surface pile thickness	ISO 1766	Approx. 7.5 mm	Approx. 6.0 mm	Approx. 5.0 mm
Tufts	ISO 1763	Approx. 167,000 per m ²	Approx. 137,000 per m ²	Approx. 120,000 per m ²
Total carpet weight	ISO 8543	Approx. 3,350 g/m ²	Approx. 2,900 g/m ²	Approx. 2,600 g/m ²
Pile yarn weight	eTL	1,900 g/m ²	1,400 g/m ²	1,100 g/m ²
Surface pile density	ISO 8543	Approx. 0.200 g/cm ³	Approx. 0.170 g/cm ³	Approx. 0.150 g/cm ³
edge soil protection	eTL	Yes	Yes	Yes
Moth-proofed	eTL	Yes	Yes	Yes
Performance characteristics				
Performance areas	EN 1307	Class 33 – Commercial – Heavy	Class 33 – Commercial – Heavy	Class 32 – Commercial – General
Castor chair suitability	EN 985	-	-	-
Suitability for use on stairs	EN 1963	-	Yes	Yes
Static control	eTL	Permanently antistatic	Permanently antistatic	Permanently antistatic
Suitability for under floor heating	ISO 8302	-	Yes	Yes
Acou. insu. from impact noise	EN ISO 717-2/eTL	29 dB	31 dB	27 dB
Acoustical absorption	ISO 354/eTL	0.30 aW	0.25 aW	0.25 aW
Safety and environmental characteristics				
Fire classifications	IMO DK, MK D, DIBT AbZ. no CH, VKF/AEAI EN 13501-1 Euroclass	- Approved Z-156.601-479 C _{fl} -s1 C _{fl} -s1	Certified Approved Z-156.601-479 C _{fl} -s1 C _{fl} -s1	Certified Approved Z-156.601-479 B _{fl} -s1 B _{fl} -s1
Indoor air	Green Label Plus DIM Certificate BASTA Emissions dans l'air intérieur GECA	Approved No. 006 Registered A+/A+ -	Approved No. 006 Registered A+/A+ -	Approved No. 006 Registered A+/A+ -
Environmental profile	Bre Byggvarudeklaration Environmental Product Declaration BREEAM-NOR LEED	- - - - Qualified	- BVD 3 - - Qualified	- BVD 3 - - Qualified
CE Labeling	EN 14041 Declaration of Performance	Certified DOP:9711-8C	Certified DOP:9711-8C	Certified DOP:9711-8B
Manufacturer characteristics				
Quality management	ISO 9001	Audited and verified by Bureau Veritas Certification		
Environmental management	ISO 14001	Audited and verified by Bureau Veritas Certification		
Eco management	EMAS	Audited and verified by Bureau Veritas Certification		
Occupational Health & Safety	DS/OHSAS 18001	Audited and verified by Bureau Veritas Certification		
Corporate Social Responsibility	DS 49001	Audited and verified by Bureau Veritas Certification		
Carpet Recycling UK	Member	www.carpetrecyclinguk.com		

For full technical specs and installation and maintenance guides see www.egecarpets.com

Highline 1100 WT	Highline 910 WT	Highline 750 WT	Highline 630 WT	Highline Loop WT
Tufted cut pile	Tufted cut pile	Tufted cut pile	Tufted cut pile	Tufted loop pile
100% recycled polyamide	100% polyamide	100% polyamide	100% polyamide	100% polyamide
Millitron	Millitron	Millitron	Millitron	Millitron
WT – Woven textile	WT – Woven textile	WT – Woven textile	WT – Woven textile	WT – Woven textile
Approx. 400 cm	Approx. 400 cm	Approx. 400 cm	Approx. 400 cm	Approx. 400 cm
1/8	1/10	1/8	1/10	1/10
Approx. 8.0 mm	Approx. 7.5 mm	Approx. 7.0 mm	Approx. 6.0 mm	Approx. 6.5 mm
Approx. 5.5 mm	Approx. 5.0 mm	Approx. 4.5 mm	Approx. 4.0 mm	Approx. 4.0 mm
Approx. 199,000 per m ²	Approx. 236,000 per m ²	Approx. 127,000 per m ²	Approx. 242,000 per m ²	Approx. 164,000 per m ²
Approx. 2,550 g/m ²	Approx. 2,350 g/m ²	Approx. 2,250 g/m ²	Approx. 2,050 g/m ²	Approx. 2,200 g/m ²
1,100 g/m ²	910 g/m ²	760 g/m ²	630 g/m ²	680 g/m ²
Approx. 0.155 g/cm ³	Approx. 0.145 g/cm ³	Approx. 0.130 g/cm ³	Approx. 0.120 g/cm ³	Approx. 0.115 g/cm ³
Yes	Yes	Yes	Yes	Yes
-	-	-	-	-
Class 33 – Commercial – Heavy	Class 33 – Commercial – Heavy	Class 32 – Commercial – General	Class 33 – Commercial – Heavy	Class 33 – Commercial – Heavy
Continuous use	Continuous use	-	Continuous use	Continuous use
Yes	Yes	-	Yes	Yes
Permanently antistatic	Permanently antistatic	Permanently antistatic	Permanently antistatic	Permanently antistatic
Yes	Yes	Yes	Yes	Yes
27 dB	28 dB	26 dB	25 dB	24 dB
0.20 aW	0.20 aW	0.20 aW	0.20 aW	0.20 aW
- Approved Z-156.601-441 C _{fl} -s1 C _{fl} -s1	- Approved Z-156.601-441 C _{fl} -s1 C _{fl} -s1	- Approved Z-156.601-441 C _{fl} -s1 C _{fl} -s1	Certified Approved Z156.601-441 C _{fl} -s1 C _{fl} -s1	- Approved Z-156.601-440 B _{fl} -s1 B _{fl} -s1
Approved No. 006 Registered A+/A+ Approved	Approved No. 006 Registered A+/A+ Approved	Approved No. 006 Registered A+/A+ Approved	Approved No. 006 Registered A+/A+ Approved	Approved No. 006 Registered A+/A+ Approved
ENP434 BVD 3 EPD-ege-2013103-CBC1-EN Approved with WTA backing Qualified	- BVD 3 - Approved with WTA backing Qualified	ENP434 BVD 3 - Approved with WTA backing Qualified	ENP434 BVD 3 - Approved with WTA backing Qualified	- BVD 3 - - Qualified
Certified DOP:9711-4C	Certified DOP:9711-4C	Certified DOP:9711-4C	Certified DOP:9711-3C	Certified DOP:9711-14B
Audited and verified by Bureau Veritas Certification				
Audited and verified by Bureau Veritas Certification				
Audited and verified by Bureau Veritas Certification				
Audited and verified by Bureau Veritas Certification				
Audited and verified by Bureau Veritas Certification				
www.carpetrecyclinguk.com				

ege[®]

THE URGE TO EXPLORE SPACE

www.egecarpets.com