

# Avia



# ege<sup>®</sup>

THE URGE TO EXPLORE SPACE





## Welcome to ege's world of endless carpet design opportunities

ege is one of the leading European suppliers of unique carpet solutions. We provide a carpet concept focusing on our three core values: design, quality and respect.

Explore our lightweight Avia Carré carpets that have several unique characteristics. Due to our modern and innovative production process, we offer you total freedom of design. You can choose any colour and any design you like – and we will be able to fulfill your demand.

ege meets the strict requirements of the aviation sector. We are specialised in producing lightweight carpets in a very strong

quality and with a remarkably short production lead time. To ensure safety on board, the products pass the requirements according to FAR §25.853.

Respect is something we give and responsibility is something we take. Being the first carpet company in the world to obtain the very comprehensive CSR certificate DS 49001 we have cemented our environmentally friendly profile. We are EMAS certified as well.

Reach new heights with your aircraft interior. Explore space with ege.

## We believe the environment is a serious matter

We work hard to minimise the environmental impact caused by the production of our carpets.

ege's declared CSR objective is to contribute to a more sustainable world by continually striving to improve how we handle environmental, social and financial challenges, for the benefit of future generations. For instance, we are the only carpet manufacturer in the world to have gained the CSR standard DS 49001, which is the Danish version of the internationally recognised ISO 26001 standard. DS 49001 is a management system for corporate social responsibility, which creates sustainable business processes. Certification requires ege to conform to a broad range of requirements related to good leadership, human rights, labour conditions, environmental conditions, sound business practices and consumer relations as well as local community development and involvement.

### Avia Carré Ecoline produced from 100% recycled yarn

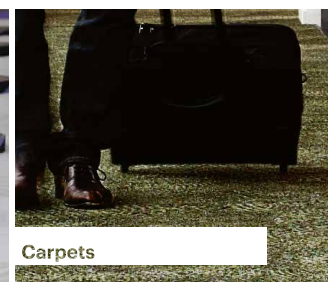
We have taken up the challenges involved in reducing, regenerating and recycling. Therefore, our Avia Carré Ecoline collection

is produced in an innovative lightweight material that reduces the fuel consumption and on top of that, the collection gives you total freedom of design meaning that any imaginable design is possible.

### From regenerated fishing nets to carpets

Fishing nets account for one tenth of the waste in the ocean. Abandoned fishing nets can drift for months or years and be a threat to sea life. At ege we use Aquafil's ECONYL® yarns produced from fishing nets. Once the fishing nets are collected and cleaned, they are physically and chemically broken down and reborn as strong and hardwearing yarns for carpets. Other components are fluff and yarn leftovers from production.

The carpet fibres are white and can therefore be dyed on our Mil-litron dyeing system. This means that we can offer you beautiful and modern carpets that combine flexibility, comfort and environmental benefits.









EQ87727-2  
w: 195.1 cm x l: 195.1 cm

K5295



100 cm

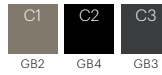


EQ87727-10  
w: 195.1 cm x l: 195.1 cm

K5295

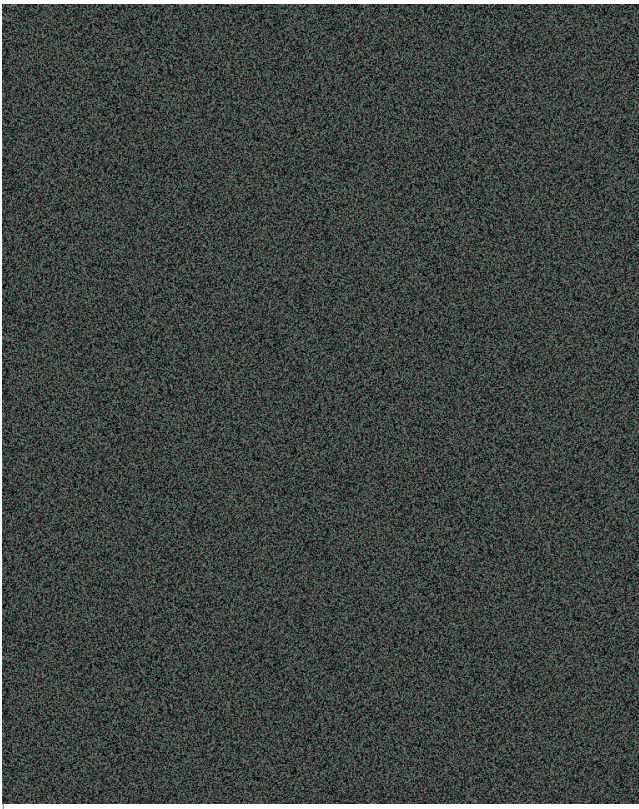


100 cm



EQ87727-11  
w: 195.1 cm x l: 195.1 cm

K5295



100 cm



EQ87727-12  
w: 195.1 cm x l: 195.1 cm

K5295



100 cm





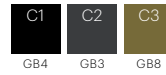
EQ87704-2  
w: 48.8 cm x l: 48.8 cm

K5295



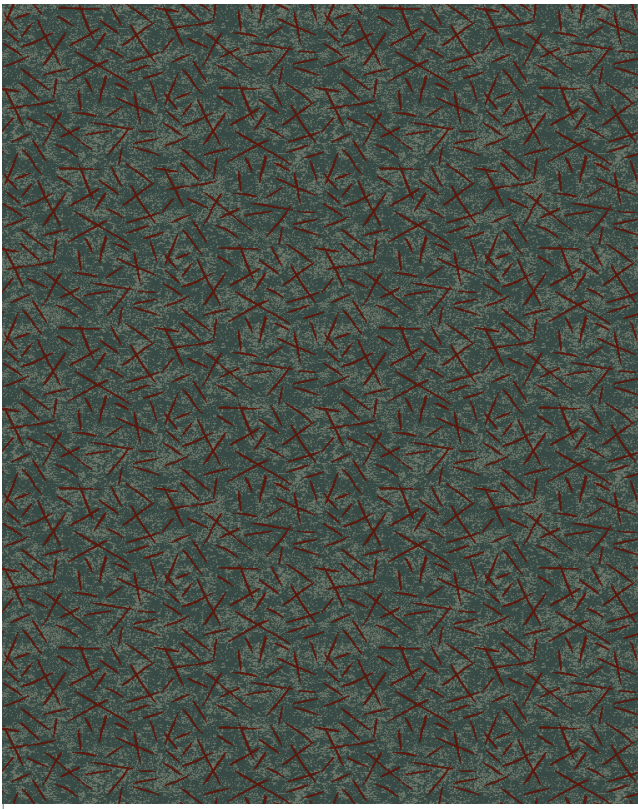
EQ87704-4  
w: 48.8 cm x l: 48.8 cm

K5295



EQ87704-8  
w: 48.8 cm x l: 48.8 cm

K5295



EQ87704-9  
w: 48.8 cm x l: 48.8 cm

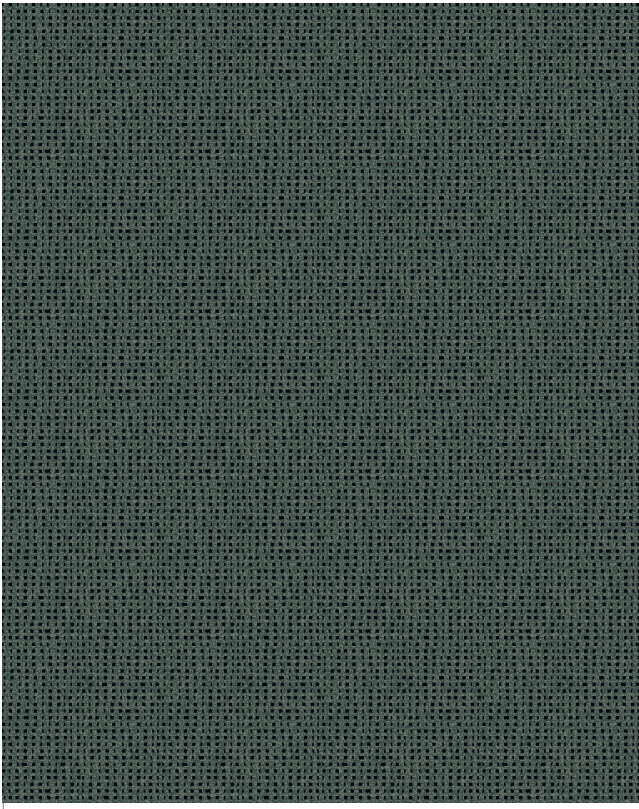
K5295





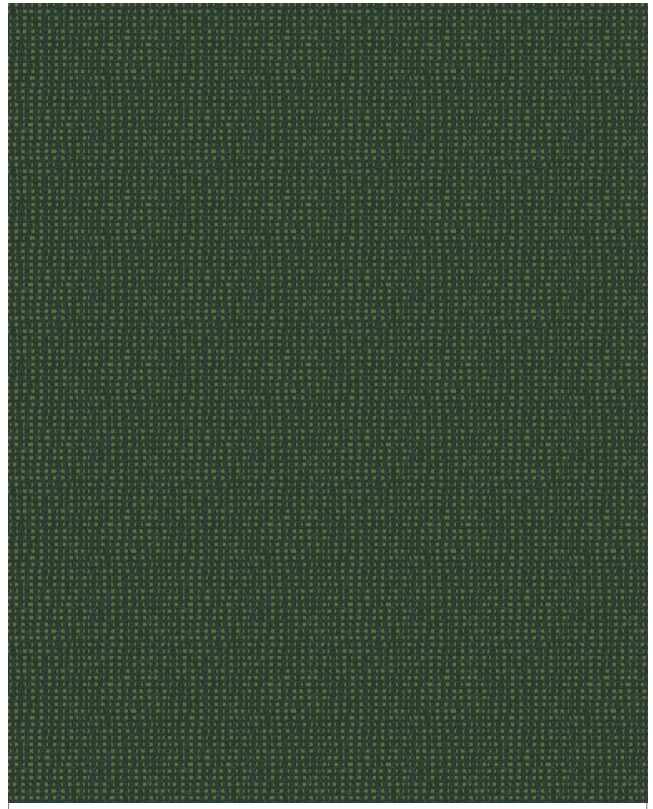
EQ87701-11  
w: 24.4 cm x l: 24.4 cm

K5295



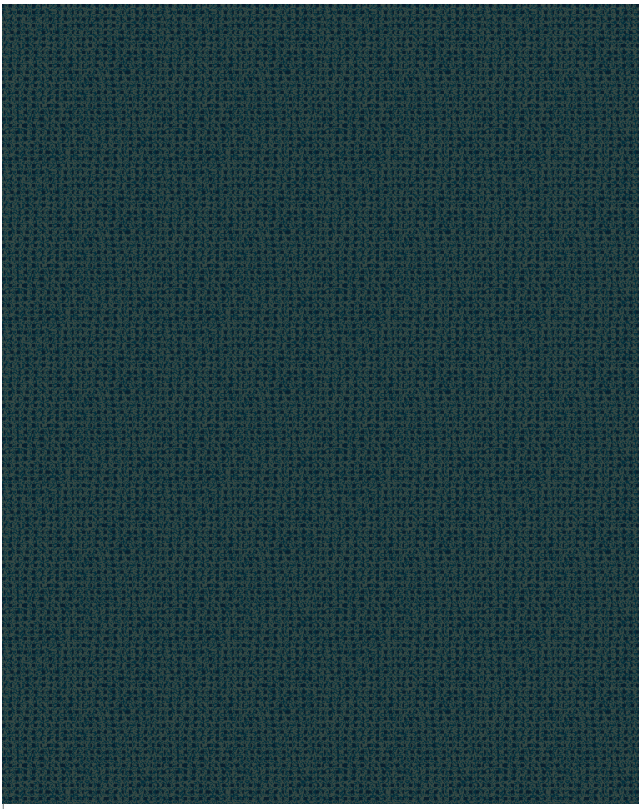
EQ87701-8  
w: 24.4 cm x l: 24.4 cm

K5295



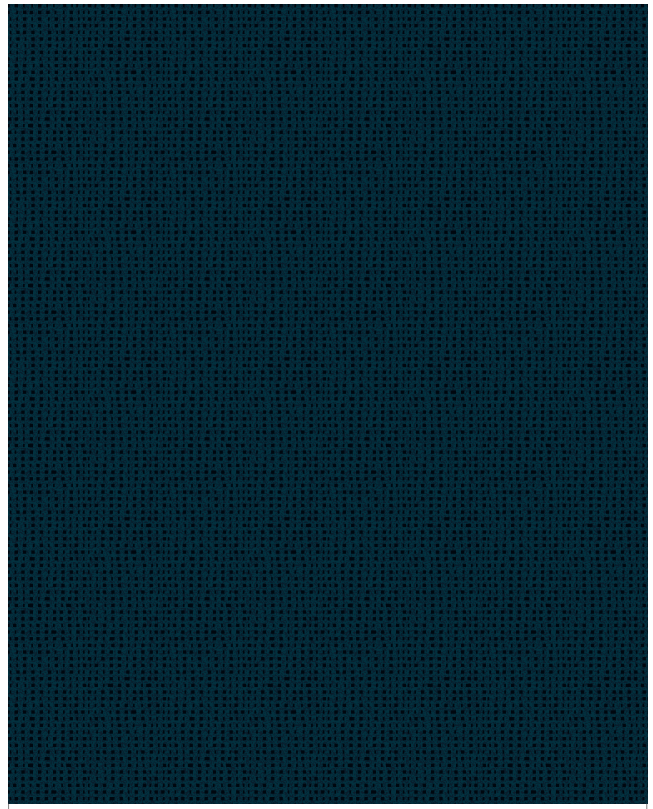
EQ87701-3  
w: 24.4 cm x l: 24.4 cm

K5295

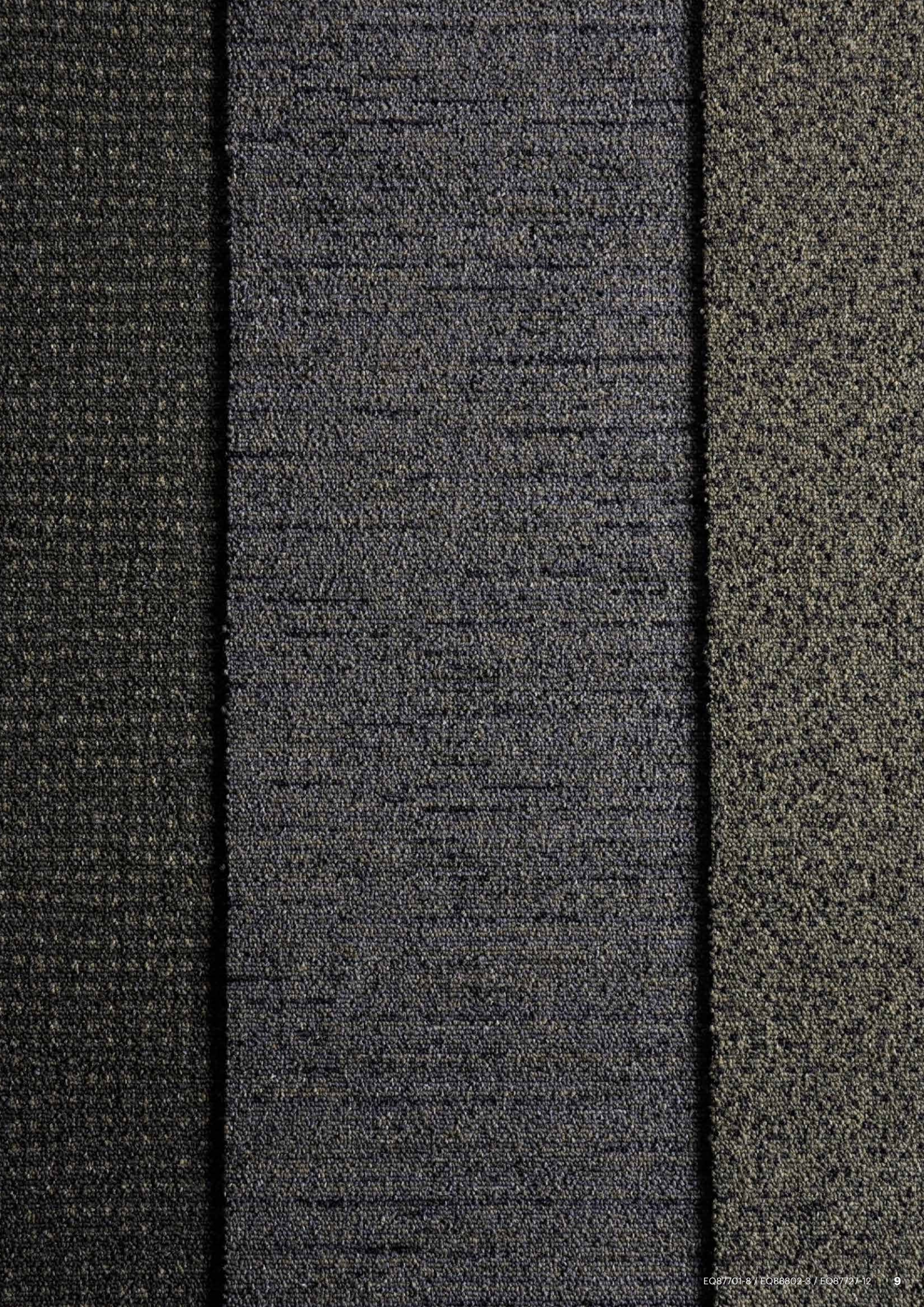


EQ87701-2  
w: 24.4 cm x l: 24.4 cm

K5295









EQ88802-5  
w: 195.1 cm x l: 195.1 cm

K5295



100 cm



GB4 GB6 GB5

EQ88802-2  
w: 195.1 cm x l: 195.1 cm

K5295



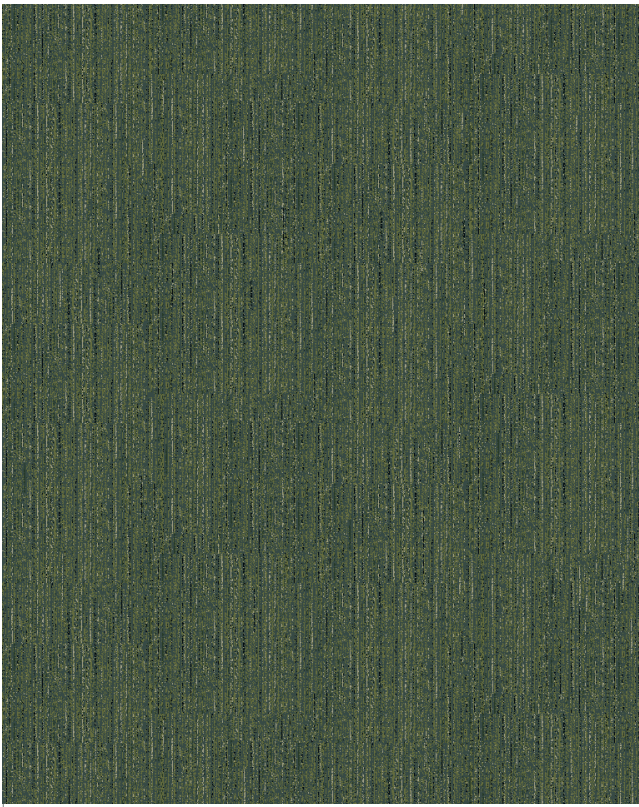
100 cm



GB4 GB3 GB2

EQ88802-3  
w: 195.1 cm x l: 195.1 cm

K5295



100 cm



GB7 GB3 GB8 GB1 GB4

EQ88802-4  
w: 195.1 cm x l: 195.1 cm

K5295



100 cm



AC15 GB2 GB3 GB9 GB4



EQ88803-2  
w: 195.6 cm x l: 208.3 cm

K5295

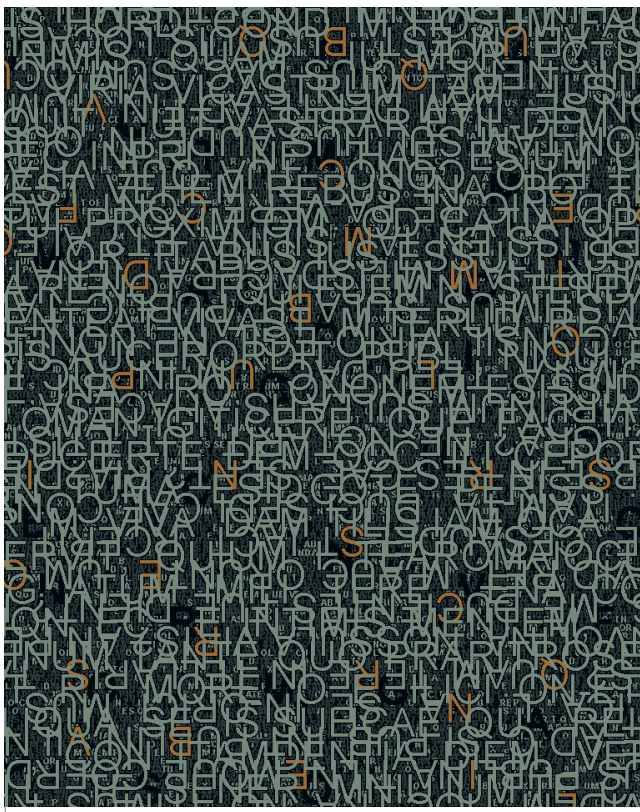


100 cm



EQ88803-4  
w: 195.6 cm x l: 208.3 cm

K5220

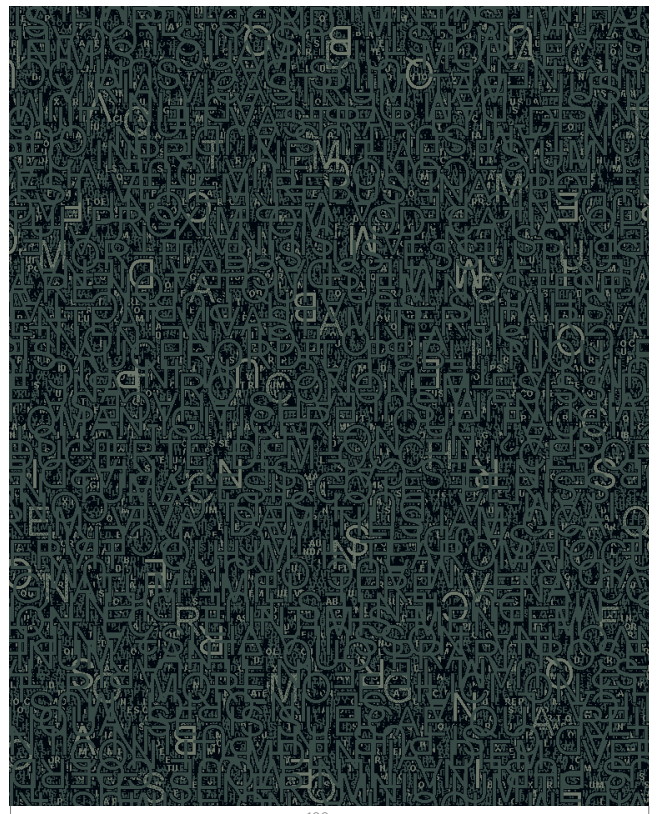


100 cm

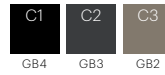


EQ88803-3  
w: 195.6 cm x l: 208.3 cm

K5295

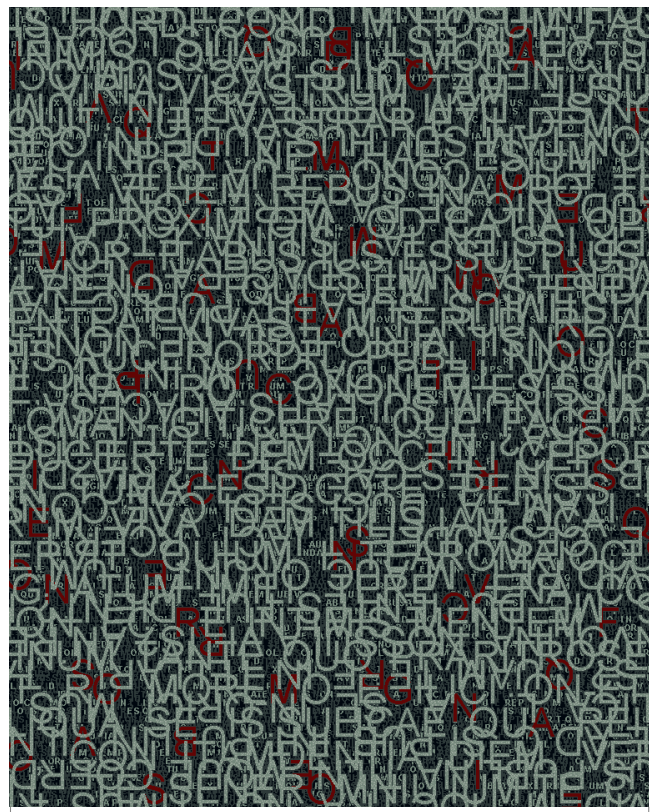


100 cm



EQ88803-5  
w: 195.6 cm x l: 208.3 cm

K5220



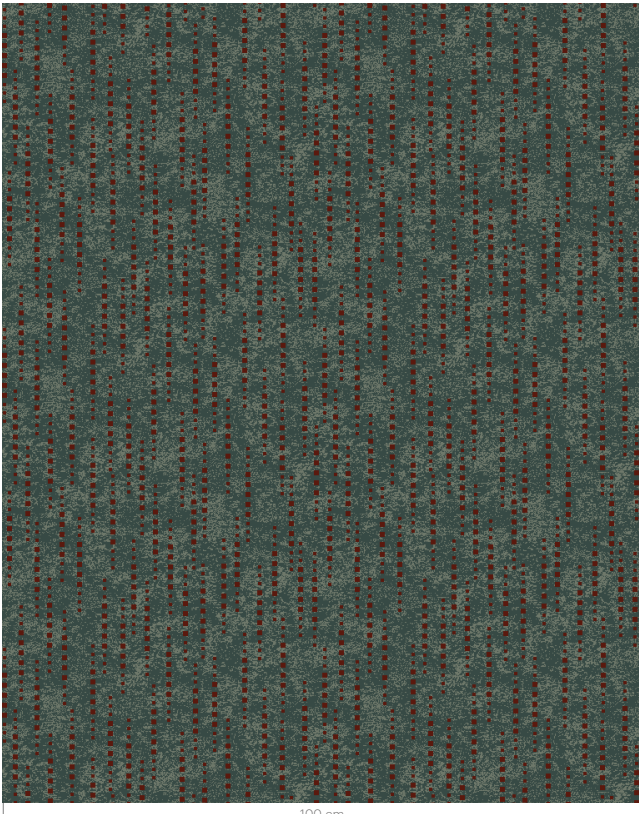
100 cm





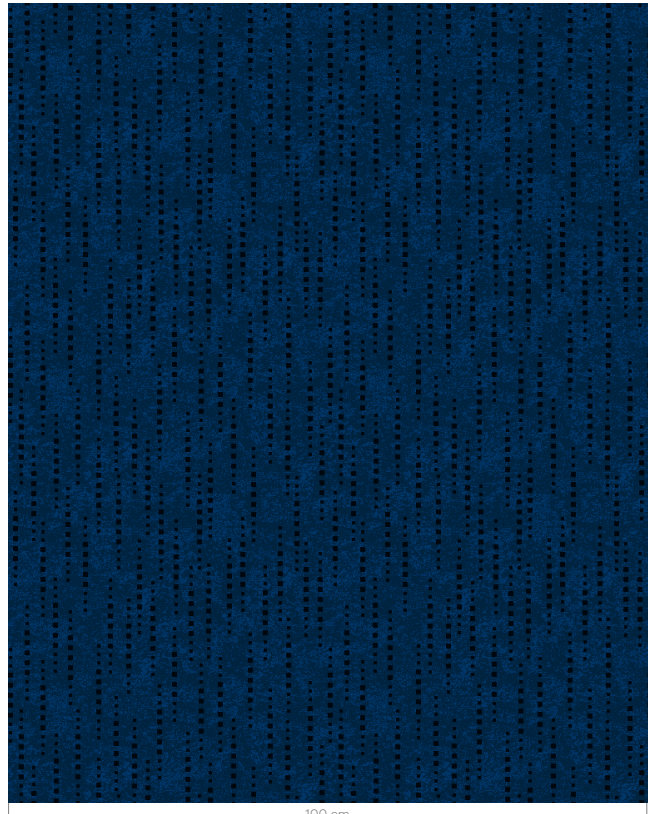
EQ87700-9  
w: 48.8 cm x l: 48.8 cm

K5295



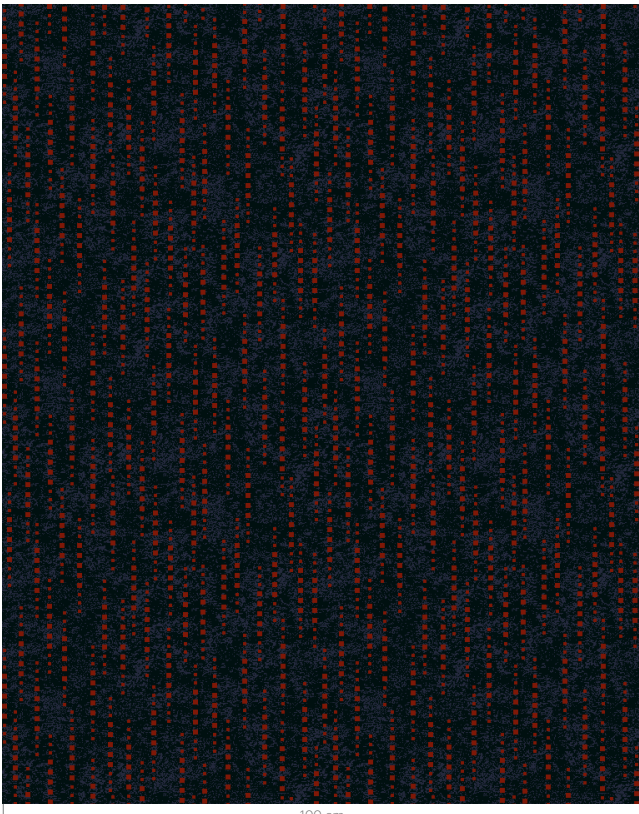
EQ87700-6  
w: 48.8 cm x l: 48.8 cm

K5220



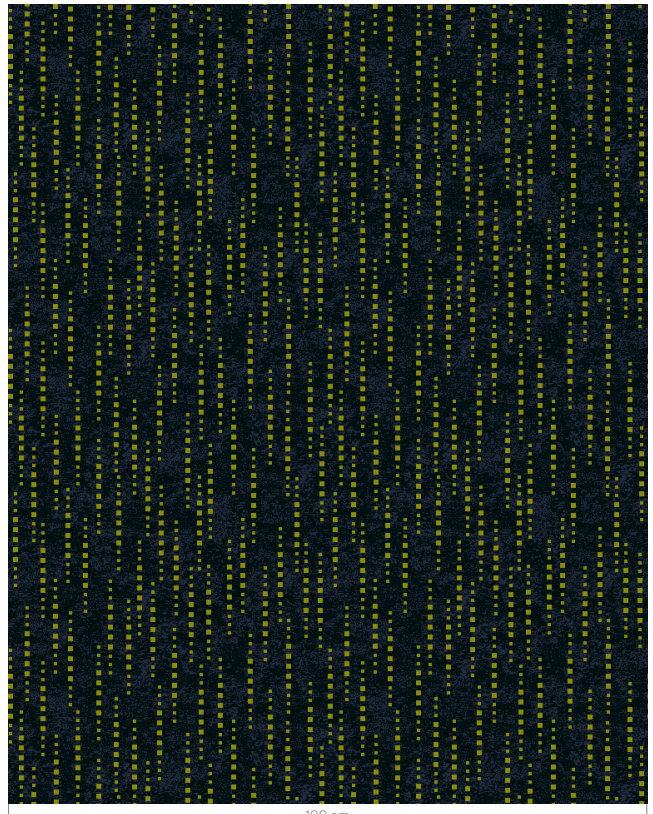
EQ87700-8  
w: 48.8 cm x l: 48.8 cm

K5275



EQ87700-5  
w: 48.8 cm x l: 48.8 cm

K5275





## Avia Carré Ecoline

Avia Carré Ecoline offers you freedom of design meaning that almost any imaginable design is possible. Due to our advanced colour technology, we can fulfill your design dreams. Avia Carré Ecoline has a unique green profile due to the fact that it is produced from 100% regenerated yarn. This collection is produced in an innovative lightweight material.

### **The Avia Carré Ecoline concept offers:**

- Total freedom of design and colours
- Environmentally friendly
- Effective noise reduction
- Resistant to soiling
- Easy maintenance and cleaning
- Very durable
- Antistatic properties
- 48-hour sample service

## The design process

### **Idea**

At eye, we take pride in listening to your story, your ideas and your wishes. Whether you have a sketch or an abstract idea. To that, we add our expertise, experience and creativity to make a design suggestion that fulfills all of your dreams.

### **Design print & design layout**

The next step is creating a design print, which is an initial suggestion of the layout, for instance based on your sketch, photos and atmospheres from existing collections as inspiration. This process continues until you have approved the design print. After that, we make a design layout that illustrates how the textile flooring will look in a room setting.

### **Sample**

As there is a difference in seeing the design on a printout versus seeing and feeling it on a piece of actual textile flooring in the

specified quality and design size, we always make a 1 x 1 m sample before we go into production.

### **2D presentation**

When you are set on the layout, we make a 2D presentation that allows you to make sure that the chosen design corresponds with the actual architecture.

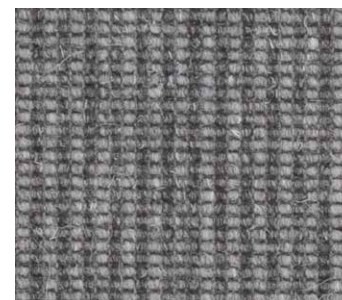
### **Planning**

Finally, on behalf of your wishes and requirements we schedule when to produce, deliver and install your custom textile floor. We have one of the shortest lead times on the market and can produce your textile flooring within 2-3 weeks from approval. The design lead time is 1-2 weeks depending on complexity and size of order.





STRUCTURE



EXTREME

## Avia Extreme and Avia Structure

### Avia Extreme

Avia Extreme is an exclusive, flat woven textile flooring in 20% polyamide and 80% pure, new wool that adds a luxurious look and feel to the cabin. Avia Extreme comes in 9 colours that all match the modern aircraft interior. The collection is produced in a lightweight quality and meets some of the market's strictest requirements in terms of durability and quality.

### The Avia Extreme concept offers:

- 9 colours
- Effective noise reduction
- Resistant to soiling
- Easy maintenance and cleaning
- Very durable
- Antistatic properties
- 48-hour sample service

### Avia Structure

Avia Structure is a stylish textile flooring in an elegant flat-woven quality. This lightweight collection has a simple and minimalistic expression that perfectly matches the modern aircraft interior. The collection is available in 12 colours, which have been carefully selected to match the latest colour and material trends on the aviation market. Avia Structure meets some of the market's strictest requirements in terms of durability and quality, making it easy for you to find a solution to suit the requirements and needs of any individual project.

### The Avia Structure concept offers:

- 12 colours
- Effective noise reduction
- Resistant to soiling
- Easy maintenance and cleaning
- Very durable
- Antistatic properties
- 48-hour sample service
- Custom colour from 200 m<sup>2</sup>



# Technical specifications

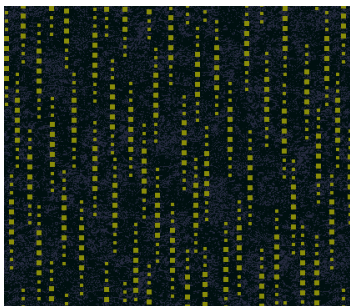
Safety characteristics	Standard	Avia Extreme	Avia Structure	Avia Carré Ecoline
CE Labeling	EN 14041	Certified	Certified	Certified
Fire classifications	14 CFR Part 25 (FAR) §25.853 JAR 25 §25.853	Certified	Certified	Certified
Static control	eTL	Permanently antistatic	Permanently antistatic	Permanently antistatic
Body voltage	ISO 6356	≤ 2 kV	≤ 2 kV	≤ 2 kV
<b>Identification characteristics</b>				
Construction	ISO 2424	Woven loop pile	Woven loop pile	Tufted loop pile
Pile material	DIR 71/307 CEE MOD.	80% wool, 20% polyamide	100% polyamide	100% polyamide
Colouration	-	Pre dyed	Continue	Millitron
Backing	eTL	Avia, flame retardant	Avia, flame retardant	Avia, flame retardant
Dimensions	CEN/TS 14159	Approx. 400 cm	Approx. 400 cm	Approx. 400 cm
Total thickness	ISO 1765	Approx. 3.4 mm	Approx. 4.2 mm	Approx. 5 mm
Total carpet weight	ISO 8543	Approx. 1,900 g/m <sup>2</sup>	Approx. 1,775 g/m <sup>2</sup>	Approx. 1,400 g/m <sup>2</sup>
Pile yarn weight	eTL	Approx. 690 g/m <sup>2</sup>	Approx. 700 g/m <sup>2</sup>	Approx. 440 g/m <sup>2</sup>
edge soil protection	eTL	Yes	Yes	Yes
<b>Performance characteristics</b>				
Performance areas	EN 1307	Class 33 – Commercial – Heavy	Class 33 – Commercial – Heavy	Class 33 – Commercial – Heavy
Colour fastness to light	ISO 105-B02	> 5	> 5	> 5
Colour fastness to rubbing – wet / dry	EN ISO 105-X12	> 3-4	> 3-4	> 3-4
Fastness to water	EN ISO 105-E01	> 3-4	> 3-4	> 3-4
<b>Guides</b>				
Installation	DK, N, S, GB, D, F	Dansk, Norsk, Svensk, English, Deutsch, Francais	Dansk, Norsk, Svensk, English, Deutsch, Francais	Dansk, Norsk, Svensk, English, Deutsch, Francais
Cleaning	DK, N, S, GB, D, F	Dansk, Norsk, Svensk, English, Deutsch, Francais	Dansk, Norsk, Svensk, English, Deutsch, Francais	Dansk, Norsk, Svensk, English, Deutsch, Francais
<b>Manufacturer characteristics</b>				
Factory certification	ISO 9001, ISO 14001, EMAS, OHSAS, DS 49001	Audited and verified by Bureau Veritas Certification	Audited and verified by Bureau Veritas Certification	Audited and verified by Bureau Veritas Certification
Carpet Recycling UK	www.carpetrecyclinguk.com	Member	Member	Member

eTL = internal result from the ege Test Laboratory (ISO9001 certified).

Due to continuous development of products and testing procedures any above declaration is subject to change without prior notification.

## Recolour

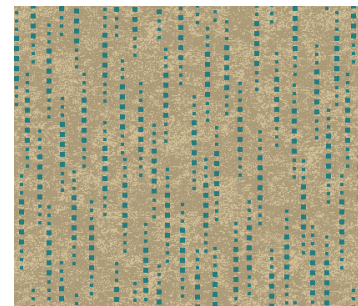
### SELECT DESIGN



### CHANGE COLOUR OF BACKGROUND (Choose between GB1-GB12)



### CHANGE PATTERN COLOUR (Choose between GB1-GB12 and AC colours)





**ege**<sup>®</sup>

THE URGE TO EXPLORE SPACE

[www.egecarpets.com](http://www.egecarpets.com)