

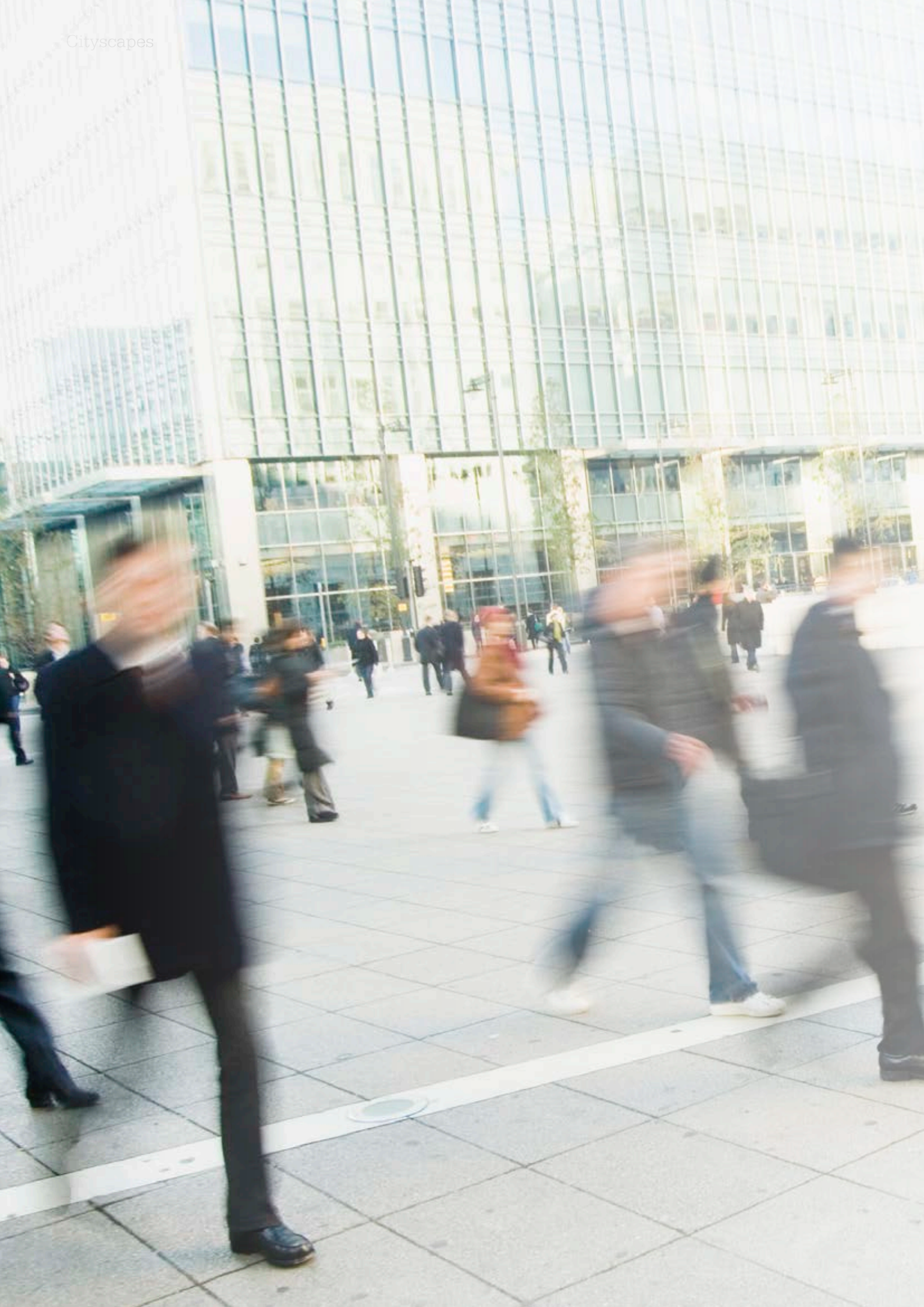


CITYSCAPES

MODULAR SHUFFLE by ege

ege[®]

design · quality · respect



CITYSCAPES – urban inspiration	4
MODULAR SHUFFLE by eye – a new modular concept	6
TOUCH OF NATURE in the city	8
BLUE CONSTRUCTIONS	22
URBAN CULTURE in shades of purple	32
THE SKY REFLECTED in glass and steel	42
LIGHT AND SHADOW between city walls	52
Special feature: ALMOST NEON	76
Collection overview	86
The MODULAR SHUFFLE concept – production and installation	92
Colour information	95
Technical specifications	98





CITYSCAPES




Urban inspiration

When walking through the streets of the city, every split second your eyes catch new fragments of a vibrating, faceted cityscape. An inspiring medley of walls, asphalt and neon lights.

Randomly zooming in and out on everyday life in the city, from close-ups on surfaces and graphics to aerial views on architecture and street plans, ege has created a unique modular collection: CITYSCAPES. CITYSCAPES is a collection of unique and expressive designs and is the first collection within the new modular concept MODULAR SHUFFLE by ege.

The CITYSCAPES collection presents 11 different designs in a selection of subdued and tone-on-tone colour themes ranging from greens over blues and purples to browns and neutral shades of greys and beiges.



In addition to the subdued standard colour themes, the CITYSCAPES designs are presented in an eye-catching palette of special colours. A story of bright, vibrant colours inspired by urban street style, graffiti, plastic gadgets and flashing neon signs. The energetic and exaggerated colours reflect a need for new and fresh beginnings and thus, aim at inspiring first movers to take an optimistic and fresh approach to interior design.



- Unique modular concept
- Eye-catching patterns on modular tiles 48 x 48 cm
- Each tile is unique
- Endless and repeatless installation
- Easy replacement
- Minimal wastage
- Recolourable
- Richly patterned design expression achieved from one design number only
- Minimum order requirement of 40 m²
- Modular tiles without PVC and bitumen
- Undisputed performance standard – EN 1307



CITYSCAPES

MODULAR SHUFFLE by ege

Introduction to the new modular concept

The MODULAR SHUFFLE concept is a brand new approach to modular design solutions offered by ege.

The concept offers a richly patterned design expression as an alternative to the more subdued and classic modular products available. The concept is targeted at those who are more adventurous design-wise but who, at the same time, do not want to compromise when it comes to parameters such as handling, installation and replacement flexibility.

Combining the creative design expression known from ege's Highline Express broadloom concepts with the flexibility of the ege modular express concept, a new method of creating flooring designs has been developed.

The shape, size and joins of the modular carpet tiles are used as integrated parts of the design, and they are essential elements in the creation of random and unique design expressions on the floor.

Due to the distinctive design and manufacturing process, each MODULAR SHUFFLE tile is unique and differs from the remaining tiles. When mixed, shuffled together and randomly installed, these unique modular tiles create outstanding and repeatless floorscapes.

Please note that the designs in the collection are presented in the catalogue as installation examples consisting of a number of different tiles installed randomly.

For a visual presentation of the MODULAR SHUFFLE production and fitting process, please see page 92.



TOUCH OF NATURE

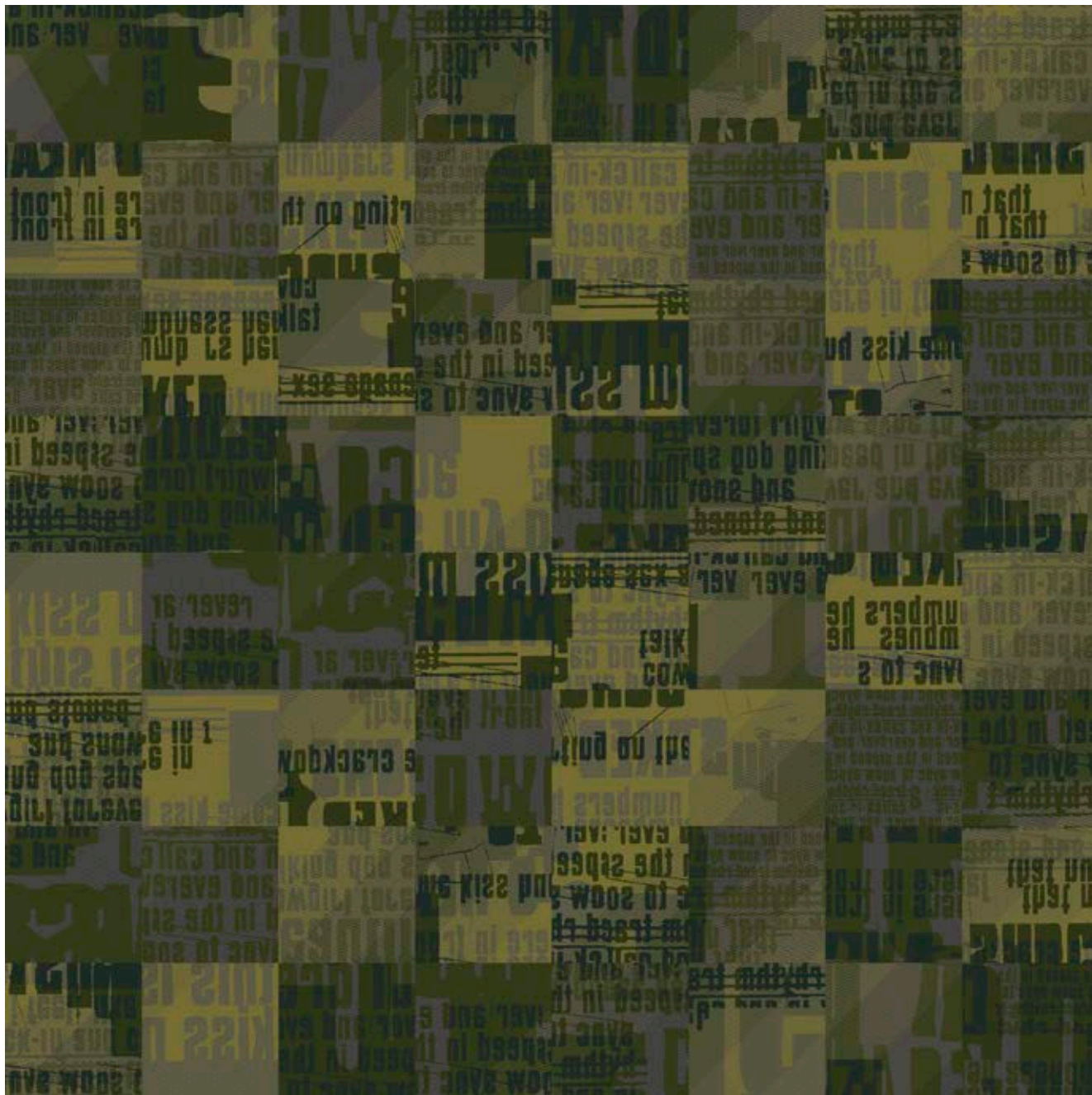
Greens inspired by rooftop gardens and other spots of nature in the city



NATURE IN THE CITY

RFM52955040 Double Dutch

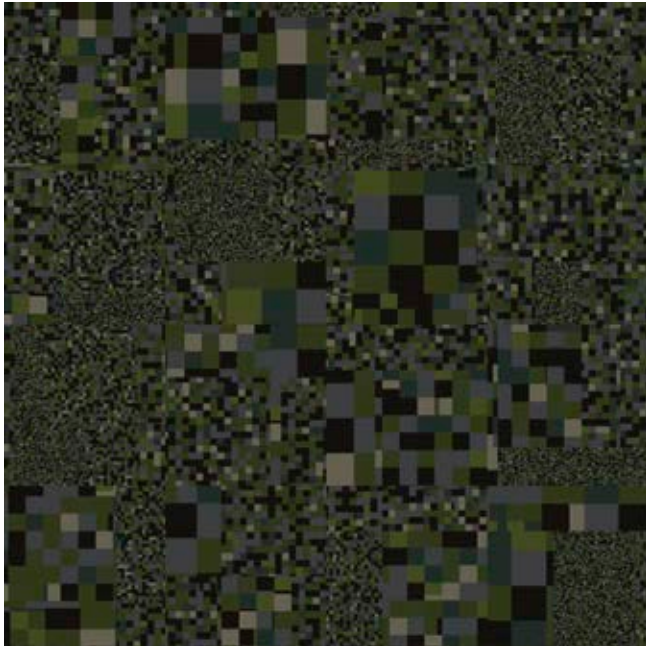
Installation example 8 x 8 tiles



Background 1		Background 2		Letters 1		Letters 2		Solid Letters	
C1	T1	C2	T2	C3	T3	C4	T4	C5	C6
GB3	AC27	GB8	AC27	GB7	AC30	AC16	AC30	AC44	GB7

RFM52955080 Pixellations

4 x 4 tiles



Main Colours			Secondary Colours					Effect
C1	C2	C3	C4	C5	C6	C7	C8	C9
GB4	GB3	GB7	AC30	AC44	AC44	AC16	AC31	GB4

RFM52955130 Subway

4 x 4 tiles

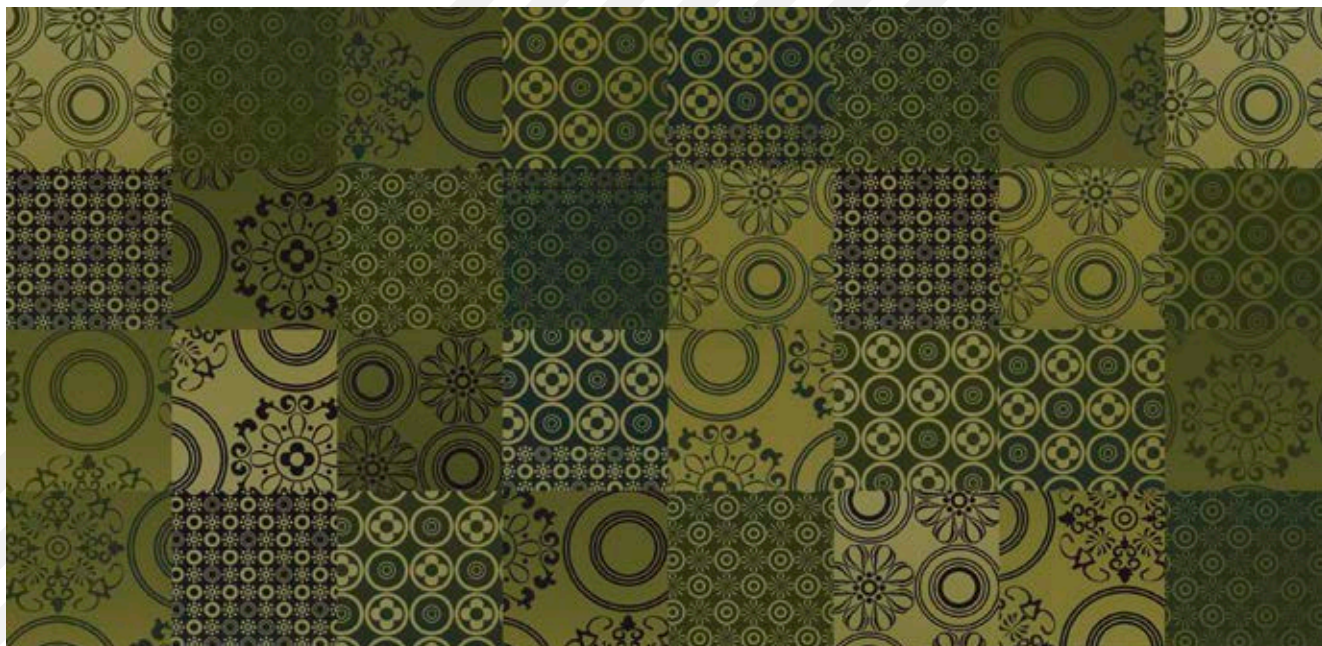


Colours				
C1	C2	C3	C4	C5
GB4	GB7	AC44	AC30	GB3



RFM52955100 Spanish Tiles

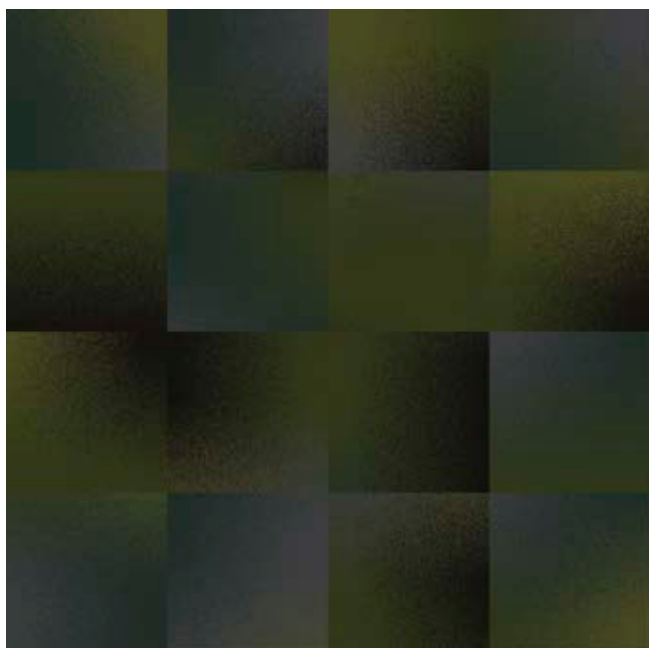
Installation example 8 x 4 tiles



Background Large Flowers			Large Flowers			Background Small Flowers			Small Flowers			
C1	C2	C3	C4	C5	C6	C7	C8	C9	C10	C11	C12	
AC28	GB8	AC30	GB7	AC44	AC17	GB7	AC44	AC17	AC28	GB8	AC30	Recolour each section tone-on-tone

RFM52955110 Spotlight

4 x 4 tiles



Colours						
C1	T1	C2	C3	C4	C5	T5
AC44	AC44	GB7	GB3	AC30	GB4	GB4

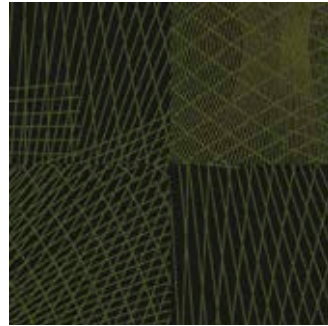
RFM52955060 Gradient

4 x 4 tiles



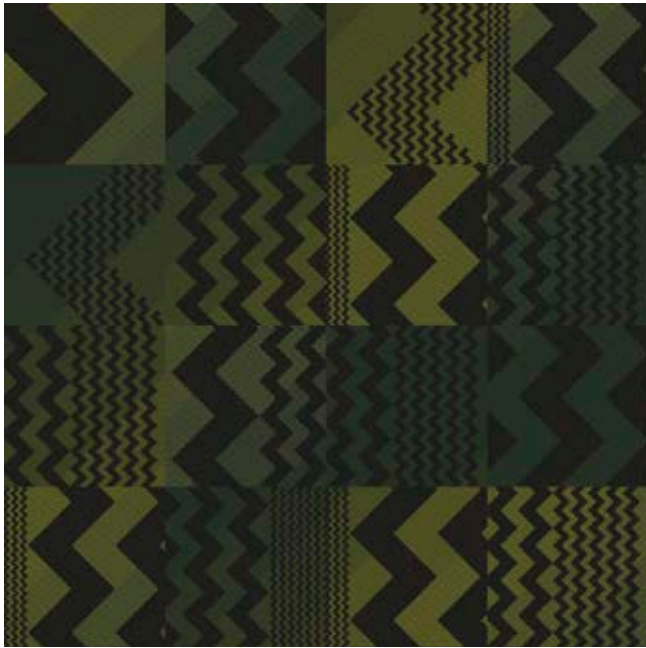
Background 1			Background 2			Background 3		
C1	T1A	T1B	C2	T2A	T2B	C3	T3A	T3B
GB7	GB8	AC44	GB8	AC28	GB1	GB2	GB1	GB1

RFM52955022 Construction 2 x 2 tiles



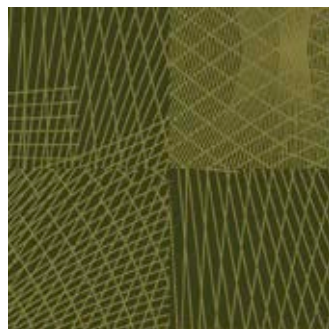
Background		Lines	
C1	T1	C2	T2
GB4	AC44	GB7	GB8

RFM52955140 Zig Zag 4 x 4 tiles



Zig Zag	Background 1	Background 2
C1	C2	C3
AC17	AC44	AC30
T1	T2	T3
GB7	GB7	GB8

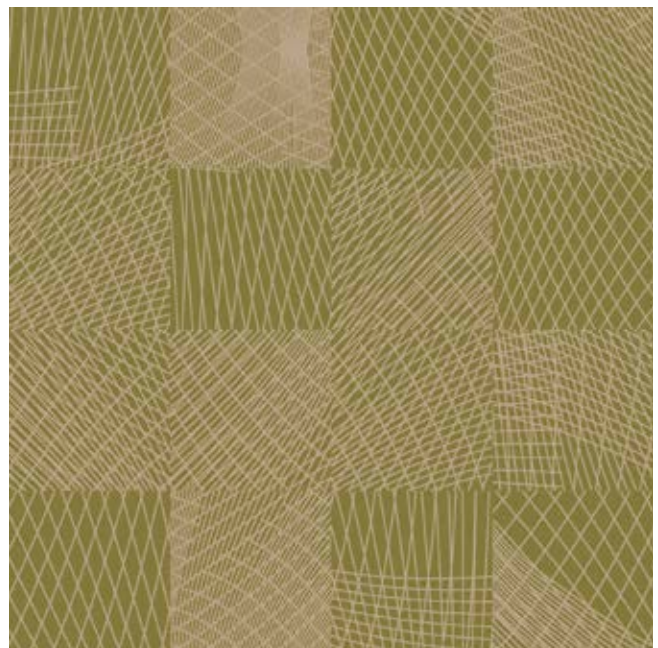
RFM52955021 Construction



Background		Lines	
C1	T1	C2	T2
GB7	AC30	GB8	AC28

RFM52955020 Construction

4 x 4 tiles



Background		Lines	
C1	T1	C2	T2
GB8	AC28	GB1	GB1



RFM52955010 Aerial Map

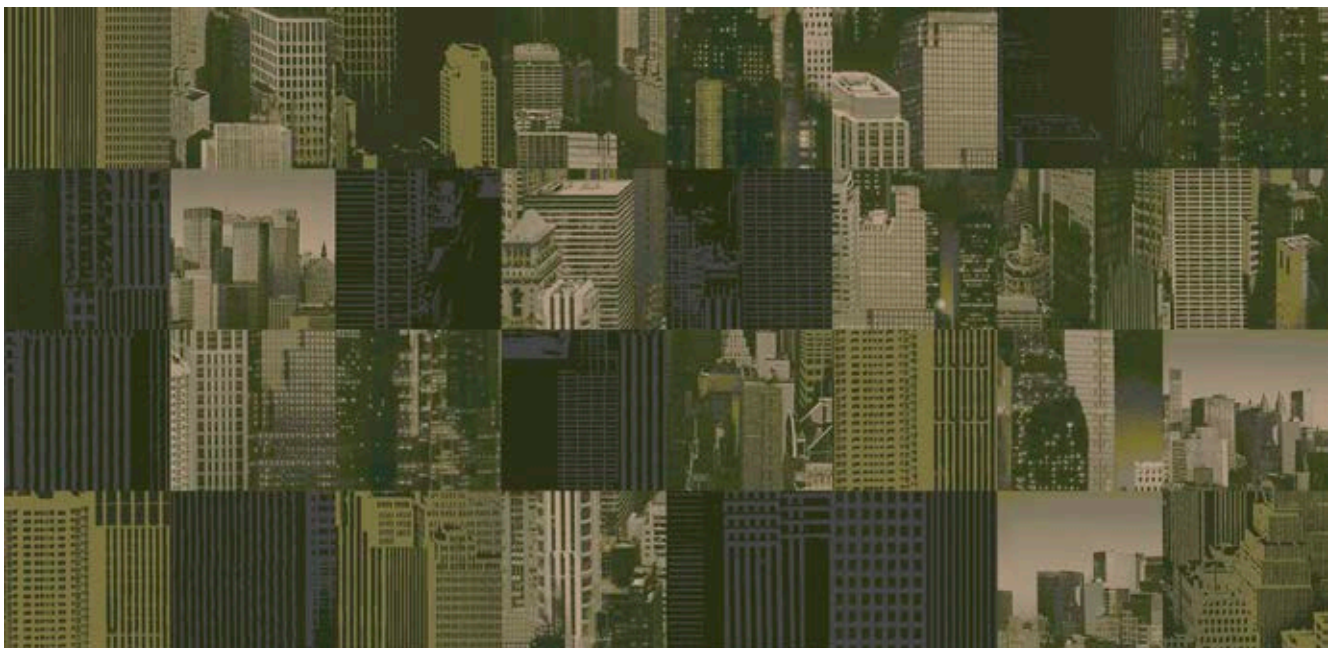
Installation example 8 x 4 tiles



Shadow	Background 1	Background 2	Highlight	Road
C1	C2 C3 C4 C5	C6 C7 C8 C9	C10	C11 T11
AC44	AC44 GB3 AC27 GB2	AC44 GB7 GB8 AC28	GB1	GB1 GB2

RFM52955090 Skylines

Installation example 8 x 4 tiles



Skyline Photos	Two-tone graphics:	Background 1	Graphic 1	Background 2	Graphic 2
C1 C2 T2 C3 T3 C4 C5 T5 C6	C7 T7 C8 T8 C9 T9 C10 T10				
BL4-7 AC30 GB7 GB3 GB8 GB8 GB2 GB8 GB1	GB7 AC44 GB3 AC16 GB7 GB3 GB8 GB2				

RFM52955120 Street Level

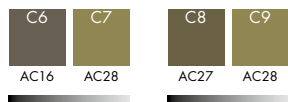
Installation example 8 x 8 tiles



Asphalt



Stone Effect



Metal Effect



RFM52205011 Aerial Map

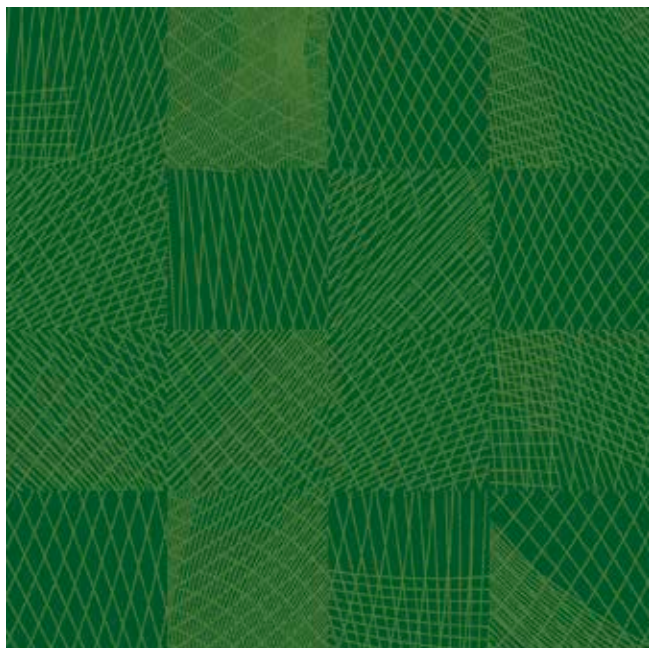
Installation example 8 x 8 tiles



Shadow	Background 1	Background 2	Highlight	Road
C1	C2 C3 C4 C5	C6 C7 C8 C9	C10	C11 T11
AC77	AC65 AC66 AC54 AC53	GB7 GB6 AC60 AC56	AC56	GB8 GB8

RFM52205023 Construction

4 x 4 tiles



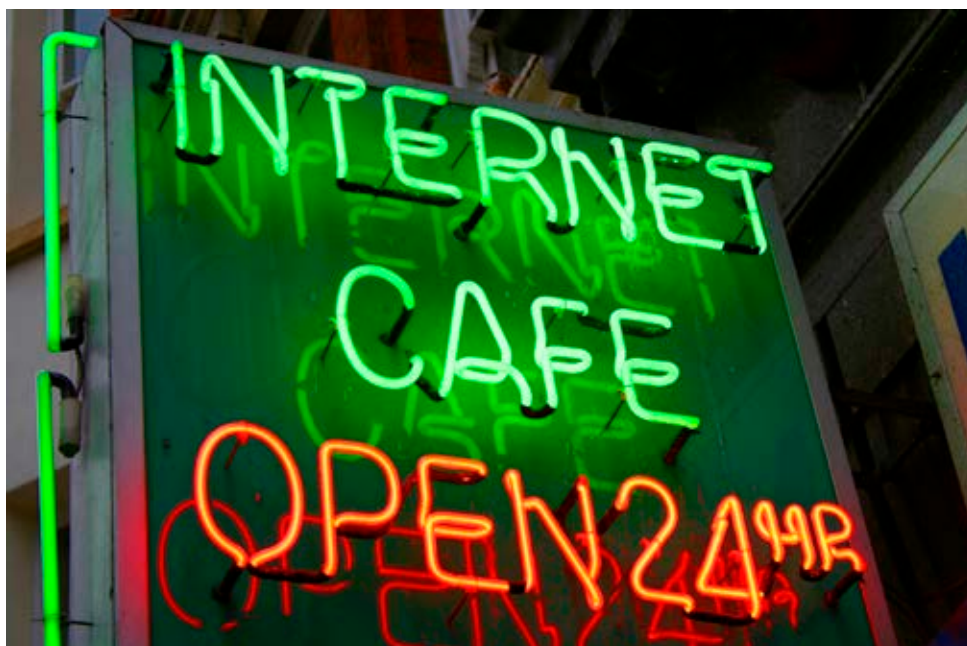
Background		Lines	
C1	T1	C2	T2
GB6	AC59	AC60	AC56

RFM52205041 Double Dutch

4 x 4 tiles

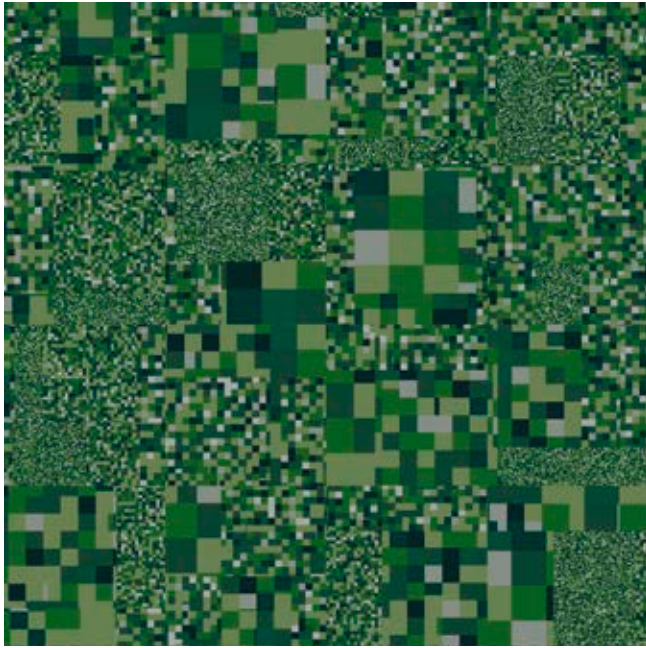


Background 1		Background 2		Letters 1		Letters 2		Solid Letters	
C1	T1	C2	T2	C3	T3	C4	T4	C5	C6
GB6	GB8	AC60	AC56	AC59	GB6	GB6	AC60	GB7	GB6



RFM52205081 Pixellations

4 x 4 tiles



Main Colours			Secondary Colours					Effect
C1	C2	C3	C4	C5	C6	C7	C8	C9
GB6	GB7	AC60	AC65	GB8	AC59	AC60	AC77	AC53



RFM52205141 Zig Zag

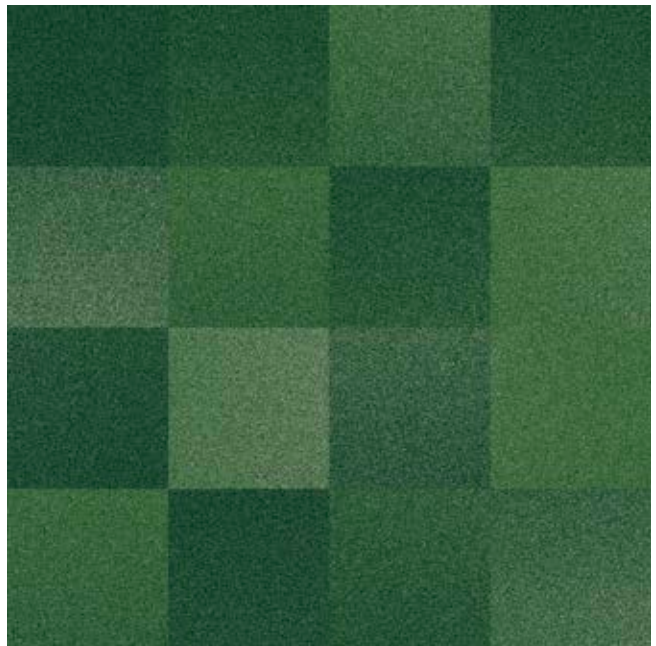
4 x 4 tiles



Zig Zag		Background 1		Background 2	
C1	T1	C2	T2	C3	T3
GB6	GB6	GB7	AC66	AC60	AC56

RFM52205061 Gradient

4 x 4 tiles



Background 1			Background 2			Background 3		
C1	T1A	T1B	C2	T2A	T2B	C3	T3A	T3B
GB7	AC77	GB6	GB6	AC60	AC56	GB8	AC56	GB1



RFM52205101 Spanish Tiles

Installation example 8 x 8 tiles



Background Large Flowers



Large Flowers



Background Small Flowers



Small Flowers



Recolour each section tone-on-tone

RFM52205131 Subway

Installation example 8 x 4 tiles

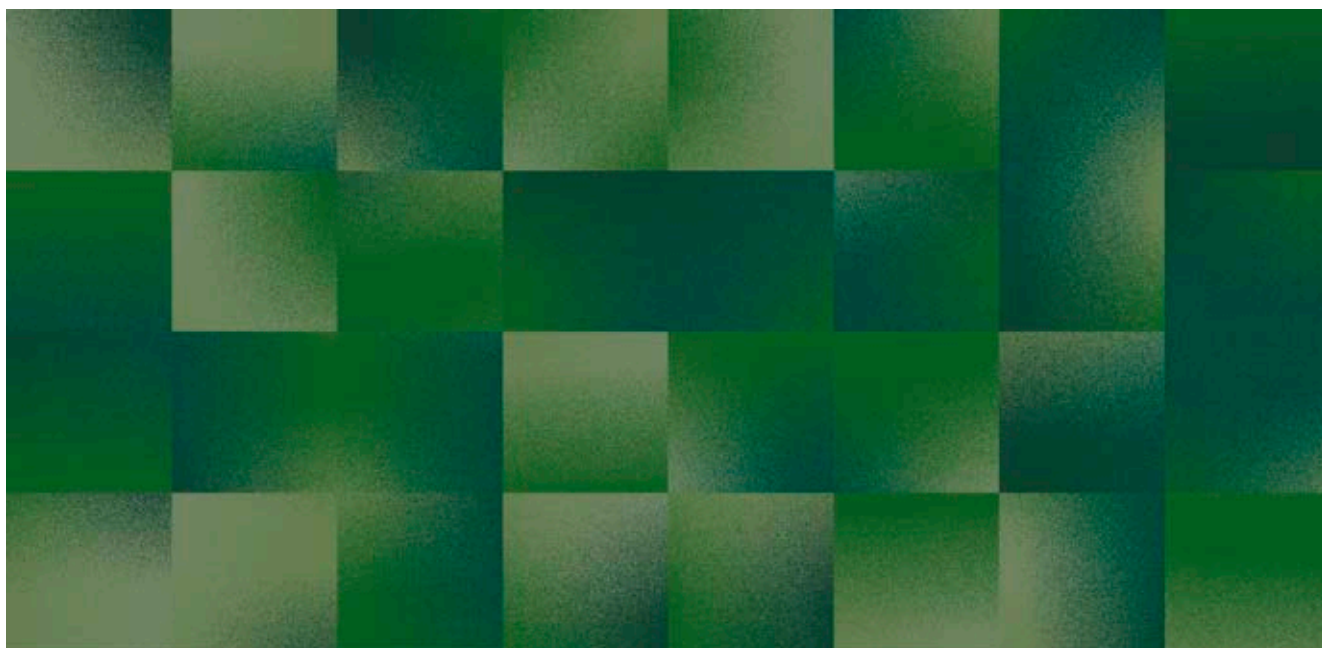


Colours

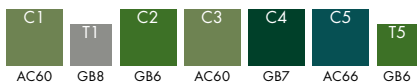


RFM52205111 Spotlight

Installation example 8 x 4 tiles



Colours



BLUE CONSTRUCTIONS

– Classic blue colours taken from architectural blueprints, business suits and traffic signs.

RFM52955142 Zig Zag

4 x 4 tiles





RFM52955024 Construction

Installation example 8 x 4 tiles



Background Lines

C1	T1	C2	T2
GB5	GB5	GB6	GB6

RFM52955042 Double Dutch

4 x 4 tiles



Background 1 Background 2 Letters 1 Letters 2 Solid Letters

C1	T1	C2	T2	C3	T3	C4	T4	C5	C6
GB6	AC18	AC43	AC46	GB5	AC20	GB6	AC18	GB4	BL5-6

RFM52955025 Construction 2 x 2 tiles



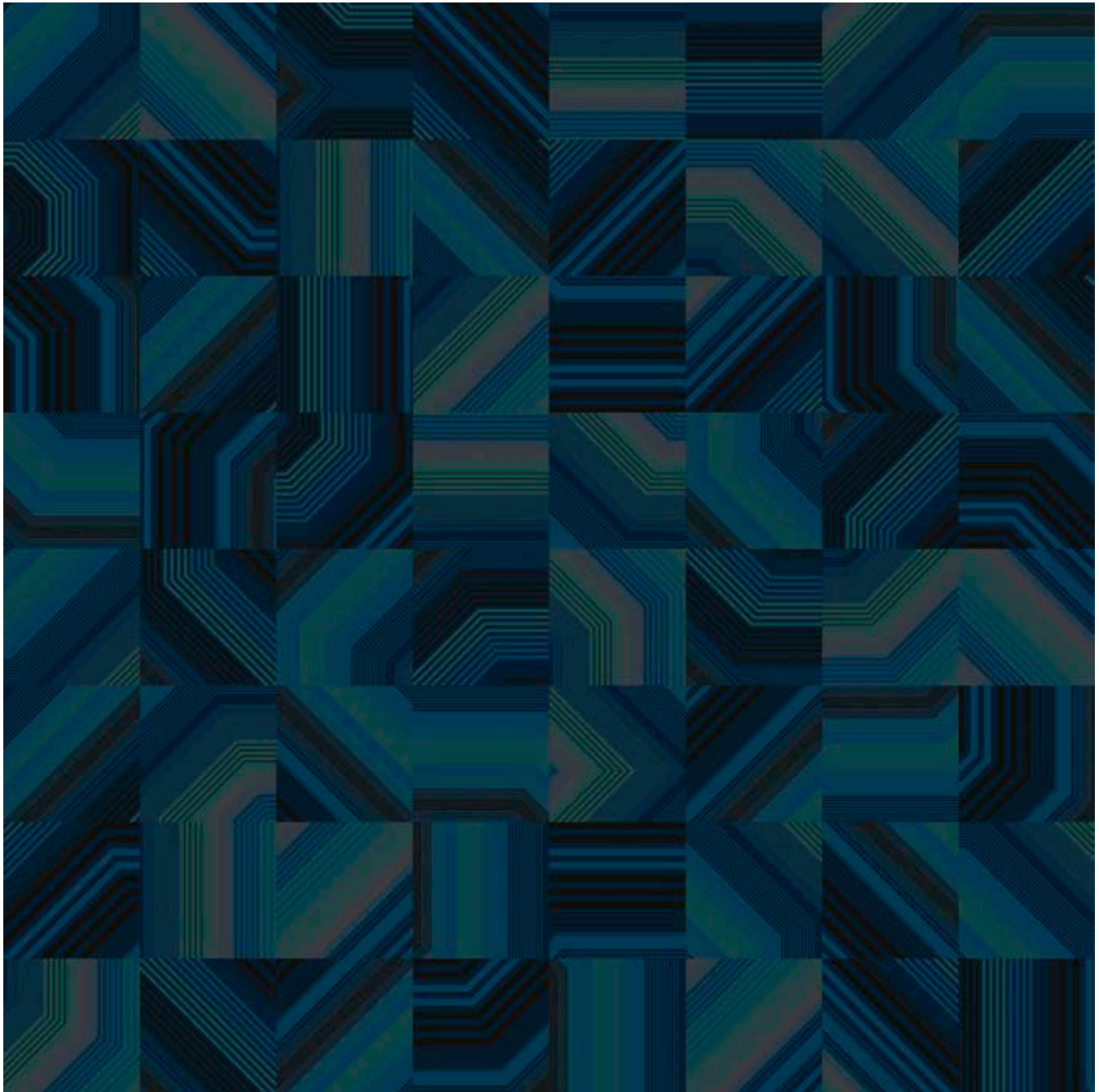
Background Lines

C1	T1	C2	T2
GB6	GB5	AC43	GB6



RFM52955132 Subway

Installation example 8 x 8 tiles

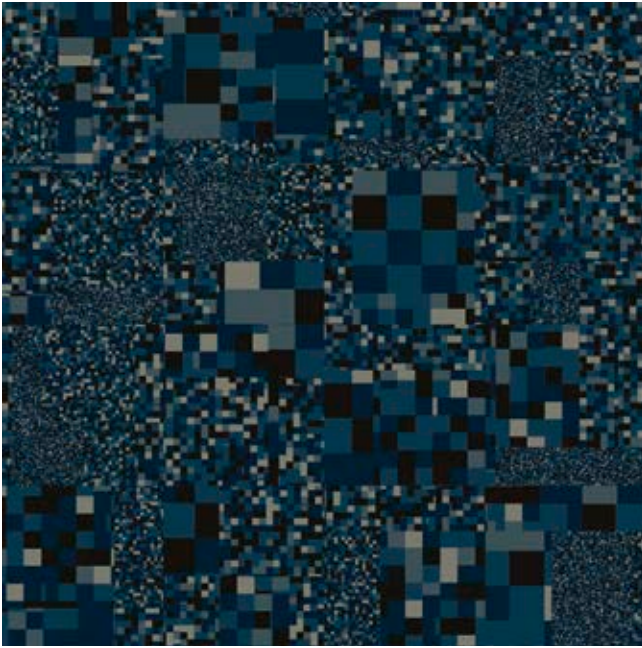


Colours



RFM52955082 Pixellations

4 x 4 tiles



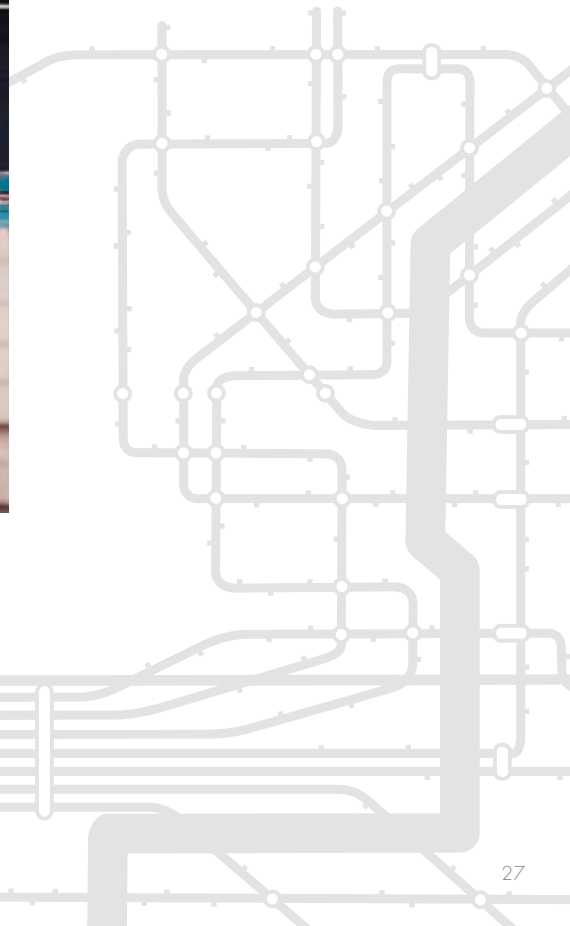
Main Colours			Secondary Colours					Effect
C1	C2	C3	C4	C5	C6	C7	C8	C9
GB6	GB4	GB5	AC43	GB6	AC43	GB5	GB2	GB2

RFM52955012 Aerial Map

4 x 4 tiles



Shadow	Background 1				Background 2												
C1	C2	C3	C4	C5	C6	C7	C8	C9									
GB4	GB4	AC20	AC19	AC18	GB4	GB5	GB6	AC18									
<table border="0"> <tr> <td>Highlight</td> <td colspan="2">Road</td> </tr> <tr> <td>C10</td> <td>C11</td> <td>T11</td> </tr> <tr> <td>AC46</td> <td>AC43</td> <td>AC43</td> </tr> </table>									Highlight	Road		C10	C11	T11	AC46	AC43	AC43
Highlight	Road																
C10	C11	T11															
AC46	AC43	AC43															



RFM52955121 Street Level

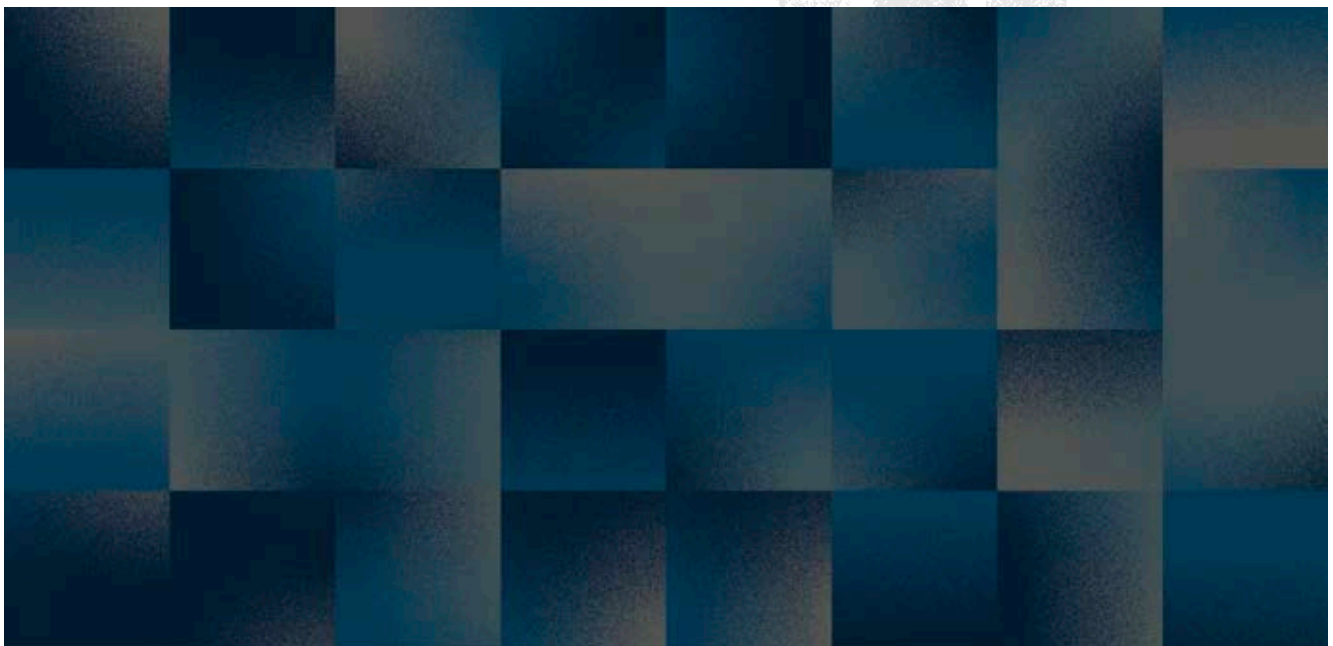
Installation example 8 x 4 tiles



Asphalt					Stone Effect		Metal Effect	
C1	C2	C3	C4	C5	C6	C7	C8	C9
GB4	GB5	GB6	AC43	GB2	AC19	AC46	AC19	AC46

RFM52955112 Spotlight

Installation example 8 x 4 tiles



Colours						
C1	T1	C2	C3	C4	C5	T5
GB5	GB5	GB6	AC21	AC46	AC43	AC43

RFM52955091 Skylines

Installation example 8 x 8 tiles



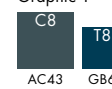
Skyline Photos



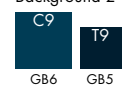
Two-tone graphics: Background 1



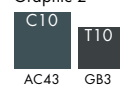
Graphic 1



Background 2



Graphic 2



RFM52955102 Spanish Tiles

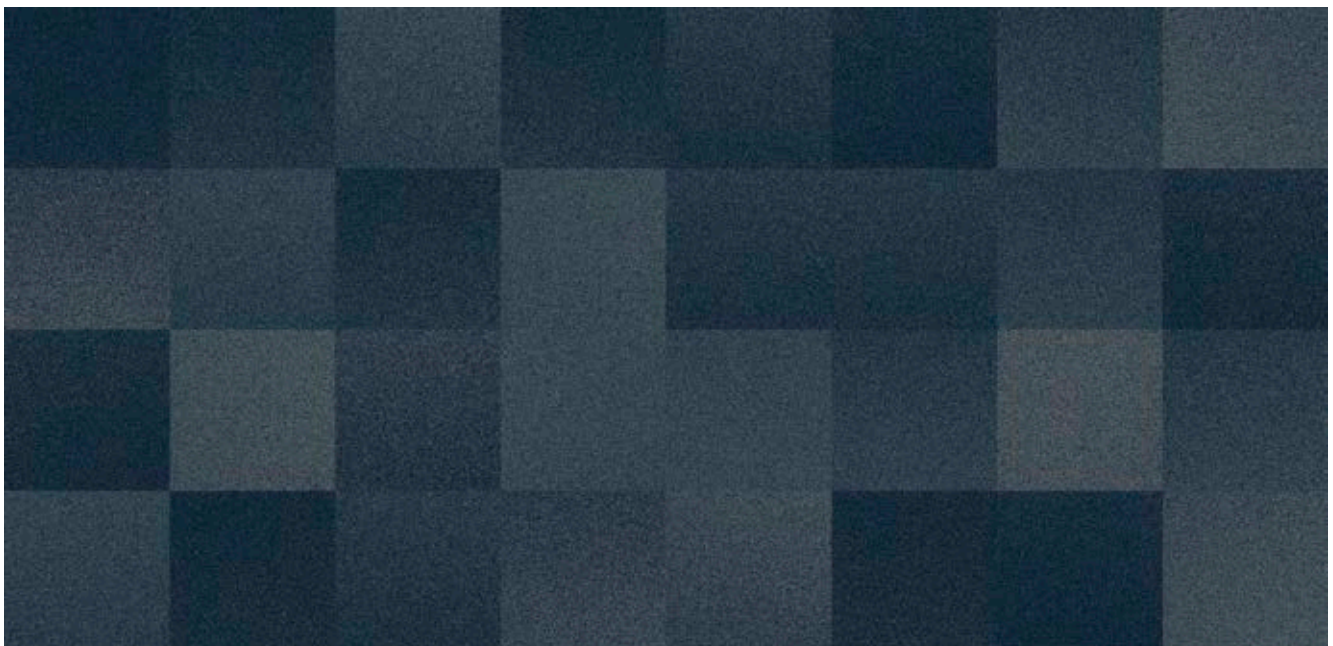
Installation example 8 x 4 tiles



Background Large Flowers	Large Flowers	Background Small Flowers	Small Flowers	
C1 C2 C3	C4 C5 C6	C7 C8 C9	C10 C11 C12	Recolour each section tone-on-tone
GB4 GB5 AC20	GB6 AC43 AC46	GB6 AC43 AC46	GB4 GB5 AC20	

RFM52955062 Gradient

Installation example 8 x 4 tiles



Background 1	Background 2	Background 3
C1 T1A T1B	C2 T2A T2B	C3 T3A T3B
GB5 GB4 GB6	AC43 GB6 AC46	GB2 AC43 GB2



SPOTLIGHT

URBAN CULTURE

in shades of purple

POETRY

Shades of purple with highlights
in red and turquoise.

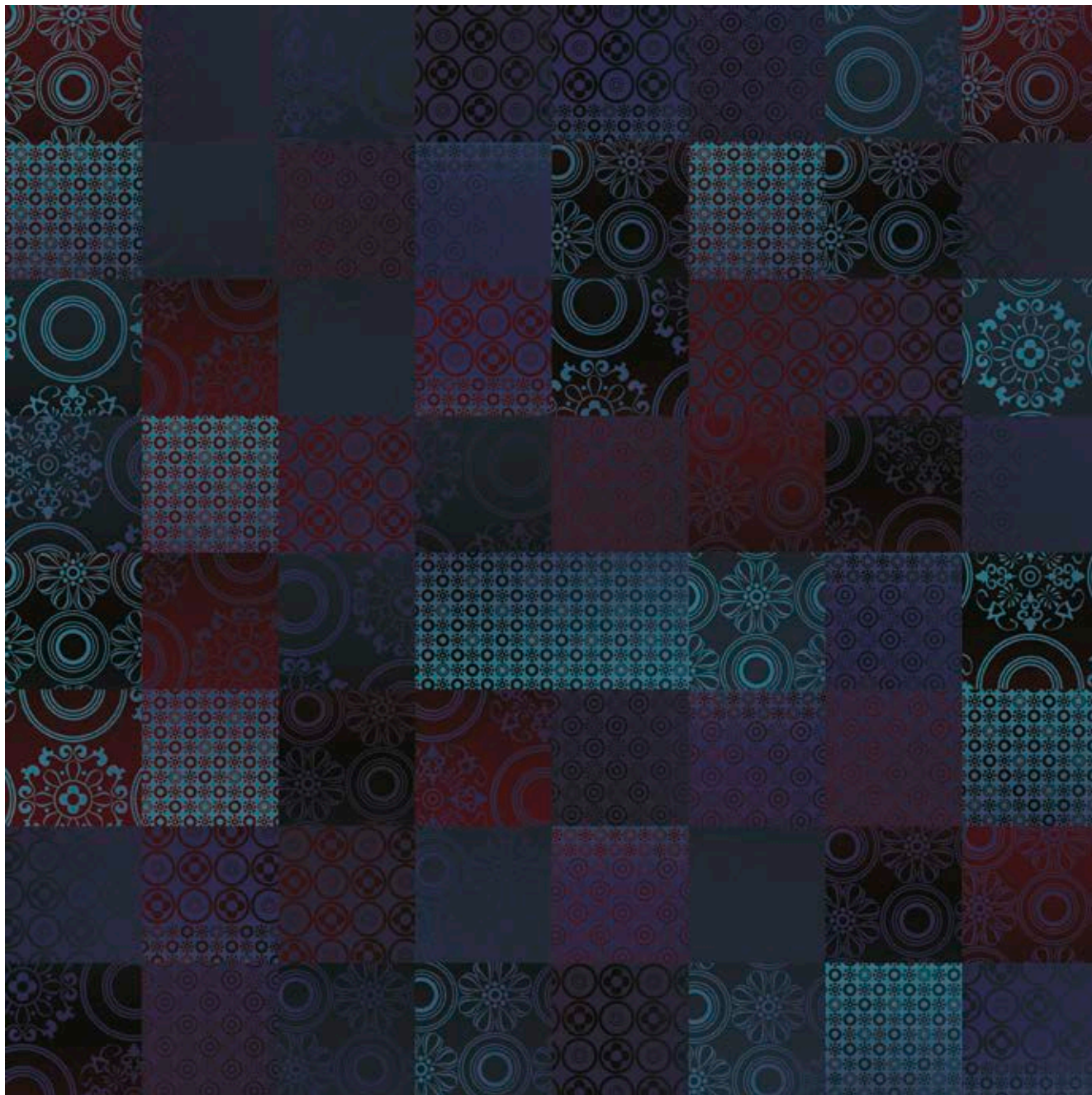
Colour combinations inspired
by a jazz concert at night.



CULTURE

RFM52755104 Spanish Tiles

Installation example 8 x 8 tiles



Background Large Flowers



Large Flowers



Background Small Flowers



Small Flowers



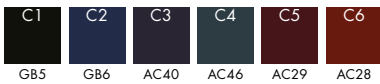
Recolour each section tone-on-tone

RFM52755133 Subway

4 x 4 tiles

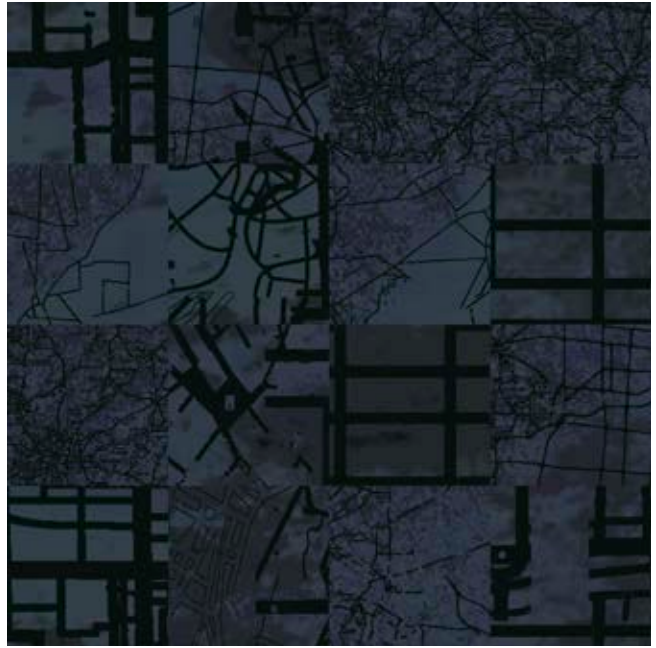


Colours



RFM52755014 Aerial Map

4 x 4 tiles



Shadow



Background 1



Background 2



Highlight

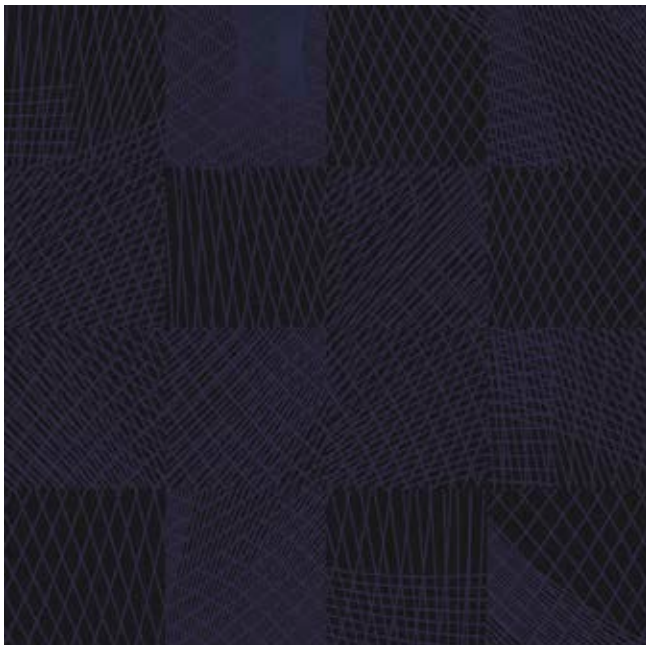


Road



RFM52755026 Construction

4 x 4 tiles



Background



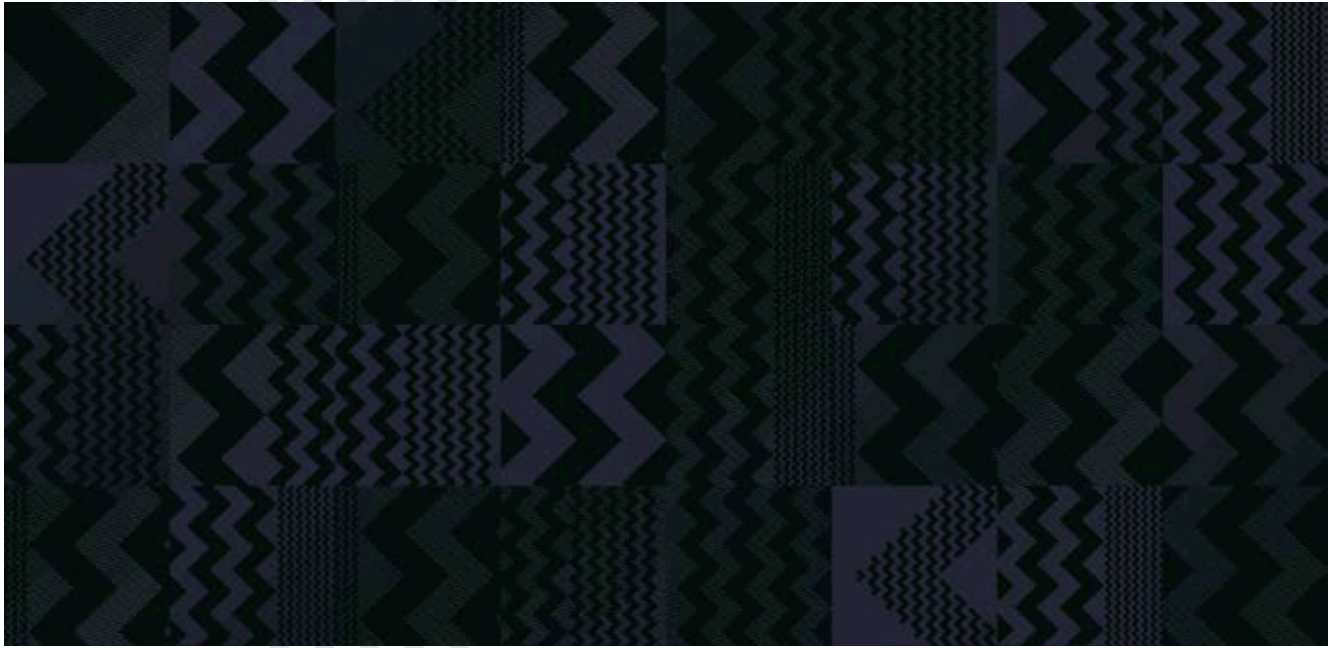
Lines





RFM52755144 Zig Zag

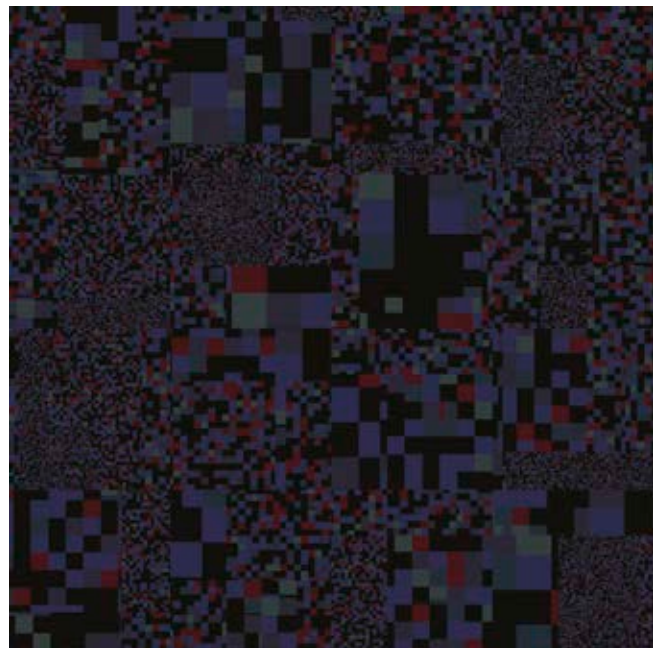
Installation example 8 x 4 tiles



Zig Zag	Background 1	Background 2
C1	C2	C3
T1	T2	T3
GB5	AC40 GB6	GB5 AC46

RFM52755084 Pixellations

4 x 4 tiles



Main Colours			Secondary Colours					Effect
C1	C2	C3	C4	C5	C6	C7	C8	C9
GB5	GB6	GB5	AC44	AC45	AC40	AC40	AC29	AC29



RFM52755123 Street Level

Installation example 8 x 4 tiles



Asphalt					Stone Effect		Metal Effect	
C1	C2	C3	C4	C5	C6	C7	C8	C9
GB5	AC40	GB6	AC39	AC38	AC46	AC43	AC46	AC43



mental

TY STADIUM
ON 20927

IC

SUNG



TTAC



SHREK
THE MUSICAL

THE CLOSER
MONDAYS 9

next to



TERMINATOR
SALVATION

THE PHANTOM OF THE OPERA

BIENVENIDOS
CHICAGO

McDonald's
Restaurant



McDonald's
Restaurant

FRIDAY'S

ame

47

ame

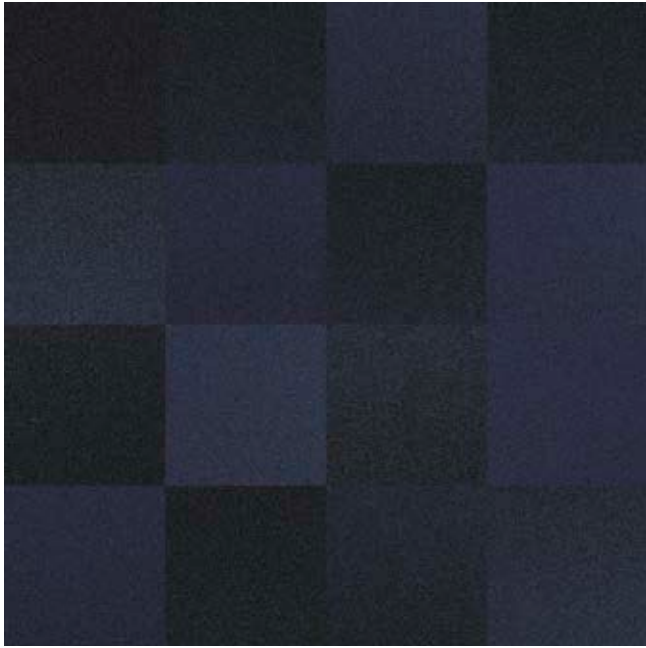
ame

ame

ame

RFM52755064 Gradient

4 x 4 tiles

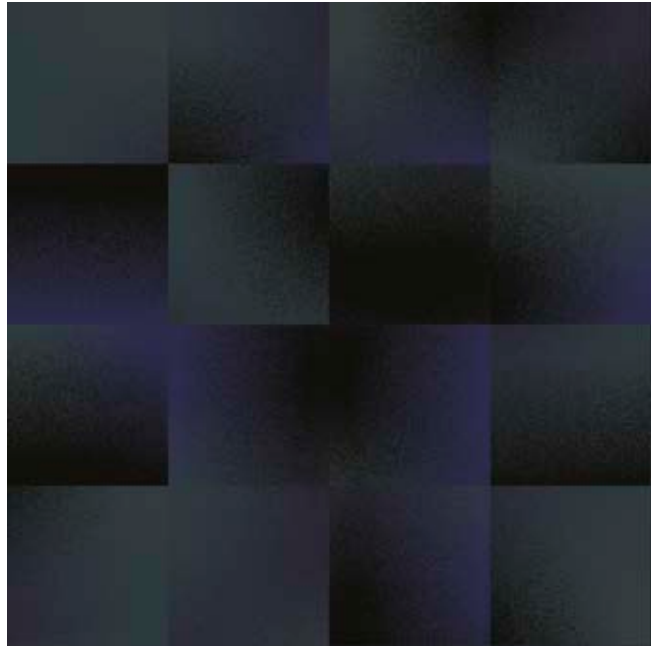


Background 1 Background 2 Background 3

C1	T1A	T1B	C2	T2A	T2B	C3	T3A	T3B
GB5	GB5	AC44	GB6	GB6	AC40	AC42	AC42	AC41

RFM52755114 Spotlight

4 x 4 tiles

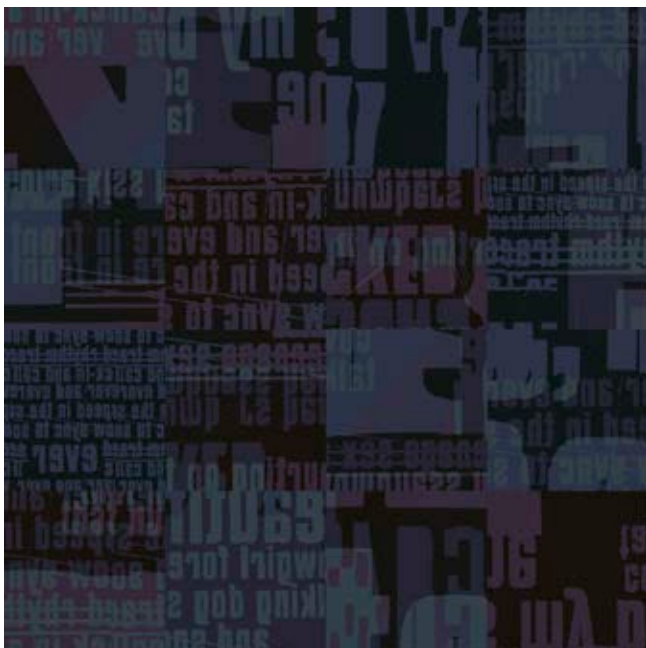


Colours

C1	T1	C2	C3	C4	C5	T5
AC46	AC46	GB5	AC40	AC44	GB6	GB6

RFM52755044 Double Dutch

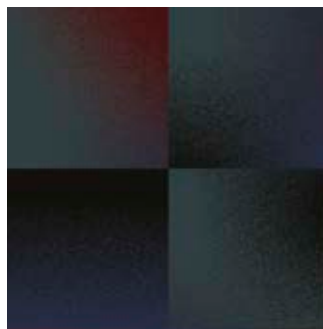
4 x 4 tiles



Background 1 Background 2 Letters 1 Letters 2 Solid Letters

C1	T1	C2	T2	C3	T3	C4	T4	C5	C6
GB5	AC40	GB5	AC29	GB6	AC46	GB6	AC29	AC46	AC40

RFM52755115 Spotlight 2 x 2 tiles



Colours

C1	T1	C2	C3	C4	C5	T5
AC46	AC46	GB5	AC40	AC29	GB6	GB6



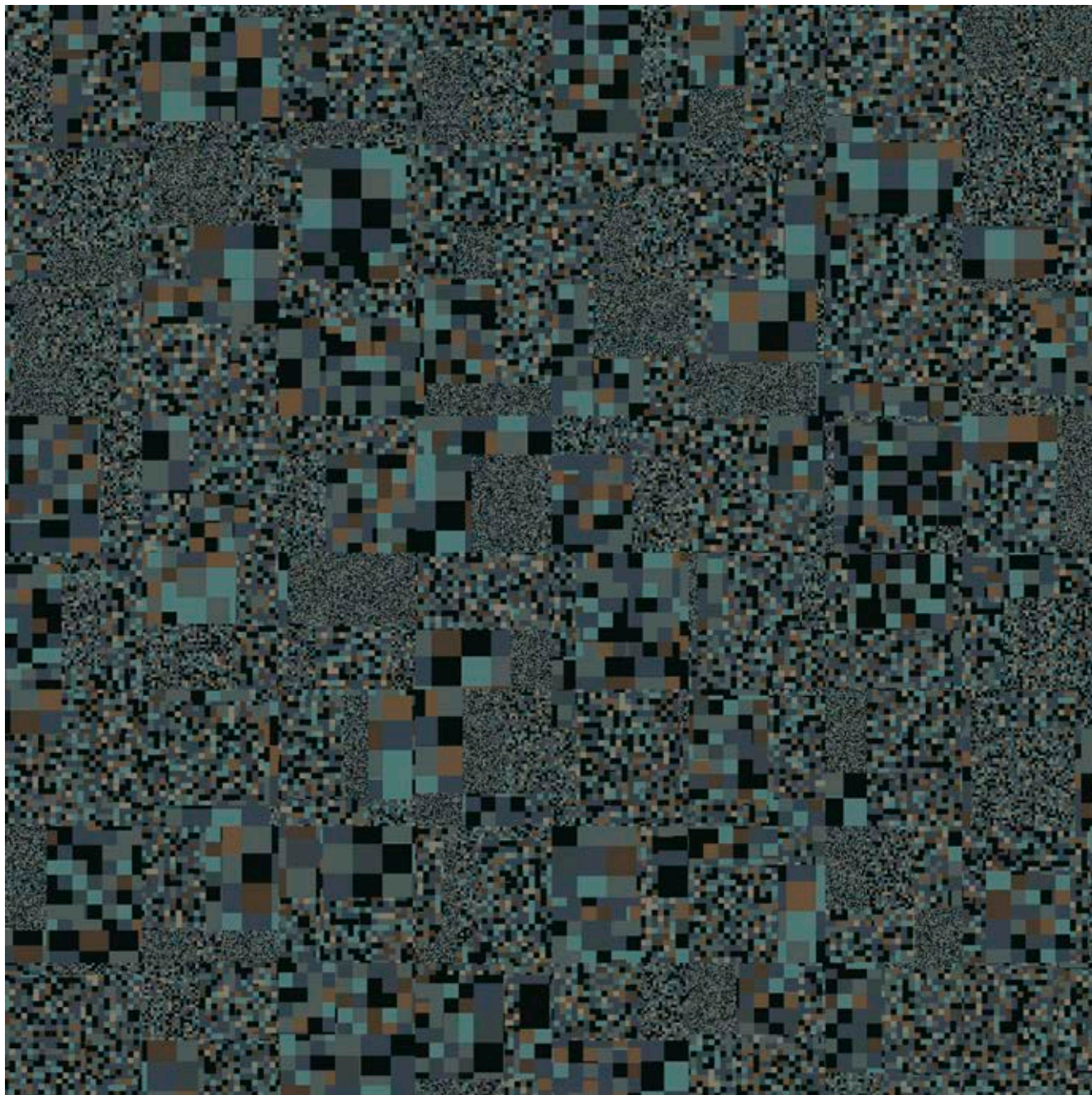
THE SKY REFLECTED in glass and steel



Turquoise colours mixed with browns as construction elements in shiny glass and steel meet with rough stone walls.

RFM52755083 Pixellations

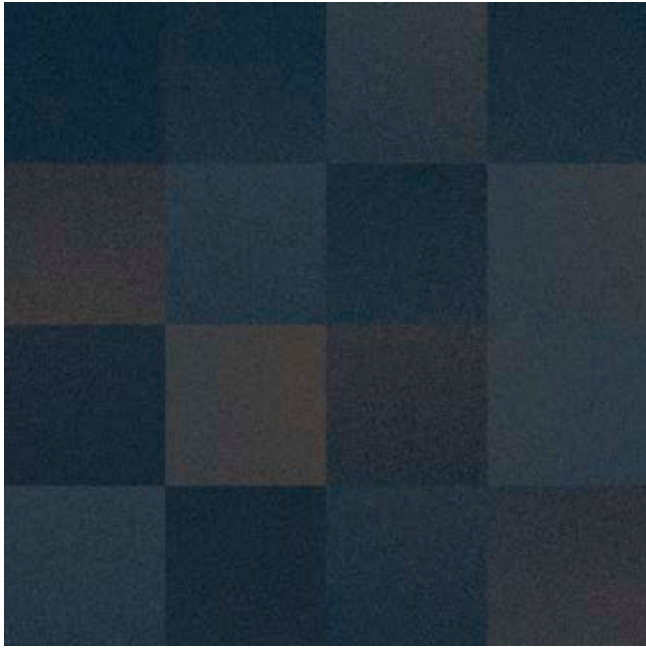
Installation example 8 x 8 tiles



Main Colours			Secondary Colours					Effect
C1	C2	C3	C4	C5	C6	C7	C8	C9
GB5	AC43	AC41	AC44	AC47	AC47	AC13	AC14	GB3

RFM52955063 Gradient

4 x 4 tiles



Background 1

C1	T1A	T1B
GB5	GB4	GB6

Background 2

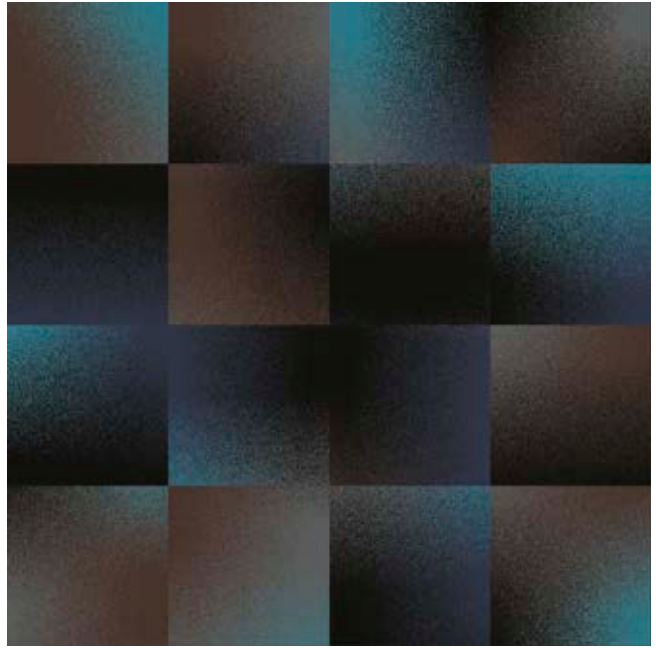
C2	T2A	T2B
GB6	AC43	AC46

Background 3

C3	T3A	T3B
AC40	AC39	AC39

RFM52755113 Spotlight

4 x 4 tiles



Colours

C1	T1	C2	C3	C4	C5	T5
GB4	AC15	GB5	AC43	GB7	AC41	AC41

RFM52755013 Aerial Map

4 x 4 tiles



Shadow

C1
GB5

Background 1

C2	C3	C4	C5
AC14	AC13	GB3	AC16

Background 2

C6	C7	C8	C9
AC44	AC41	AC43	AC47

Highlight

C10	Road	
None	C11	T11
	GB5	GB5

RFM52755122 Street Level

Installation example 8 x 4 tiles



Asphalt					Stone Effect		Metal Effect	
C1	C2	C3	C4	C5	C6	C7	C8	C9
GB5	AC45	AC30	AC13	GB3	AC46	AC13	AC46	AC43
[Color gradient bar]					[Color gradient bar]		[Color gradient bar]	

RFM52755143 Zig Zag

Installation example 8 x 4 tiles



Zig Zag		Background 1		Background 2	
C1	T1	C2	T2	C3	T3
GB4	AC45	GB5	AC44	AC43	GB3

RFM52755043 Double Dutch

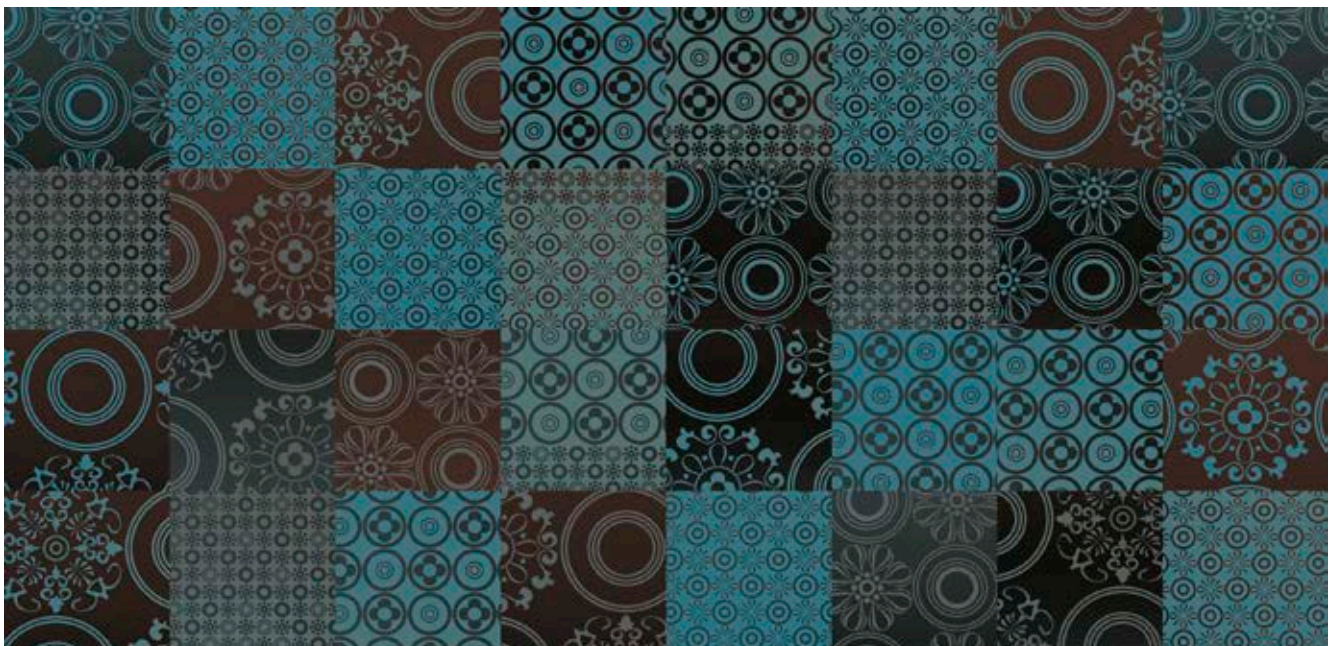
4 x 4 tiles



Background 1		Background 2		Letters 1		Letters 2		Solid Letters	
C1	T1	C2	T2	C3	T3	C4	T4	C5	C6
AC44	GB5	AC14	GB5	AC47	AC41	AC43	GB3	AC44	GB5

RFM52755103 Spanish Tiles

Installation example 8 x 4 tiles



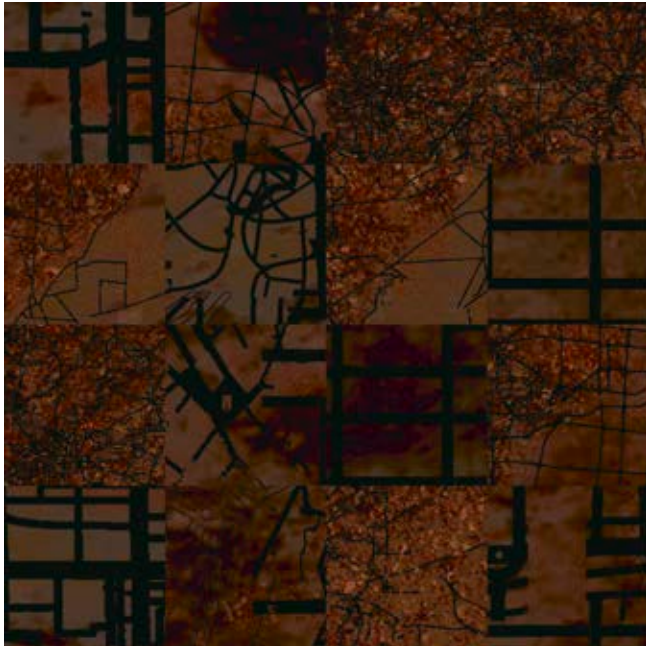
Background Large Flowers			Large Flowers			Background Small Flowers			Small Flowers			Recolour each section tone-on-tone
C1	C2	C3	C4	C5	C6	C7	C8	C9	C10	C11	C12	
AC44	GB5	GB4	GB7	AC47	AC43	GB7	AC47	AC43	AC44	GB5	GB4	



Cityscapes

RFM52755015 Aerial Map

4 x 4 tiles



Shadow C1 GB5	Background 1 C2 C3 C4 C5 BL4-5 AC29 AC28 AC24	Background 2 C6 C7 C8 C9 AC35 AC30 GB4 AC25
Highlight C10 AC24	Road C11 T11 GB5 GB5	

RFM52955145 Zig Zag

4 x 4 tiles



Zig Zag C1 T1 GB4 GB4	Background 1 C2 T2 AC17 GB3	Background 2 C3 T3 GB12 AC39
------------------------------------	--	---

RFM52955027 Construction

2 x 2 tiles



Background C1 T1 GB12 AC42	Lines C2 T2 AC40 GB3
---	-----------------------------------



RFM52955045 Double Dutch

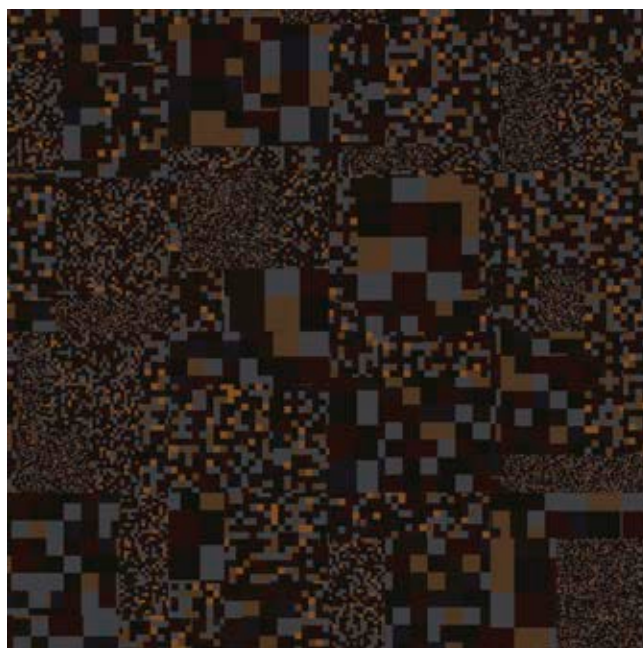
Installation example 8 x 4 tiles



Background 1	Background 2	Letters 1	Letters 2	Solid Letters
C1 AC40	C2 GB3	C3 GB3	C4 AC46	C5 AC40
T1 GB4	T2 GB12	T3 AC25	T4 AC38	C6 GB12

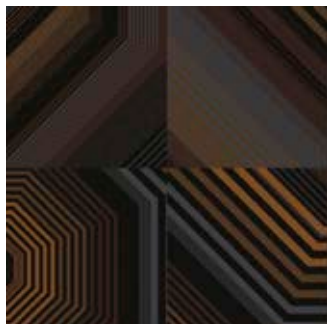
RFM52955085 Pixellations

4 x 4 tiles



Main Colours			Secondary Colours				Effect
C1 GB12	C2 GB4	C3 GB3	C4 AC47	C5 AC40	C6 AC40	C7 AC17	C8 AC47
							C9 AC39

RFM52955134 Subway 2 x 2 tiles



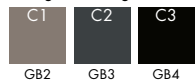
Colours				
C1 GB4	C2 AC39	C3 AC40	C4 AC42	C5 GB3

RFM52955105 Spanish Tiles

Installation example 8 x 8 tiles

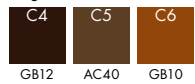


Background Large Flowers



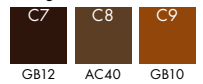
GB2 GB3 GB4

Large Flowers



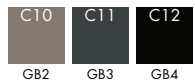
GB12 AC40 GB10

Background Small Flowers



GB12 AC40 GB10

Small Flowers

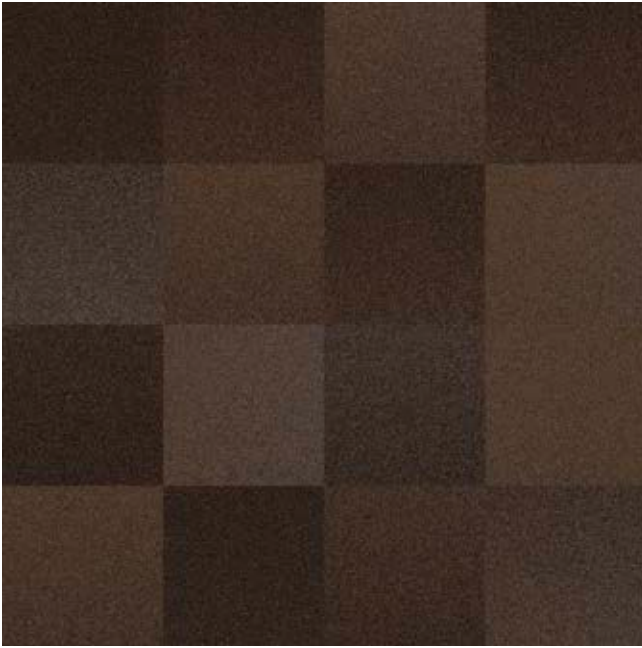


GB2 GB3 GB4

Recolour each section tone-on-tone

RFM52955065 Gradient

4 x 4 tiles



Background 1	Background 2	Background 3
C1	C2	C3
T1A T1B	T2A T2B	T3A T3B
GB4 AC40 GB12	AC40 GB3 AC39	GB3 GB2 GB2

RFM52755124 Street Level

4 x 4 tiles

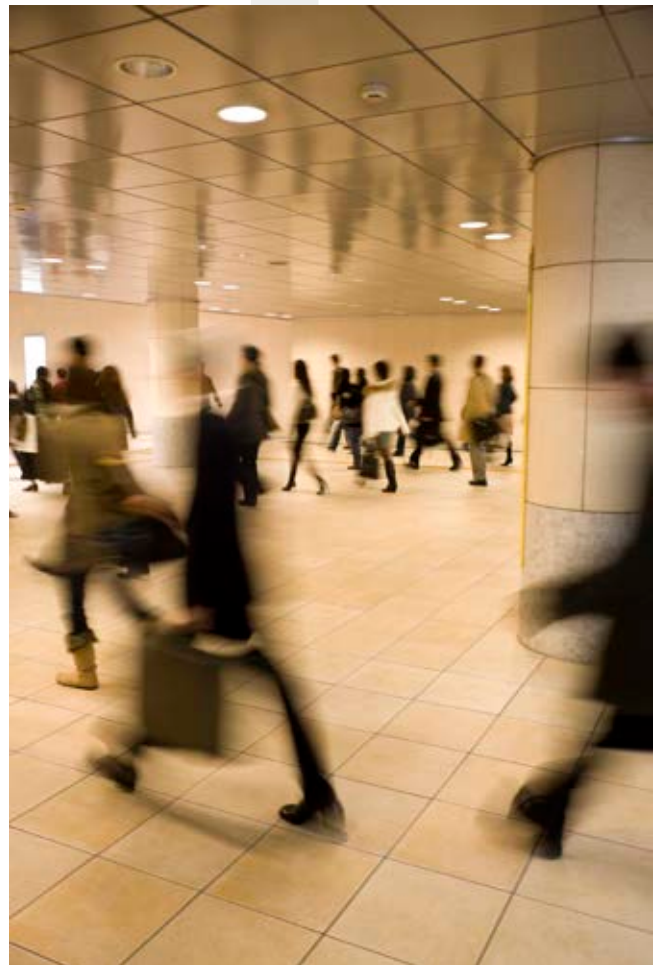


Asphalt	Stone Effect	Metal Effect
C1	C6	C8
C2	C7	C9
C3		
C4		
C5		
GB5 AC45 AC30 AC25 AC16	AC13 AC26	AC13 AC26



LIGHT AND SHADOW between city walls

Warm and cool combinations of grey, beige and brown shades, created by sunlight playing between city walls.



RFM52955017 Aerial Map

Installation example 8 x 8 tiles



Shadow	Background 1	Background 2	Highlight	Road
C1	C2 C3 C4 C5	C6 C7 C8 C9	C10	C11 T11
AC40	AC39 AC25 GB9 AC23	GB3 AC16 GB2 AC13	None	GB1 GB1

Cityscapes

RFM52955146 Zig Zag

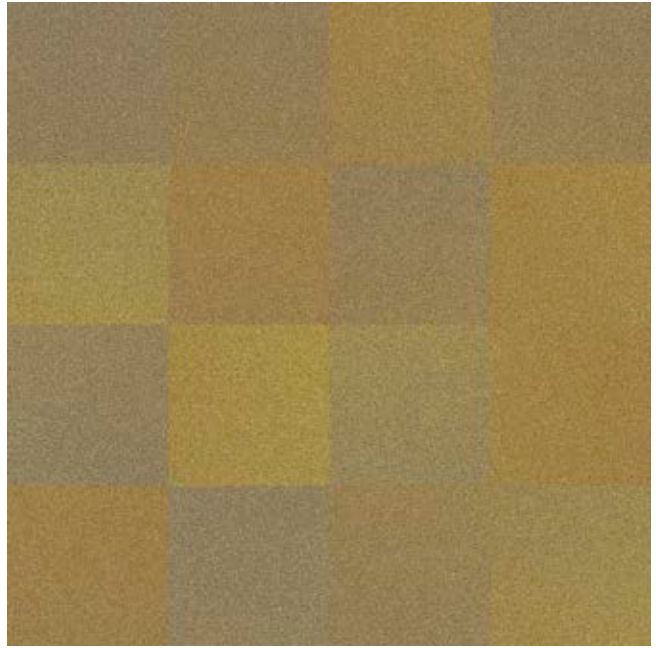
4 x 4 tiles



Zig Zag	Background 1	Background 2
C1 T1	C2 T2	C3 T3
GB1 AC13	GB2 AC39	GB9 AC13

RFM52755068 Gradient

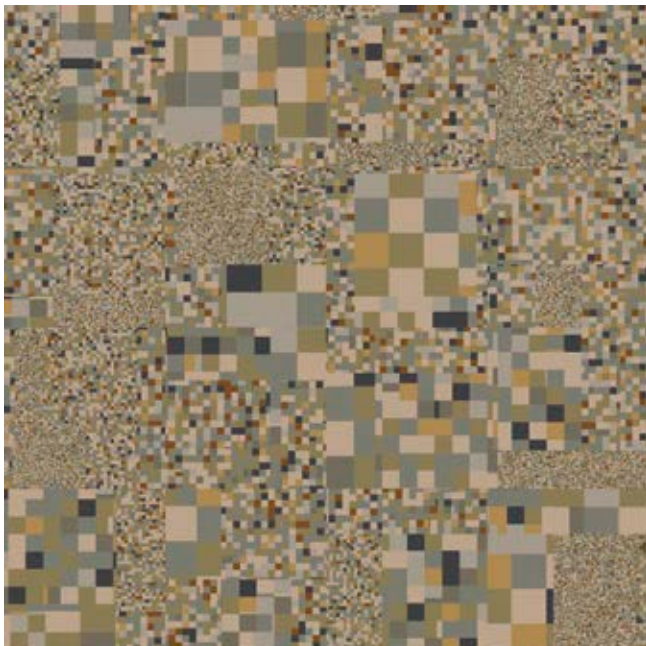
4 x 4 tiles



Background 1	Background 2	Background 3
C1 T1A T1B	C2 T2A T2B	C3 T3A T3B
GB3 AC13 GB2	AC26 AC26 GB2	AC22 AC22 GB1

RFM52955087 Pixellations

4 x 4 tiles



Main Colours	Secondary Colours	Effect
C1 C2 C3	C4 C5 C6 C7 C8	C9
GB1 GB2 AC25	AC13 GB9 AC13 AC15 GB3	AC39



RFM52955047 Double Dutch

Installation example 8 x 8 tiles



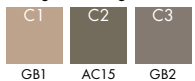
Background 1	Background 2	Letters 1	Letters 2	Solid Letters
C1 GB2	C2 GB2	C3 GB9	C4 GB1	C5 GB1
T1 GB3	T2 AC39	T3 AC13	T4 GB2	C6 AC13

RFM52955107 Spanish Tiles

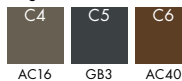
Installation example 8 x 4 tiles



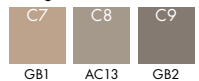
Background Large Flowers



Large Flowers



Background Small Flowers



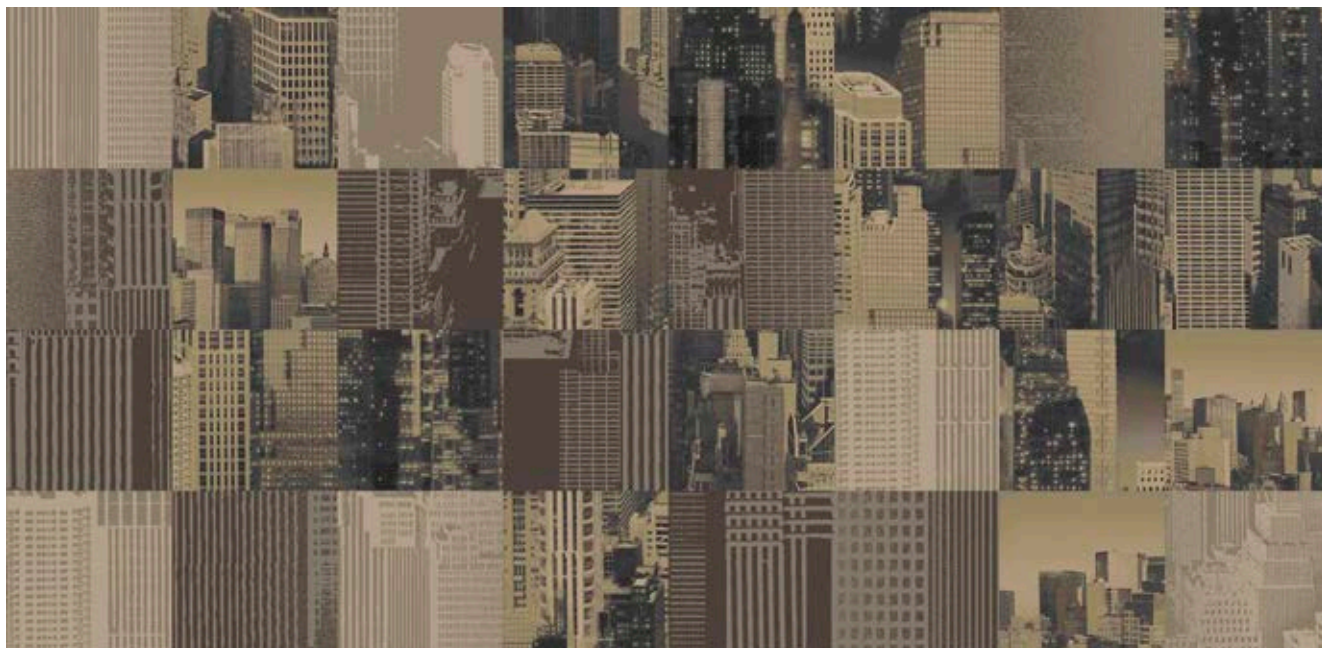
Small Flowers



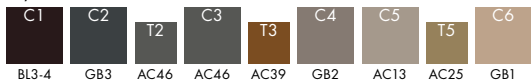
Recolour each section tone-on-tone

RFM52955092 Skylines

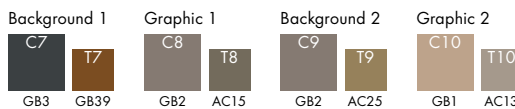
Installation example 8 x 4 tiles



Skyline Photos



Two-tone graphics:







RFM52955147 Zig Zag

4 x 4 tiles



Zig Zag	Background 1	Background 2
C1	C2	C3
T1	T2	T3
GB3	AC27	GB2
AC15	GB2	GB1

RFM52755069 Gradient

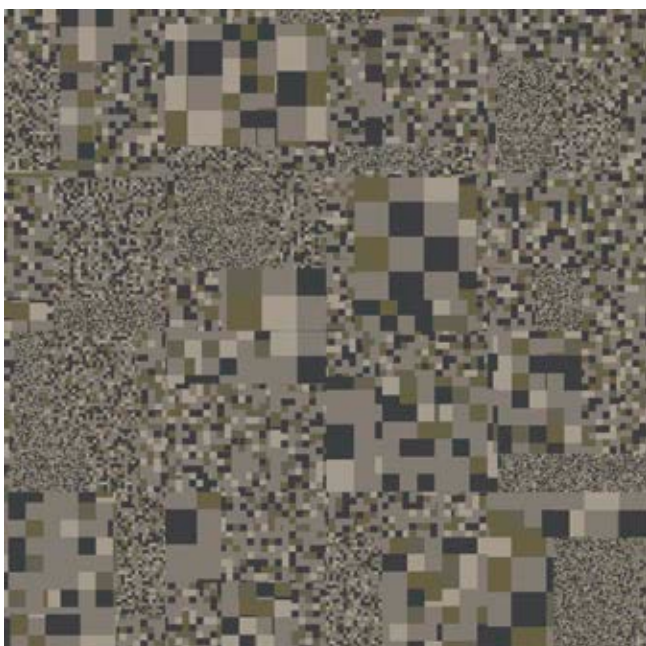
4 x 4 tiles



Background 1	Background 2	Background 3
C1	C2	C3
T1A	T2A	T3A
T1B	T2B	T3B
GB3	AC21	GB1
AC15	AC21	GB1
AC14	GB1	GB1

RFM52955088 Pixellations

4 x 4 tiles

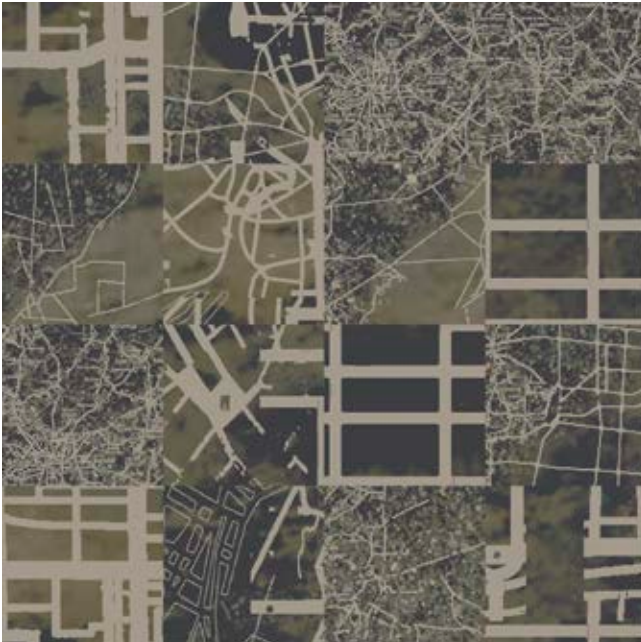


Main Colours				
C1	C2	C3		
GB3	GB2	GB2		
Secondary Colours				
C4	C5	C6	C7	C8
AC27	AC27	AC13	AC13	AC16
Effect				
C9				
AC16				



RFM52955018 Aerial Map

4 x 4 tiles



Shadow	Background 1	Background 2
C1	C2 C3 C4 C5	C6 C7 C8 C9
GB3	GB3 GB3 AC46 GB2	GB3 GB3 AC27 GB2
Highlight	Road	
C10	C11 T11	
GB1	AC13 AC13	

RFM52955136 Subway

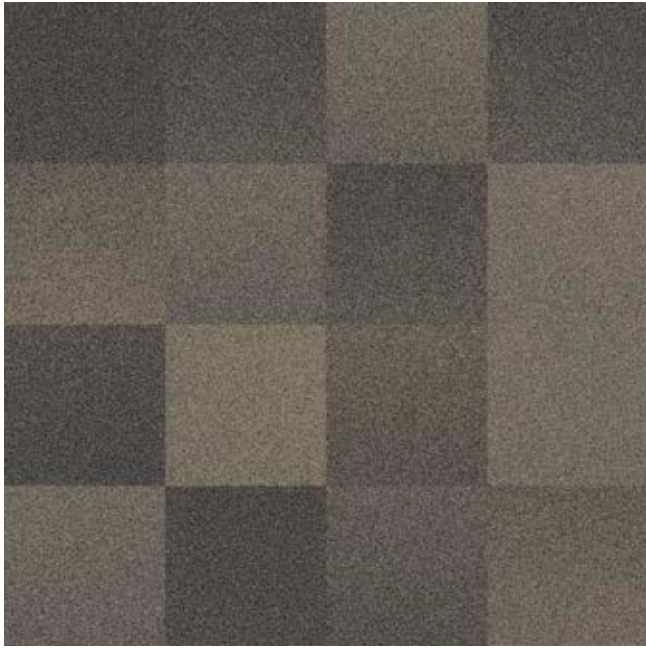
4 x 4 tiles



Colours
C1 C2 C3 C4 C5 C6
GB2 AC13 GB1 AC15 BL2-3 AC25

RFM52955067 Gradient

4 x 4 tiles



Background 1	Background 2	Background 3
C1 T1A T1B	C2 T2A T2B	C3 T3A T3B
GB3 GB4 GB2	GB2 GB3 GB1	AC25 GB1 GB1

RFM52955066 Gradient

4 x 4 tiles



Background 1	Background 2	Background 3
C1 T1A T1B	C2 T2A T2B	C3 T3A T3B
GB4 GB3 AC17	GB3 GB2 GB1	AC26 AC25 AC25

RFM52955126 Street Level

Installation example 8 x 4 tiles



Asphalt	Stone Effect	Metal Effect
C1 C2 C3 C4 C5	C6 C7	C8 C9
GB3 GB2 AC13 GB1 GB1	AC13 GB1	AC13 GB1



RFM52955048 Double Dutch

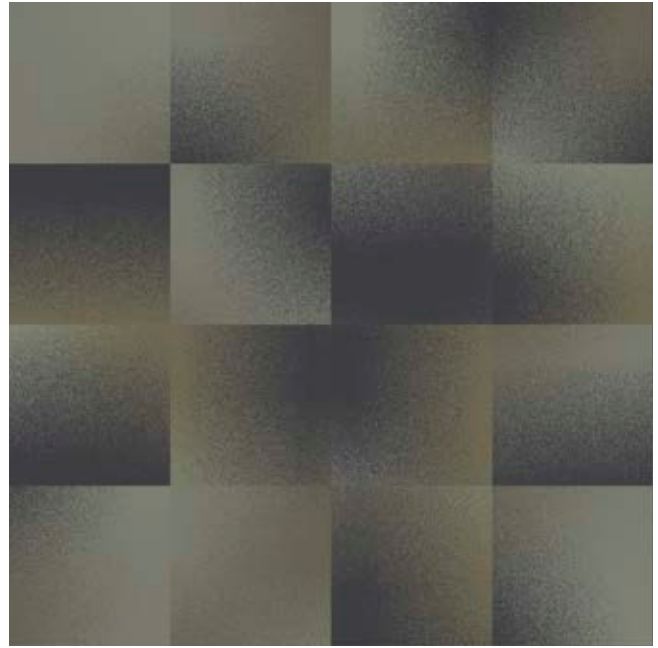
4 x 4 tiles



Background 1		Background 2		Letters 1		Letters 2		Solid Letters	
C1	T1	C2	T2	C3	T3	C4	T4	C5	C6
GB2	AC13	AC13	GB1	AC46	GB2	AC15	GB2	GB2	GB1

RFM52955116 Spotlight

4 x 4 tiles



Colours						
C1	T1	C2	C3	C4	C5	T5
GB2	GB2	GB3	AC16	AC13	AC27	GB2

RFM52955030 Construction

4 x 4 tiles



Background		Lines	
C1	T1	C2	T2
GB3	AC16	AC13	GB2

RFM52955029 Construction

2 x 2 tiles



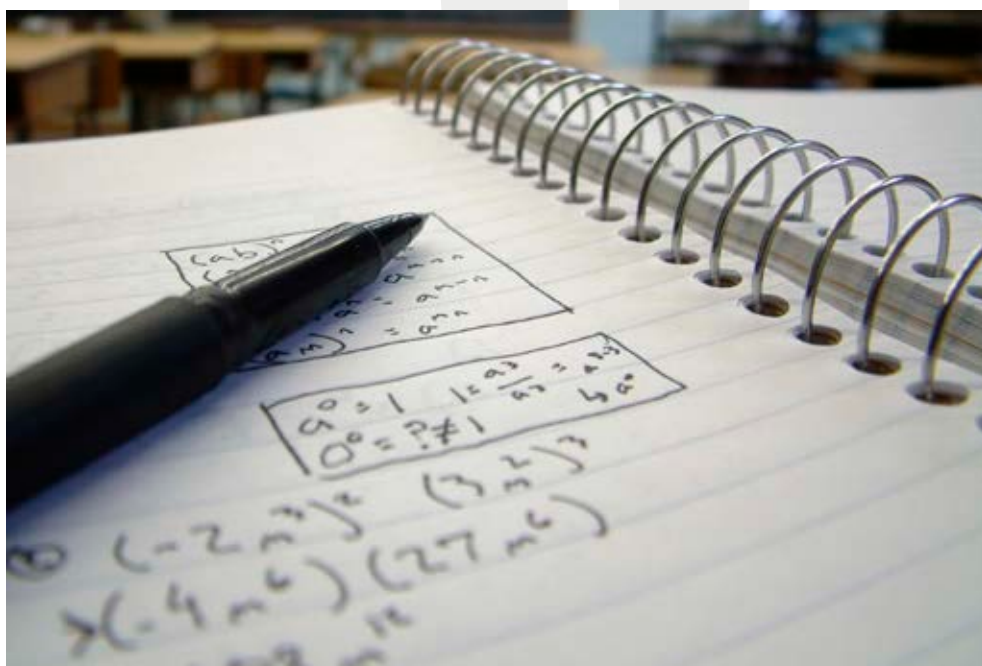
Background		Lines	
C1	T1	C2	T2
GB2	AC13	GB1	GB1

RFM52955046 Double Dutch

Installation example 8 x 4 tiles



Background 1	Background 2	Letters 1	Letters 2	Solid Letters
C1 T1	C2 T2	C3 T3	C4 T4	C5 C6
AC46 GB2	AC15 GB3	GB4 GB3	AC46 AC40	GB4 GB3

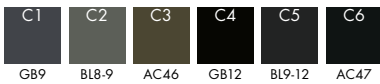


RFM52205135 Subway

4 x 4 tiles

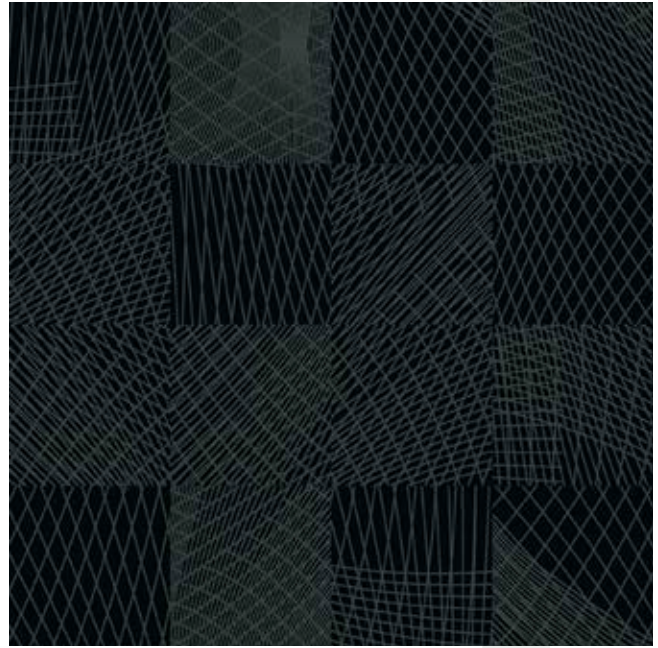


Colours



RFM52205028 Construction

4 x 4 tiles



Background

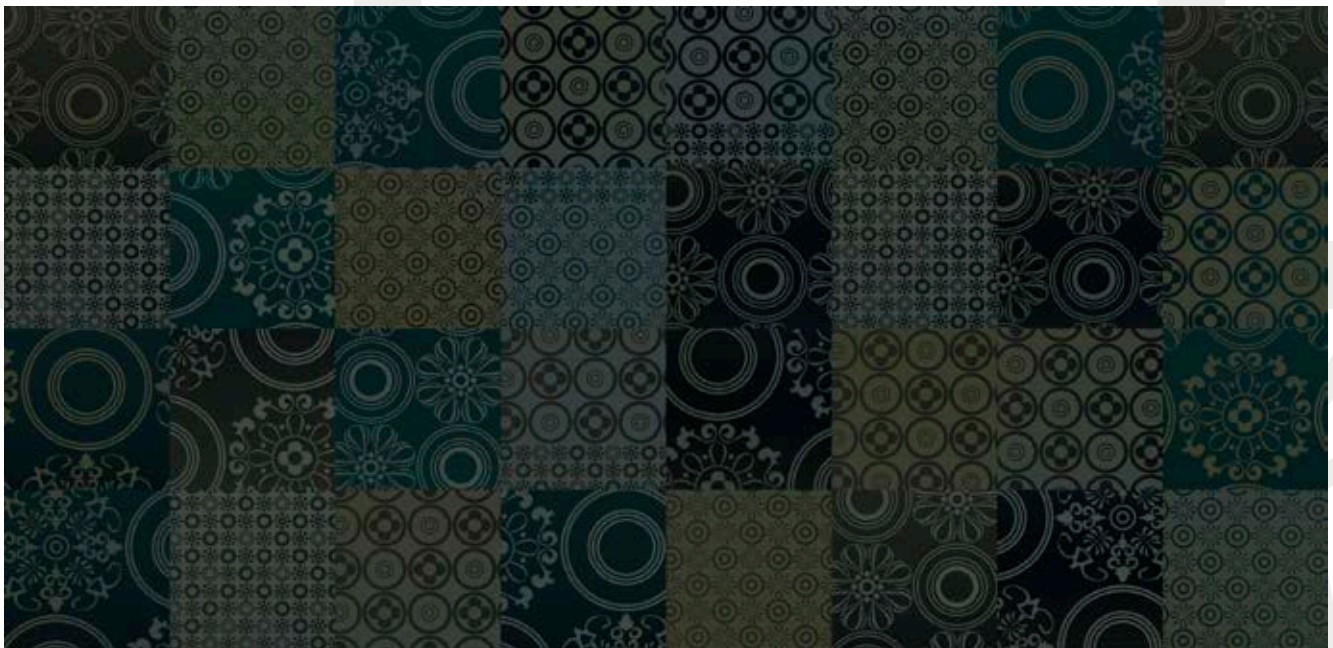


Lines



RFM52205106 Spanish Tiles

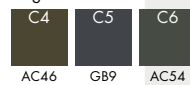
4 x 4 tiles



Background Large Flowers



Large Flowers



Background Small Flowers



Small Flowers



Recolour each section tone-on-tone

RFM52205016 Aerial Map

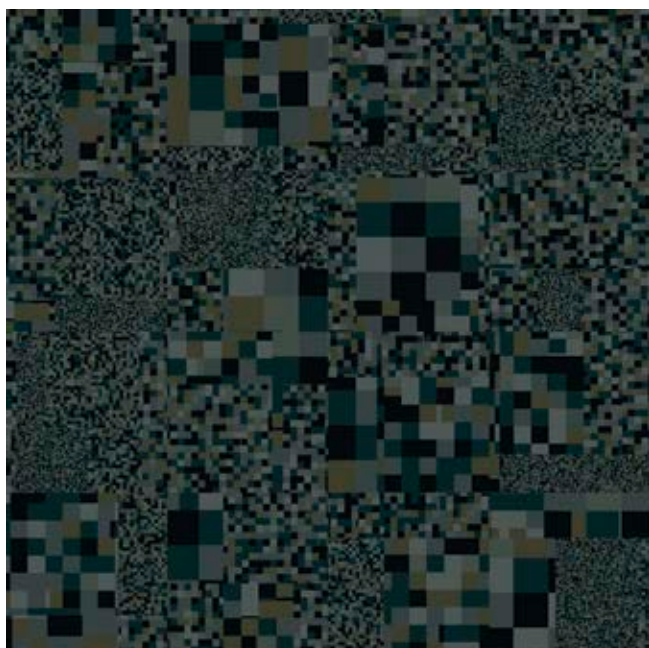
Installation example 8 x 4 tiles



Shadow	Background 1	Background 2	Highlight	Road
C1	C2 C3 C4 C5	C6 C7 C8 C9	C10	C11 T11
GB12	GB12 AC77 AC46 AC44	GB12 GB9 AC54 GB8	GB8	GB8 GB8

RFM52205086 Pixellations

4 x 4 tiles



Main Colours	Secondary Colours	Effect
C1 C2 C3	C4 C5 C6 C7 C8	C9
GB12 AC77 GB9	AC46 BL8-9 AC54 AC46 BL8-9	AC54

RFM52205125 Street Level

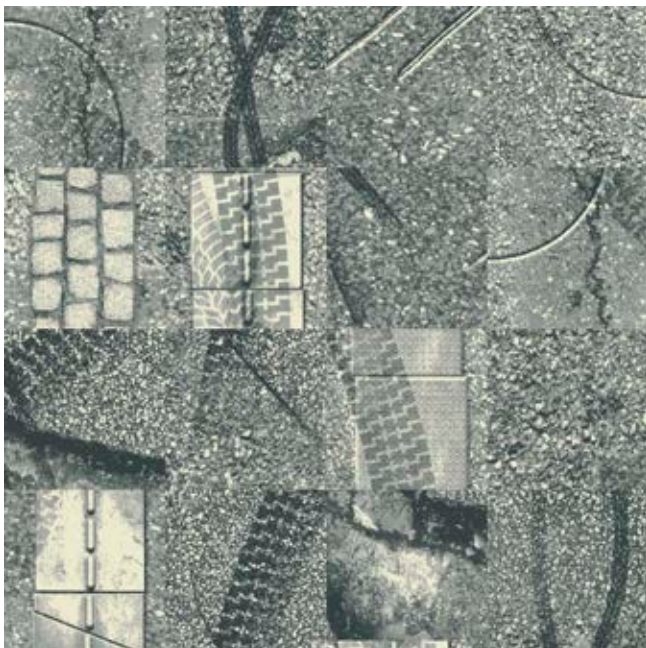
Installation example 8 x 4 tiles



Asphalt					Stone Effect		Metal Effect	
C1	C2	C3	C4	C5	C6	C7	C8	C9
AC77	AC46	AC44	GB8	AC53	BL2-8-9	GB8	BL2-8-9	GB8

RFM52205127 Street Level

4 x 4 tiles

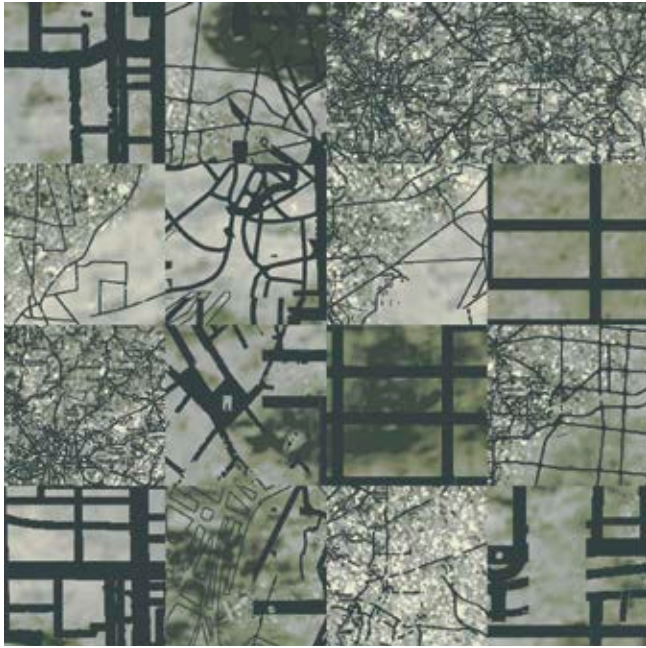


Asphalt					Stone Effect		Metal Effect	
C1	C2	C3	C4	C5	C6	C7	C8	C9
GB9	GB8	AC53	GB1	GB1	AC53	GB1	AC53	GB1



RFM52205019 Aerial Map

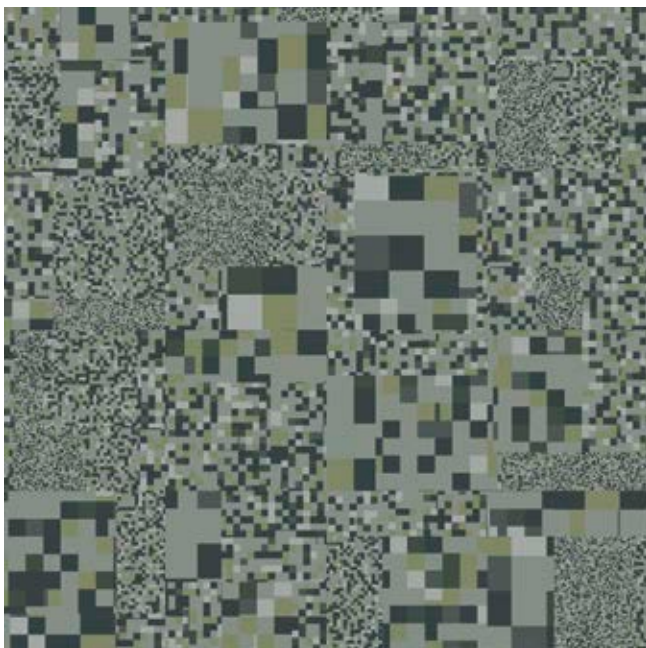
4 x 4 tiles



Shadow	Background 1				Background 2			
C1	C2	C3	C4	C5	C6	C7	C8	C9
AC54	AC54	GB8	AC53	GB1	AC54	AC55	AC53	GB1
	[Color gradient bar]				[Color gradient bar]			
Highlight	Road							
C10	C11	T11						
GB1	GB9	GB9						

RFM52205089 Pixellations

4 x 4 tiles



Main Colours			Secondary Colours				Effect	
C1	C2	C3	C4	C5	C6	C7	C8	C9
GB8	GB8	GB9	AC53	BL8-9	AC55	AC55	AC54	AC53

RFM52205148 Zig Zag

4 x 4 tiles



Zig Zag		Background 1		Background 2	
C1	T1	C2	T2	C3	T3
GB9	BL8-9	BL8-9	AC55	GB8	AC53



RFM52205137 Subway

4 x 4 tiles



Colours



RFM52755149 Zig Zag

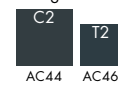
4 x 4 tiles



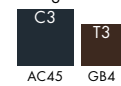
Zig Zag



Background 1

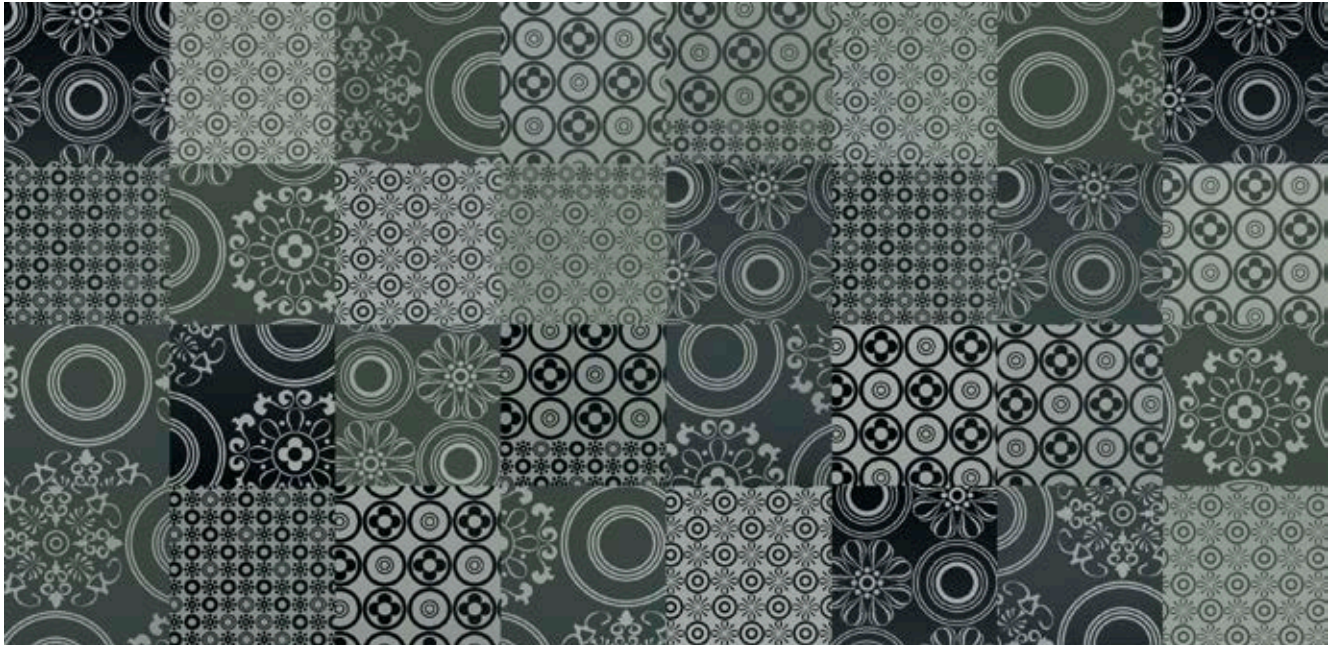


Background 2



RFM52205108 Spanish Tiles

Installation example 8 x 4 tiles



Background Large Flowers			Large Flowers			Background Small Flowers			Small Flowers			
C1	C2	C3	C4	C5	C6	C7	C8	C9	C10	C11	C12	
GB12	GB9	AC54	AC53	GB8	AC53	AC53	GB8	GB8	GB12	GB9	AC54	Recolour each section tone-on-tone

RFM52205093 Skylines

4 x 4 tiles



Skyline Photos										
C1	C2	T2	C3	T3	C4	C5	T5	C6		
BL9-12	GB9	GB9	BL8-9	GB8	GB8	AC53	GB8	GB1		

Two-tone graphics:

Background 1		Graphic 1		Background 2		Graphic 2	
C7	T7	C8	T8	C9	T9	C10	T10
GB9	BL9-12	BL8-9	GB8	GB9	GB8	GB8	GB8



RFM52205050 Double Dutch

4 x 4 tiles



Background 1		Background 2		Letters 1		Letters 2		Solid Letters	
C1	T1	C2	T2	C3	T3	C4	T4	C5	C6
GB8	GB1	GB1	GB8	BL8-9	GB8	GB8	AC53	GB9	GB8

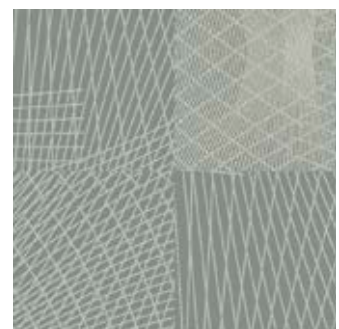
RFM52205049 Double Dutch

4 x 4 tiles



Background 1		Background 2		Letters 1		Letters 2		Solid Letters	
C1	T1	C2	T2	C3	T3	C4	T4	C5	C6
GB12	AC46	GB9	AC46	GB9	AC44	GB8	BL8-9	GB8	BL9-12

RFM52205033 Construction



Background		Lines	
C1	T1	C2	T2
GB8	GB8	AC53	GB1

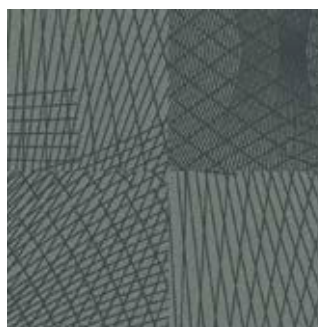
RFM52755031 Construction

4 x 4 tiles



Background		Lines	
C1	T1	C2	T2
GB5	AC41	AC43	GB3

RFM52205032 Construction 2 x 2 tiles

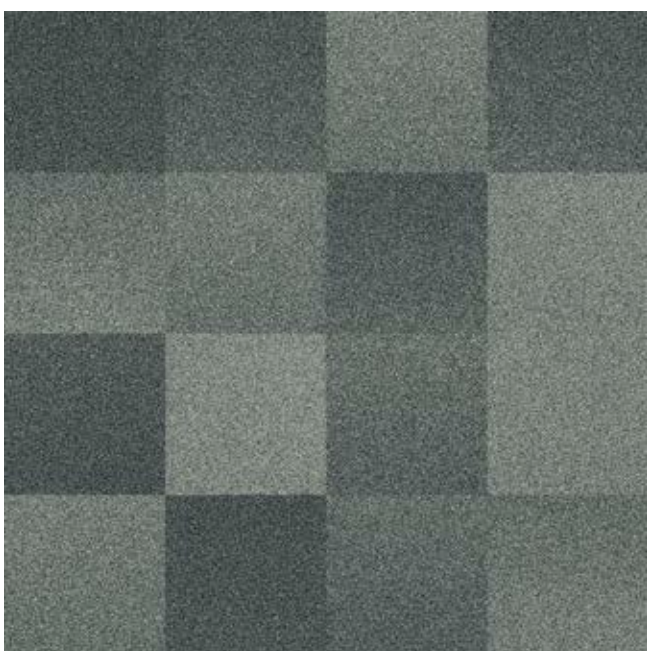


Background		Lines	
C1	T1	C2	T2
GB8	BL8-9	GB9	BL8-9



RFM52205070 Gradient

4 x 4 tiles



Background 1



GB9 GB12 GB8

Background 2



GB8 GB9 GB1

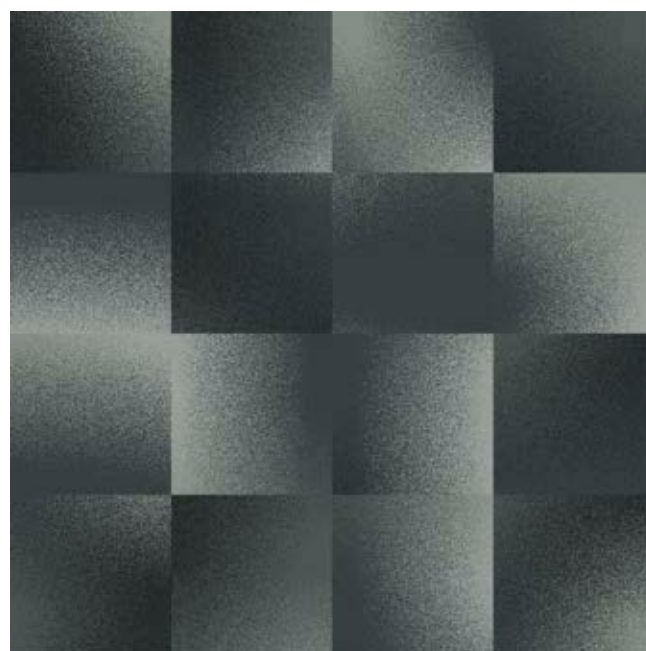
Background 3



GB8 GB1 GB1

RFM52205117 Spotlight

4 x 4 tiles



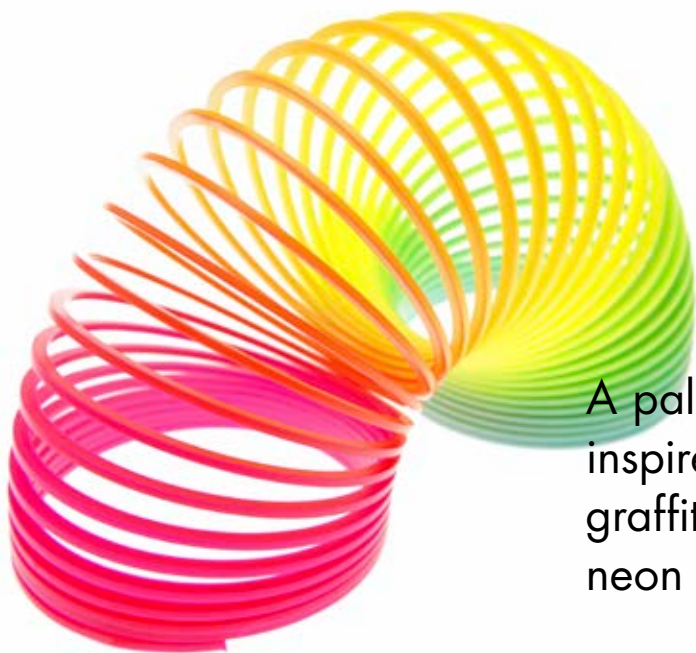
Colours



GB9 BL9-12 GB9 BL8-9 GB8 AC53 GB8

ALMOST NEON

A story of vibrant acidic colours to spice up the collection and to inspire you to venture into the world of exaggerated and unique colour expressions.



A palette of 12 special colours* inspired by urban street style, graffiti, plastic gadgets and flashing neon signs.

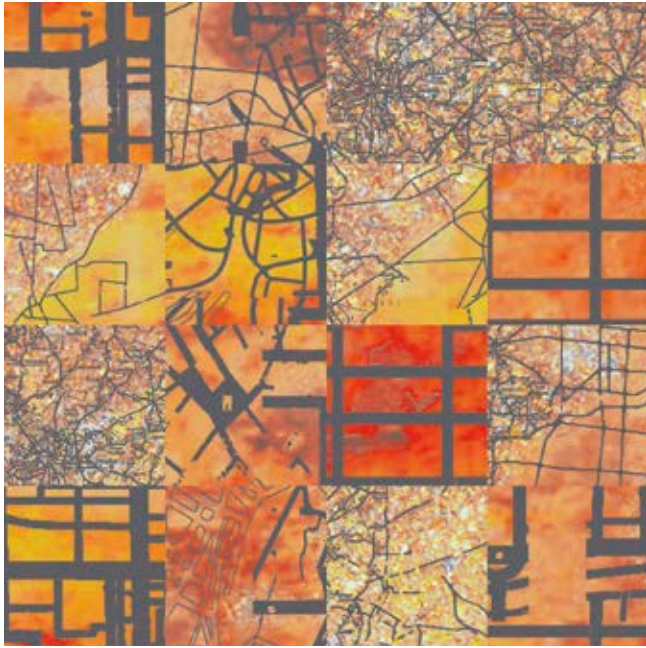
*Standard designs shown in special palette 5269, see page 96.

Quantities, delivery times and prices follow the standard guidelines for special colours in Highline Express.



ES40001-51 Aerial Map

4 x 4 tiles



Shadow C1 GB4	Background 1 C2 C3 C4 C5 BL4-8 GB8 BL8-12 GB12	Background 2 C6 C7 C8 C9 GB2 GB6 GB10 GB11
Highlight C10 GB12	Road C11 T11 GB4 GB4	

ES40009-52 Skylines

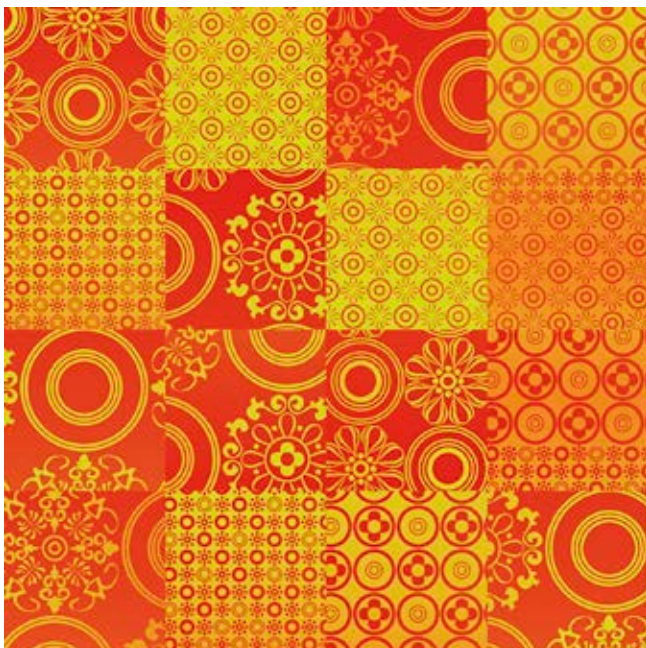
4 x 4 tiles



Skylines Photos C1 C2 T2 C3 T3 C4 C5 T5 C6 BL2-4 GB2 GB2 BL2-10 GB6 BL6-10 GB10 BL10-11 GB11	Two-tone graphics:
Background 1 C7 T7 GB6 BL2-10	Graphic 1 C8 T8 GB10 BL10-11
Background 2 C9 T9 GB2 GB2	Graphic 2 C10 T10 GB10 BL10-11

ES40010-53 Spanish Tiles

4 x 4 tiles



Background Large Flowers C1 C2 C3 GB2 GB6 GB2	Large Flowers C4 C5 C6 GB11 GB10 GB11	Background Small Flowers C7 C8 C9 GB11 GB10 GB11	Small Flowers C10 C11 C12 GB2 GB6 GB2
--	--	---	--

Recolour each section tone-on-tone

ES40004-55 Double Dutch

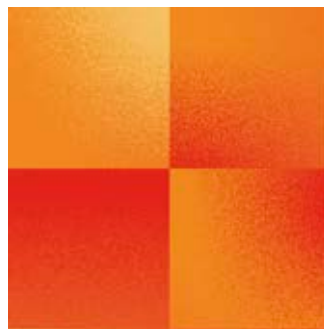
4 x 4 tiles



Background 1		Background 2		Letters 1		Letters 2		Solid Letters	
C1	T1	C2	T2	C3	T3	C4	T4	C5	C6
GB6	GB2	BL4-8	GB8	GB10	GB6	GB8	GB11	GB6	GB2

VIBRANT
ENERGETIC

ES40011-54 Spotlight 2 x 2 tiles



Colours						
C1	T1	C2	C3	C4	C5	T5
GB10	GB10	GB2	BL6-10	BL10-12	GB6	BL2-6

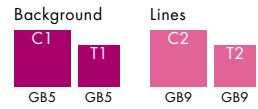
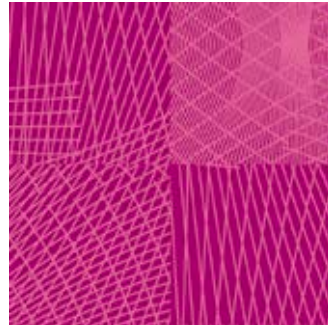
ES40013-56 Subway

4 x 4 tiles



Colours						
C1	C2	C3	C4	C5	C6	C7
GB2	GB6	BL6-10	BL2-6	GB10	BL10-11	GB10

ES40002-62 Construction 2 x 2 tiles

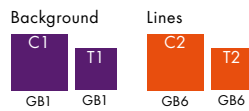


ES40004-61 Double Dutch

4 x 4 tiles

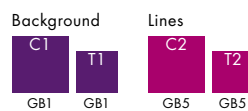


ES40002-63 Construction



ES40002-64 Construction

4 x 4 tiles



ES40012-65 Street Level

4 x 4 tiles



Asphalt					Stone Effect		Metal Effect	
C1	C2	C3	C4	C5	C6	C7	C8	C9
BL1-4	GB1	GB5	BL5-12	BL9-12	BL5-12	BL9-12	BL5-12	BL9-12

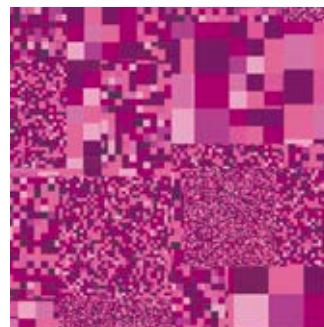
ES40014-66 Zig Zag

4 x 4 tiles



Zig Zag		Background 1		Background 2	
C1	T1	C2	T2	C3	T3
GB1	GB5	GB5	GB9	BL9-12	BL8-12

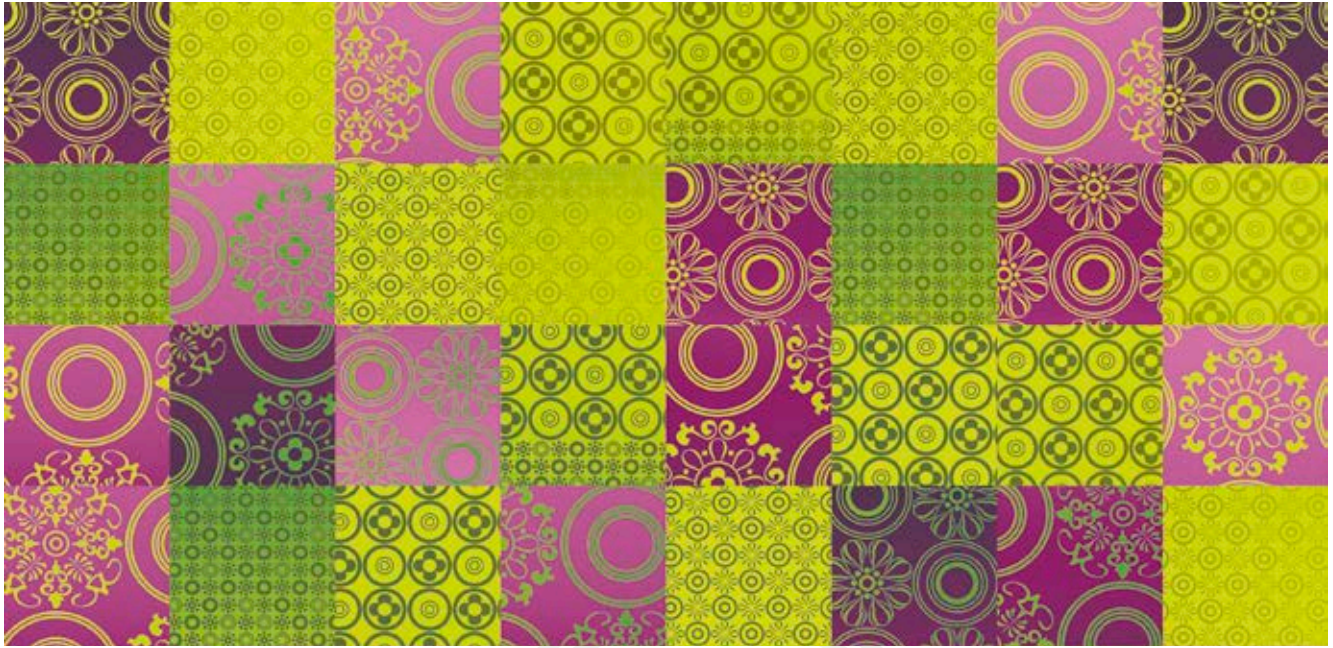
ES40008-67 Pixellations 2 x 2 tiles



Main Colours			Secondary Colours				Effect	
C1	C2	C3	C4	C5	C6	C7	C8	C9
GB1	GB5	GB9	BL9-12	BL5-12	BL1-12	BL8-9	BL4-5	BL1-4

ES40010-71 Spanish Tiles

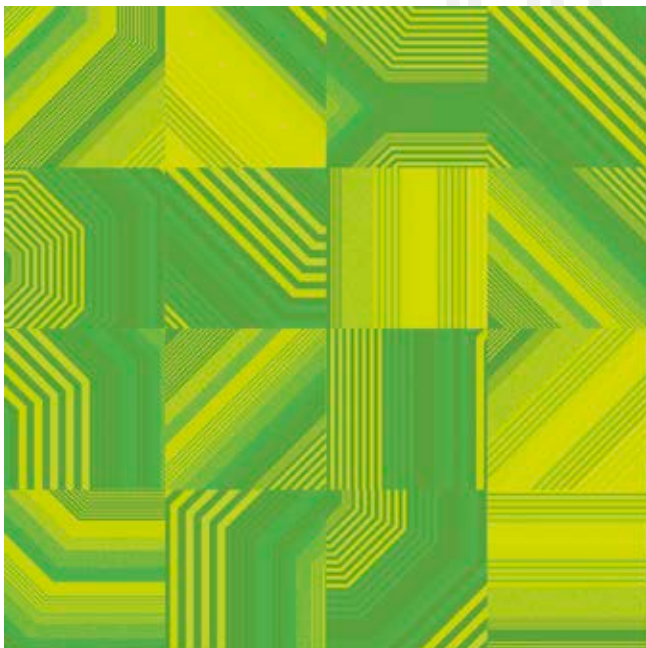
Installation example 8 x 4 tiles



Background Large Flowers	Large Flowers	Background Small Flowers	Small Flowers	
C1 C2 C3	C4 C5 C6	C7 C8 C9	C10 C11 C12	Recolour each section tone-on-tone
BL1-4 BL4-5 BL8-9	GB11 GB7 GB3	GB11 GB7 GB3	BL3-4 BL4-7 BL8-11	

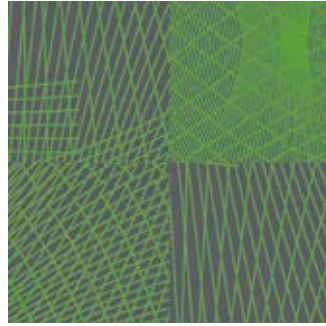
ES40013-72 Subway

4 x 4 tiles



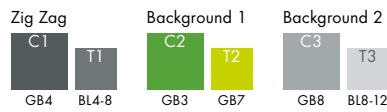
Colours				
C1	C2	C3	C4	C5
GB3	GB7	BL7-11	BL3-7	GB11

ES40002-73 Construction 2 x 2 tiles



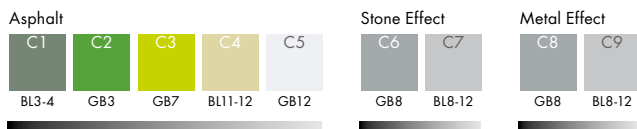
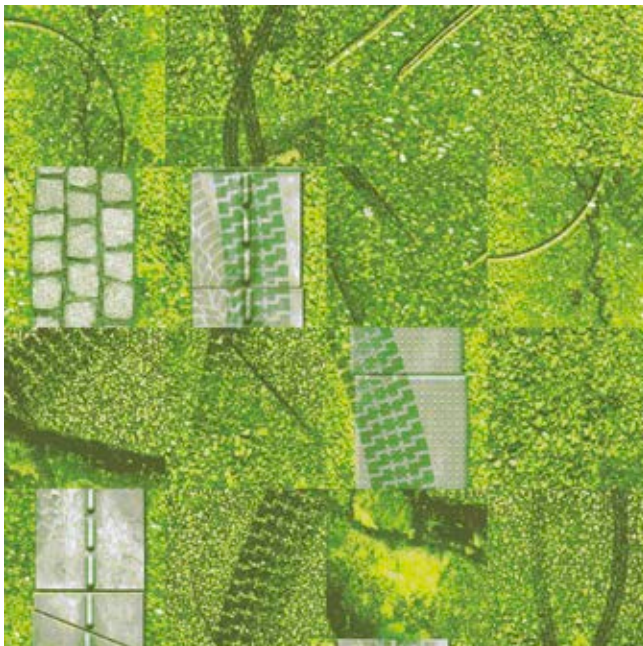
ES40014-74 Zig Zag 4 x 4 tiles

4 x 4 tiles



ES40012-75 Street Level 4 x 4 tiles

4 x 4 tiles

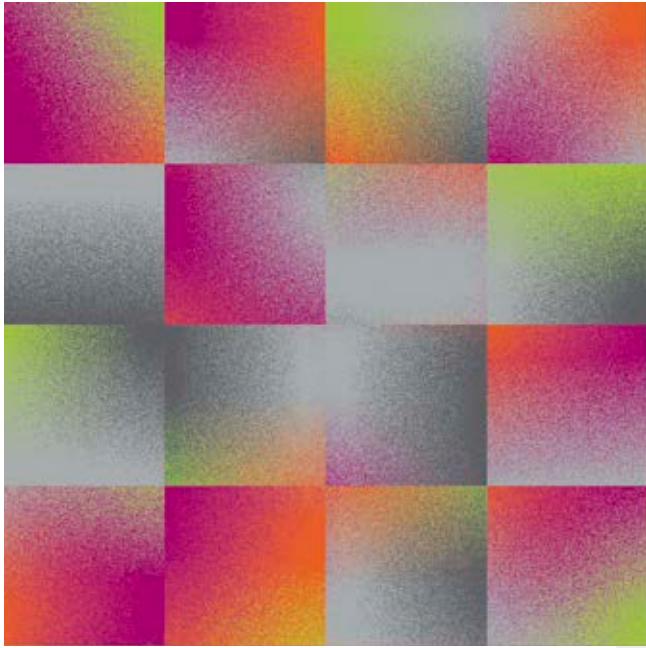


ES40002-76 Construction 2 x 2 tiles



ES40011-81 Spotlight

4 x 4 tiles



Colours



URBAN
LIFESTYLE

ES40013-82 Subway

4 x 4 tiles

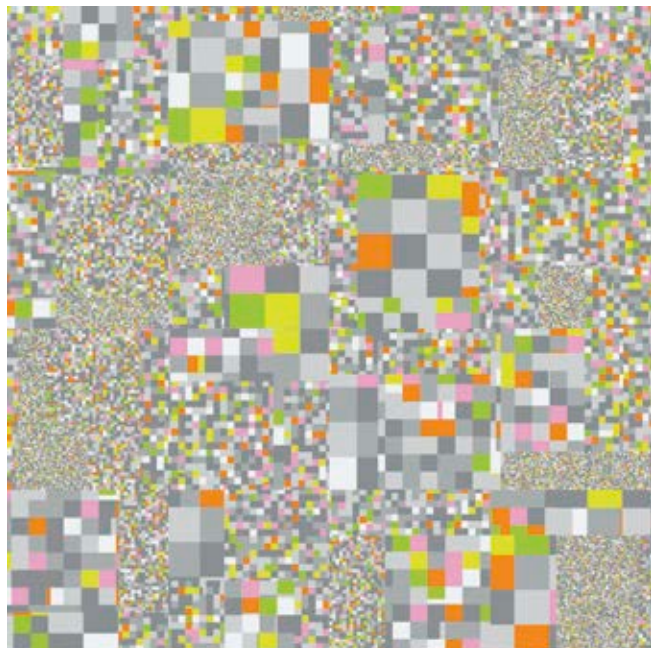


Colours



ES40008-83 Pixellations

4 x 4 tiles

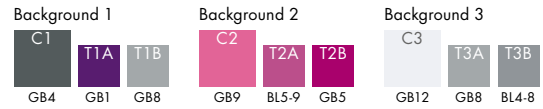
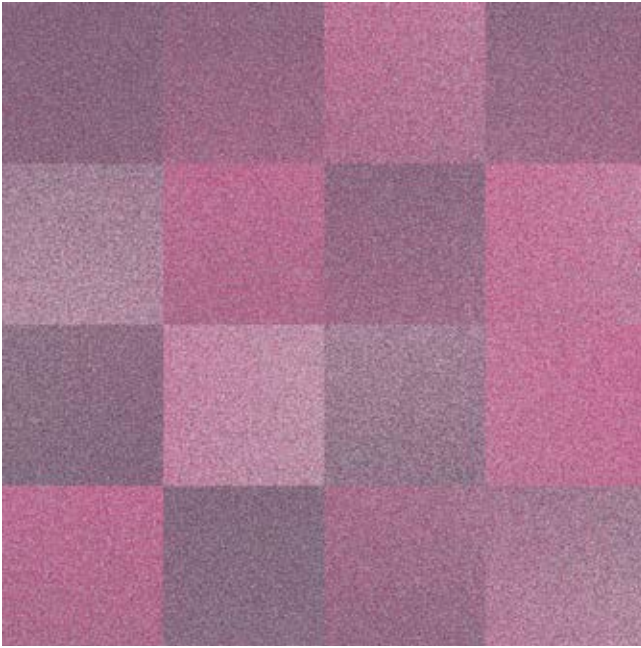


Main Colours

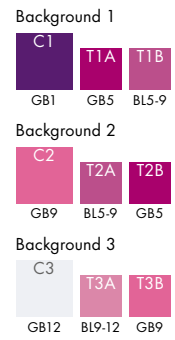
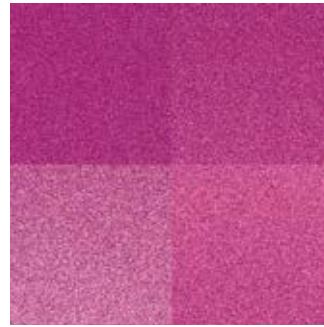


ES40006-84 Gradient

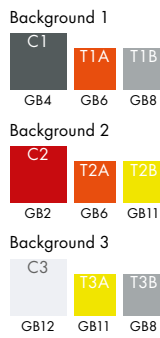
4 x 4 tiles



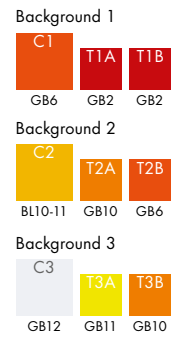
ES40006-85 Gradient



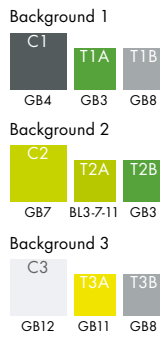
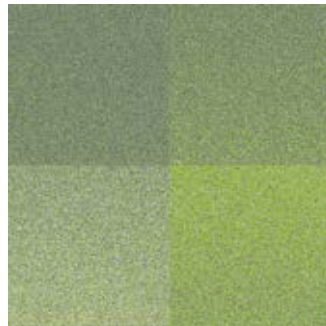
ES40006-86 Gradient



ES40006-87 Gradient



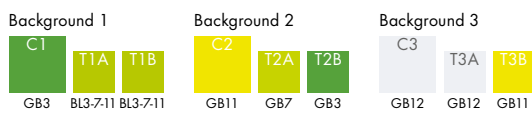
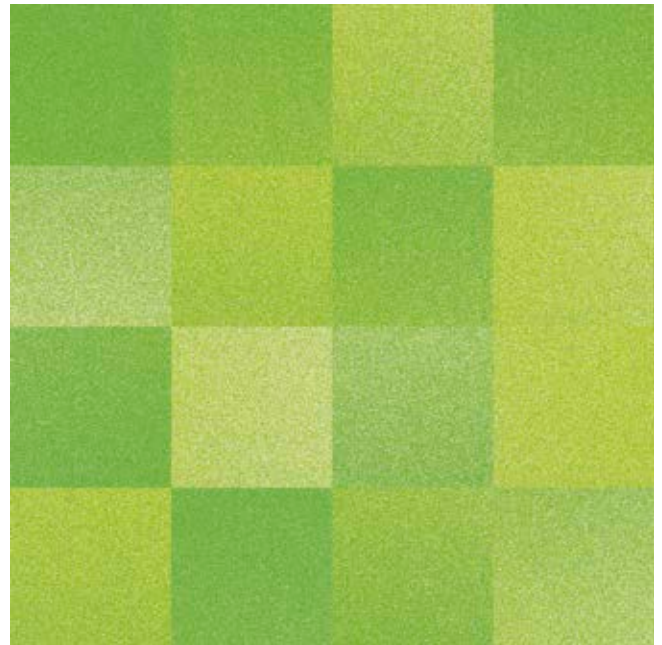
ES40006-88 Gradient



2 x 2 tiles

ES40006-89 Gradient

4 x 4 tiles



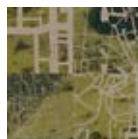
Collection overview

On the following pages, you find a complete overview of all Cityscapes designs in various colour combinations.

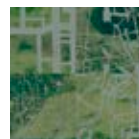
Aerial Map



RFM52205016



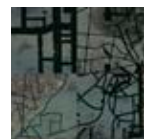
RFM52955010
page 14



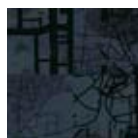
RFM52205011
page 16



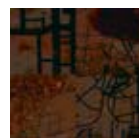
RFM52955012
page 27



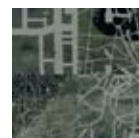
RFM52755013
page 44



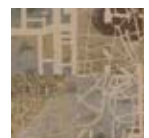
RFM52755014
page 34



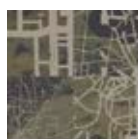
RFM52755015
page 48



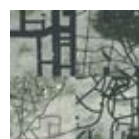
RFM52205016
page 67



RFM52955017
page 53



RFM52955018
page 61

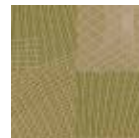


RFM52205019
page 70

Construction



RFM52205033



RFM52955020
page 12



RFM52955021
page 12



RFM52955022
page 12



RFM52205023
page 17



RFM52955024
page 24



RFM52955025
page 24



RFM52755026
page 34



RFM52955027
page 48



RFM52205028
page 66



RFM52955029
page 64



RFM52955030
page 64



RFM52755031
page 74



RFM52205032
page 74

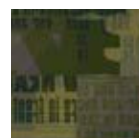


RFM52205033
page 74

Double Dutch



RFM52205050



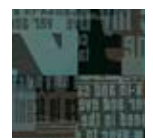
RFM52955040
page 9



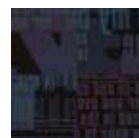
RFM52205041
page 17



RFM52955042
page 24



RFM52755043
page 46



RFM52755044
page 40



RFM52955045
page 49



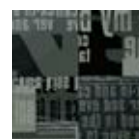
RFM52955046
page 65



RFM52955047
page 56



RFM52955048
page 64

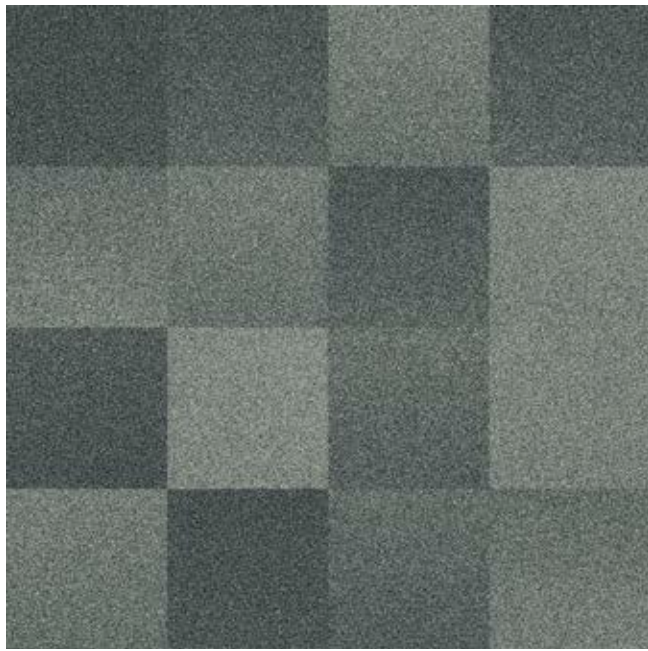


RFM52205049
page 74

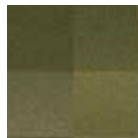


RFM52205050
page 74

Gradient



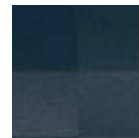
RFM52205070



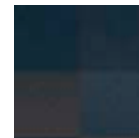
RFM52955060
page 11



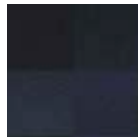
RFM52205061
page 18



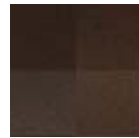
RFM52955062
page 30



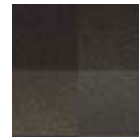
RFM52955063
page 44



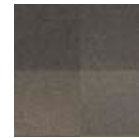
RFM52755064
page 40



RFM52955065
page 51



RFM52955066
page 62



RFM52955067
page 62



RFM52755068
page 54

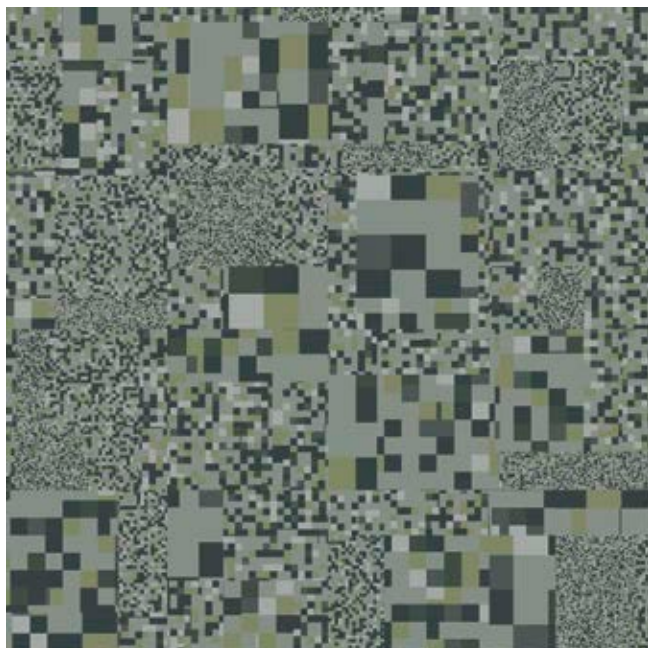


RFM52755069
page 60

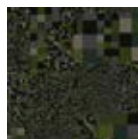


RFM52205070
page 75

Pixellations



RFM52205089



RFM52955080
page 10



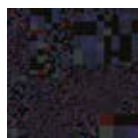
RFM52205081
page 18



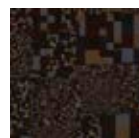
RFM52955082
page 27



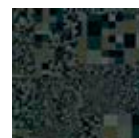
RFM52755083
page 43



RFM52755084
page 36



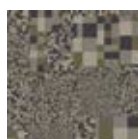
RFM52955085
page 49



RFM52205086
page 67



RFM52955087
page 54



RFM52955088
page 60



RFM52205089
page 70

Skylines



RFM52205093

Pile direction →



RFM52955090
page 14



RFM52955091
page 29



RFM52955092
page 57



RFM52205093
page 72

Spanish Tiles



RFM52205108



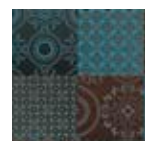
RFM52955100
page 11



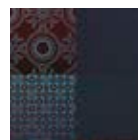
RFM52205101
page 20



RFM52955102
page 30



RFM52755103
page 46



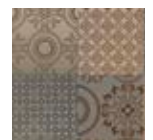
RFM52755104
page 33



RFM52955105
page 50



RFM52205106
page 66

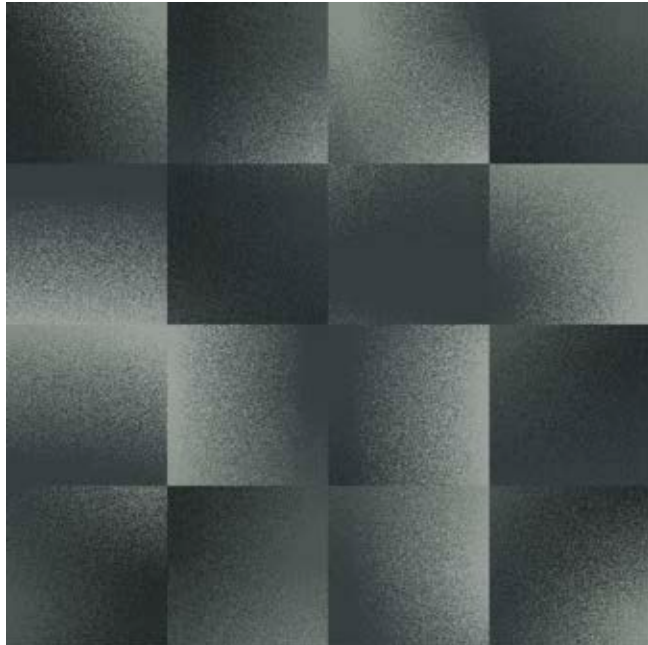


RFM52955107
page 57

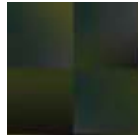


RFM52205108
page 72

Spotlight



RFM52205117



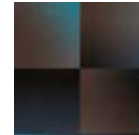
RFM52955110
page 11



RFM52205111
page 21



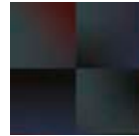
RFM52955112
page 28



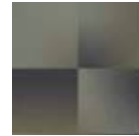
RFM52755113
page 44



RFM52755114
page 40



RFM52755115
page 40

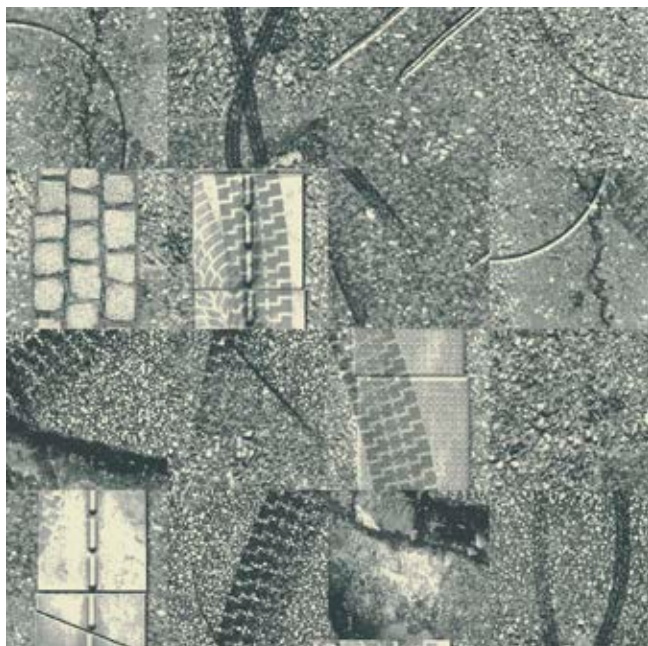


RFM52955116
page 64



RFM52205117
page 75

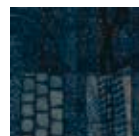
Street Level



RFM52205127



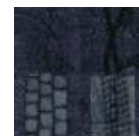
RFM52955120
page 15



RFM52955121
page 28



RFM52755122
page 45



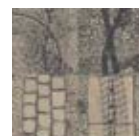
RFM52755123
page 37



RFM52755124
page 51



RFM52205125
page 68



RFM52955126
page 62



RFM52205127
page 68

Subway



RFM52205137



RFM52955130
page 10



RFM52205131
page 21



RFM52955132
page 26



RFM52755133
page 34



RFM52955134
page 49



RFM52205135
page 66



RFM52955136
page 61

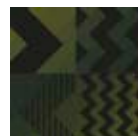


RFM52205137
page 71

Zig Zag



RFM52205148



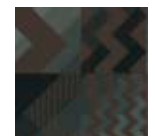
RFM52955140
page 12



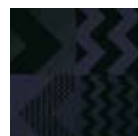
RFM52205141
page 18



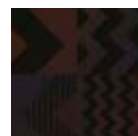
RFM52955142
page 22



RFM52755143
page 45



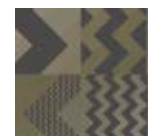
RFM52755144
page 36



RFM52955145
page 48



RFM52955146
page 54



RFM52955147
page 60



RFM52205148
page 70



RFM52755149
page 71

MODULAR SHUFFLE by ege

Production

The CITYSCAPES designs are produced as large patterns consisting of many different details and variations in scale and colour. The size of a full design is approximately 4 x 4 metres. The designs change in pattern and colours from top to bottom and from side to side.



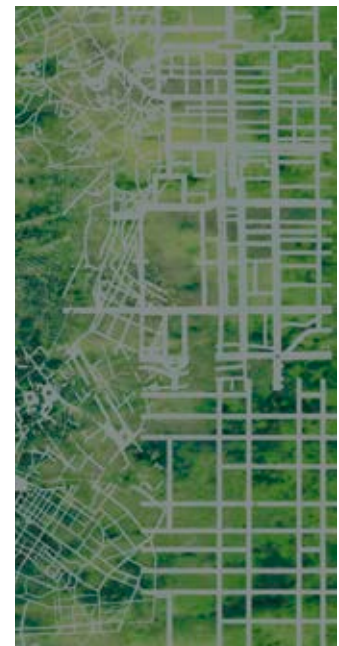
To ensure a proper shuffled expression in the finished modular installation, it is important to mix modular tiles from both sides of the roll.

For this purpose, the carpet roll is split in two parts and marked: A and B.

Pattern and colours are different on these two parts.

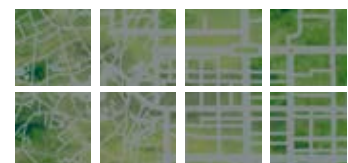
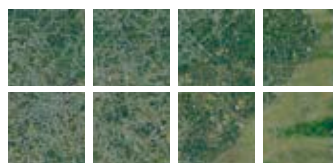


A

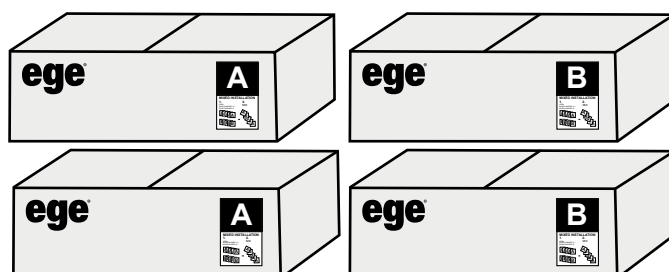
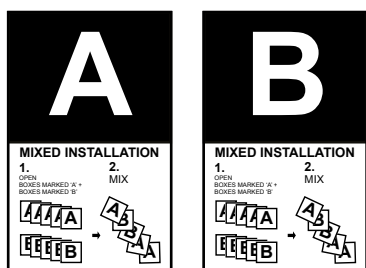


B

Each part is cut into modular tiles of 48 x 48 cm.



The tiles are boxed and each box is marked with labels indicating part A and B.

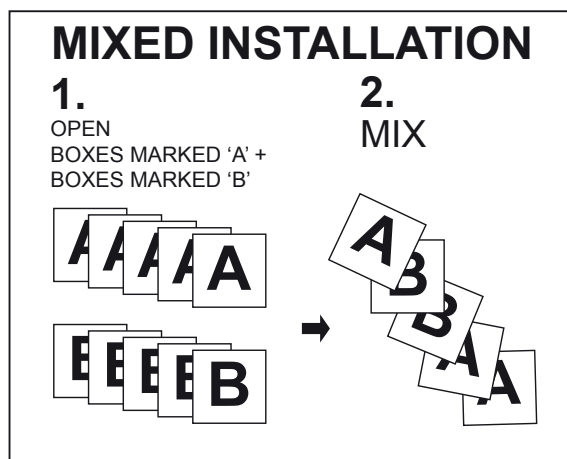


Installation

It is important to mix tiles from A boxes with tiles from B boxes to obtain a proper shuffled expression.

When Installing the tiles, open both A and B boxes, mix them randomly in a pile and start fitting. Easy installation instructions are available on a label on each box.

We recommend that CITYSCAPES designs are installed in the same pile direction.



Print types and sample material

CITYSCAPES designs have a repeat size of approximately 4 x 4 m. One repeat is cut into 64 different modular tiles creating a shuffled 'patchwork' expression when mixed and randomly installed. This mixed expression is shown in the catalogue as simulated installation examples consisting of either 2 x 2, 4 x 4, 8 x 4 or 8 x 8 tiles.

Design prints all show a simulated installation example of 8 x 8 tiles.

Print types available:

For orders:

- A design print showing a simulated installation example of 8 x 8 tiles.
- A technical print showing one full repeat of the production design

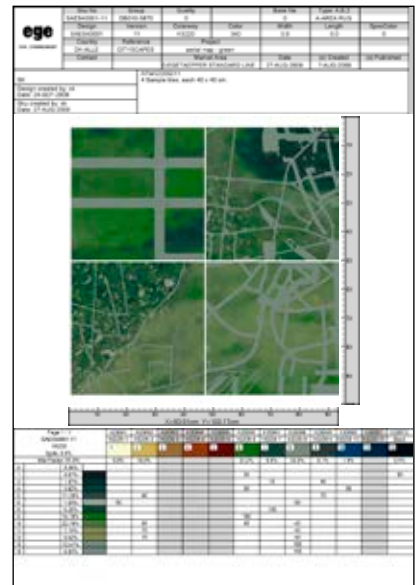
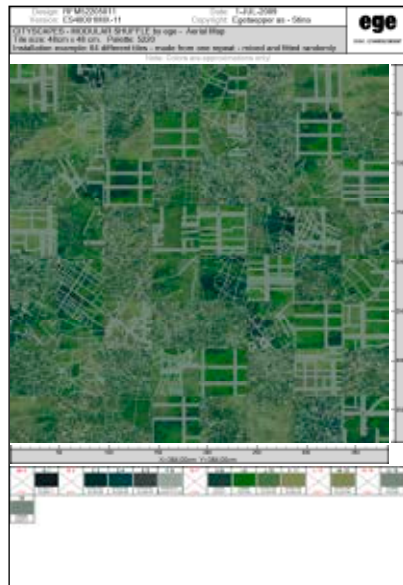
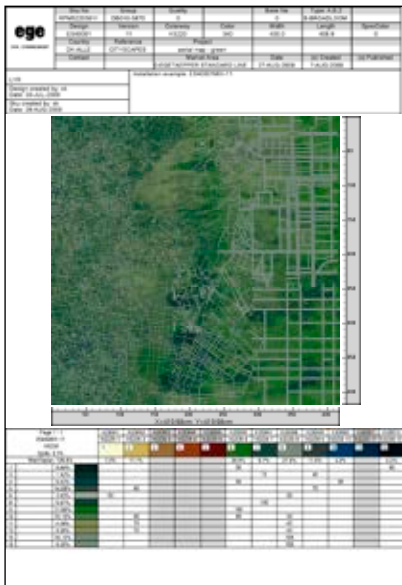
For colour variations:

- A design print showing a simulated installation example of 8 x 8 tiles.

For samples:

- A design print showing a simulated installation example of 8 x 8 tiles.
- A technical print showing four predefined sample tiles of 40 x 40 cm

2D and 3D image prints are of course also available on request.



Sample material

Samples are manufactured to order as a predefined selection of 4 different smaller sample tiles of 40 x 40 cm.

For mock-up rooms, we recommend that a minimum of 16 m² is ordered, which corresponds to one full repeat, to get an impression of the full variety of the design.

How to read the colour information

Most CITYSCAPES designs are composed by a large range of colours in order to produce the collection's many background variations and photographic effects. Many of the colours are toned with tiny textures using one or two colours to obtain a vibrant, nuanced look and to spice up larger solid areas in the designs.

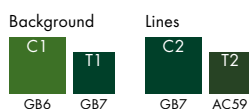
Tonal effects

The textures are illustrated as follows:

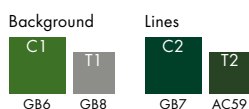
Main colours are shown with a large colour box (C1, C2 etc.)

Whereas the corresponding tonal colours are shown with a smaller colour box (T1, T2 etc.)

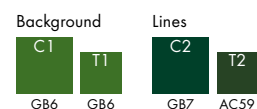
A texture with a dark tone will appear more dotted in the finished product



A texture with a light tone will appear more even in the finished product



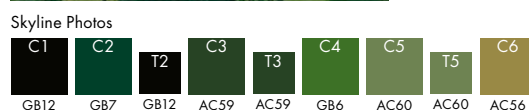
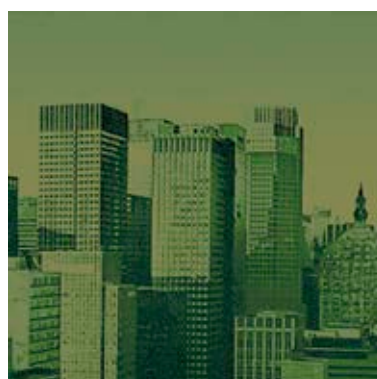
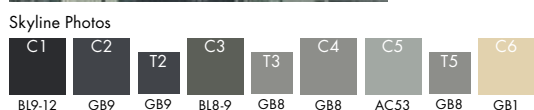
A texture with the same tone as the main colour will look solid in the finished product



Photographic effects

Some designs in the collection contain photographic elements. To retain the photographic look while recolouring, please select a range of colours from dark to light as indicated with the gradient bar shown below the design in question.

In the example below, the range of colours from black to white has been substituted with a range of colours from dark to light green colours. The tone T2 is used to darken the main green colour C2, creating a more harmonious gradient effect.



Further information on recolouring, available on page 96.

How to recolour

Easy recolouring

Simply contact your ege customer care contact and explain your wishes. Subsequently, one or more suggestions on print or sample will be prepared for you.

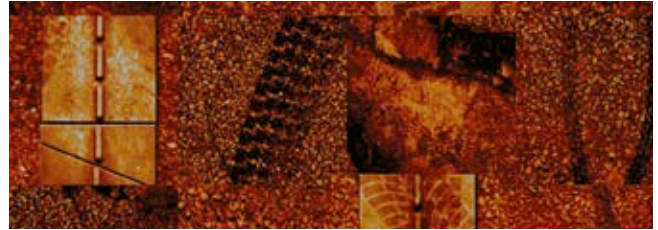
Example 1:

You like RFM52205127, but would like to see it in a red version, with GB5 from palette 5220 as a dominant colour.

RFM52205127



Colour variant: ES40012MIX-100



Specifying your wishes

You are of course also welcome to specify your colour changes for each code according to a selected colour key.

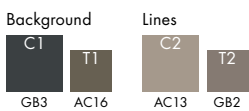
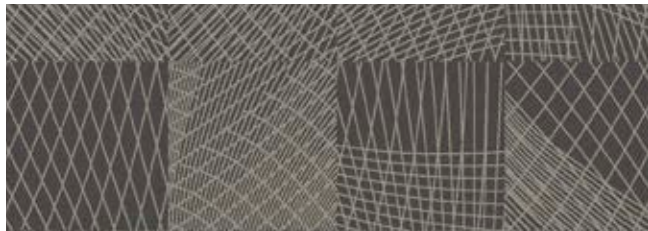
Example 2:

Please recolour RFM52955030 on special palette 5269 as follows:

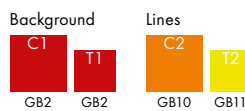
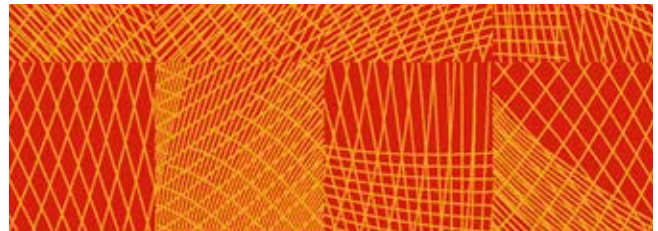
C1: GB2, T1: GB2 (making the background solid)

C2: GB10, T2: GB11 (toning C2 a little lighter)

RFM52955030



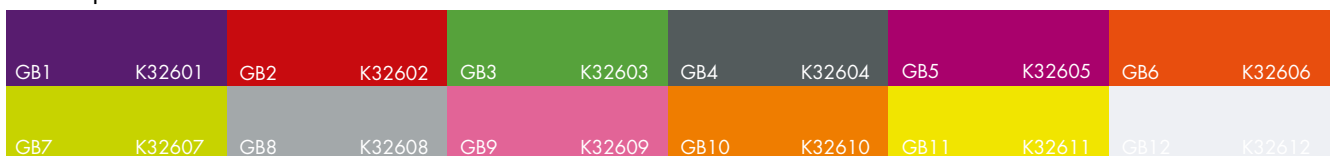
Colour variant: ES40002MIX-101



Special colour palette 5269, ALMOST NEON

Please note that the special colour palette 5269 is subjected to special price and delivery conditions according to the ege Highline Modular Express concept.

Colour palette 5269



Colour palettes

Colour palette 5220

GB1	A20041	GB2	A20042	GB3	A20043	GB4	K20044	GB5	K20045	GB6	K20046
GB7	K20047	GB8	K20048	GB9	K20049	GB10	K20050	GB11	K20051	GB12	K20012

Accent Colours - for use in areas of max. 10x10 cm

AC43	AC44	AC45	AC46	AC47	AC48	AC49	AC50	AC51	AC52	AC53	AC54	AC55	AC56	AC57	AC58	AC59	AC60
AC61	AC62	AC63	AC64	AC65	AC66	AC67	AC68	AC69	AC70	AC71	AC72	AC73	AC74	AC75	AC76	AC77	

Colour palette 5275

GB1	K28328	GB2	K28329	GB3	K28378	GB4	K28374	GB5	K28366	GB6	K28364
GB7	K28380	GB8	K28379	GB9	K27886	GB10	K28360	GB11	K28367	GB12	K28368

Accent Colours - for use in areas of max. 10x10 cm

AC13	AC14	AC15	AC16	AC17	AC18	AC19	AC20	AC21	AC22	AC23	AC24	AC25	AC26	AC27	AC28	AC29	AC30
AC31	AC32	AC33	AC34	AC35	AC36	AC37	AC38	AC39	AC40	AC41	AC42	AC43	AC44	AC45	AC46	AC47	

Colour palette 5285

GB1	K28521	GB2	K28522	GB3	K28523	GB4	K28524	GB5	K28525	GB6	K28526
GB7	K28527	GB8	K28528	GB9	K28529	GB10	K28530	GB11	K28531	GB12	K20012

Accent Colours - for use in areas of max. 10x10 cm

AC13	AC14	AC15	AC16	AC17	AC18	AC19	AC20	AC21	AC22	AC23	AC24	AC25	AC26	AC27	AC28	AC29	AC30
AC31	AC32	AC33	AC34	AC35	AC36	AC37	AC38	AC39	AC40	AC41	AC42	AC43	AC44	AC45	AC46	AC47	

Colour palette 5295

GB1	K28601	GB2	K28602	GB3	K28603	GB4	K20012	GB5	K28605	GB6	K28606
GB7	K28607	GB8	K28608	GB9	K28609	GB10	K28610	GB11	K28611	GB12	K28632

Accent Colours - for use in areas of max. 10x10 cm

AC13	AC14	AC15	AC16	AC17	AC18	AC19	AC20	AC21	AC22	AC23	AC24	AC25	AC26	AC27	AC28	AC29	AC30
AC31	AC32	AC33	AC34	AC35	AC36	AC37	AC38	AC39	AC40	AC41	AC42	AC43	AC44	AC45	AC46	AC47	

CITYSCAPES – MODULAR SHUFFLE by ege

CITYSCAPES is a flexible concept of 48 x 48 cm modules, offering infinite possibilities of creating individual and expressive modular flooring solutions. Consider style, design, texture and budget and select the modular express quality matching your requirements.

Create unique flooring solutions by selecting designs from the collection or recolour with the Highline Express palettes to fit your needs.

CITYSCAPES makes it possible to adapt each room to the continuous changes a building is going through over time. Tiles can be removed whenever needed, providing easy access to the raised floor system. CITYSCAPES offers good indoor climate properties due to the easy to fit, 100 % textile modular backing.

All this with:

- 11 unique designs in a variety of standard colour themes
- 1 special colour theme
- Recolour options (see page 96)
- Available in: Highline 630, Highline 1100, Highline 80/20 1400, and Highline Loop Ecotrust
- Patented ege modular backing – 100 % textile containing no PVC, bitumen or any other potentially harmful substances
- Undisputed performance standard – EN 1307
- Performance classification to fit any need
- Minimum order requirements of 40 m² per quality and per colour palette, 200 m² for special colours
- 48 hours sample service – 40 x 40 cm, 4 predefined sample-tiles per design
- Sales conditions follow the standard guidelines for Highline Modular Express



Identification Characteristics	Standard	Highline 80/20 1400 Ecostrust	Highline 1100 Ecostrust	Highline 630 Ecostrust	Highline Loop Ecostrust
Structure	ISO 2424	Tufter cut pile	Tufter cut pile	Tufter cut pile	Tufter loop pile
Gauge	ISO 2424	1/8	1/8	1/10	1/10
Pile	DIR 96/73, 96/74	80% wool, 20% polyamide	100% recycled polyamide	100% polyamide	100% polyamide
Coloration	-	Milliflon	Milliflon	Milliflon	Milliflon
Backing	eIT	Ecostrust 750	Ecostrust 750	Ecostrust 750	Ecostrust 750
Dimensions	ISO 3018	48x48 cm/96x96 cm	48x48 cm/96x96 cm	48x48 cm/96x96 cm	48x48 cm/96x96 cm
Total thickness	ISO 1765	Approx. 12.0 mm	Approx. 11.5 mm	Approx. 10.0 mm	Approx. 10.0 mm
Surface pile thickness	ISO 1766	Approx. 5.5 mm	Approx. 5.5 mm	Approx. 4.5 mm	Approx. 4.5 mm
Tufts	ISO 1743	Approx. 137,000 per m ²	Approx. 190,000 per m ²	Approx. 240,000 per m ²	Approx. 222,000 per m ²
Total carpet weight	ISO 8543	Approx. 3,500 g/m ²	Approx. 3,500 g/m ²	Approx. 2,800 g/m ²	Approx. 3,300 g/m ²
Pile yarn weight	eIT	1,400 g/m ²	1,100 g/m ²	630 g/m ²	680 g/m ²
Surface pile density	ISO 8543	Approx. 0.130 g/cm ³	Approx. 0.150 g/cm ³	0.100 g/cm ³	Approx. 0.100 g/cm ³
Antistatic protection	-	Yes	Yes	Yes	Yes
Moth-proofed	-	Yes	Yes	Yes	Yes
Performance Characteristics					
Performance areas	EN1307	Class 33 – Commercial – Heavy	Class 33 – Commercial – Heavy	Class 33 – Commercial – Heavy	Class 33 – Commercial – Heavy
Castor chair suitability	EN 985	Continuous use	Continuous use	Continuous use	Continuous use
Suitability for use on stairs	EN 1963	Yes	Yes	Yes	Yes
Static control	eIT	Permanently antistatic	Permanently antistatic	Permanently antistatic	Permanently antistatic
Vertical resistance	ISO/DIS 10965	-	<1x10 ¹⁰ ohm	<1x10 ¹⁰ ohm	<1x10 ¹⁰ ohm
Acou. insu. from impact noise	EN ISO 717-2/eITL	42 dB	31 dB	26 dB	29 dB
Acoustical absorption	ISO 354/eITL	0.40 aW	0.30 aW	0.30 aW	0.30 aW
Suitability for under floor heating	ISO 8302	Yes	Yes	Yes	Yes
Safety and Environmental Characteristics					
Indoor air	LEED DIM Certificat BASTA Emissions dans l'air intérieur GECA	Green label plus No. 006 Registered A+/A+	Green label plus No. 006 Registered A+/A+	Green label plus No. 006 Registered A+/A+	Green label plus No. 006 Registered A+/A+
Environmental profile	Bre Byggvarudeklaration	BVD3	ENP434 BVD3	ENP434 BVD3	ENP434 BVD3
CE Labeling	EN 14041 Declaration of Performance	Certified DOP:9711-20B	Certified DOP:9711-18C	Certified 0845-CPB-CX10018C	Certified DOP:9711-17C
Fire classifications	IMO DK, MK D, DBT AbZ, no CH, VKE/AEAI EN13501-1 Euroclass	Certified Approved B _s -1 B _s -1	Approved Z-156.601-441 Cfl-s1 Cfl-s1	Approved Z-156.601-441 Cfl-s1 Cfl-s1	Approved Z-156.601-440 Cfl-s1 Cfl-s1
Guides					
Installation & adhesive guide	DK, N, S, GB, D, F	DK, N, S, GB, D, F	DK, N, S, GB, D, F	DK, N, S, GB, D, F	DK, N, S, GB, D, F
Cleaning	DK, N, S, GB, D, F	DK, N, S, GB, D, F	DK, N, S, GB, D, F	DK, N, S, GB, D, F	DK, N, S, GB, D, F
Manufacturer Characteristics					
Quality management	ISO 9001	Audited and verified by Bureau Veritas Certification	Audited and verified by Bureau Veritas Certification	Audited and verified by Bureau Veritas Certification	Audited and verified by Bureau Veritas Certification
Environmental management	ISO 14001	Audited and verified by Bureau Veritas Certification	Audited and verified by Bureau Veritas Certification	Audited and verified by Bureau Veritas Certification	Audited and verified by Bureau Veritas Certification
Eco management	EMAS	Audited and verified by Bureau Veritas Certification	Audited and verified by Bureau Veritas Certification	Audited and verified by Bureau Veritas Certification	Audited and verified by Bureau Veritas Certification
Occupational Health & Safety	DS/OHSAS 18001	Audited and verified by Bureau Veritas Certification	Audited and verified by Bureau Veritas Certification	Audited and verified by Bureau Veritas Certification	Audited and verified by Bureau Veritas Certification
Carpet recycling UK	www.carpetrecyclinguk.com	Member	Member	Member	Member



design · quality · respect

SUBSIDIARIES:

Denmark
China
France
Germany
Norway
Singapore
Sweden
United Arab Emirates
United Kingdom

AGENTS/DISTRIBUTORS:

Australia	Iceland	New Zealand
Austria	India	Oman
Bahrain	Iran	Pakistan
Belgium	Ireland	Panama
Bosnia - Herzegovina	Italy	Poland
Bulgaria	Japan	Portugal
Canada	Jordan	Qatar
Colombia	Kenya	Romania
Costa Rica	Korea	Russia
Croatia	Kuwait	Saudi Arabia
Cyprus	Latvia	Serbia
Czech Republic	Lebanon	Slovakia
Estonia	Lithuania	Slovenia
Finland	Luxembourg	South Africa
Georgia	Macau	Spain
Greece	Malta	Switzerland
Guatemala	Mexico	Turkey
Hong Kong	Montenegro	Ukraine
Hungary	Netherlands	

For further contact information please visit
www.egecarpets.com