

Fields of Flow



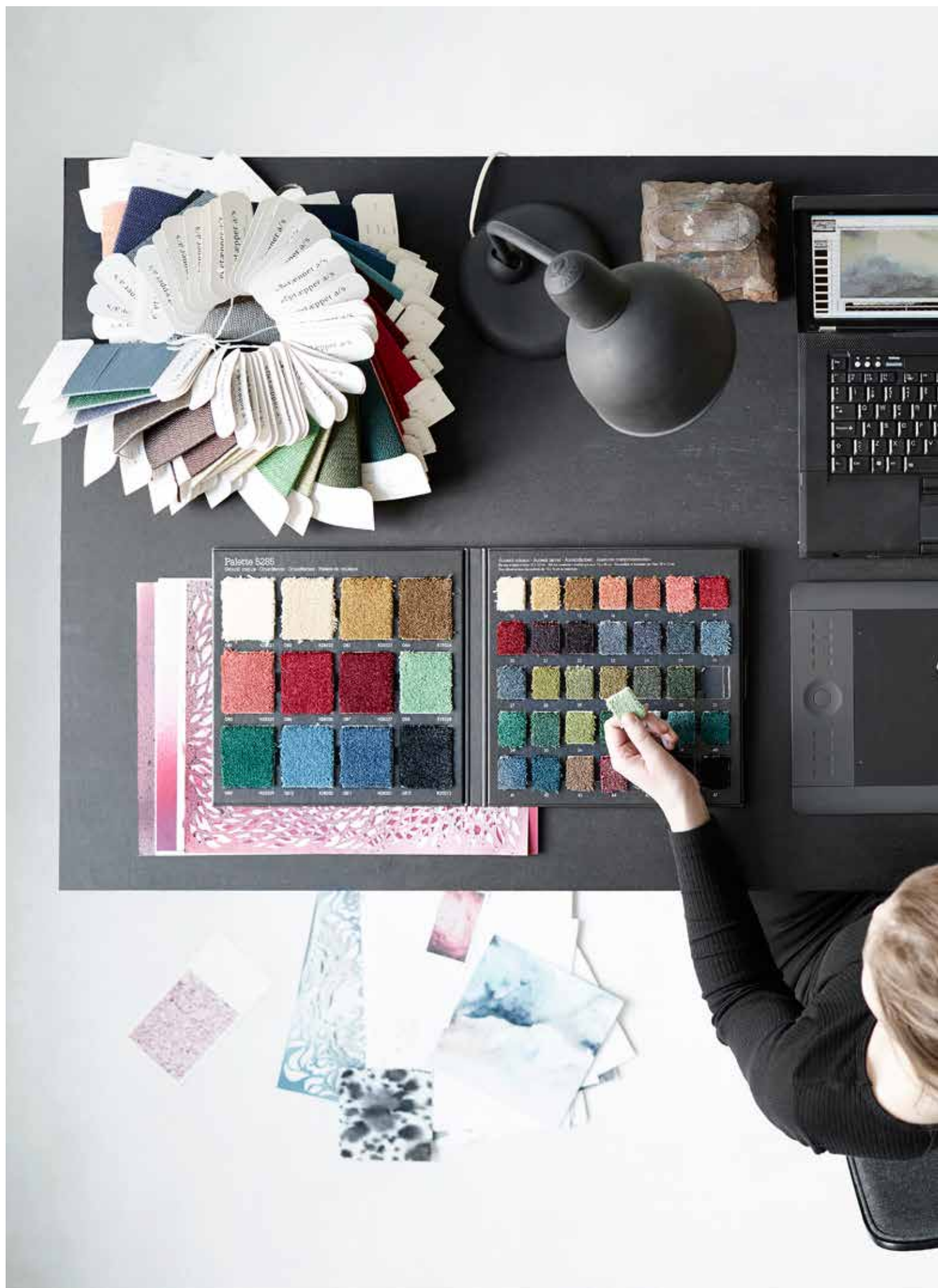
Highline Express Collection by

ege[®]

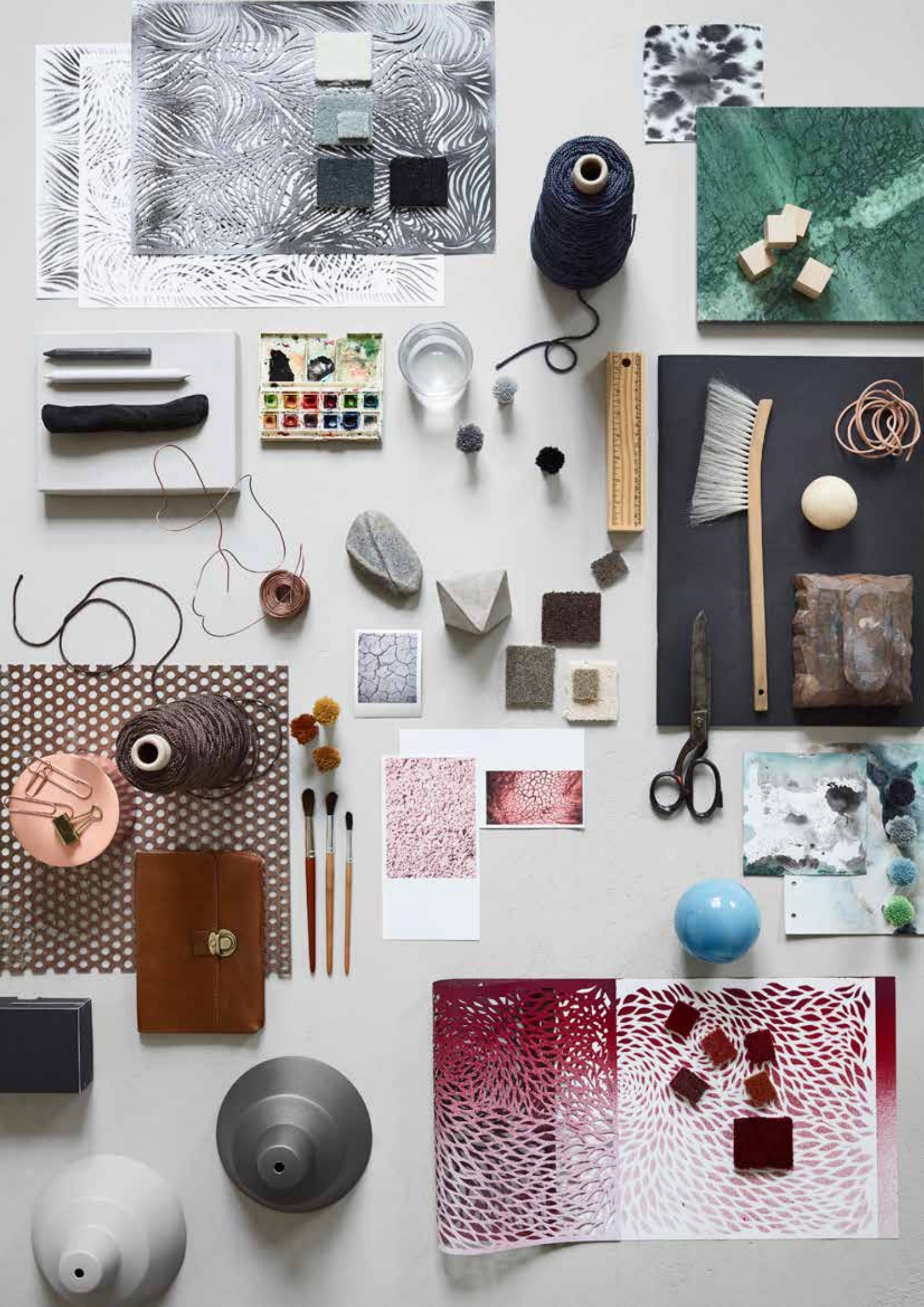
THE URGE TO EXPLORE SPACE

Contents

| | |
|-----------|---------------------------------|
| 7 | Intro |
| 10 | Water |
| 18 | Fire |
| 26 | Wood |
| 34 | Metal |
| 42 | Earth |
| 49 | Collection overview |
| 50 | Colour palettes |
| 51 | Recolour options |
| 52 | Colour inspiration |
| 55 | Technical specifications |









The designer

Signe Fink Nørgaard. Born in 1979. Holds a Design degree from Design School Kolding, Denmark. Has worked as a designer for ege carpets since 2010.

The collection

Fields of Flow reflects the area of tension between traditional Asian culture and Scandinavian design. A strong fusion based on respect for Feng Shui symbols, reinterpreting them by looking through the eyes of a young Danish designer.

Through abstractions and creative thinking the elements have been clarified and sophisticated, twisted and simplified, enlarged and beautified over and over again into a contemporary interpretation of old values.

The design process combines traditional craft of paper cuts and watercolours with modern design techniques. An aesthetic journey through different cultures combining the best aspects from both in a unique and expressive collection.

The inspiration

Everyone appreciates the benefits of harmony, balance and a positive state of mind.

Feng Shui, a study of the relationship between the environment and human life, is the keyword for the Fields of Flow collection. Discovered by the Chinese, Feng Shui has been practiced for centuries to design environments that enhance conditions for success in life.

In addition, the collection is strongly inspired by the Yin and Yang mindset that characterises the Chinese way of thinking – the belief that the universe is constructed by the 5 elements water, fire, wood, metal and earth.

5 design themes

The Fields of Flow collection consists of 5 design themes with independent designs having a clear reference to each other. The expressions vary from small scale and calm patterns to bigger scale and more vivid patterns.

3 layerings

Each design works beautifully on its own. However, the design themes are constructed around a layering concept meaning that two individual designs can be combined into a third design – a unique mash up of patterns. Behind each layer is hidden new meanings that when combined transform into impressive floor designs.

+ possibilities

Each design theme enables an interconnected floor design from room to room and calls for the floor to be used creatively to create strong and coordinated expressions.

Fields of Flow comes in 9 different qualities and is available as broadloom, corridors and runners. This catalogue embraces the colour stories that support the elements but it is possible to make recolourations. Learn how to recolour on page 51 and see pages 52-53 for alternative colour inspiration.

Enjoy exploring space.



water

Water is the strongest element as it moves between or around something without losing its original substance and shape. Over time, water can defeat even the biggest and strongest mountain. Lotus flowers stand for purity. Rise from muddy waters to bloom in beautiful white and symbolise the ability of enlightened souls to rise above worldly concerns. Waves symbolise creativity and sensitivity.







RF52202480 LOTUS

w: 195.1 cm x l: 152.4 cm

K5220



RF52202481 WAVE

w: 195.1 cm x l: 152.4 cm

K5220



RF52202482 LOTUS WAVE

w: 195.1 cm x l: 152.4 cm

K5220



RF52202485 WAVE RUNNER
w: 130 cm x l: 152.4 cm

K5220



Approx. 100 cm

Approx. 100 cm



GB12 GB9

RF52202484 WAVE CORRIDOR
w: 195.1 cm x l: 152.4 cm

K5220



Approx. 100 cm

Approx. 100 cm



GB12 GB9

RF52202483 LOTUS WAVE SHADOW
w: 195.1 cm x l: 152.4 cm

K5220



Approx. 100 cm

Approx. 100 cm

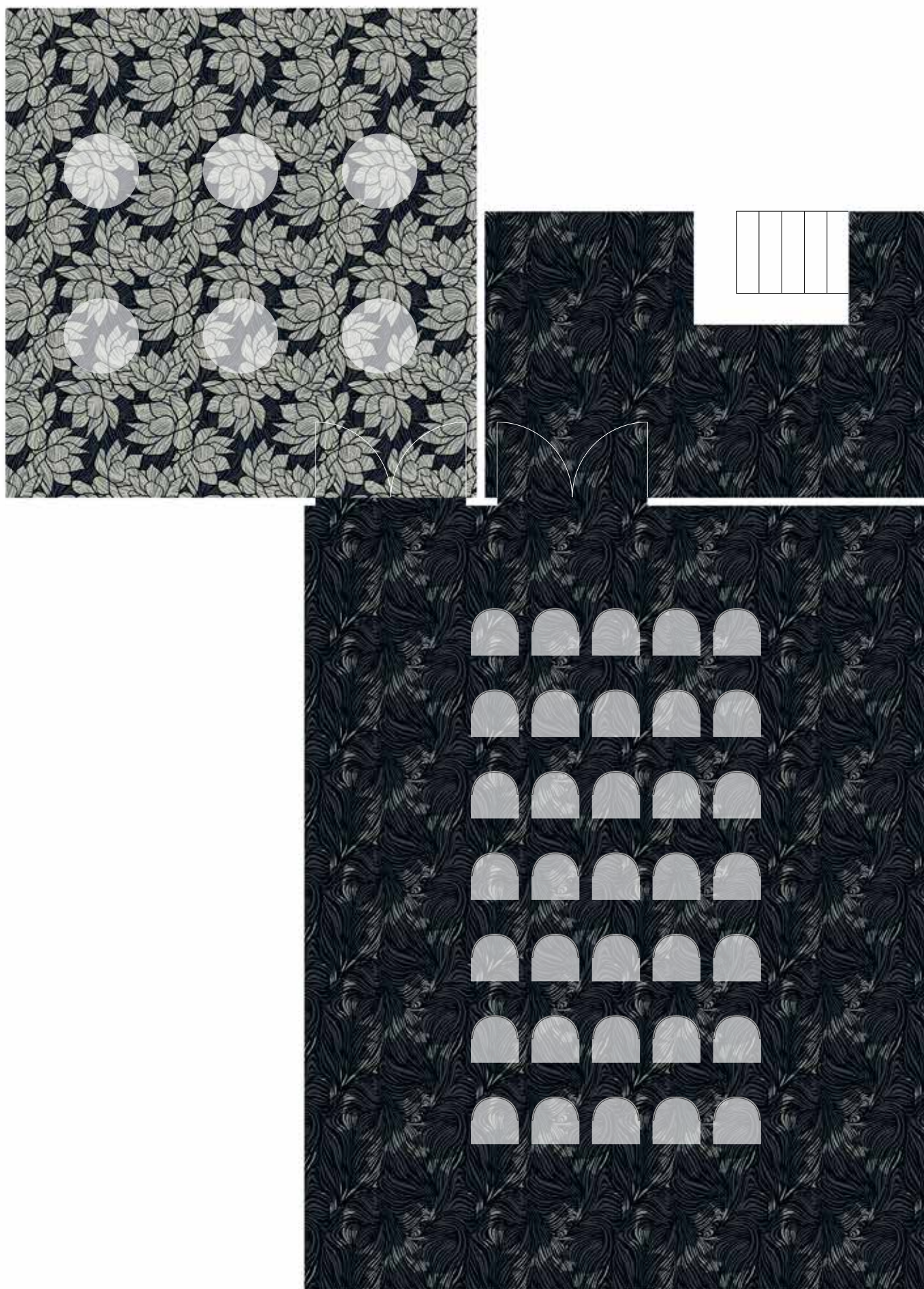
400 cm



GB12 GB8 GB9



Floorscape inspiration



fire

Fire is the most masculine element. Connected to heat and the only element that does not exist in itself – it has to be made. Lucky clouds reflect the beautiful and fascinating sky with ever changing shapes. Clouds are so close to the sun that they ignite people's wild imagination. Chrysanthemum flowers symbolise timelessness and life in ease and balance.







RF52851875 LUCKY CLOUDS
w: 390.1 cm x l: 304.8 cm

K5285



RF52851876 CHRYSANTHEMUM
w: 390.1 cm x l: 304.8 cm

K5285



RF52851877 LUCKY CLOUDS CHRYSANTHEMUM
w: 390.1 cm x l: 304.8 cm

K5285



RF52851879 CHRYSANTHEMUM RUNNER K5285
w: 130 cm x l: 152.4 cm



RF52851878 CHRYSANTHEMUM CORRIDOR
w: 195.1 cm x l: 152.4 cm



K5285

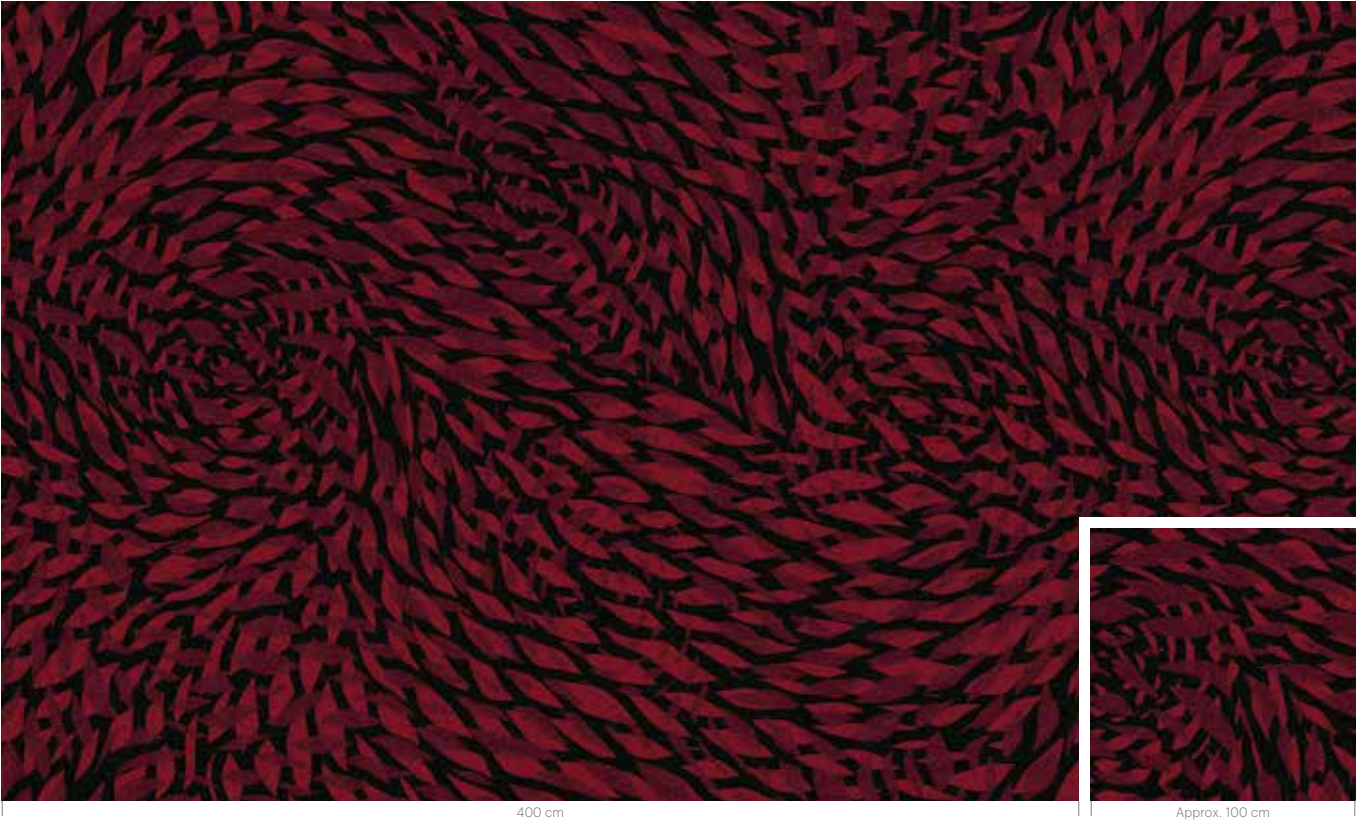
RF52851880 CHRYSANTHEMUM DOUBLE
w: 390.1 cm x l: 304.8 cm



K5285

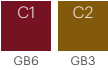
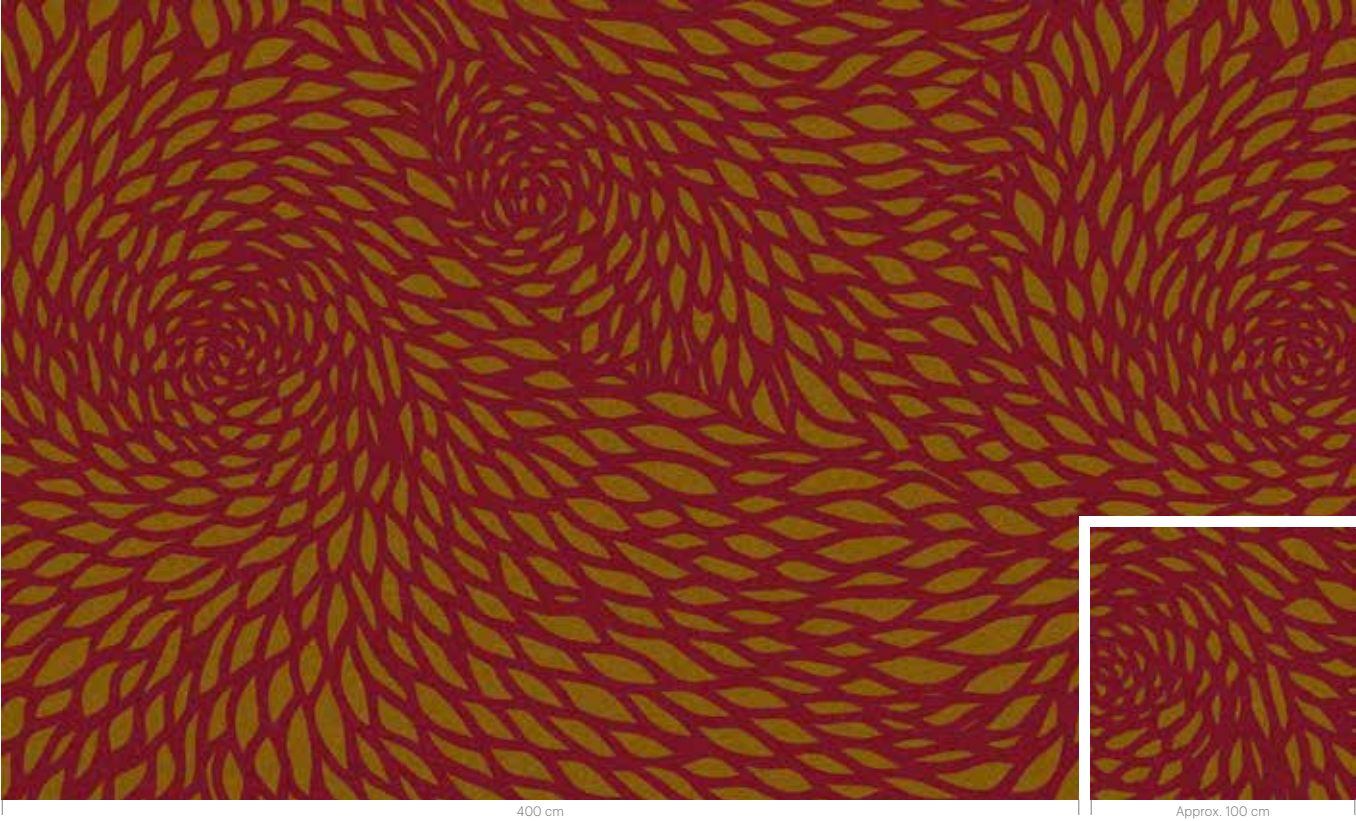
RF52851881 CHRYSANTHEMUM DOUBLE 田
w: 390.1 cm x l: 304.8 cm

K5285

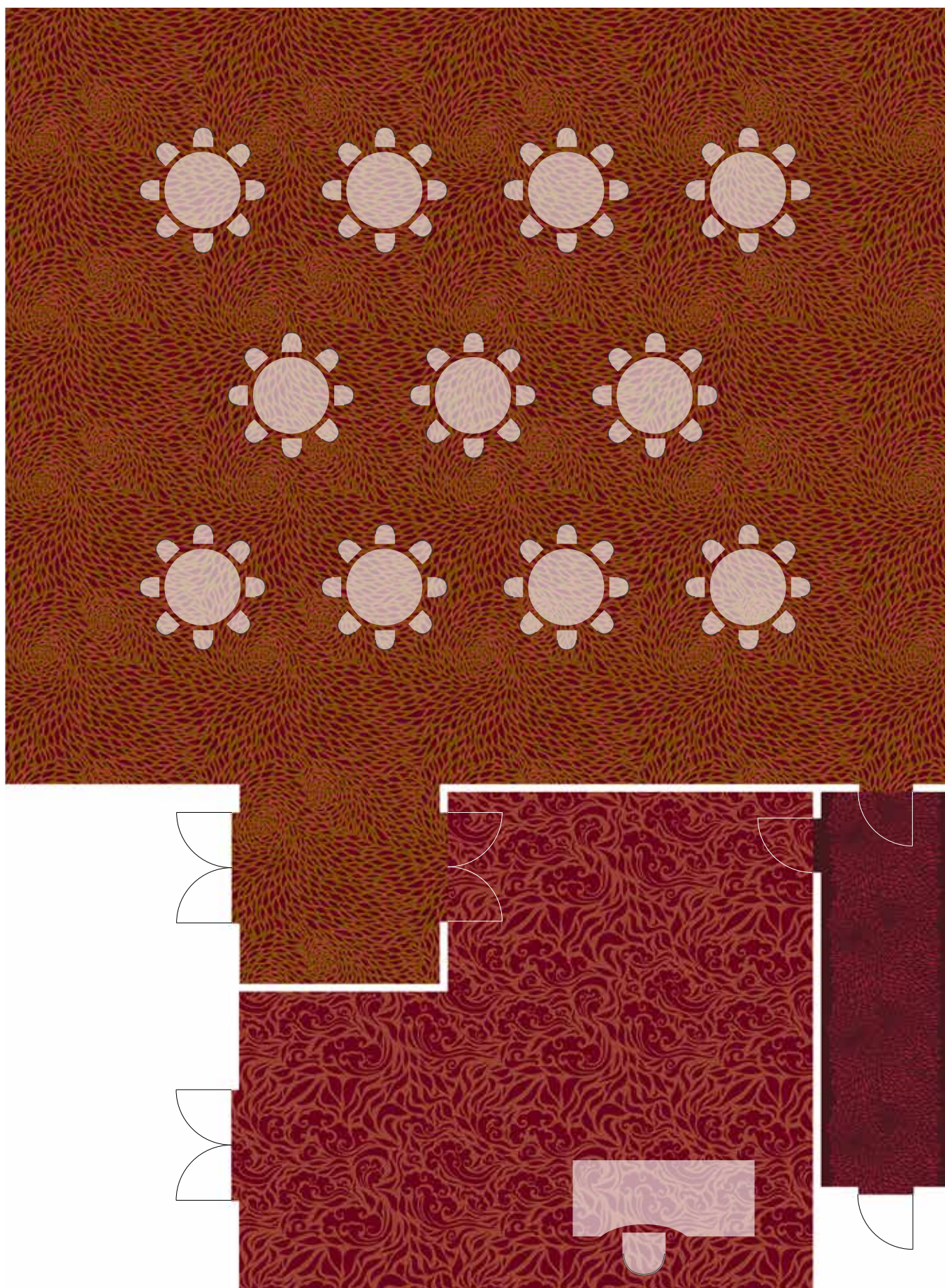


RF52851882 CHRYSANTHEMUM
w: 390.1 cm x l: 304.8 cm

K5285



Floorscape inspiration



wood

Wood reflects values such as idealism, straightforwardness, innovation and dedication. Connected to the wind, which tends to blow most strongly in springtime. Bamboo has the perfect balance of grace and strength – of Yin and Yang. Its ability to cope with adversity and still stand firmly without losing its original ground is inspirational. Watercolour is an ancient Chinese technique reinterpreted in a modern and powerful way. Adds a translucent and artistic feeling.







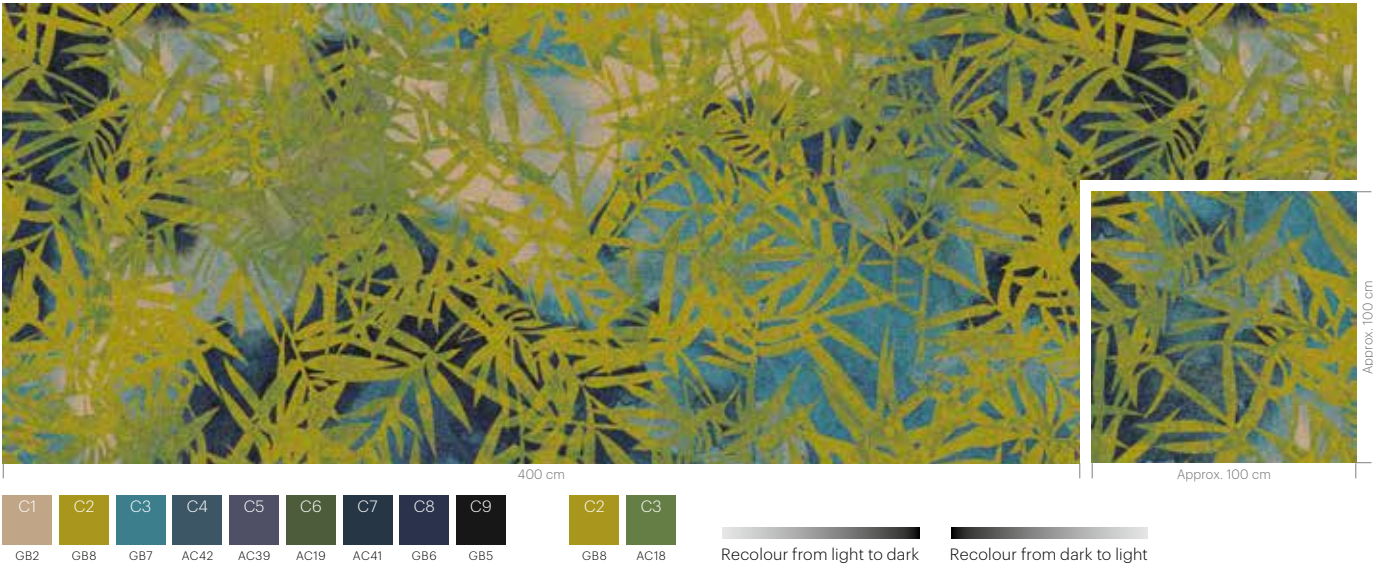
RF52752880 WATERCOLOUR 111
w: 390.1 cm x l: 304.8 cm

K5275



RF52752881 WATERCOLOUR BAMBOO 111
w: 390.1 cm x l: 304.8 cm

K5275

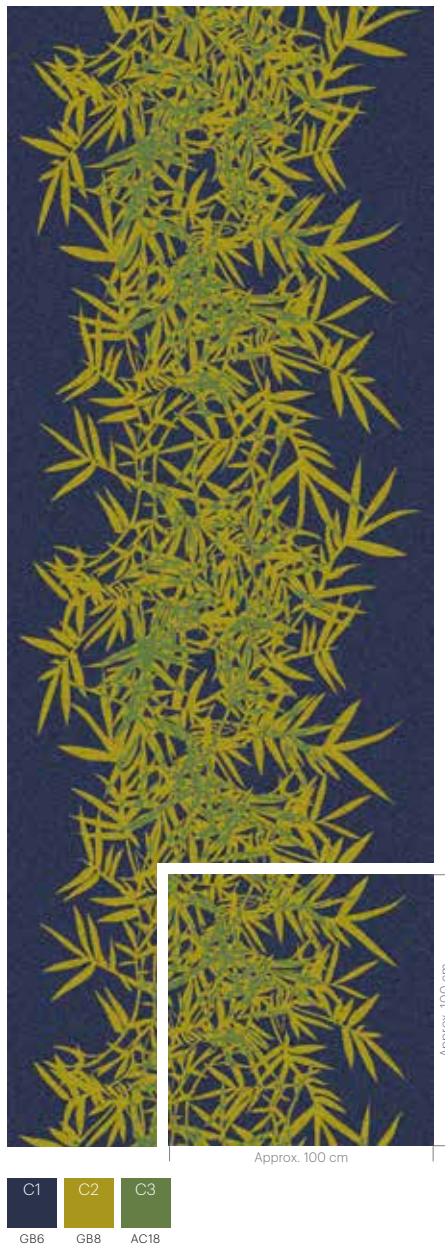


RF52752882 BAMBOO 111
w: 390.1 cm x l: 304.8 cm

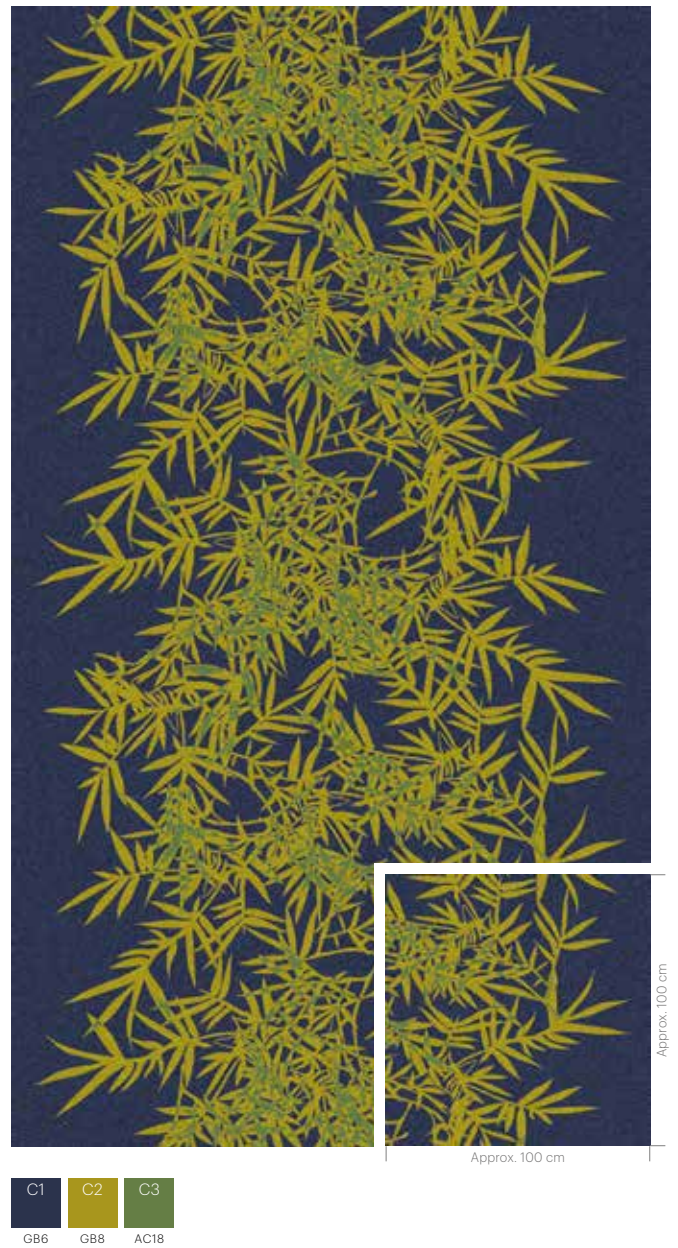
K5275



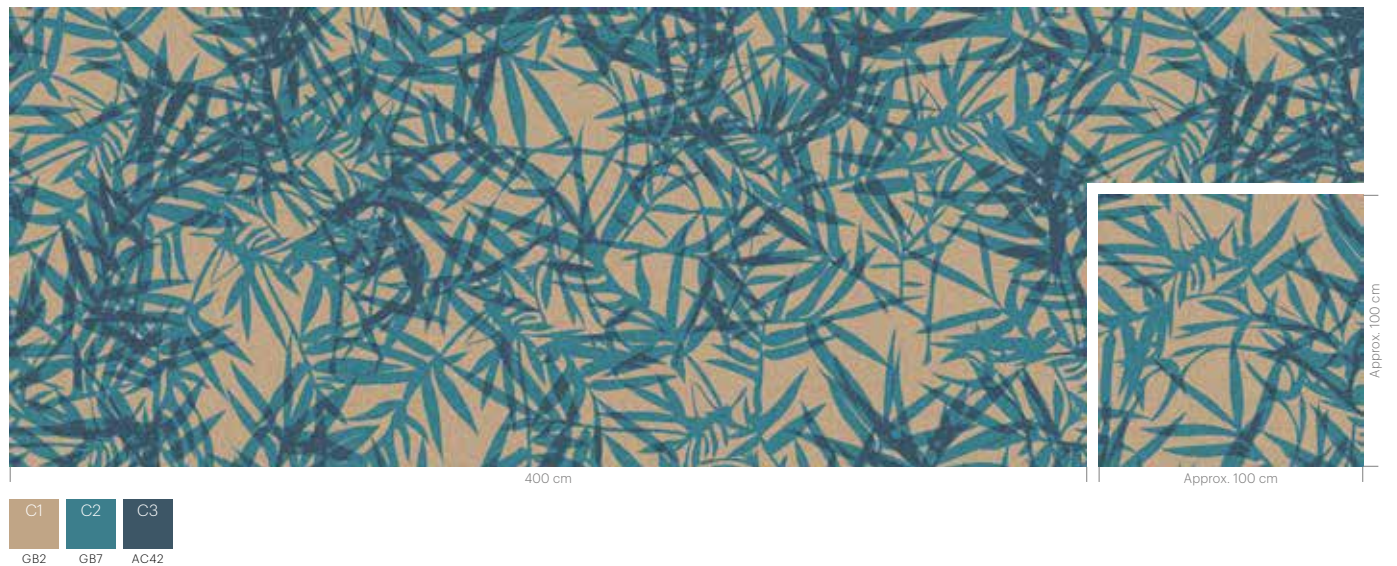
RF52752884 GRAPHIC BAMBOO RUNNER K5275
w: 130 cm x l: 152.4 cm



RF52752883 GRAPHIC BAMBOO CORRIDOR K5275
w: 195.1 cm x l: 152.4 cm

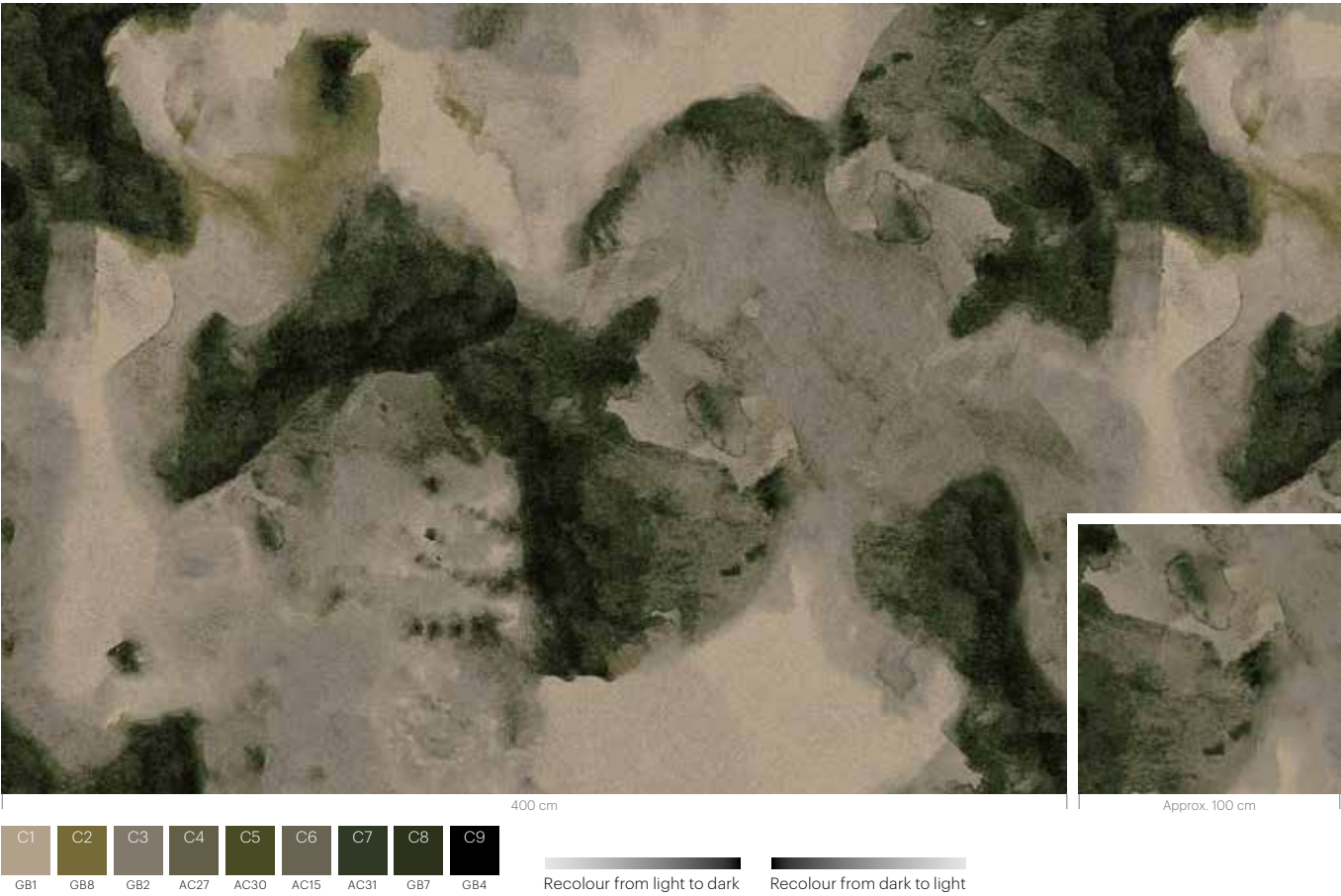


RF52752885 GRAPHIC BAMBOO K5275
w: 390.1 cm x l: 304.8 cm



RF52951935 WATERCOLOUR 田
w: 390.1 cm x l: 304.8 cm

K5295

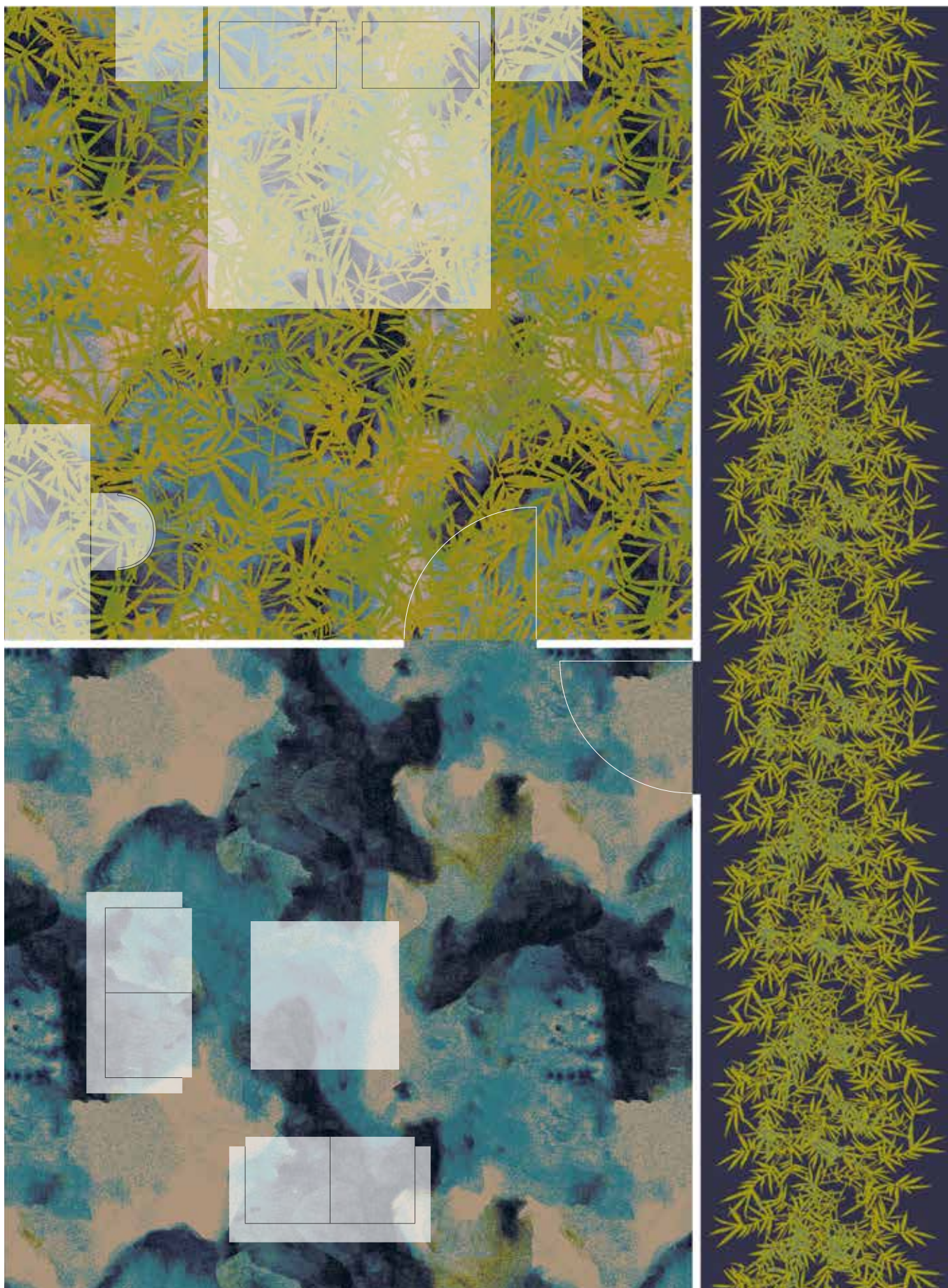


RF52951936 WATERCOLOUR BAMBOO 竹
w: 390.1 cm x l: 304.8 cm

K5295



Floorscape inspiration



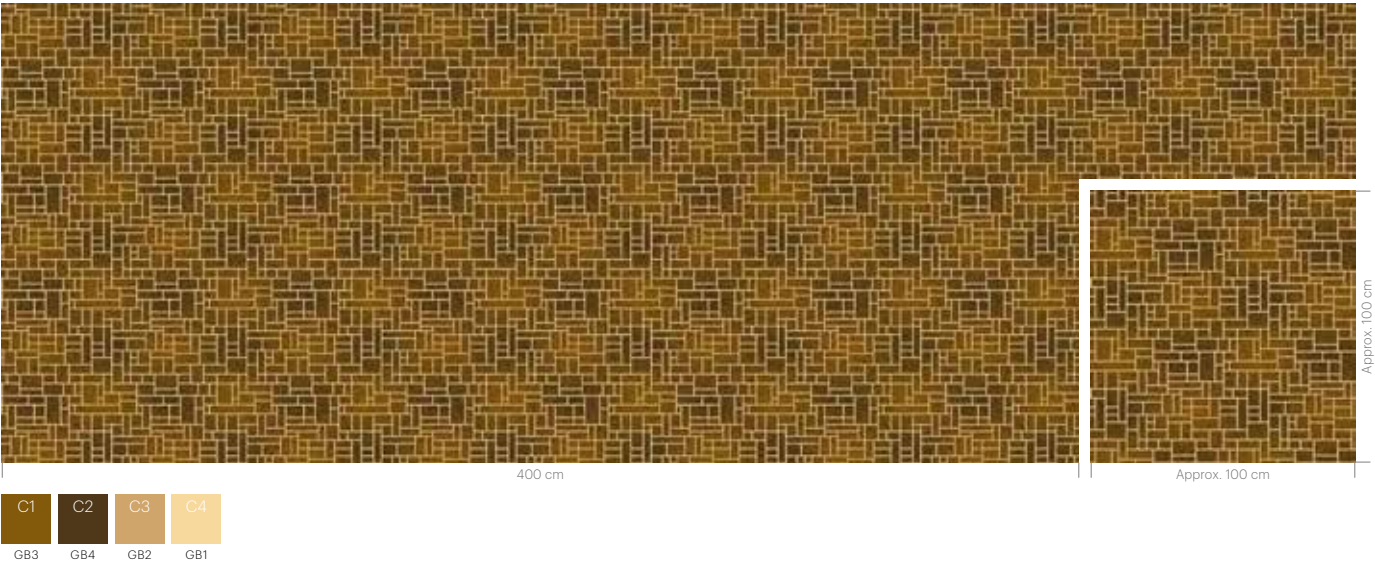
metal

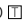
Metal is the element that stands for order and perspective. It correlates to creativity and strength, independence and focus is vital. Squared elements inspired by patterns from Chinese iron gates symbolise the strong and structured characteristics of the metal element.



RF52851883 GRID
w: 48.8 cm x l: 38.1 cm

K5285



RF52851884 LACQUERED BOX GRID 
w: 48.8 cm x l: 38.1 cm

K5285



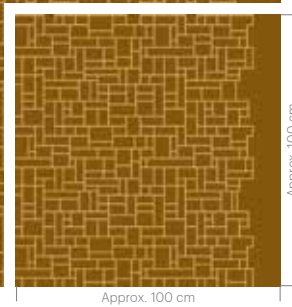
RF52851885 LACQUERED BOX
w: 24.4 cm x l: 19.1 cm

K5285



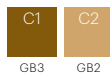
RF52851887 GRID RUNNER
w: 130 cm x l: 76.2 cm

K5285



Approx. 100 cm

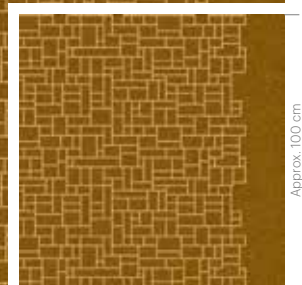
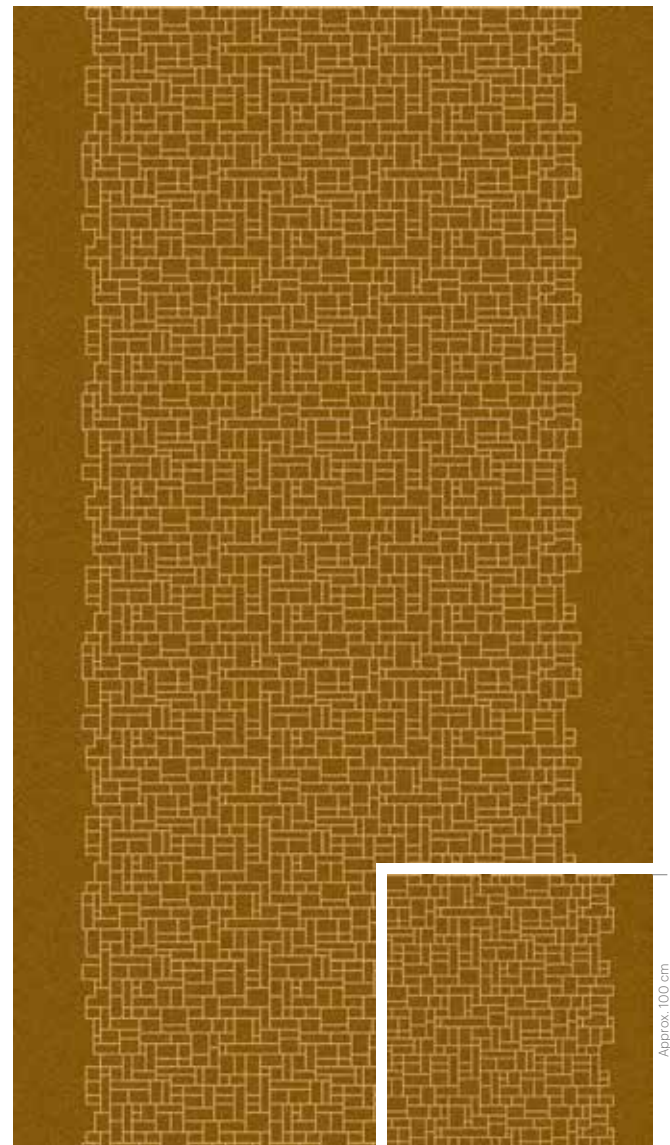
Approx. 100 cm



GB3 GB2

RF52851886 GRID CORRIDOR
w: 195.1 cm x l: 76.2 cm

K5285



Approx. 100 cm

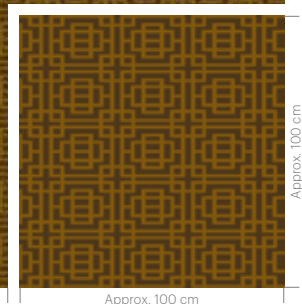
Approx. 100 cm



GB3 GB2

RF52851888 LACQUERED BOX
w: 24.4 cm x l: 19.1 cm

K5285



Approx. 100 cm

Approx. 100 cm

400 cm



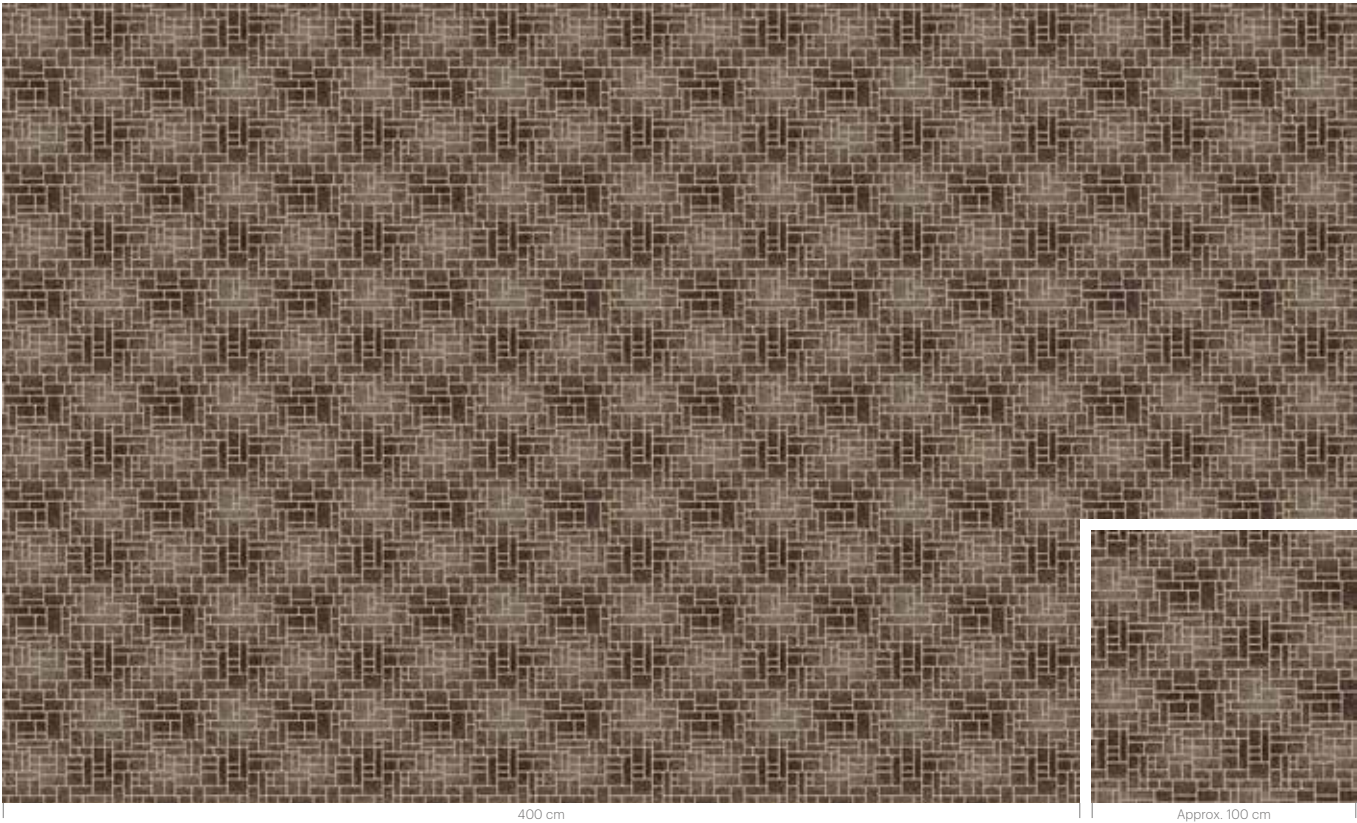
GB4 GB3






RF52752893 GRID
w: 48.8 cm x l: 38.1 cm

K5275

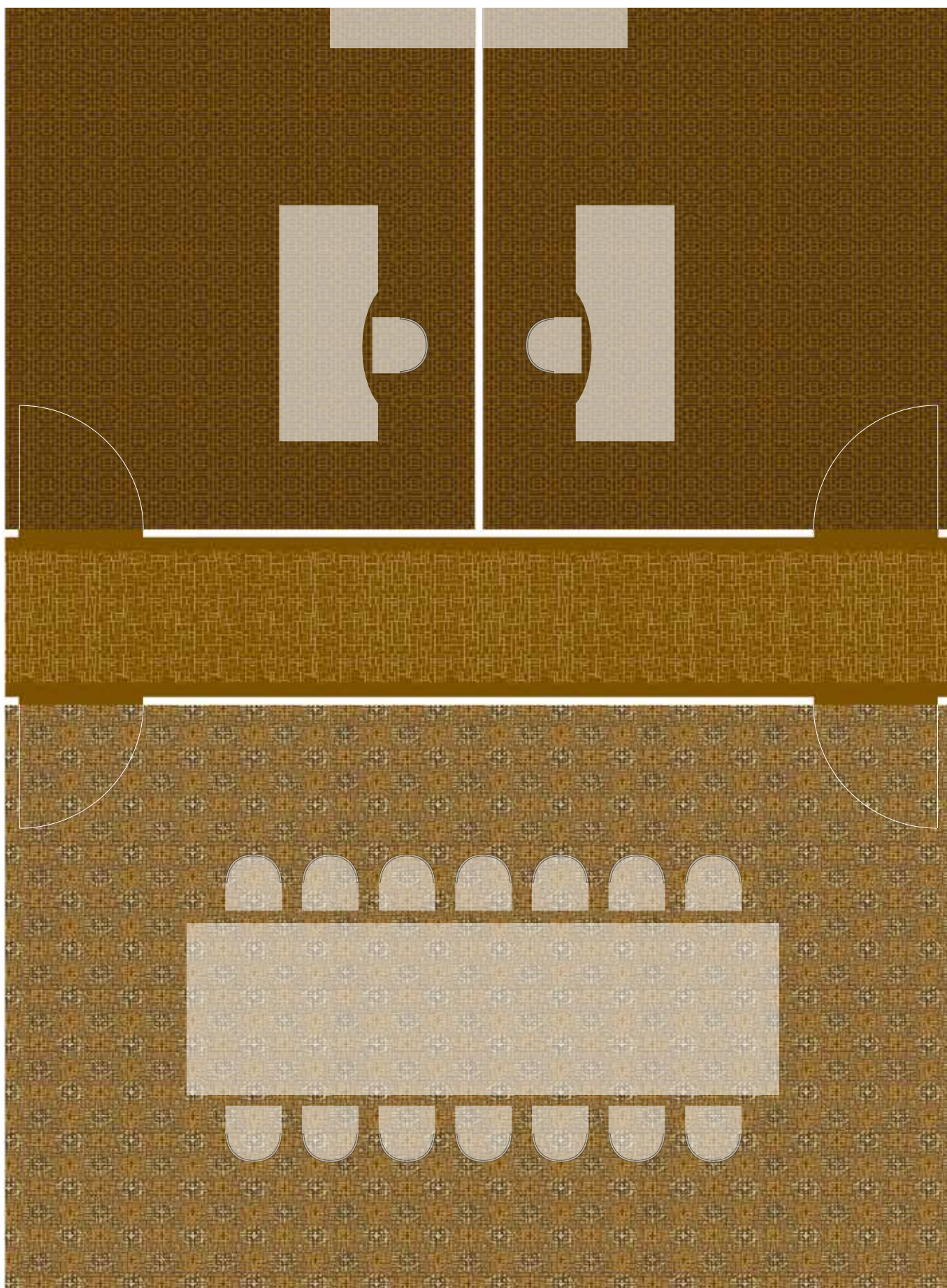


RF52752894 LACQUERED BOX GRID 
w: 48.8 cm x l: 38.1 cm

K5275



Floorscape inspiration



earth

Earth is the most feminine element and calls for stability and realisation. Symbolises every kind of earth that exists – from deep under us to the mountains high above. Dry earth and erosion patterns are the inspiration that stands for down-to-earth and unshakable qualities. Solid rocks symbolise stability, sincerity and modesty.



RF52752886 ROCKS

K5275



RF52752887 ROCK EROSION

K5275



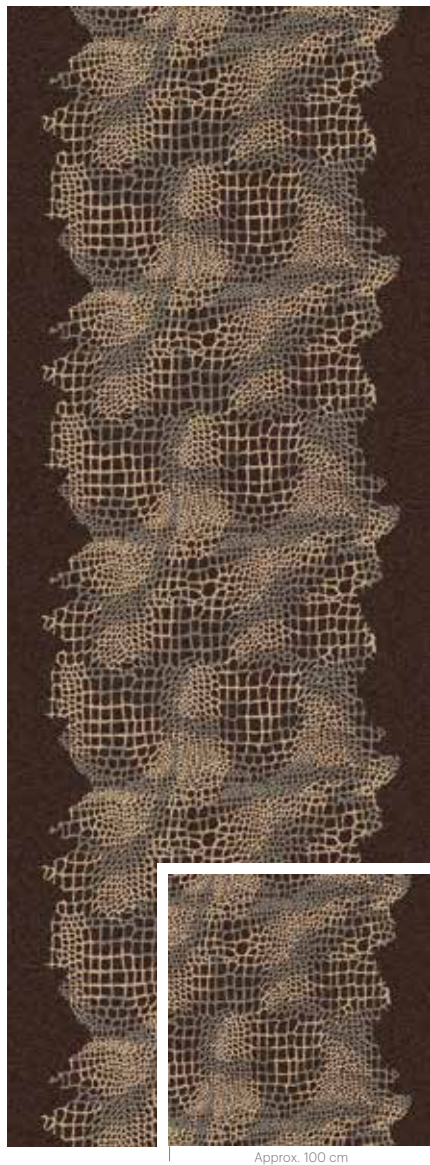
RF52752888 EROSION

K5275



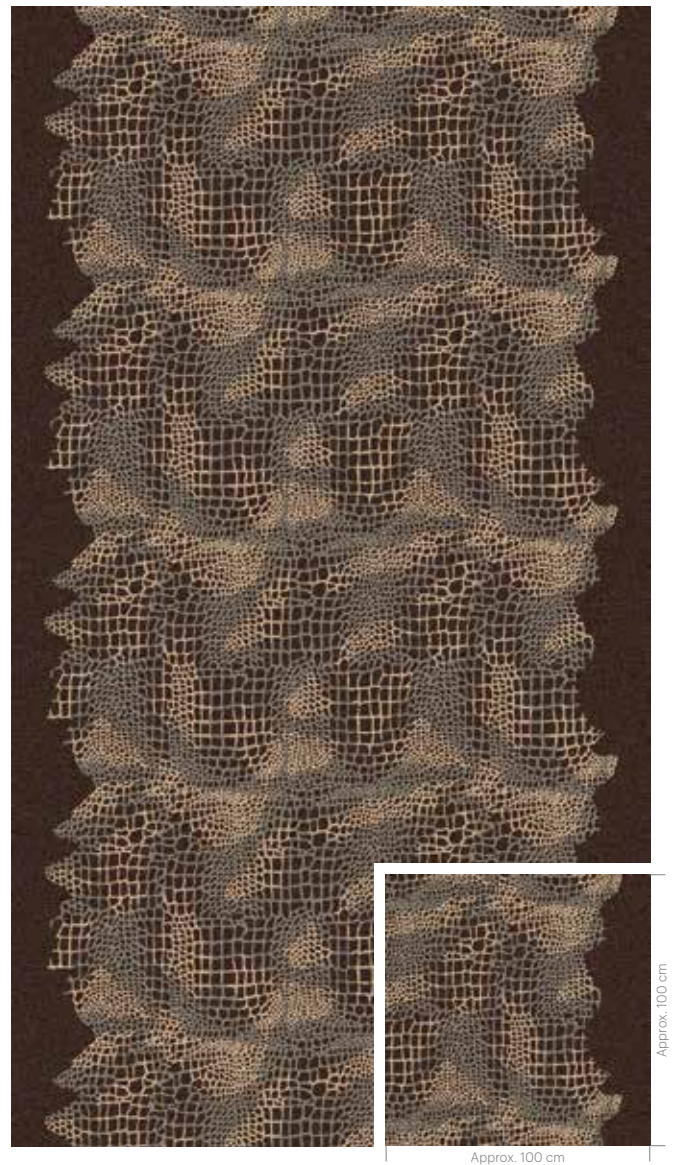
RF52752890 EROSION RUNNER
w: 130 cm x l: 76.2 cm


K5275



RF52752889 EROSION CORRIDOR
w: 195.1 cm x l: 76.2 cm


K5275



RF52752895 ROCKS 
w: 195.1 cm x l: 304.8 cm


K5275



RF52752891 ROCK EROSION 
w: 97.5 cm x l: 76.2 cm

K5275

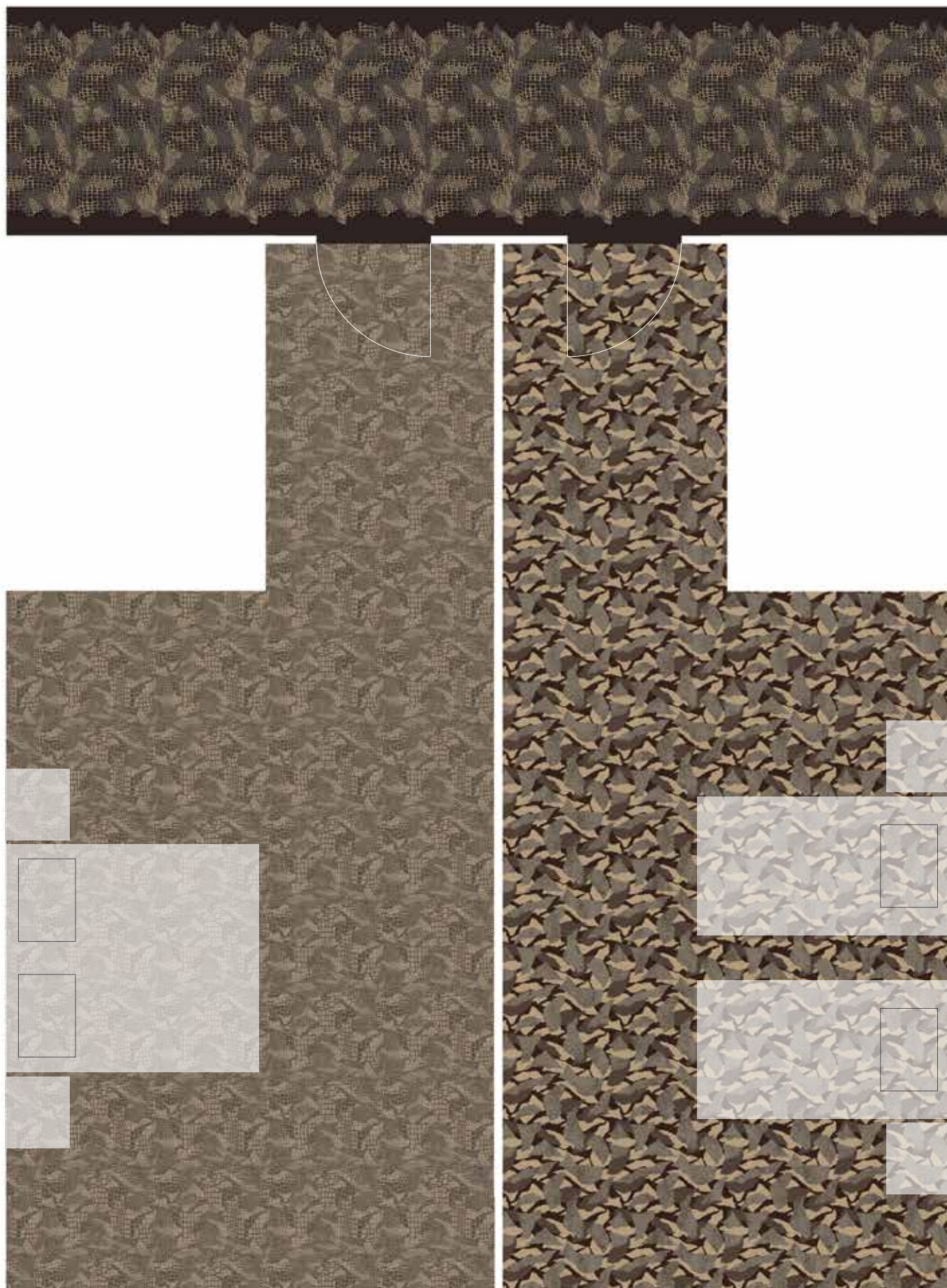


RF52752892 EROSION 
w: 195.1 cm x l: 304.8 cm

K5275



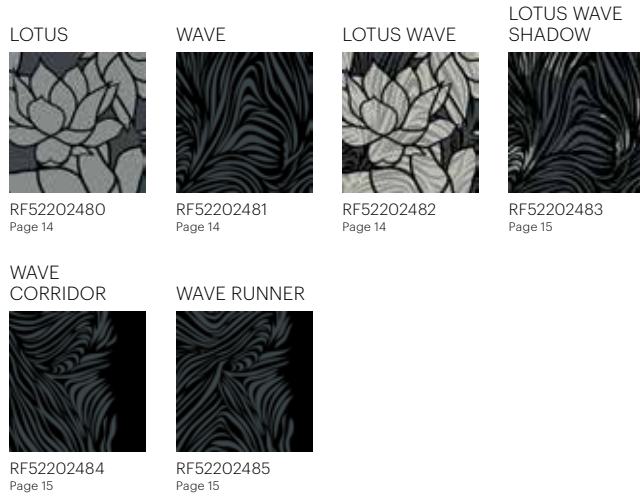
Floorscape inspiration





Collection overview

water



fire



wood



metal



earth



Colour palettes

colour palette 5220

| | | | | | | | | | | | |
|-----|--------|-----|--------|-----|--------|------|--------|------|--------|------|--------|
| GB1 | A20041 | GB2 | A20042 | GB3 | A20043 | GB4 | K20044 | GB5 | K20045 | GB6 | K20046 |
| GB7 | K20047 | GB8 | K20048 | GB9 | K20049 | GB10 | K20050 | GB11 | K20051 | GB12 | K20012 |

Accent Colours – for use in areas of max 10 x 10 cm

| | | | | | | | | | | | | | | | | | |
|------|------|------|------|------|------|------|------|------|------|------|------|------|------|------|------|------|------|
| AC43 | AC44 | AC45 | AC46 | AC47 | AC48 | AC49 | AC50 | AC51 | AC52 | AC53 | AC54 | AC55 | AC56 | AC57 | AC58 | AC59 | AC60 |
| AC61 | AC62 | AC63 | AC64 | AC65 | AC66 | AC67 | AC68 | AC69 | AC70 | AC71 | AC72 | AC73 | AC74 | AC75 | AC76 | AC77 | |

colour palette 5275

| | | | | | | | | | | | |
|-----|--------|-----|--------|-----|--------|------|--------|------|--------|------|--------|
| GB1 | K28328 | GB2 | K28329 | GB3 | K28378 | GB4 | K28374 | GB5 | K28366 | GB6 | K28364 |
| GB7 | K28380 | GB8 | K28379 | GB9 | K27886 | GB10 | K28360 | GB11 | K28367 | GB12 | K28368 |

Accent Colours – for use in areas of max 10 x 10 cm

| | | | | | | | | | | | | | | | | | |
|------|------|------|------|------|------|------|------|------|------|------|------|------|------|------|------|------|------|
| AC13 | AC14 | AC15 | AC16 | AC17 | AC18 | AC19 | AC20 | AC21 | AC22 | AC23 | AC24 | AC25 | AC26 | AC27 | AC28 | AC29 | AC30 |
| AC31 | AC32 | AC33 | AC34 | AC35 | AC36 | AC37 | AC38 | AC39 | AC40 | AC41 | AC42 | AC43 | AC44 | AC45 | AC46 | AC47 | |

colour palette 5285

| | | | | | | | | | | | |
|-----|--------|-----|--------|-----|--------|------|--------|------|--------|------|--------|
| GB1 | K28521 | GB2 | K28522 | GB3 | K28523 | GB4 | K28524 | GB5 | K28525 | GB6 | H28526 |
| GB7 | H28527 | GB8 | K28528 | GB9 | H28529 | GB10 | K28530 | GB11 | H28531 | GB12 | K20012 |

Accent Colours – for use in areas of max 10 x 10 cm

| | | | | | | | | | | | | | | | | | |
|------|------|------|------|------|------|------|------|------|------|------|------|------|------|------|------|------|------|
| AC13 | AC14 | AC15 | AC16 | AC17 | AC18 | AC19 | AC20 | AC21 | AC22 | AC23 | AC24 | AC25 | AC26 | AC27 | AC28 | AC29 | AC30 |
| AC31 | AC32 | AC33 | AC34 | AC35 | AC36 | AC37 | AC38 | AC39 | AC40 | AC41 | AC42 | AC43 | AC44 | AC45 | AC46 | AC47 | |

colour palette 5295

| | | | | | | | | | | | |
|-----|--------|-----|--------|-----|--------|------|--------|------|--------|------|--------|
| GB1 | K28601 | GB2 | K28602 | GB3 | K28603 | GB4 | K20012 | GB5 | H28605 | GB6 | K28606 |
| GB7 | K28607 | GB8 | K28608 | GB9 | K28609 | GB10 | K28610 | GB11 | H28611 | GB12 | H28632 |

Accent Colours – for use in areas of max 10 x 10 cm

| | | | | | | | | | | | | | | | | | |
|------|------|------|------|------|------|------|------|------|------|------|------|------|------|------|------|------|------|
| AC13 | AC14 | AC15 | AC16 | AC17 | AC18 | AC19 | AC20 | AC21 | AC22 | AC23 | AC24 | AC25 | AC26 | AC27 | AC28 | AC29 | AC30 |
| AC31 | AC32 | AC33 | AC34 | AC35 | AC36 | AC37 | AC38 | AC39 | AC40 | AC41 | AC42 | AC43 | AC44 | AC45 | AC46 | AC47 | |

Recolour options

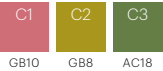
SELECT DESIGN

RF52752882



CHANGE COLOUR OF BACKGROUND (CHOOSE BETWEEN GB1-GB12)

EQ70522-100



CHANGE PATTERN COLOUR (CHOOSE BETWEEN GB1-GB12 AND ACCENT COLOURS)

EQ70522-101



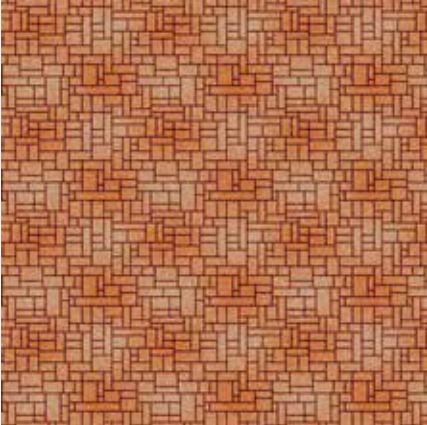
Colour inspiration

Challenge your creativity and recolour the designs to create your own, personal style. Make the colours fit perfectly to your surroundings by customising them exactly the way you want. Feel inspired.

RF52752901 GRID

K5275

w: 48.8 cm x l: 38.1 cm



C1

C2

C3

C4

GB9

GB2


GB12

GB11

RF52851889 CHRYSANTHEMUM DOUBLE

K5285

w: 390.1 cm x l: 304.8 cm



C1

C2

C3

GB11


GB12

GB10

RF52951937 LOTUS WAVE

K5295

w: 195.1 cm x l: 152.4 cm



C1

C2

C3

C4

C5

C6

C7

GB11

GB10

GB12

GB1

AC24


GB9

AC23

RF52752897 BAMBOO

K5275

w: 390.1 cm x l: 304.8 cm



C1

C2

C3

GB9


GB6

GB12

RF52752902 WAVE

K5275

w: 195.1 cm x l: 152.4 cm



C1

C2


GB10

GB12

RF52951938 ROCK EROSION

K5295

w: 97.5 cm x l: 76.2 cm



C1

C2

C3

C4

GB1

GB8


GB7

AC30

RF52951939 GRAPHIC BAMBOO

K5295

w: 390.1 cm x l: 304.8 cm



C1

C2

C3

GB2


GB8

AC27

RF52202487 EROSION

K5220

w: 195.1 cm x l: 304.8 cm



C1

C2

C3

C4

GB3

GB9


GB4

GB2

RF52951940 LOTUS WAVE SHADOW

K5295

w: 195.1 cm x l: 152.4 cm



C1

C2

C3

C4

GB7

GB8

GB6

GB5

RF52752898 LUCKY CLOUDS

K5275

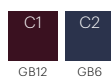
w: 390.1 cm x l: 304.8 cm



RF52752899 CHRYSANTHEMUM

K5275

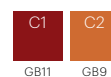
w: 390.1 cm x l: 304.8 cm



RF52752900 LACQUERED BOX

K5275

w: 48.8 cm x l: 38.1 cm



RF52752903 ROCKS

K5275

w: 195.1 cm x l: 304.8 cm



RF52202486 CHRYSANTHEMUM

K5220

w: 390.1 cm x l: 304.8 cm



RF52851890 LOTUS WAVE

K5285

w: 195.1 cm x l: 152.4 cm



RF52752904 LOTUS

K5275

w: 195.1 cm x l: 152.4 cm



RF52202488 LUCKY CLOUDS CHRYSANTHEMUM

K5220

w: 390.1 cm x l: 304.8 cm



RF52951941 EROSION

K5295

w: 195.1 cm x l: 304.8 cm






Technical specifications

Broadloom, corridors and runners

Fields of Flow is available in a number of qualities and sizes making the collection perfectly suitable for use in almost any interior design concept. Broadloom, corridor and runner design numbers are shown above each design.

Fields of Flow is developed in ege's standard colour palettes. Colour codes GB1-12 equal solid colours and colour codes AC equal blend colours. Only patterns using solely solid colours (GB1-12) are available in the qualities Highline 630 and Highline Loop E16. If you want a pattern using blend colours in Highline 630 or Highline Loop E16, this will require a production trial run prior to final production. The patterns containing blend colours are marked with this symbol  indicating that a trial run is necessary.

All this with:

- 5 unique design themes
- 18 standard all-over designs
- 5 standard corridors and runners
- Recolour options (see page 51)
- No minimum order requirements
- 8 standard qualities (see technical specifications pages 55-56)
- Undisputed performance standard EN 1307
- Performance classification to fit any need; heavy & extra heavy use
- 24-hour sample service (sample size 100 cm x 100 cm)
- Dispatch within 2 weeks from receipt of order

| Identification characteristics | Standard | Highline 80/20 1900 WT | Highline 80/20 1400 WT | Highline 80/20 1100 WT | |
|---|--|--|--|--|--|
| Construction | ISO 2424 | Tufted cut pile | Tufted cut pile | Tufted cut pile | |
| Pile material | DIR 96/73, 96/74 | 80% wool, 20% polyamide | 80% wool, 20% polyamide | 80% wool, 20% polyamide | |
| Colouration | - | Millitron | Millitron | Millitron | |
| Backing | eTL | WT – Woven textile | WT – Woven textile | WT – Woven textile | |
| Dimensions | ISO 3018 | Approx. 400 cm | Approx. 400 cm | Approx. 400 cm | |
| Gauge | ISO 2424 | 1/8 | 1/8 | 1/8 | |
| Total thickness | ISO 1765 | Approx. 10.0 mm | Approx. 8.5 mm | Approx. 8.0 mm | |
| Surface pile thickness | ISO 1766 | Approx. 7.5 mm | Approx. 6.0 mm | Approx. 5.5 mm | |
| Tufts | ISO 1763 | Approx. 167,000 per m ² | Approx. 137,000 per m ² | Approx. 120,000 per m ² | |
| Total carpet weight | ISO 8543 | Approx. 3,350 g/m ² | Approx. 2,900 g/m ² | Approx. 2,600 g/m ² | |
| Pile yarn weight | eTL | Approx. 1,900 g/m ² | Approx. 1,400 g/m ² | Approx. 1,100 g/m ² | |
| Surface pile density | ISO 8543 | Approx. 0.200 g/cm ³ | Approx. 0.170 g/cm ³ | Approx. 0.150 g/cm ³ | |
| edge soil protection | eTL | Yes | Yes | Yes | |
| Moth-proofed | eTL | Yes | Yes | Yes | |
| Performance characteristics | | | | | |
| Performance areas | EN 1307 | Class 33 – Commercial – Heavy | Class 33 – Commercial – Heavy | Class 32 – Commercial – General | |
| Castor chair suitability | EN 985 | - | - | - | |
| Suitability for use on stairs | EN 1963 | - | Yes | Yes | |
| Static control | eTL | Permanently antistatic | Permanently antistatic | Permanently antistatic | |
| Suitability for under floor heating | ISO 8302 | - | Yes | Yes | |
| Acou. insu. from impact noise | EN ISO 717-2/eTL | 29 dB | 31 dB | 27 dB | |
| Acoustical absorption | ISO 354/eTL | 0.30 aW | 0.25 aW | 0.25 aW | |
| Safety and environmental characteristics | | | | | |
| Fire classifications | IMO DK, MK D, DIBT AbZ. no CH, VKF/AEAI EN 13501-1 Euroclass | - Approved Z-156.601-479 C _{fl} -s1 C _{fl} -s1 | Certified Approved Z-156.601-479 C _{fl} -s1 C _{fl} -s1 | Certified Approved Z-156.601-479 B _{fl} -s1 B _{fl} -s1 | |
| Indoor air | DIM Certificate BASTA Emissions dans l'air intérieur GECA Green Label Plus | No. 006 Registered A+/A+ - Approved | No. 006 Registered A+/A+ - Approved | No. 006 Registered A+/A+ - Approved | |
| Environmental profile | Bre Byggvarudeklaration Environmental Product Declaration BREEAM-NOR LEED | - - - Qualified | - BVD 3 - Qualified | - BVD 3 - Qualified | |
| CE Labeling | EN 14041 Declaration of Performance | Certified DOP:9711-8C | Certified DOP:9711-8C | Certified DOP:9711-8B | |
| Manufacturer characteristics | | | | | |
| Quality management | ISO 9001 | Audited and verified by Bureau Veritas Certification | | | |
| Environmental management | ISO 14001 | Audited and verified by Bureau Veritas Certification | | | |
| Eco management | EMAS | Audited and verified by Bureau Veritas Certification | | | |
| Occupational Health & Safety | DS/OHSAS 18001 | Audited and verified by Bureau Veritas Certification | | | |
| Corporate Social Responsibility | DS 49001 | Audited and verified by Bureau Veritas Certification | | | |
| Carpet Recycling UK | Member | www.carpetrecyclinguk.com | | | |

For full technical specs and installation and maintenance guides see www.egecarpets.com

| | Highline 1100 WT | Highline 910 WT | Highline 750 WT | Highline 630 WT | Highline Loop WT |
|--|--|--|--|---|--|
| | Tufted cut pile | Tufted cut pile | Tufted cut pile | Tufted cut pile | Tufted loop pile |
| | 100% recycled polyamide | 100% polyamide | 100% polyamide | 100% polyamide | 100% polyamide |
| | Millitron | Millitron | Millitron | Millitron | Millitron |
| | WT – Woven textile | WT – Woven textile | WT – Woven textile | WT – Woven textile | WT – Woven textile |
| | Approx. 400 cm | Approx. 400 cm | Approx. 400 cm | Approx. 400 cm | Approx. 400 cm |
| | 1/8 | 1/10 | 1/8 | 1/10 | 1/10 |
| | Approx. 8.0 mm | Approx. 7.5 mm | Approx. 7.0 mm | Approx. 6.5 mm | Approx. 7.0 mm |
| | Approx. 5.5 mm | Approx. 5.0 mm | Approx. 4.5 mm | Approx. 4.0 mm | Approx. 4.0 mm |
| | Approx. 199,000 per m² | Approx. 222,000 per m² | Approx. 127,000 per m² | Approx. 230,000 per m² | Approx. 153,000 per m² |
| | Approx. 2,550 g/m² | Approx. 2,350 g/m² | Approx. 2,250 g/m² | Approx. 2,050 g/m² | Approx. 2,200 g/m² |
| | Approx. 1,100 g/m² | Approx. 910 g/m² | Approx. 760 g/m² | Approx. 630 g/m² | Approx. 680 g/m² |
| | Approx. 0.155 g/cm³ | Approx. 0.150 g/cm³ | Approx. 0.130 g/cm³ | Approx. 0.120 g/cm³ | Approx. 0.115 g/cm³ |
| | Yes | Yes | Yes | Yes | Yes |
| | - | - | - | - | - |
| | | | | | |
| | Class 33 – Commercial – Heavy | Class 33 – Commercial – Heavy | Class 32 – Commercial – General | Class 33 – Commercial – Heavy | Class 33 – Commercial – Heavy |
| | Continuous use | Continuous use | - | Continuous use | Continuous use |
| | Yes | Yes | - | Yes | Yes |
| | Permanently antistatic | Permanently antistatic | Permanently antistatic | Permanently antistatic | Permanently antistatic |
| | Yes | Yes | Yes | Yes | Yes |
| | 27 dB | 28 dB | 26 dB | 25 dB | 24 dB |
| | 0.20 aW | 0.20 aW | 0.20 aW | 0.20 aW | 0.20 aW |
| | | | | | |
| | - Approved Z-156.601-441 C _{fl} -s1 C _{fl} -s1 | - Approved Z-156.601-441 C _{fl} -s1 C _{fl} -s1 | - Approved Z-156.601-441 C _{fl} -s1 C _{fl} -s1 | Certified Approved Z156.601-441 C _{fl} -s1 C _{fl} -s1 | - Approved Z-156.601-440 B _{fl} -s1 B _{fl} -s1 |
| | No. 006 Registered A+/A+ Approved Approved | No. 006 Registered A+/A+ Approved Approved | No. 006 Registered A+/A+ Approved Approved | No. 006 Registered A+/A+ Approved Approved | No. 006 Registered A+/A+ Approved Approved |
| | ENP434 BVD 3 EPD-ege-2013103-CBC1-EN Approved with WTA backing Qualified | - BVD 3 - Approved with WTA backing Qualified | ENP434 BVD 3 - Approved with WTA backing Qualified | ENP434 BVD 3 - Approved with WTA backing Qualified | - BVD 3 - - Qualified |
| | Certified DOP:9711-4C | Certified DOP:9711-4C | Certified DOP:9711-4C | Certified DOP:9711-3C | Certified DOP:9711-14B |
| | | | | | |
| | | | | | |
| | | | | | |
| | | | | | |
| | | | | | |
| | | | | | |
| | | | | | |
| | | | | | |



THE URGE TO EXPLORE SPACE

www.egecarpets.com