

Create



Create: it's a small word but a really powerful one.

One that inspires the remarkable range of design possibilities that harmonise across our premium quality Signature Collection.

A word that matches your unique vision to the skills and expertise needed to deliver it. It's the word that comes before beautiful, original and enduring.

Create.

Amtico makes it possible.

Contents:

The Amtico Story	2
Quality Assurance	4
Made in Britain	6
Introducing Signature	8
Design Studio	10
New Product Innovation	14
Case Studies	40
Products	54
Wood	56
Stone	70
Abstract	82
Entryway	96
Laying Patterns	98
Bespoke	108
Feature Stripping	110
Borders	112
Motifs	114
Sustainability	116
Technical Information	118

Ever innovative, always original.

Collaboration is the essence of our adventure at Amtico. As designers, manufacturers, technologists and consultants we work closely together to pioneer the crafted design creativity, product innovation and service that has built our industry-leading reputation which continually sets our floors apart.





"We're industry leaders dedicated to creating flooring that's not only beautiful, but durable and sustainable. We work harder and work smarter, to give you expert support and outstanding service."

Jonathan Duck
Amtico CEO



Why choose Amtico?



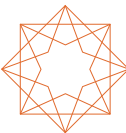
BRITISH EXCELLENCE

We're not just made in Britain, we're designed, innovated, and manufactured here. From our proud heritage comes an agile service and sustainable supply chain.



INSPIRING POSSIBILITY

An extraordinary range of products, palettes and patterns that give you the design choices to realise your creative vision.



PERFORMANCE ASSURED

Thanks to the exceptional quality and durability our manufacturing excellence brings, we're so confident in the performance of our products we offer a 20 year commercial warranty.



EXPERT KNOWLEDGE

The unrivalled knowledge, expert support and bespoke service you'd expect from a market leader with over 50 years experience.



Flawless, from design to delivery.

The enduring performance of our luxury vinyl tiles is reinforced by the pride we take in our work and our heritage as a British manufacturer. At the heart of our loyal customer relationships is a trust in our ability to make-to-order and deliver, the stylish, high quality floors our clients need.

Whatever you're looking for, it can be achieved through a unique combination of collaborative creativity, enduring performance and unrivalled expertise.

Amtico makes it possible.

Quality guaranteed, at every step.

From design to delivery, we take pride in rigorous testing and quality control. At every step of the Amtico process are trusted experts with specialist knowledge and industry experience. Our Quality System complies and is accredited against the internationally recognised standard of ISO 9001:2008.



20YR COMMERCIAL
WARRANTY

**43 product
assurance
checks.**

13

manufacturing checks, including colour, audit traceability and component specification.

12

finishing checks including gauge, bevelling and packaging.

18

post production checks including adhesion, wear layer thickness and curl testing.



PERFORMANCE
ASSURED

Thanks to the exceptional quality and durability our manufacturing excellence brings, we're so confident in the performance of our products we offer a 20 year commercial warranty.



Trusted Experts.

Every member of the Amtico team is responsible for quality. We strive for perfection: that's what helps us to continually improve and stay market leaders. Our trusted experts are driven to lead industry standards for product and service. It's our collective passion for flooring that leads to long term customer relationships and a long-serving, experienced workforce.

"We supply a full service, not just a floor. From the highest quality raw materials to our next day direct delivery service we're focused on continually improving our process. Our reputation is built on a team that takes pride in crafting extraordinary products of exceptional quality."



Gary Wilson
Head of Technical

Made in Britain

British made, world leading.

For over 50 years we've been combining design creativity with the highest levels of quality in manufacturing and service at our base in the UK.





We're proud to be designed, innovated and manufactured in Britain.

This means our team can work together to push the boundaries of flooring by experimenting with products and techniques, sharing skills and expertise. Collaborating to create products that are both beautiful and technically excellent. Products you can trust because they are made with pride.

Trust in the enduring performance of our products, our agile service and sustainable supply chain sits at the heart of our loyal customer relationships. Relationships managed by our expert customer services team who look after your project with care every step of the way.



"We work together to create skillfully engineered products that combine incredible aesthetics with outstanding technical performance."

Andy Haskayne
Head of European Manufacturing



BRITISH
EXCELLENCE

We're not just made in Britain, we're designed, innovated, and manufactured here. From our proud heritage comes an agile service and sustainable supply chain.





An extraordinary collection.

Signature is our flagship collection of 163 products: 69 Woods, 43 Stones and 51 Abstracts.

This sophisticated collection combines original palettes, distinctive patterns and stunning details. The design-led, high-performance LVT products have a total thickness of 2.5 mm and a 1 mm wear layer.

It's this combination of style and function that makes the Signature Collection beautifully versatile for projects across a wide range of commercial sectors, from healthcare to education, retail to hospitality and leisure.

Collection innovations.

For this new collection we've created fresh palettes grouped around tone and texture. We've introduced a wider range of cool tones throughout and developed beautiful new designs focused on versatile colour blends.

With new innovation products and an exclusive collection of Designers' Choice laying patterns, Signature is a collection to inspire and excite.

Explore

Original.

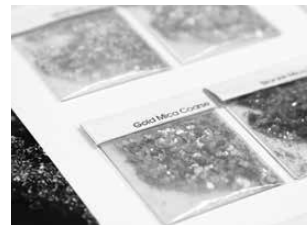
Dedicated to design innovation.

At Amtico we're dedicated to original design. We're driven by imagination, curiosity and creativity. We don't think there's a template for good design. Our process is considered and robust, but also organic and collaborative.



We take risks, travel the globe for inspiration and stay ahead of trends. That's why we can create truly original floors. Extraordinary designs for you to explore and combine in infinite ways.

Our shared design philosophy means we can create designs and palettes that work across collections, giving you the freedom to experiment. To move seamlessly between patterns, tones, textures and even materials across an inspirational range of designs.



1

team, a diverse range of experience and design insight, from automotive and multimedia, to knitwear and surface pattern.



INSPIRING POSSIBILITY

An extraordinary range of products, palettes and patterns that give you the design choices to realise your creative vision.



"We want the products we design to excite your imagination, bring new possibilities and give you the freedom to design."

Lorna Williams
Head of Product Design
and Creative Branding

New product innovation.

Breakthrough innovation
products Umbra and Chroma
and new statement designs for
our Wood and Stone palettes.

Umbra

Umbra is original, dramatic and breathtaking. Beautiful shadows, sophisticated curves and organic layers deliver soft flow to open areas and intense drama to intimate spaces. The unique non-repeating pattern makes Umbra a breakthrough development for the industry.

Flow
Shadow
Curves
Motion
Drama
Umbra





Umbra Dusk – Broken Bond

A beautifully layered abstract pattern that flows easily across tiles and planks.

►
Umbra Eclipse
Code: AR0AUA33

Intense curves of deep black, smoke blue and charcoal grey unite in a dramatic flow of organic layers, expressing a new style of bold beauty.



"Umbra is a layered abstract pattern available in three monochromatic colourways that flow easily across tiles and planks. Dramatic tonal mixes and clever colour balance makes Umbra an exciting and highly usable product."

Karen Quarterman
Design Manager

►
Umbra Dusk
Code: AROAUA24

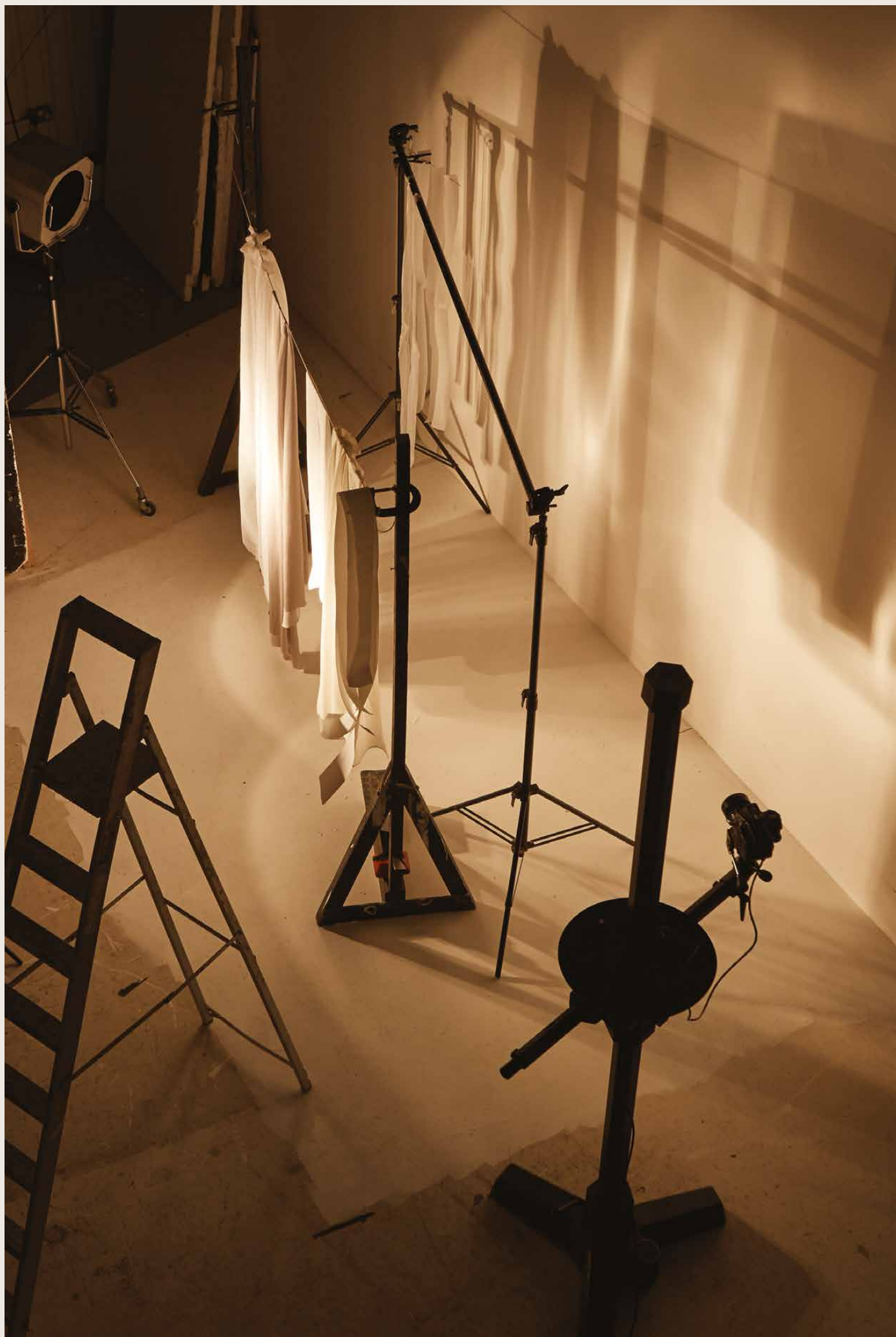
Drifting tones
of warm oyster
and deep grey are
gently interrupted
by furrows of
soft granite,
building captivating
flow and
calm movement.



◀
Umbra Veil
Code: AROAUA13

Smooth contours
of cool pale blue
and warm dove
grey delicately
contrast to
produce beautiful
soft folds of light
and shade.





The Umbra Story

Analogue photography, darkroom processes and the movement of light are the inspiration behind the innovation that created beautiful Umbra.

► Folding papers, pleating fabrics and projecting light influenced the organic shadows, curves and layers of Umbra.



Q&A with Karen Quarterman, Design Manager.

What's different about Umbra?

KQ. Umbra is a breakthrough development. We've designed it completely in-house and harnessed technology that allows us to capture pattern movement, which means no two tiles are the same.

What inspired you to create the product?

KQ. We wanted to create an entirely non-replicative design, something abstract that captured light and shadow; the beautiful motion, drama and shape-shifting qualities of light through space.

How did the concept evolve?

KQ. We returned to the darkroom to use analogue photographic methods and played with different historical craft techniques, folding papers, pleating fabrics and combined all these together to create a rolling non-repeating visual. It was then about using innovative technology to evolve this concept to get to the final result.

How did you develop the colourways?

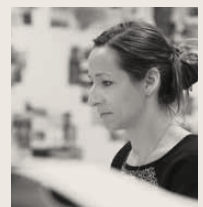
KQ. Umbra's beauty lies as much in its usability as innovation. We wanted to push the boundaries but create a versatile product. That's why we've used monochromatic

tones to create three highly useable grey colourways that offer a beautiful balance of warm and cool tones.

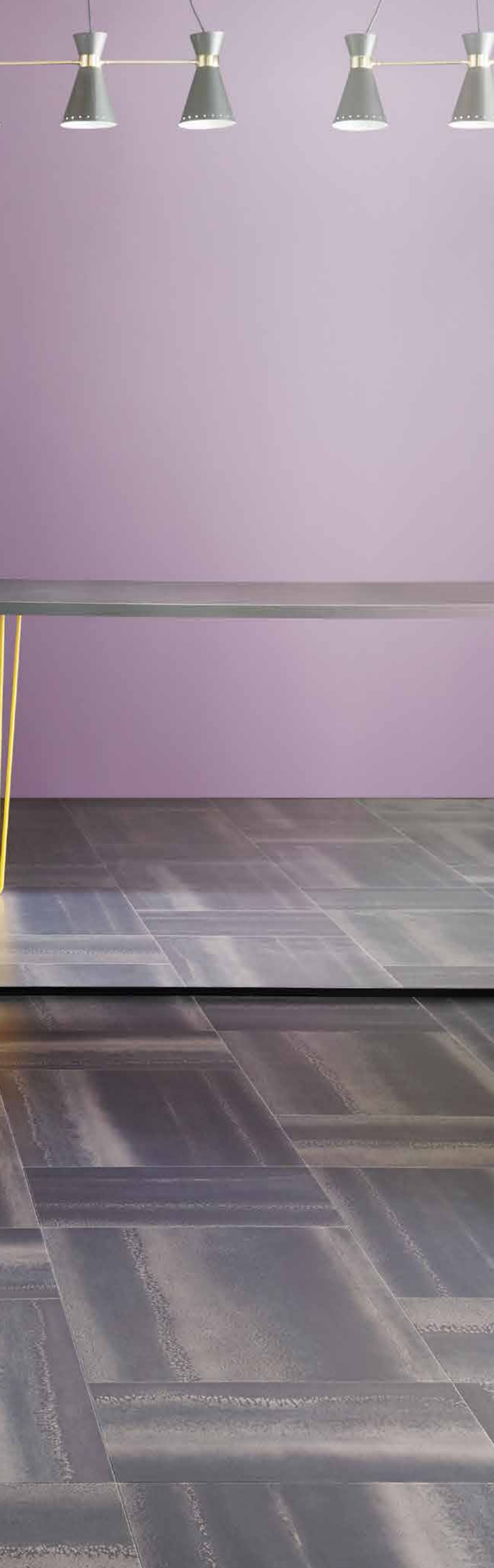
What spaces will Umbra work best in?

KQ. Umbra captures light and mood, shade and drama in a very sophisticated way, it offers something totally unique to projects. It can feel very light and airy in a large space, flooding it with flow and softness, in a smaller space it can be really dramatic and intense.

Q&A
Karen Quarterman
Design Manager







Innovation Product

Chroma

Bold graphic texture and a striking new metallic finish make this contemporary trio an exciting addition to the Signature Collection. Use across a whole space for a dramatic look or create a stunning feature highlight.

Bold
Metallic
Graphic
Depth
Texture
Chroma



◀
Chroma Black
Code: AR0ACH22

Lustrous silver highlights graduate intricately across a deep black base to produce a delicately reticulated texture and subtle modern beauty.

▶
Chroma Blue
Code: AR0ACH99

Lapis blue, inky black, gold and silver collide in a metallic oxidised landscape to create sensitive flowing layers and a contemporary decorative finish.



Multi-tonal metallic inks and organic texture across three colourways.

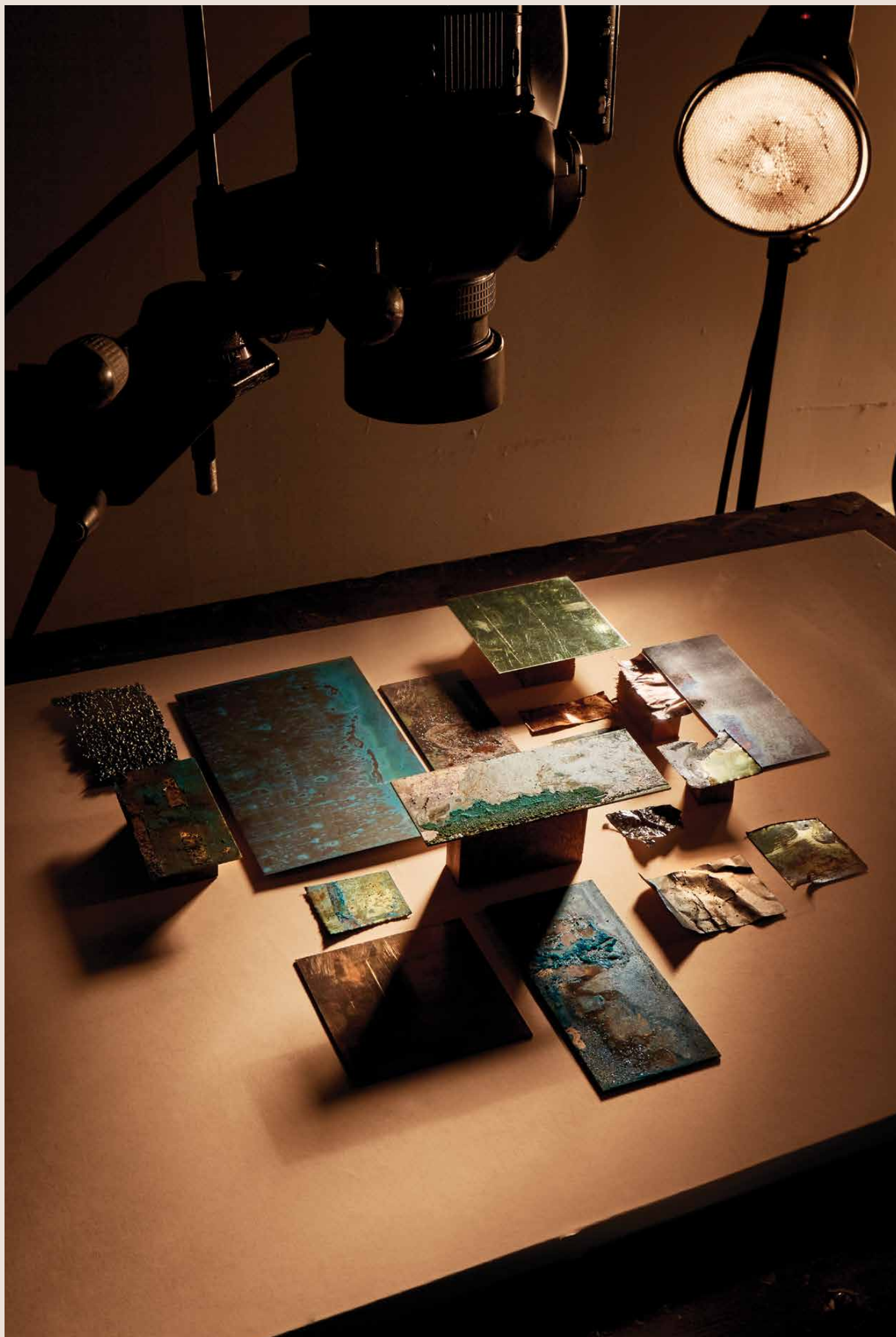


◀
Chroma Gold
Code: AR0ACH79

Sophisticated layers of burnt amber, rose gold and warm copper build a dramatic metallic terrain, alive with intense texture, depth and movement.

"Chroma is a large-scale textured print that uses multi-tonal metallic inks across three colourways. From bold Chroma Gold to sophisticated Chroma Black, the layered textures and beautiful reticulated edges create stunning depth and a striking finish."

Kelly Alders
Senior Designer



The Chroma Story

Q&A with
Kelly Alders,
Senior Designer.

Where did the inspiration for Chroma come from?

KA. We were intrigued by the shift in furniture, interior architecture and fashion towards metals with a more textured finish and deep, rich tones.

What happened next?

KA. We researched lots of metallic effects, ceramic glazes and decorative rust finishes looking at how pigments had merged and dispersed together to create lots of tonal movement and texture.

How did Chroma develop from this?

KA. We discovered how to capture the bold oxidised qualities found in these manipulated metals and then used our print expertise to enhance this and highlight the details. It was about exploring the printing itself and how we could emulate these qualities as closely as possible to create an illusion of depth in the product.

Was this all created digitally?

KA. We created initial exploration artworks by hand. This helped us capture the natural

movement created by dripping and spraying paint and using beautiful inks to layer tone and movement across mixed materials. We then used hand-drawn surface pattern techniques to create the intensely detailed designs.

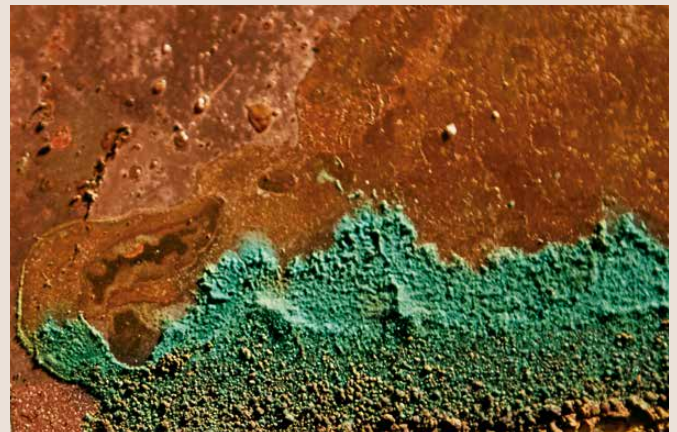
How do you see Chroma being used?

KA. Chroma has this fantastic bold graphic texture which means you can use it entirely on its own to give a space a really dramatic look or you can use it as a highlight within simpler product – it's a really exciting addition to the Signature Collection.

Q&A
Kelly Alders
Senior Designer



Chroma's tonal layers, beautiful depth and detailed texture take their design cues from oxidised surfaces, metallic terrains and ceramic glazes.



◀ Manipulated metals, burnished glazes and painted surfaces inspired the bold texture and intense layers of Chroma.





New Stone Product

Kura

Elegant ceramic-like texture, varying from smooth to organic, and clever colour balance combine to create incredibly versatile products that work together beautifully.

The soft rustic texture of Kura Cassia and the subtle deep-dyed Kura Anise and Kura Juniper look stunning in large-scale patterns such as Polygon Key.

New Stone Product

Organic Refined Delicate Balance **Kura**



"Contemporary Kura is a family of versatile Stones that deliver understated beauty."

Kelly Alders
Senior Designer



►
Kura Caraway
Code: AR0SKU38

Contrasting grey-taupe and steel tones deliver a contemporary treated texture and striking metallic finish.



▲
Kura Kala
Code: AR0SKU31

Delicately featured Kura Kala brings a refined authentic ceramic style, a cream base with soft highlights emits effortless beauty.



◀
Kura Cassia
Code: AR0SKU41

A blend of dusty tones combine to create a smooth finish, reminiscent of antique linens and silk rugs.



►
Kura Juniper
Code: AR0SKU42

Soft grey, botanical mauve and deep brown tones are expressed through a subtle rustic texture, yielding a rich warmth like worn velvet.



▲
Kura Fennel
Code: AR0SKU34

Graceful soft pitting in warm chalky grey tones forms an organic natural backdrop that flows smoothly through large spaces.



◀
Kura Opium
Code: AR0SKU49

Beautiful shades of blue-black and charcoal pool like ink to give Kura Opium a rich tapestry and dramatic intensity.



►
Kura Anise
Code: AR0SKU39

A heroic colour blend of warm grey and soft amethyst creates clever texture in a subtle deep dyed fabric effect.







New Wood Product

Washed Woods

Mysterious and beautiful, the large-scale grain in these two new design-Woods is given a sophisticated aesthetic with soft washes of colour.

Glorious tones flowing through a classic oak grain make Ink and Pearl Wash Wood a lustrous new take on the natural.



Mysterious Captivating Modern Lustrous Washed Woods

Ink Wash Wood Code: AROW8230

Rich ink and deep indigo tones dash through a flowing oak grain to build shimmering painterly movement and a contemporary treated finish.



Pearl Wash Wood Code: AROW8220

Smoky tones of grey-blue and putty glide through a flowing oak grain to build shimmering painterly movement and a contemporary treated finish.

"Inspired by tinted washes on classic grains and the captivating beauty of ink and smoke dispersing in water."

Kelly Alders
Senior Designer



Case studies.

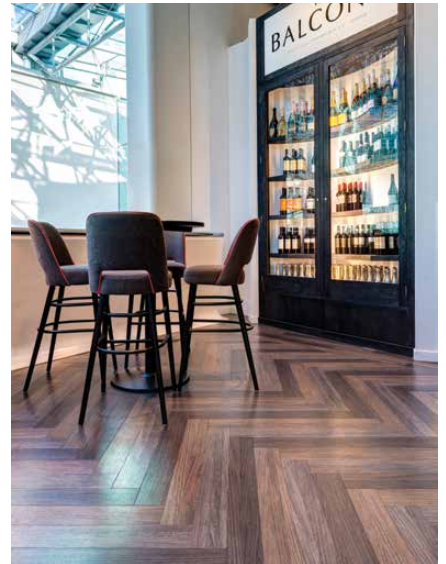
Explore how the Signature Collection has been used to create distinctive, inspiring and welcoming spaces across a diverse range of projects and sectors.

Location: Birmingham, UK
Sector: Hospitality & Leisure
Products & Laying Patterns: Quill Sable,
Quill Kohl, Quill Gesso, Stripwood – laid Herringbone

Selfridges needed a distinctive and luxurious floor for its new restaurant in the Bullring, one of Birmingham's most iconic buildings.



The in-house team worked with hospitality designers Harrison Design to create an elegant and striking Herringbone pattern using standard planks of Quill in Sable, Kohl and Gesso.



3

beautifully contrasting wood grains created a dynamic look.

LVT

flooring for high-traffic performance, durability and easy maintenance.

"With the time restraints we were under to complete the new-look restaurant, it was apparent that using Amtico meant a quick, easy and clean installation. Using a quality vinyl product from the Signature range allowed us to create a bespoke, opulent design that was perfect for the space."

Andrew Kirk
Leading Architect and Director,
Harrison Design

FED Restaurant

Location: Cardiff, UK

Sector: Hospitality & Leisure

Products & Laying Patterns: Pier Oak, Quill Gesso, Forge Oak, Script Maple Rum and Vintage Chestnut, Stripwood. Blonde Oak, Parquet. Glint Orb, Glint Void, Woven. Stria Volcanic, Flagstone

A new 300-seater, two storey specialist restaurant required a high quality flooring solution across distinct zones to reflect the diverse cuisine on offer.



Clever combinations of colours, textures and patterns from Signature Wood, Stone and Abstract palettes created vibrant spaces and a truly individual scheme.



"We wanted to have a high quality finish but, at the same time, use reclaimed and retro materials. The restaurant zoning was critical to the success of the design, and we're really pleased with how mixing the products and laying patterns has helped to complete the overall restaurant look."

Jane Verity-Smart
Interior Designer,
Via Interiors

5,000

covers a week called for high-quality durable flooring.



Location: Swindon, UK
Sector: Office
Products & Laying Patterns:
Exposed Concrete,
Standard Tile, Bespoke

The iconic Groundwell building, former home of Motorola, needed a new look following its acquisition by medical and surgical device firm Vygon for their UK subsidiary.





3Sphere were appointed to work on the interior design and the quality and durability of Amtico flooring was an essential element of the scheme.

The new headquarters needed to reflect the Vygon brand so first class finishes were crucial. Refined Concrete has been combined with Exposed Concrete to create a pared back authenticity and help denote spaces.

"When Amtico Signature was presented with the added benefits; quieter acoustics, easy maintenance and overall quality, it was seen as the perfect choice.

Vygon were extremely pleased with the end result, not only were they delighted with the new bright and warming feel of the space, but they also felt reassured with the 20 year warranty that's standard with Amtico Signature flooring."

Barry Macken
Leading Architect and Director,
3Sphere

Ibis Hotel

Location: Liverpool, UK
Sector: Hospitality & Leisure
Products & Laying Pattern:
Dark Walnut, Parquet



Architecture firm Falconer Chester Hall required a sophisticated high performance floor to complement their vibrant vision for IBIS Liverpool.

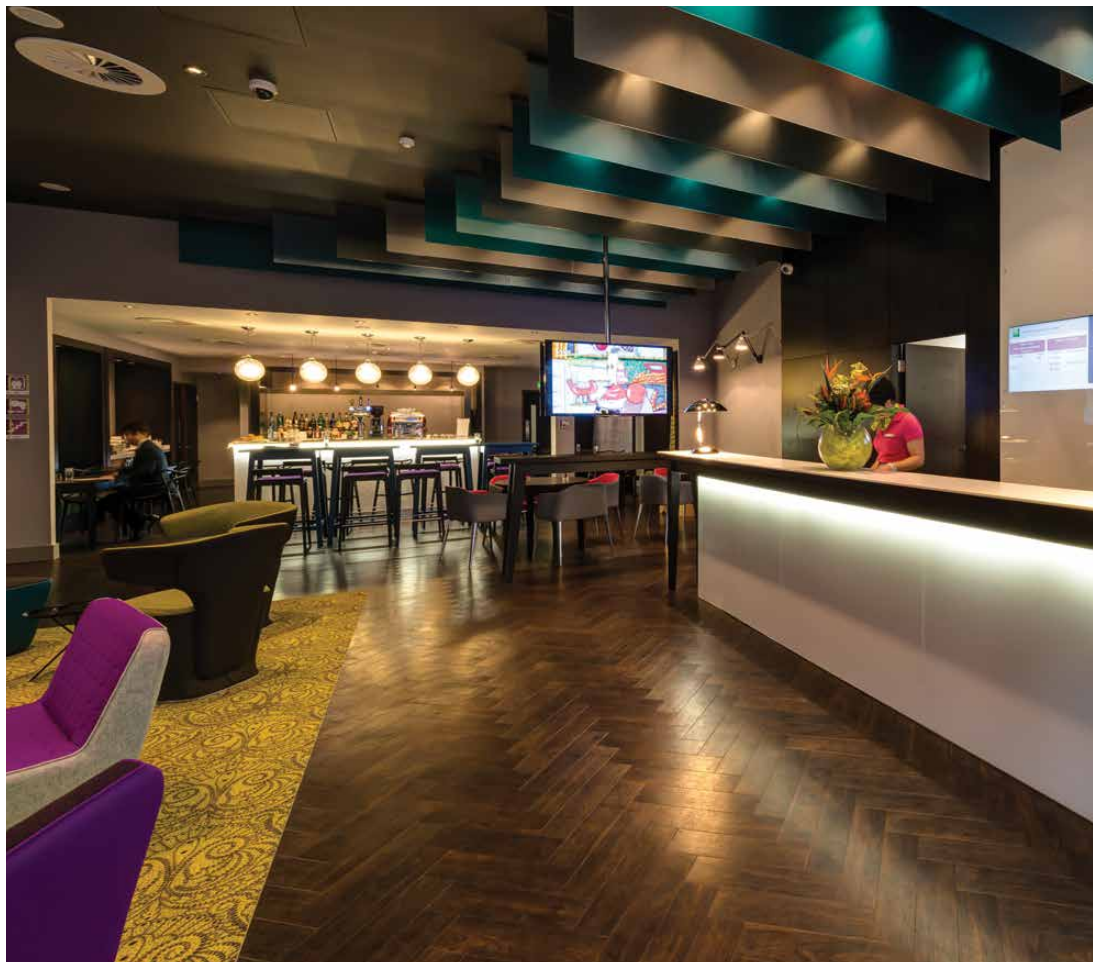


20YR COMMERCIAL
WARRANTY

"Having a long commercial warranty was a bonus for such a fantastic looking floor in a high footfall environment. Our client is really happy with the final result, as are we."

Anna Farrelly
Lead Designer,
Falconer Chester Hall

Signature Dark Walnut was the perfect fit, and is used throughout the reception and bar area in a beautiful Parquet pattern. Rich and warm, the floor works alongside iconic furniture, splashes of colour and modern lighting to create a vibrant environment.



Zahngesundheits-Zentrum Rauschenbach Dental Practice

Location: Eisligen, Germany

Sector: Healthcare

Products & Laying Patterns:

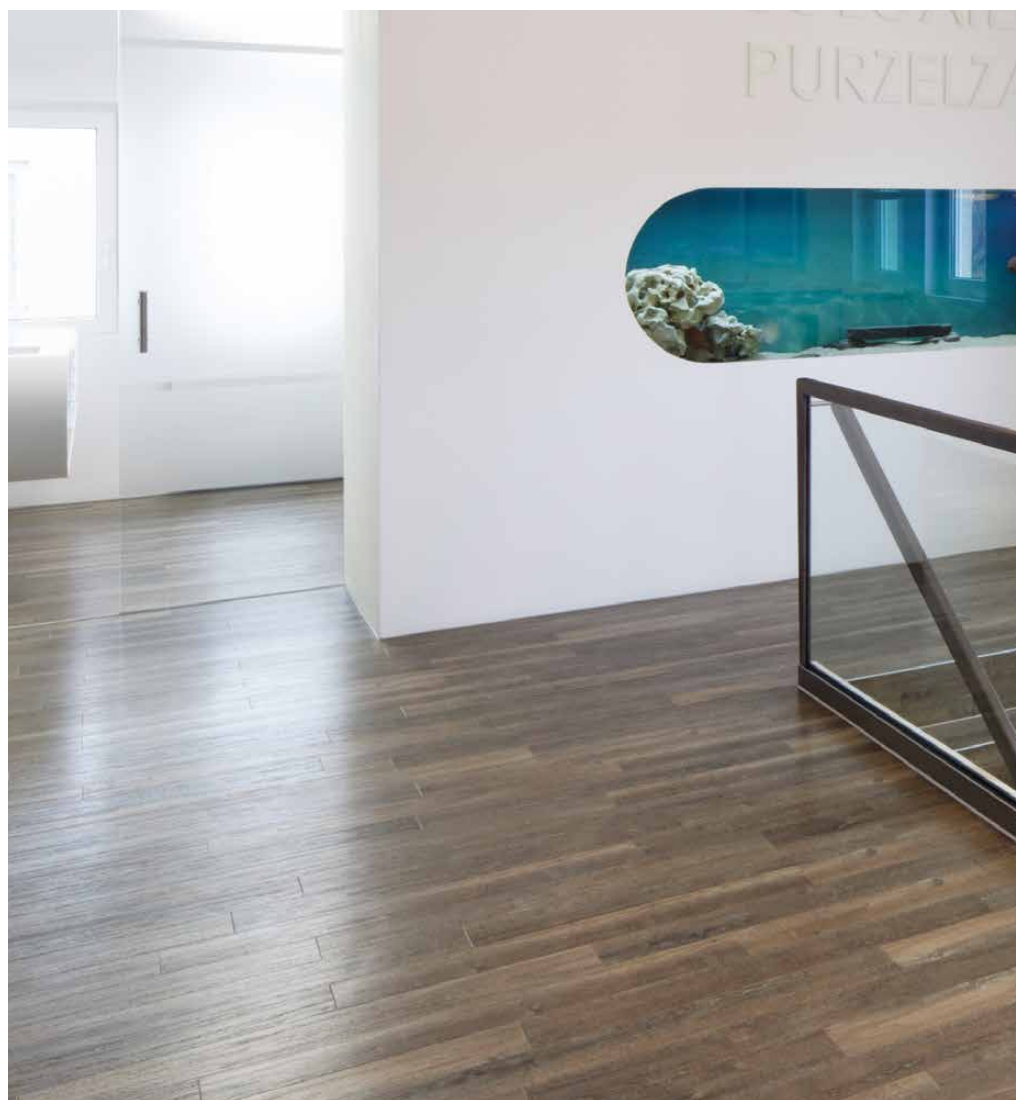
Aged Oak, Stripwood



© by Künstlerin Barbara
Rauschenbach (Individuart)



A welcoming space that combines function with contemporary style was the brief for Zahngesundheits-Zentrum Rauschenbach.



ZWP Design Award

12:43 Architekten chose the reclaimed wood effect of Signature Aged Oak to bring a real warmth to a scheme that was nominated for ZWP Design Best Dental Practice in Germany award 2012.

"We were impressed by the amazing quality of the product, the large range of designs in comparison to other competitors in the market and the great support from Amtico."

Steffen Bucher

Architect,
12:43 Architekten

Location: Reading, UK
Sector: Education
Products & Laying Patterns:
Equator Flow, Stripwood

The University of Reading Library needed a modern look that worked sensitively with original features and had strong acoustic qualities.



Architects Stride Treglown used linear Equator Flow to create warm movement across zoned spaces throughout the project.



A⁺

All products meet BRE and sector sustainability standards.

1mm

Performance wear layer, ideal for high traffic areas.

"Student feedback has been overwhelmingly positive with the library's own Twitter account having some great responses from students."

Kenton Simmons
Senior Interior Designer,
Stride Treglown

What's important to you, is important to us.

Retail
Healthcare
Education
Residential
Hospitality
Leisure
Commercial
Housing
Office
Government
Public Space
Transport



Architect: Blocher Blocher Partners.
Photo: Fabian Hild.

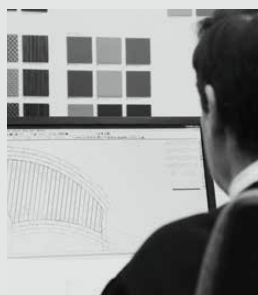
Across the wide range of sectors we work with, our service is underpinned and defined by thorough attention to the details that matter most to you. You'll be allocated a dedicated advisor with extensive experience in your sector, so at every stage of our collaboration we'll be talking your language.

Explore a wide range of case studies across all sectors at amtico.com/commercial/inspiration

Trusted experts at every step.

Our unrivalled knowledge, lifetime of experience and dedicated team makes the difference. That's why we're a market leader and the choice of designers, architects and developers across the globe.

We've got a trusted in-house team dedicated to original design and product innovation with over 50 years industry experience.



EXPERT
KNOWLEDGE

The unrivalled knowledge, expert support and bespoke service you'd expect from a market leader with over 50 years experience.

We're ready to bring your vision to life. Get in touch and discover the Amtico difference at **amtico.com**

The Signature Collection.

Select any design from our
extensive collection of products.
Use them individually or mix
together in endless combinations
for a truly unique floor.

163 products:
69 Woods
43 Stones
51 Abstracts

Total thickness: 2.5 mm
Wear layer: 1 mm
Bevel as standard



20YR COMMERCIAL
WARRANTY





Grain
Contours
Detail
Texture
Colour
Wood

Cool



White Wash Wood
AROW7680



Cirrus Air
AROW8100



Limed Grey Wood
AROW7670



Cirrus Mist
AROW8110



Pearl Wash Wood
AROW8220



Nomad Oak
AROW8140



Shore Oak
AROW8180



Shibori Jasmine
AROW7800



Wharf Oak
AROW8190



Chateau Oak
AROW7980



Cirrus Shadow
AROW8080



Harbour Pine
AROW7990



WOOD - COOL





Chalked Pine
AROW7750



Cornish Oak
AROW8150



Lime Washed Wood
AROW7660



Neutral Pine
AROW7770



Parisian Pine
AROW7860



Salted Oak
AROW8210



Cirrus Dawn
AROW8070



Manor Oak
AROW7970



Pilgrim Oak
AROW8130



Classic Walnut
AROW7610



Fumed Oak
AROW7900



Regency Walnut
AROW8200

Golden



Sugar Maple
AROW8020



Fused Birch
AROW7500



White Oak
AROW7520



Fresh Oak
AROW7440



Natural Limed Wood
AROW7690



Golden Oak
AROW7510



Light Cherry
AROW7060



Classic Oak
AROW7430



American Oak
AROW7050



Applewood
AROW7740



Grande Pecan
AROW7850



WOOD - GOLDEN

Chalked Pine, White Oak - Offset Plank



Varnished Oak – Stripwood



Oiled Pine
AROW7760



Blonde Oak
AROW7460



Worn Oak
AROW7390



York Oak
AROW8160



Aged Oak
AROW7710



French Oak
AROW7830



Brushed Oak
AROW7910



Dry Teak
AROW7810



Farmhouse Oak
AROW7630



Varnished Oak
AROW7840

Rich



Washed Teak
AROW5990



Ashdown Plum
AROW8000



American Cherry
AROW7450



Vintage Teak
AROW7600



Teak
AROW6990



Priory Oak
AROW7200



Merbau
AROW7590



Antique Wood
AROW7190



Rosewood
AROW7070



Wild Walnut
AROW7620



Wenge Wood
AROW7490



Dark Walnut
AROW7700



WOOD - RICH





Quill Sable
AROW8040



Galleon Oak
AROW8170



Reclaimed Oak
AROW7870



Quill Gesso
AROW8060



Pier Oak
AROW7890



Ink Wash Wood
AROW8230



Script Maple Silver
AROW8120



Quill Kohl
AROW8050



Shibori Sencha
AROW7780



Shibori Lapsang
AROW7790



Script Maple Rum
AROW7920



Cirrus Twilight
AROW8090





Elegant
Organic
Confident
Serene
Opulent
Stone

Pale



Honed Limestone Natural
AROSLH11



Mirabelle Creme
AROSMB14



Basilica Salt
AROSBS12



Basilica Shale
AROSBS31



Fossil Limestone
AROSFL33



Alchemy Haze
AR0AAL14



Mirabelle Bleu
AROSMB34



Jura Grey
AROSJA34



Kura Kala
AROSKU31



STONE - PALE





Limestone
AROSLK14



Crema Marfil
AROSMF47



Riverstone Chalk
AROSRS14



Jura Yellow
AROSJA75



Travertine Honey
AROSTV32



Riverstone Tundra
AROSRS40



Stria Sediment
AROSMS14



Travertine Romano
AROSTV33



Stria Sand
AROSMS47

Neutral



Kura Fennel
AROSKU34



Stria Basalt
AROSMS43



Kura Cassia
AROSKU41



Lulworth Stone
AROSST41



Stria Rock
AROSMS33



Kura Juniper
AROSKU42



Buckland Stone
AROSST42



Cadence Dune
AROSPB44



Stria Lava
AROSMS44



STONE - NEUTRAL





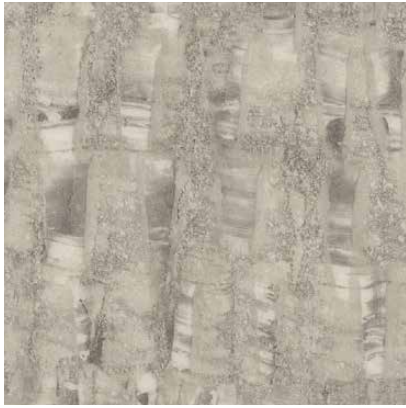
Stria Ash
AROSMS13



Basilica Shell
AROSBS41



Worn Concrete
AROSTL39



Alchemy Atmosphere
AROAAL30



Kura Caraway
AROSKU38



Doric Marble
AROSTV14



Exposed Concrete
AROSEC30

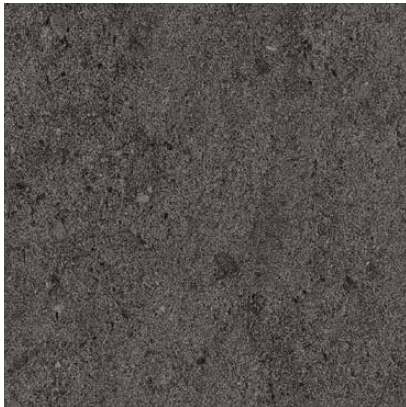


Kura Anise
AROSKU39

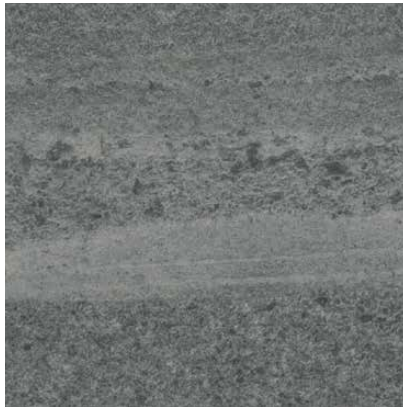


Cadence Aeria
AROSPB31

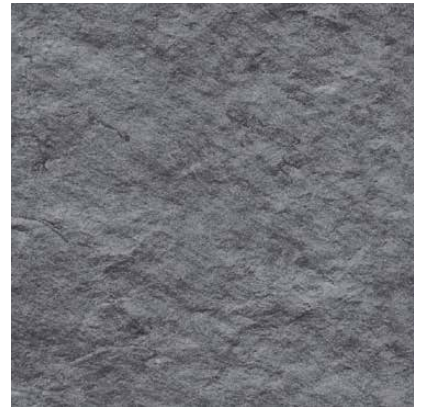
Dark



Stria Volcanic
AROSMS42



Cumbrian Slate
AROSSL32



Welsh Slate
AROSSL21



Alchemy Storm
AROAL20



Cadence Montis
AROSPB22



Kura Opium
AROSKU49



Graphite Slate
AROSSL23

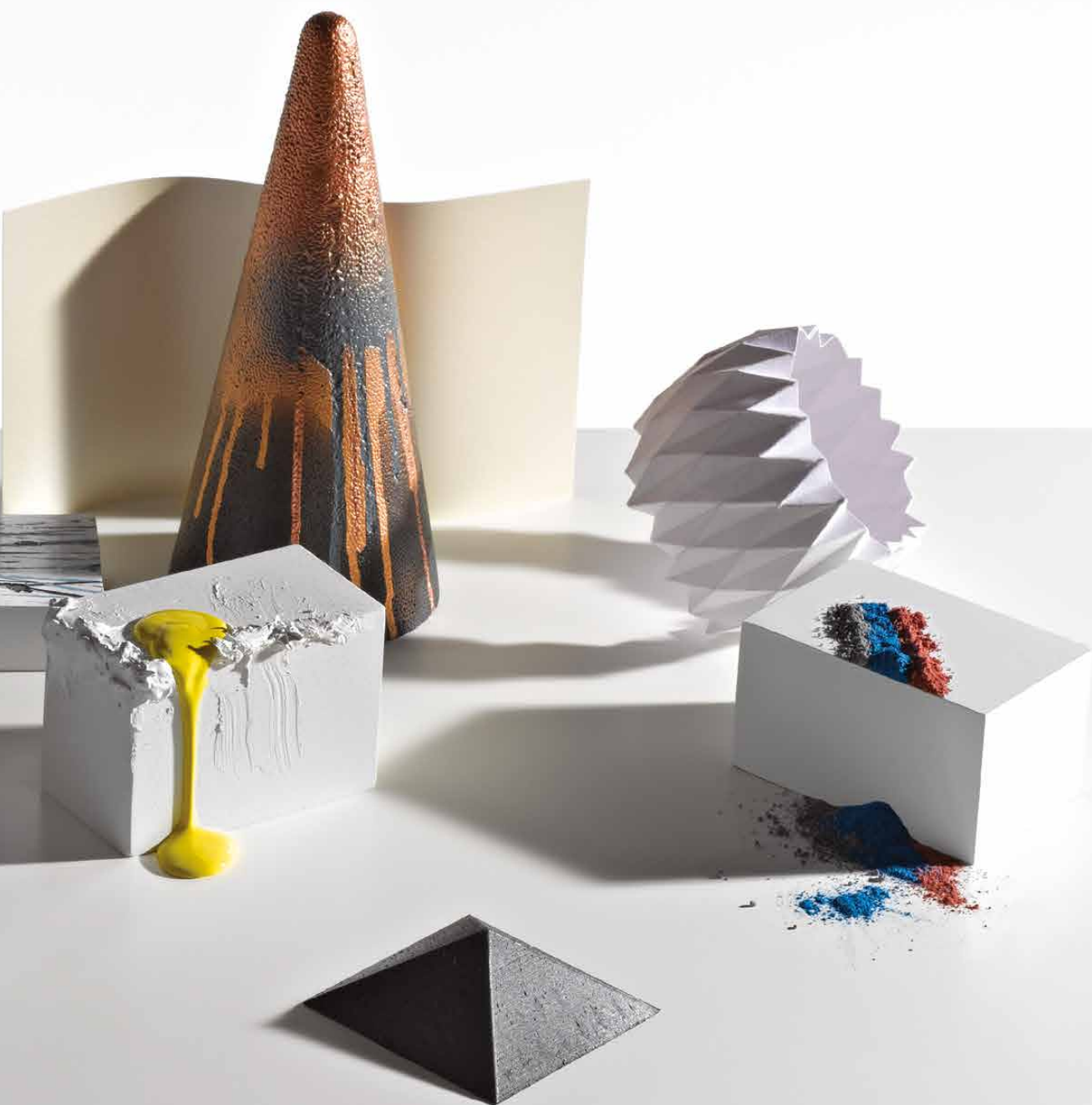


STONE - DARK

Welsh Slate, Graphite Slate Stripping - Broken Bond



Original
Modern
Versatile
Refined
Impact
Abstract



Umbra



Umbra Eclipse
AR0AUA33



Umbra Veil
AR0AUA13



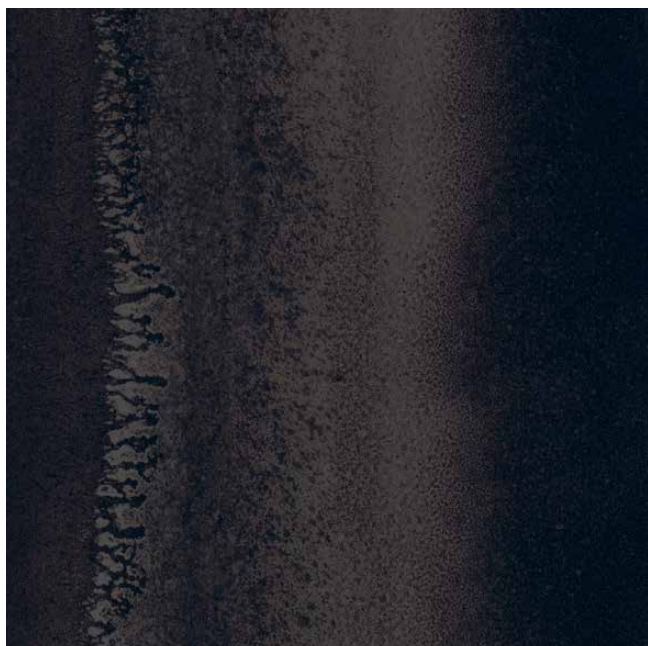
Umbra Dusk
AR0AUA24



ABSTRACT - UMBRA

Umbra Dusk - Broken Bond

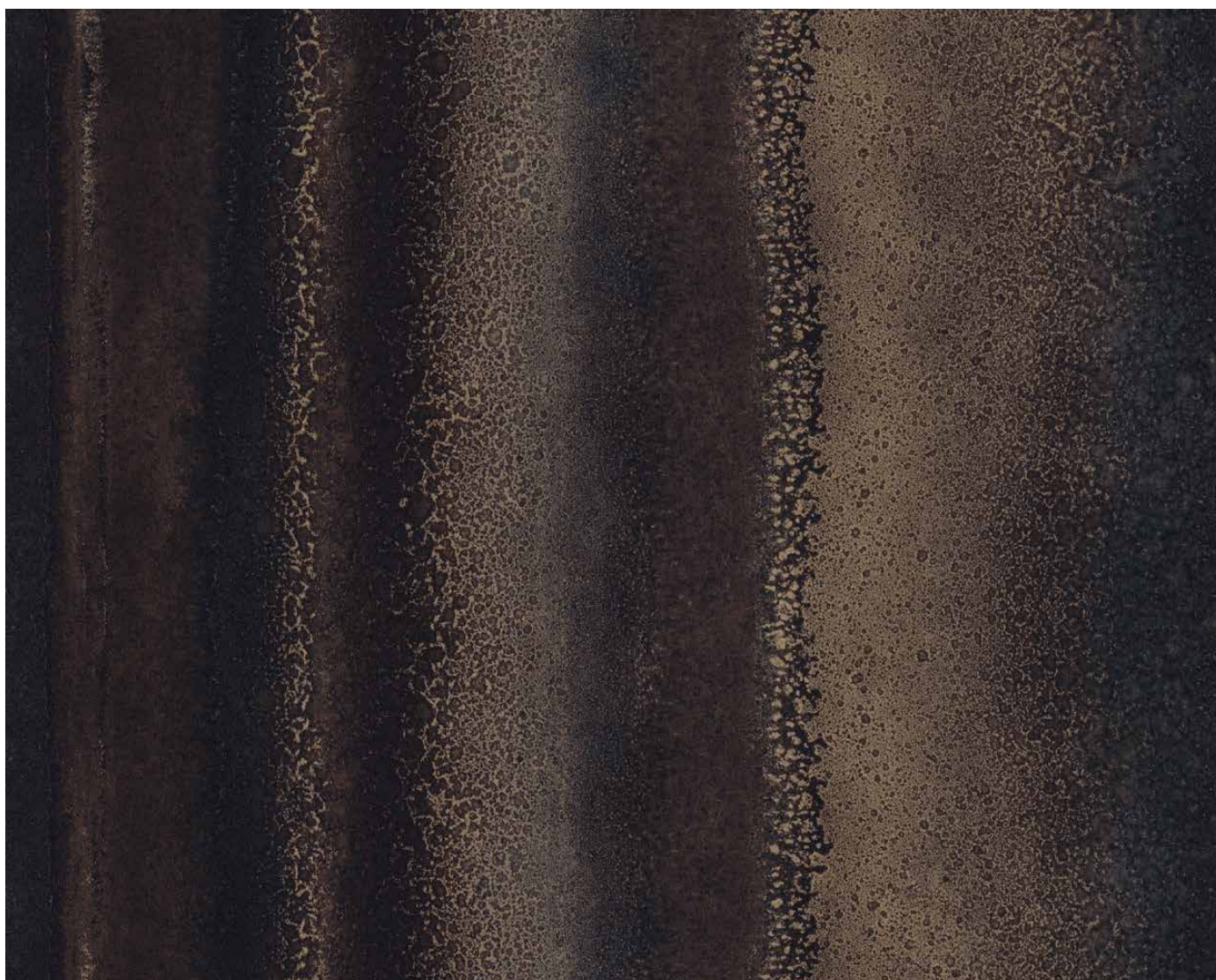




Chroma Black
AROACH22

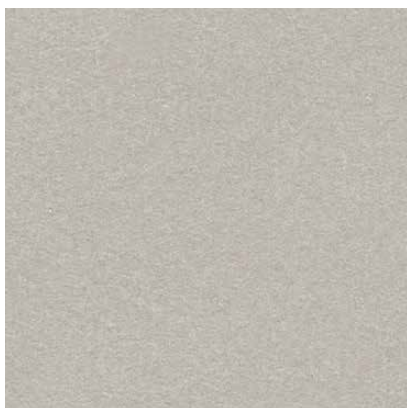


Chroma Blue
AROACH99

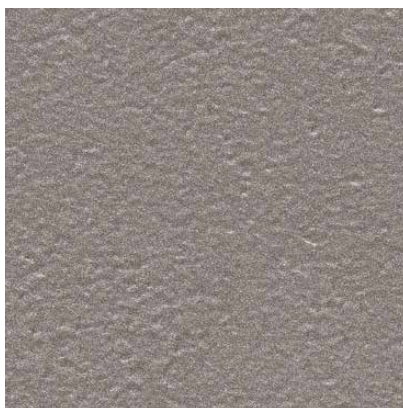


Chroma Gold
AROACH79

Alchemist



Metal Foil
AROAME31



Metal Tin
AROAME32



Patina Atom
AROAPT33



Patina Vapour
AROAPT31



Fragment Astro
AROSFR33



Patina Smalt
AROAPT22



Fragment Nova
AROSFR11



Metal Pewter
AROAME39



Fragment Abyss
AROSFR22



Metal Shot
AROAME33



Fragment Comet
AROSFR78



Metal Gold Leaf
AROAME71



ABSTRACT - ALCHEMIST

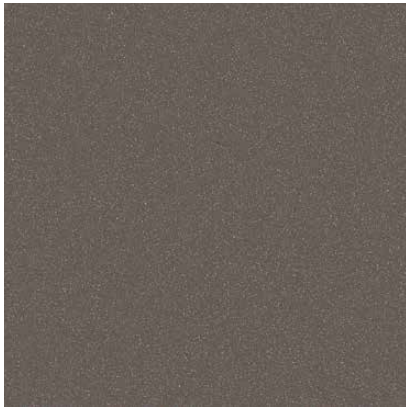




Mica Mix Eggshell
AROSMM41



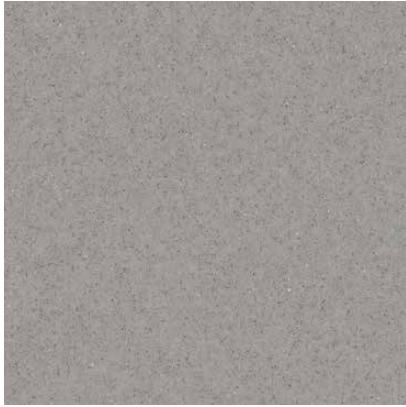
Mica Mix Earth
AROSMM44



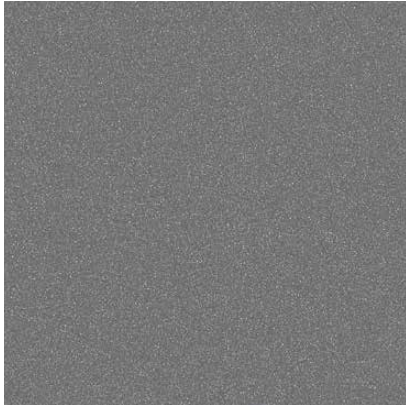
Shimmer Felt
AROASE34



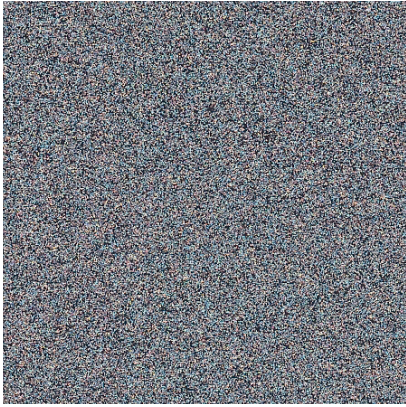
Composite Calcium
AROSGN11



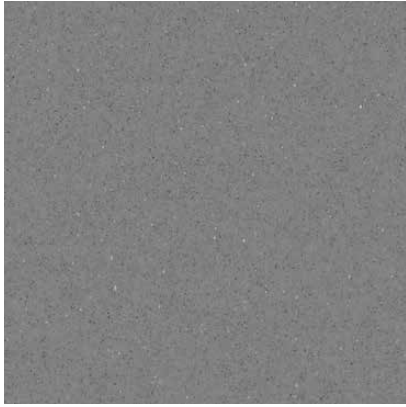
Composite Pumice
AROSGN31



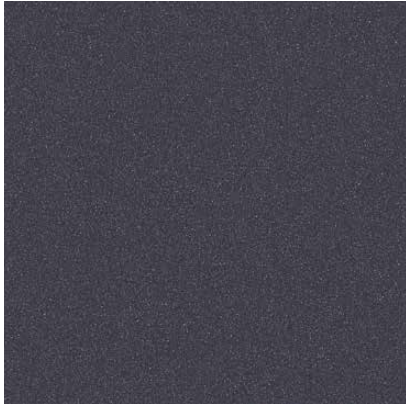
Shimmer Metal
AROASE33



Marcasite
AROAMR30



Composite Flint
AROSGN32



Shimmer Denim
AROASE39

Meridian



Equator Flow
AR0AEQ13



Equator Tide
AR0AEQ40



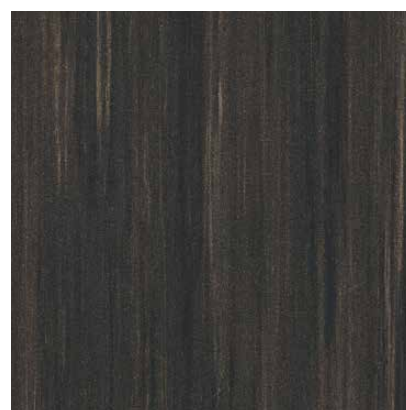
Equator Wave
AR0AEQ39



Infinity Spark
AR0A1131



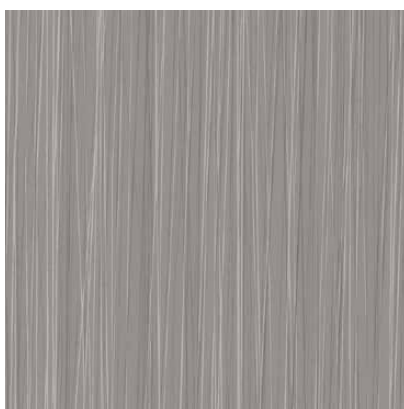
Infinity Strobe
AR0A3120



Infinity Pulse
AR0A2048



Linear Chalk
AR0ALA11



Linear Graphite
AR0ALA33



Linear Metallic Steel
AR0ALA21



Back To Black Vamp
AR0ABB22



Back To Black Envy
AR0ABB28



Linear Metallic Spice
AR0ALA24



ABSTRACT – MERIDIAN





Napoli
AROACF75



Sevilla
AROACF64



Rio
AROACF56



Mumbai
AROACF98



Marrakech
AROACF51



Bangkok
AROACF59



Paris
AROACF92



Helsinki
AROACF90



Seoul
AROACF84



Glint Orb
AROAGG11



Glint Void
AROAGG22



Dublin
AROACF83

Leave a lasting first impression.

Amtico Entryway is tough, resilient and protective, featuring reinforced scraper fibres to remove grit and moisture. Choose from three design styles with a choice of colourways to complement and protect your interior Amtico flooring.



Recoarse Bypass Black

Ruffian



Tan Tetons
EERF008404

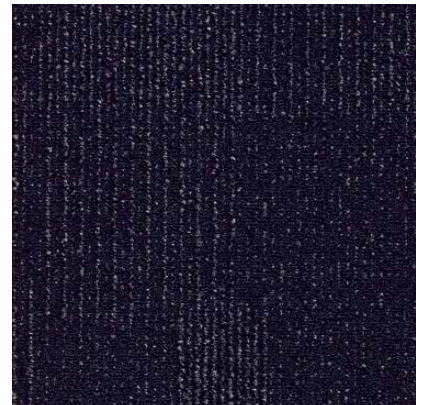


Ebony Earth
EERF001506

Recoarse

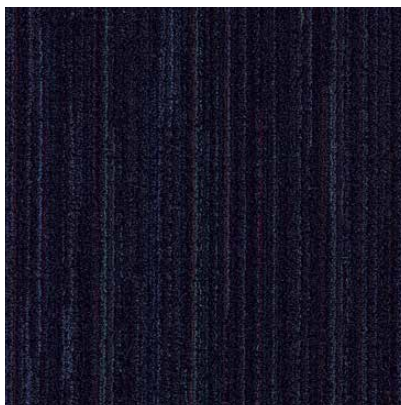


Traverse Tan
EERC008413

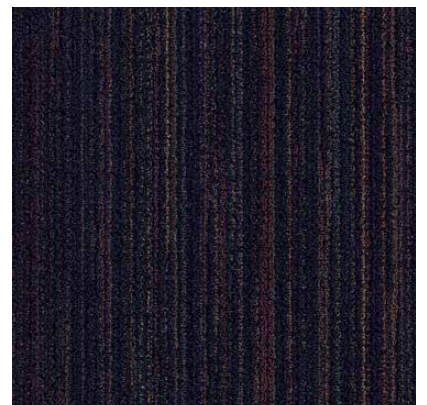


Bypass Black
EERC001518

Take Back



Redeem
EETB003520



Convert
EETB001419

Find out more about the
Entryway collection at
amtico.com/commercial/entryway

Laying Patterns.

Our laying patterns are a foundation for creativity, a framework for you to experiment with products, shapes and tile sizes to produce extraordinary floors.

Create your Signature style.

Choose from our unrivalled range of designs to create your Signature style.

Pick any of our standard planks and tiles in one colour and size to create simple elegance or use imaginative combinations of colours and sizes to create floors that deliver real impact. These are just a few examples, discover more at amtico.com/commercial/layingpatterns



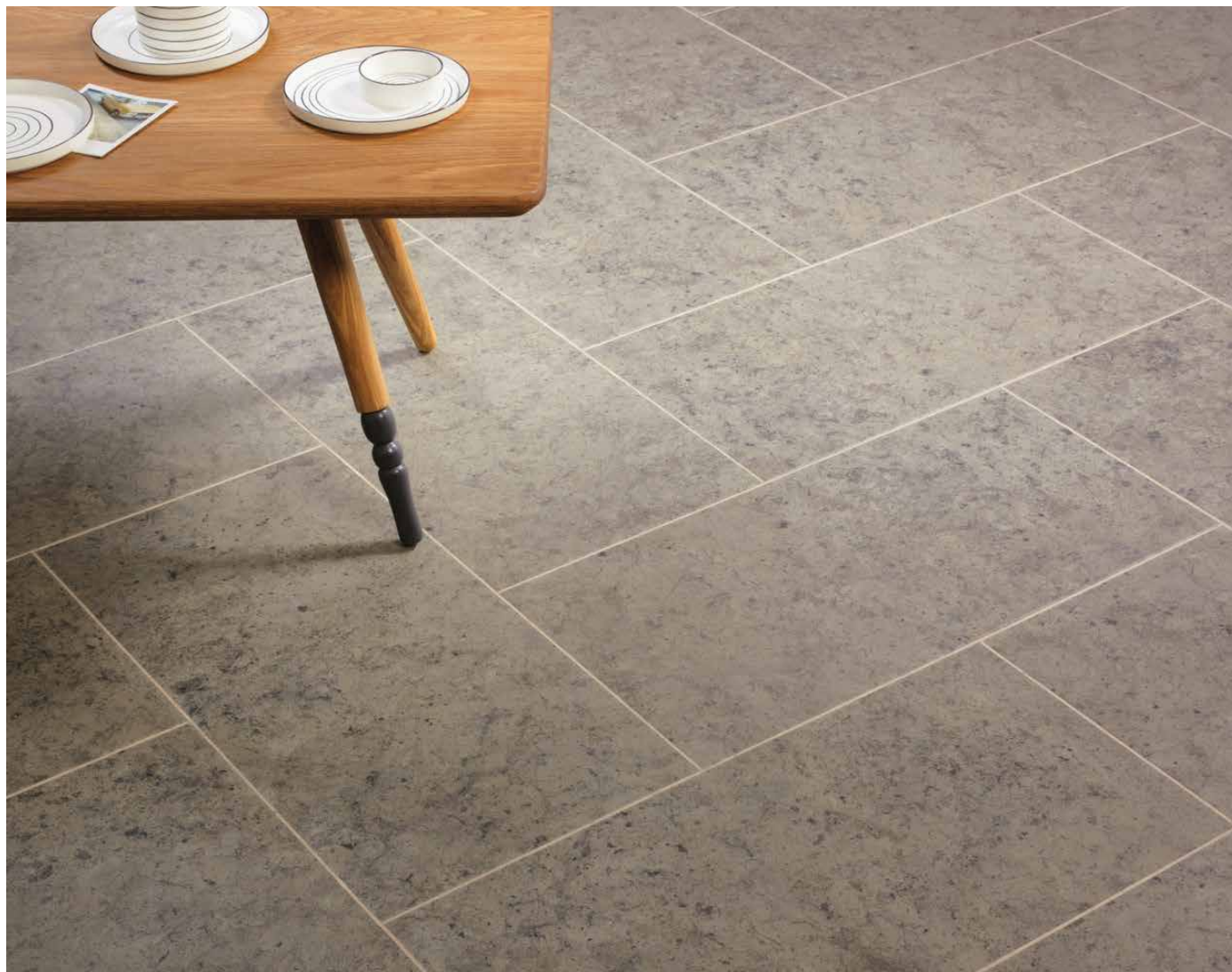
"Simple patterns let the beauty of the product speak and create refined and inviting spaces."

Sarah Escott
Senior Designer

Buckland Stone



Herringbone Tile



A directional grain in long elegant planks creates lovely flow. →

Stripwood



Shibori Sencha



Uniform Tile

Contemporary Abstracts work brilliantly in classic large scale patterns. →



Alchemy Haze

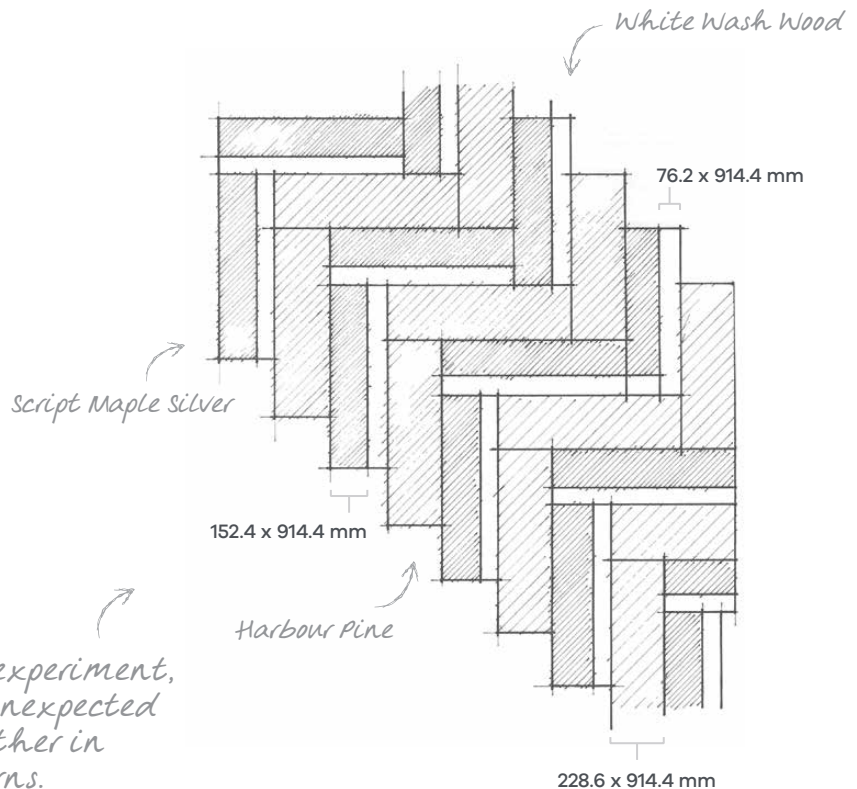


Floors that deliver real impact.

Amtico Signature's planks and tiles work brilliantly together to create inspiring floors. Select the perfect combination for your project from our diverse Wood, Stone and Abstract palettes.

*Be bold and experiment,
try placing unexpected
products together in
classic patterns.*

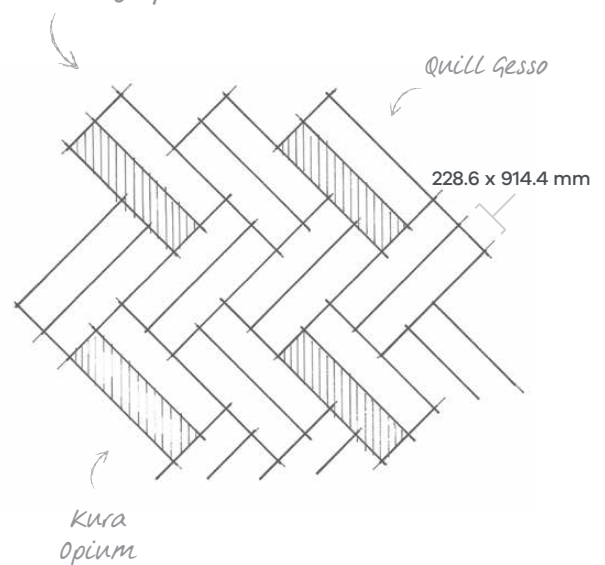
Random Plank Herringbone



Twin Herringbone



*Embrace Woods and
Stones in one pattern,
together they create
stunning spaces.*



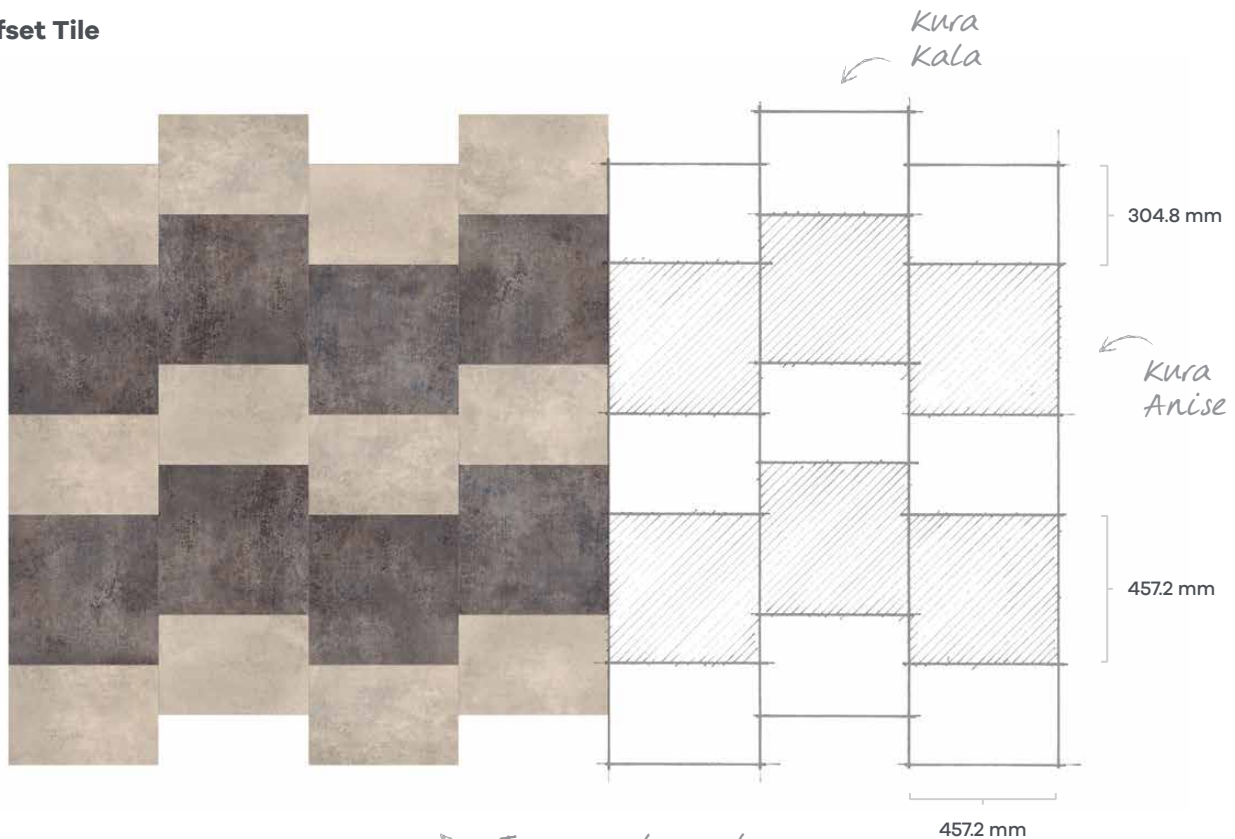
For all available sizes refer to the product matrix on page 121-123.



White Wash Wood, Script Maple Silver, Harbour Pine – Random Plank, Herringbone

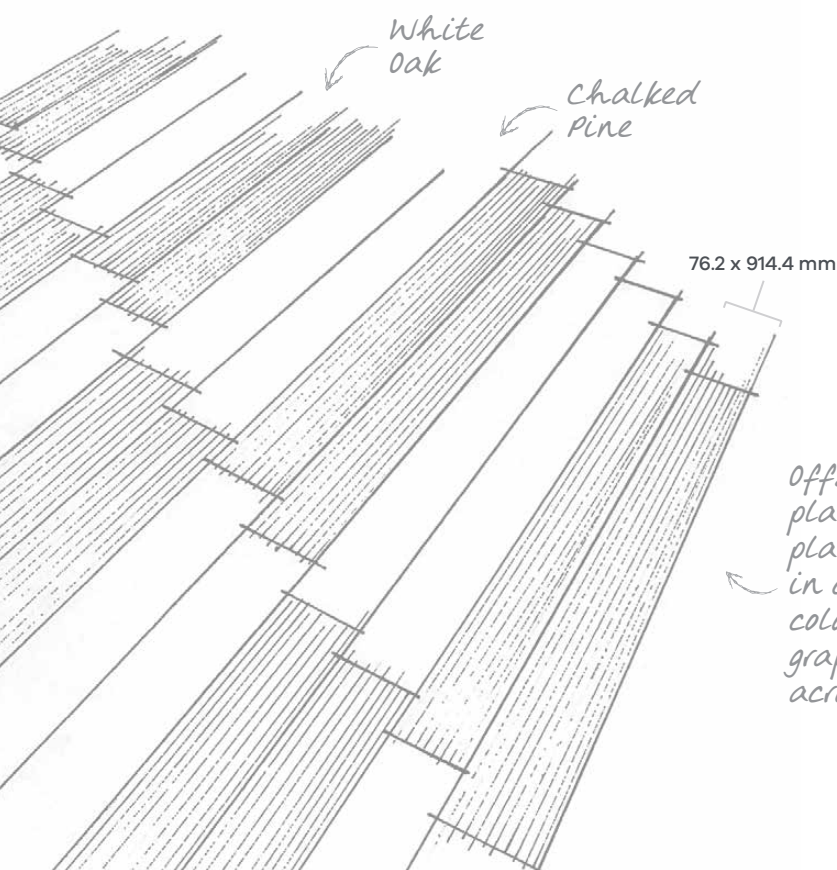


Offset Tile



Two complementary stones work well in this staggered geometric pattern.

Offset Plank



Offsetting planks by a plank width in contrasting colours creates graphic flow across a space.

Ready to create?

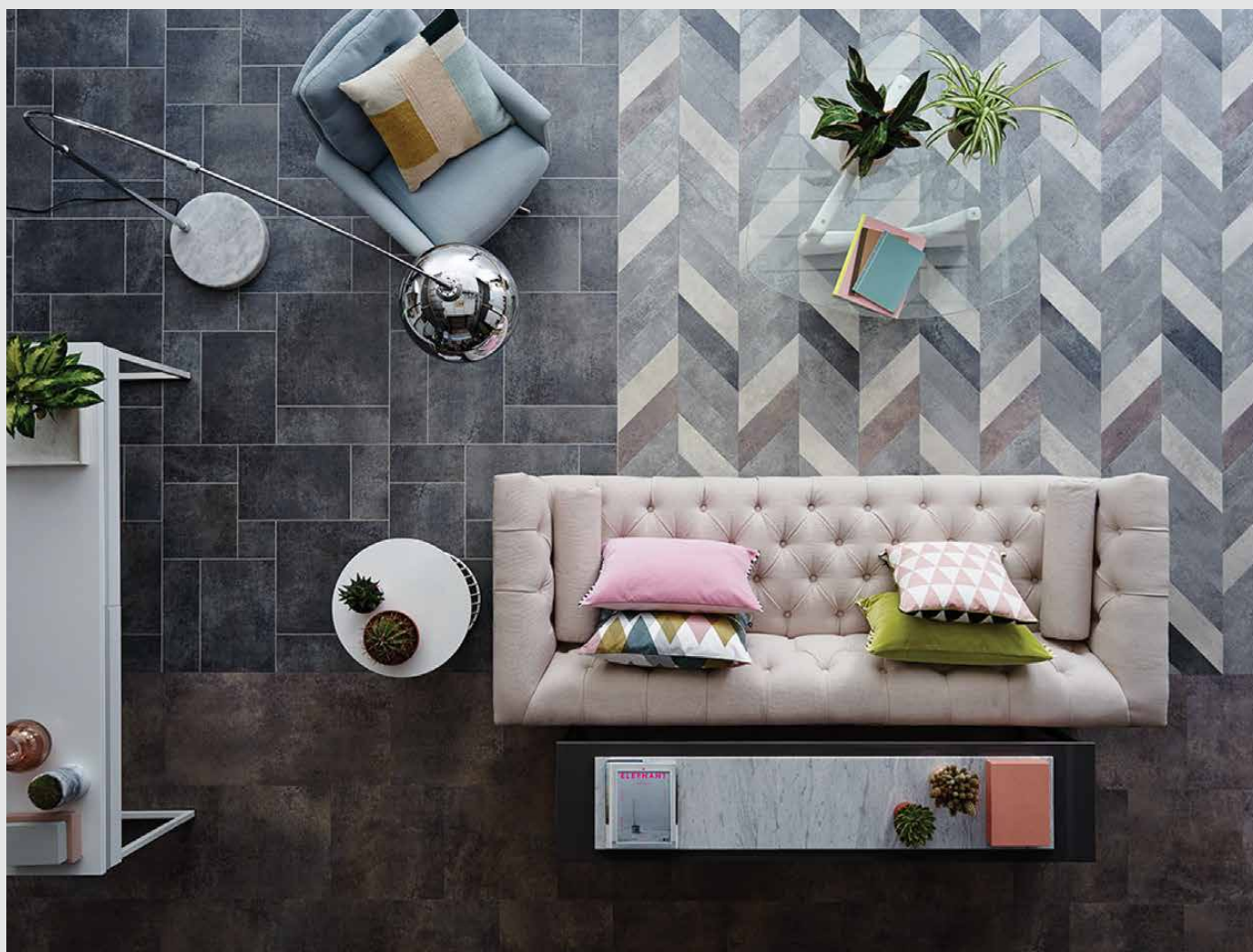
Discover our complete collection of laying patterns, explore products and palettes, and try our room visualiser at [amtico.com](https://www.amtico.com)

For all available sizes refer to Technical Information from page 118.

Original. Beautiful. Defined.

Designers' Choice is a collection of 84 beautiful floor designs created by the Amtico design team.

Predefined, ready to use product combinations across 14 laying patterns that make creating stunning floors easy.



Designers' Choice

We wanted to bring you sophisticated, surprising and original choices.



We've experimented with texture, tone and scale.



Explore the full collection.

View Designers' Choice in our brochure and discover 'Endless Possibilities' - your chance to take any Designers' Choice laying pattern and experiment with colour and product to create a floor that's unique for your project.

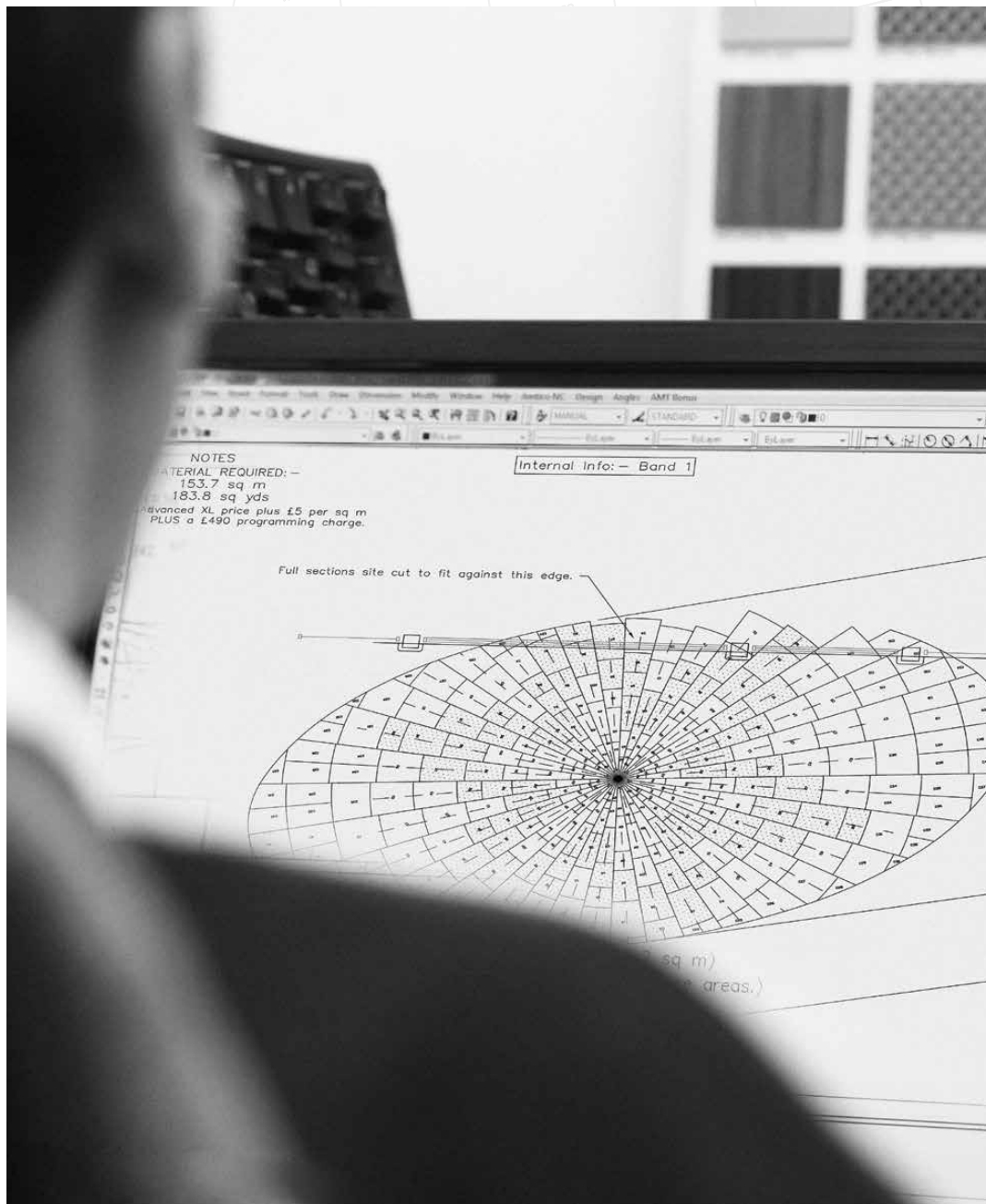
Find out more at amtico.com/commercial/designerschoice



Bespoke

Make a bespoke statement.

Bold, creative and beautiful, a bespoke floor can be tailored to your project requirements. Thanks to our advanced cutting capabilities and unrivalled range of products we will turn your unique vision into reality.



▲ Our in-house creative team are ready to provide advice on product choice, laying patterns and finishes and our CAD experts will work with you to perfect your design ready for manufacture.

LAKESIDE LOUNGE

Bespoke

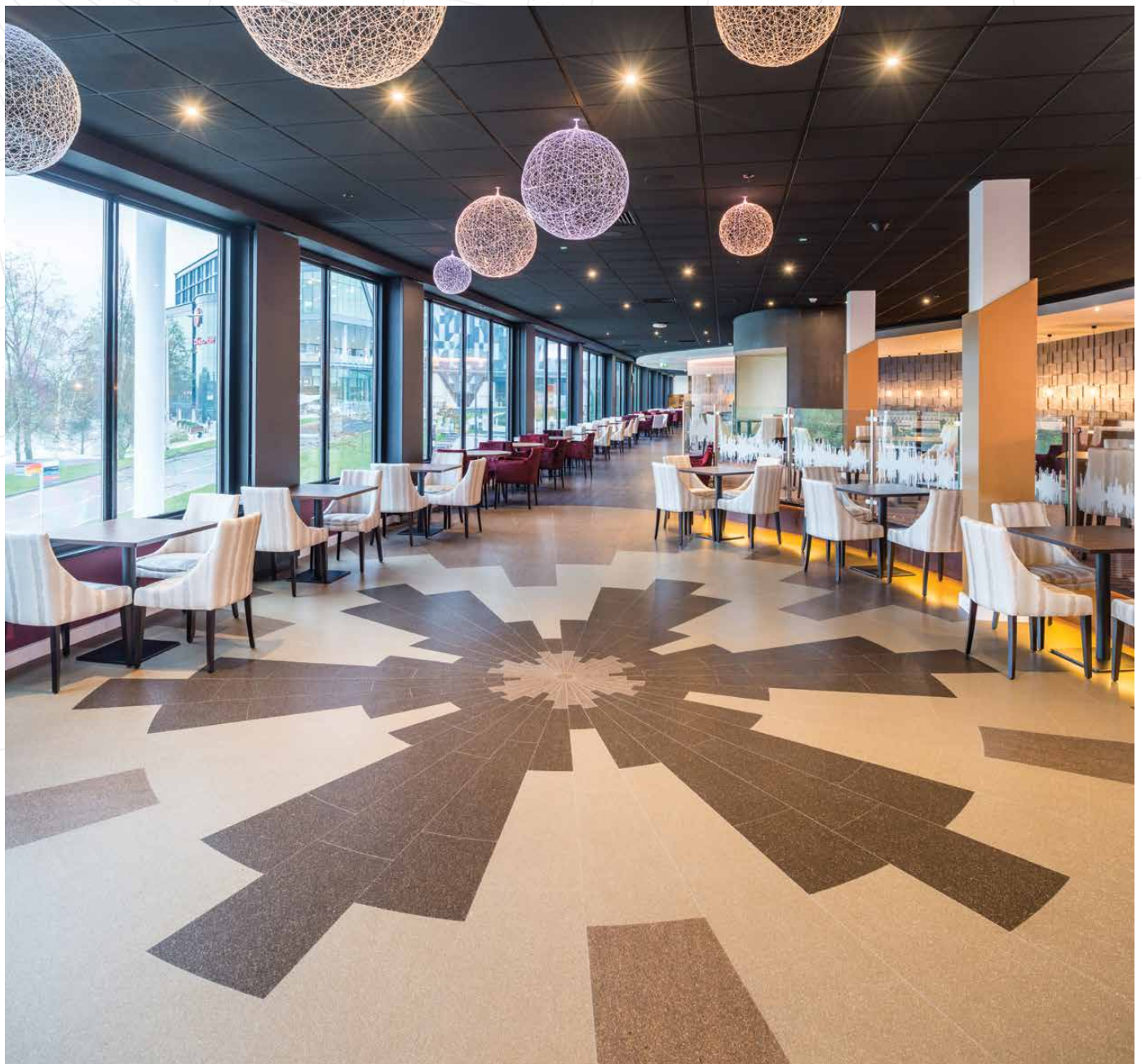
A bespoke floor for the Lakeside Lounge.

Interior design firm Atlantic Group was asked to create a bespoke flooring design to match the modern and stylish surroundings of the Lakeside VIP Lounge.

Innovative Abstract products were used to produce a unique, geometric design with shimmering bronze and earthy pearl tones creating a real sense of luxury and exclusivity in the space.

"Given the relatively high footfall we needed to specify products that were going to be durable. Amtico helped us during the design process to specify the correct products. They also supplied samples to use in mood boards, which were a great help when presenting our vision to the client."

Annie Hill
Interior Designer,
Atlantic Group



Feature Stripping

Add contrast, create a grout effect or define tile and plank shapes with Amtico feature stripping. Available in a choice of five sizes.

Feature stripping is available in the following sizes, 2 mm thickness*



3.2 mm x 914.4 mm



6.4 mm x 914.4 mm



9.5 mm x 914.4 mm



12.7 mm x 914.4 mm



19.1 mm x 914.4 mm



American Oak
AROW7050



Fused Birch
AROW7500



Wenge Wood
AROW7490



Wild Walnut
AROW7620



Cirrus Air
AROW8100



Mirabelle Creme
AROSMB14



Stria Sediment
AROSMS14



Stria Basalt
AROSMS43



Stria Volcanic
AROSMS42



Concrete Pale
AROSCN30



Shimmer Denim
AROASE39



Silver
AROAMP38



Bronze
AROAMP18



Gold
AROAMP78



Pure Plain Black
AROAPN22



Pure Plain White
AROAPN11

This is a small representation of available feature stripping, for full stripping availability please visit amtico.com/commercial/stripping

* Sizes shown are not actual size

Specifications

Select from 16 readily available 3.2 mm x 914.4 mm stripping products, designed to complement your chosen flooring and enhance your design.

Use the chart below to calculate the number of boxes of stripping you need based on the size of plank/tile (horizontal axis) and the quantity m² (vertical axis).

Quantity m ²	Size of plank / tile													
	76.2 x 914.4 mm	114.3 x 914.4 mm	152.4 x 914.4 mm	228.6 x 914.4 mm	457.2 x 914.4 mm	184.2 x 1219.2 mm	228.6 x 1219.2 mm	304.8 x 304.8 mm	304.8 x 457.2 mm	457.2 x 457.2 mm	304.8 x 609.6 mm	457.2 x 609.6 mm	457.2 x 1219.2 mm	Flag Stone AR0D1400
2.5	1	1	1	1	1	1	1	1	1	1	1	1	1	1
5	2	2	1	1	1	2	2	2	1	1	1	1	1	2
7.5	3	2	2	1	1	2	2	2	2	2	2	2	1	3
10	4	3	2	2	2	3	3	3	2	2	2	2	2	3
12.5	5	4	3	2	2	4	3	4	3	2	3	3	2	4
15	6	4	3	2	2	5	3	4	3	3	3	3	2	5
17.5	7	5	4	3	3	6	4	5	4	3	4	4	3	6
20	8	6	4	3	3	7	4	5	4	3	4	4	3	6
22.5	9	6	5	3	3	7	4	6	5	4	4	5	3	7
25	10	7	5	4	4	8	5	7	5	4	5	5	3	8
27.5	11	8	6	4	4	9	5	7	6	4	5	6	4	9
30	12	8	6	4	4	10	5	8	6	5	5	6	4	9
32.5	13	9	7	5	5	11	6	8	7	5	6	7	5	10
35	14	10	7	5	5	12	6	9	7	5	6	7	5	11
37.5	15	10	8	5	5	12	6	10	8	6	7	8	5	12
40	16	11	8	6	6	13	7	10	8	6	7	8	6	12
42.5	17	12	9	6	6	14	7	11	9	6	7	9	6	3
45	18	12	9	6	6	15	7	12	9	7	8	9	6	14
47.5	19	13	10	7	7	16	8	12	10	7	8	10	7	15
50	20	14	10	7	7	17	8	13	10	7	8	10	7	15
52.5	21	14	11	7	7	18	8	13	11	8	9	11	7	16
55	22	15	11	8	8	19	9	14	11	8	9	11	8	17
57.5	23	16	12	8	8	20	9	15	12	8	10	12	8	18
60	24	16	12	8	8	21	9	15	12	9	10	12	8	18
62.5	25	17	13	9	9	22	10	16	13	9	10	13	9	19
65	26	18	13	9	9	23	10	16	13	9	11	13	9	20
67.5	27	18	14	9	9	23	10	17	14	10	11	14	9	21
70	28	19	14	10	10	24	11	18	14	10	11	14	10	21
72.5	29	20	15	10	10	25	11	18	15	10	12	15	10	22
75	30	20	15	10	10	26	11	19	15	11	2	15	10	23
77.5	31	21	16	11	11	27	12	19	16	11	13	16	11	24
80	32	22	16	11	11	28	12	20	16	11	13	16	11	24
82.5	33	22	17	11	11	28	12	21	17	12	13	17	11	25
85	34	23	17	12	12	29	13	21	17	12	14	17	12	26
87.5	35	24	18	12	12	30	13	22	18	12	14	18	12	27
90	36	24	18	12	12	31	13	23	18	13	14	18	12	27
92.5	37	25	19	13	13	32	14	23	19	13	15	19	13	28
95	38	26	19	13	13	33	14	24	19	13	15	19	13	29
97.5	39	26	20	13	13	33	14	24	20	14	16	20	13	30
100	40	27	20	14	14	17	15	25	20	14	16	20	14	30



Simple or elaborate, art deco or gothic, define a floor with an Amtico border.

Letters indicate a product of your choice

Broad Stripe

Border AROB6500 – 50.8 x 914.4 mm
Corner AROC65S0



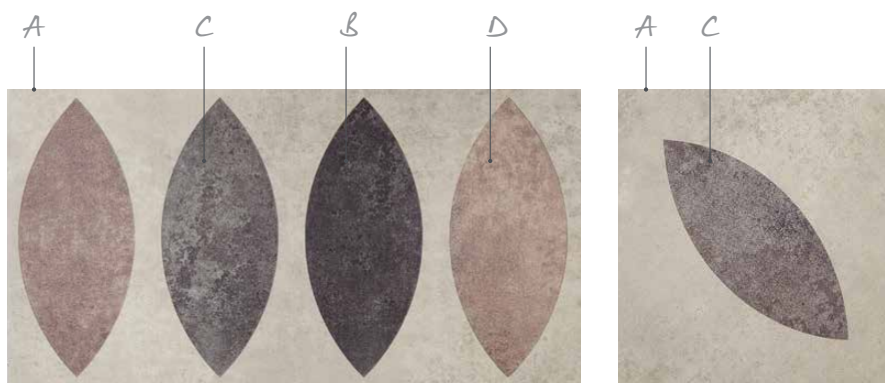
Square

Border AROB6200 – 25.4 x 889.0 mm
Corner AROC62S0



Ellipse Grand

Border AROB7200 – 228.6 x 914.4 mm
Corner AROC72S0



Piping

Border AROB6400 –
12.7 x 914.4 mm



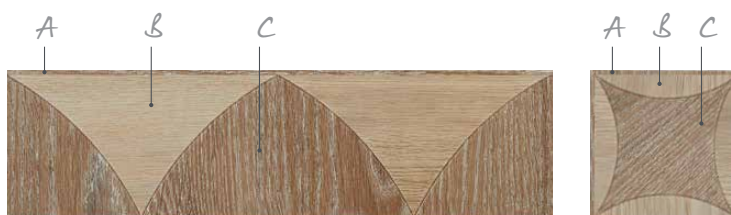
Offset Stripe

Border AROB7000 –
38.1 x 914.4 mm



Gothic Arch

Border AROB670B – 101.6 x 914.4 mm
Corner AROC67SB



Metro

Border AROB6600 –
57.2 x 914.4 mm



Bevelled Diamond

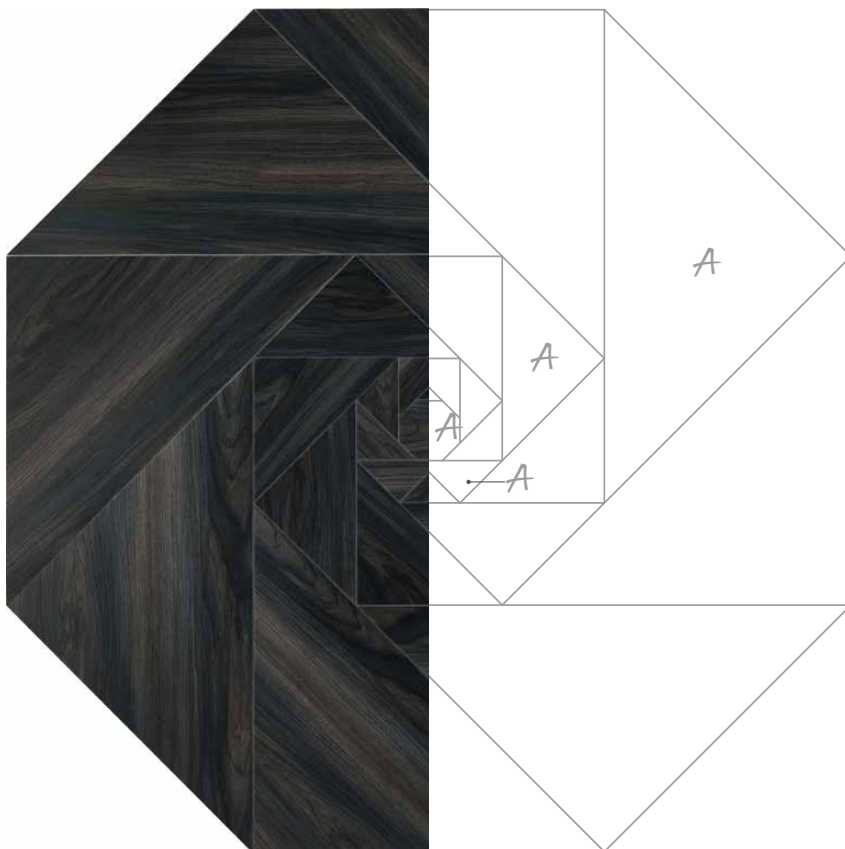
Border AROB270B – 76.2 x 914.4 mm
Corner AROC27SB



For our full range of borders please visit amtico.com/commercial/borders

Motifs

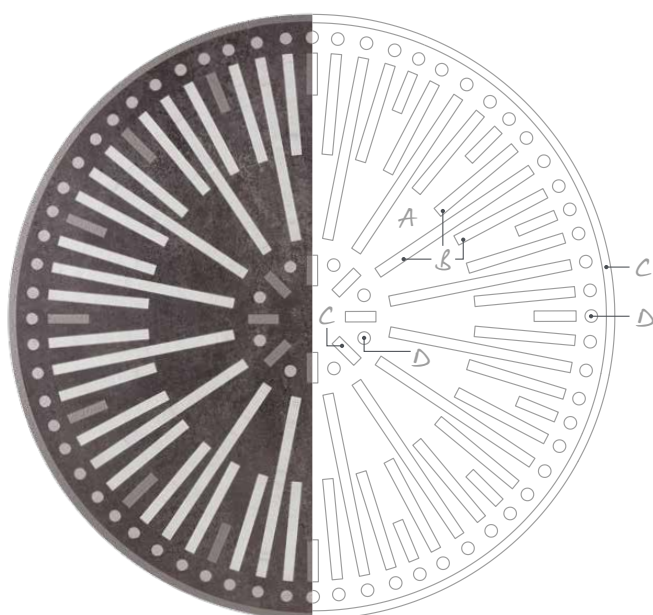
Bring a focal point and individuality to a space with a Signature motif.



◀ Pavilion AR0MC950

Diameter = 1562.1 mm

Product Shown:
Ink Wash Wood



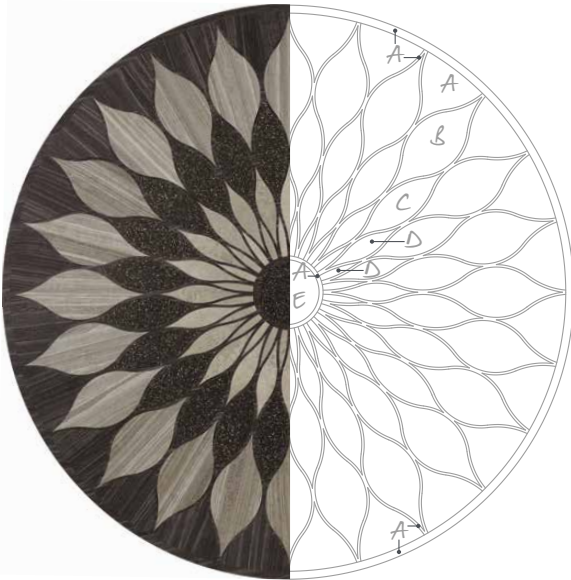
▶ Manhattan AR0MC220

Diameter = 889.0 mm

Products Shown:
A = Kura Opium
B = Infinity Spark
C = Metal Tin
D = Metal Foil

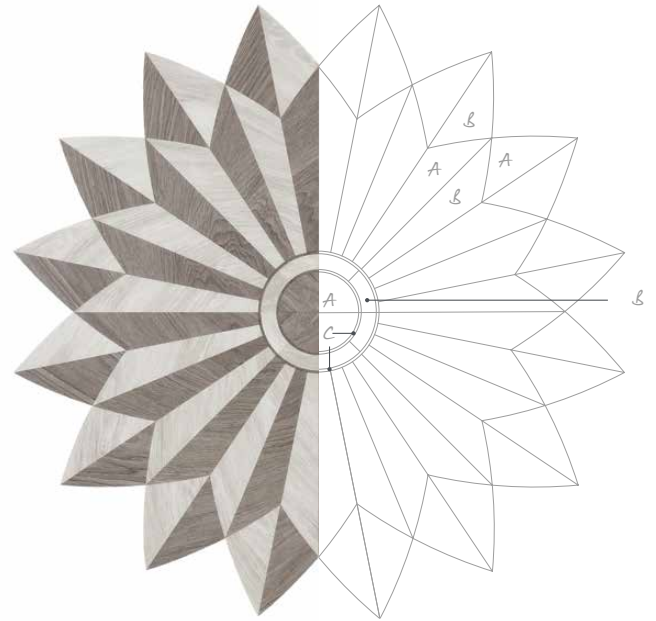
▼
Lotus
AR0MC400
Diameter = 914.4 mm

Products Shown:
A = Shibori Lapsang
B = Shibori Jasmine
C = Fragment Abyss
D = Kura Fennel
E = Fragment Abyss



▼
Apollo
AR0MC230
Diameter = 889.0 mm

Products Shown:
A = Wharf Oak
B = White Wash Wood
C = Stria Rock



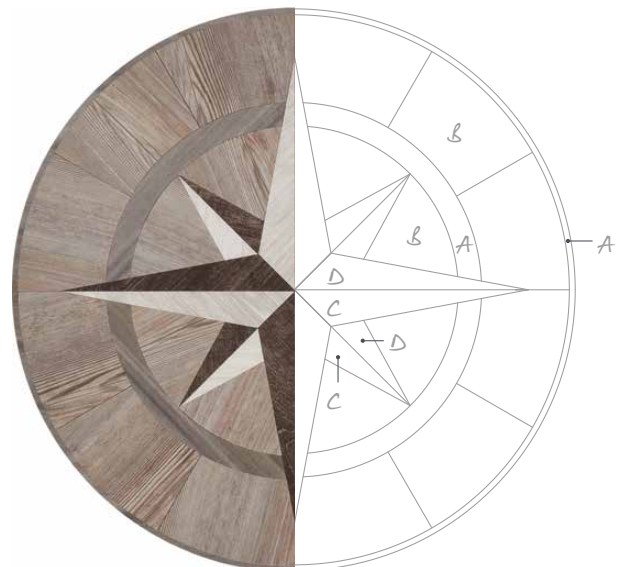
▼
Myron
AR0MC160
Diameter = 914.4 mm

Product Shown:
Equator Wave



▼
Small Star
AR0MC300
Diameter = 609.6 mm

Products Shown:
A = Equator Wave
B = Parisian Pine
C = Script Maple Silver
D = White Wash Wood



Make an impact, but not on the environment.

We're committed to environmental responsibility and the Signature Collection is a low level environmental impact product.



"Sustainability is a holistic process, from ethical supply chains to our carbon footprint we're committed to leading standards."

Ben Naylor
Head of Procurement
and Supply



SUSTAINABILITY

We take sustainability seriously, that's why the Signature Collection achieves the top A+ BREEAM/BRE¹ Green Guide rating, why we're leading industry standards and why we're the sustainable choice across all sectors.

BREEAM[®]

¹BRE Global Green Guide compares flooring specifications and compares their environmental impact on a scale of A+ (lowest environmental impact) to E (greatest environmental impact).



ISO 14001 outlines how to put an effective environmental management system in place in your organization.



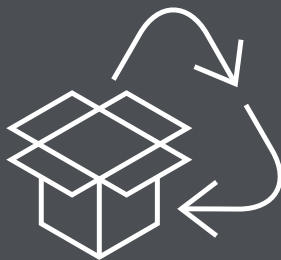
PRE PRODUCTION

We have a sustainable supply chain, customer audited ethical trading policy and commitment to using phthalate free products, recycled glass beads and bio-based plasticiser.



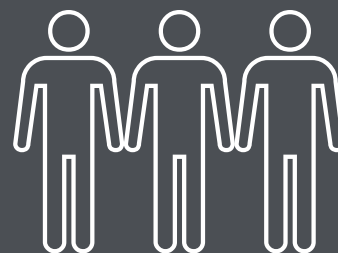
PRODUCTION

Our energy, water, waste, ecology and emissions have been independently verified and contribute to the attainment of the BRE Global Green Guide online A+ classification. Almost all production waste is recycled back into product and we send zero waste to landfill.



POST PRODUCTION

All our packaging can be recycled and almost 100% of our internal packaging is reused or recycled. Any flooring we can't reprocess is supplied for other PVC use and our direct delivery service reduces our carbon footprint.






LEADING STANDARDS

We are a member of EPFLOOR and our Environmental Management System is ISO 14001 certified. We're dedicated to raising environmental awareness across suppliers and contractors and support local environmental projects.

Technical information.

View product availability,
packaging information and
technical specifications.
Check adhesive information,
installation guidelines and
industry accreditations.

Technical Specification

Name	Standard	Symbol	Result
CE / DOP	EN 14041		CPR/A1/001
Usage Classification	EN 685 EN ISO 10874		23, 34, 43
Manufacturing Standard	EN 649 EN ISO 10582		Pass
Total Thickness	EN 428 EN ISO 24346		2.5 mm
Wear Layer Thickness	EN 429 EN ISO 24340		1.0 mm
Weight	EN 430 EN ISO 23997		3,130 g/m ²
Abrasion Resistance	EN 649 EN ISO 10582		Group T Type 1
Residual Indentation	EN 433 EN ISO 24343-1		≤ 0.1 mm
Dimensional Stability	EN 434 EN ISO 23999		≤ 0.25 %
Curling	EN 434 EN ISO 23999		≤ 2 mm
Flexibility	EN 435 EN ISO 24344 method A		Pass
Slip Resistance	DIN 51130 EN 13893		R10* Class DS
Chemical Resistance	EN 423 EN ISO 26987		Excellent
Light Stability	EN ISO 105-B02		7 or better
Flammability / Smoke Emissions	EN13501-1		B _{fl} -s1
Castor Chair Resistance	EN 425		Pass
Sound Reduction	ISO 140-8		4 dB
Thermal Resistance	EN 12664		0.021 m ² K/W (underfloor heating suitable)
Electrostatic Performance	ISO 6356 EN 1815		≤ 2 kV
Emissions		 Emissionsgeprüfter Bodenbelag nach DIBt – Grundsätzen	Z-156.603.596
Emissions COV		 Information sur le niveau d'émission de substances volatiles dans l'air intérieur, présentant un risque de toxicité par inhalation, sur une échelle de classe allant de A+ (très faibles émissions) à C (fortes émissions).	A+
Surface Treatment			Urethane
UPEC	U ₄ P ₃ E ₂ C ₂		Certificate NF UPEC 326-001.1
Environmental	BRE Green Guide		A+ rating SD028 CERT ENP468/a-c
Phthalate Free		 Amtico Signature products are manufactured using both phthalate free and bio-based plasticisers except for recycled content.	

* For safety flooring with long-term retention of slip resistance refer to the Amtico Assura range.

Size & Specification:

*First finish shown in this column is the recommended surface finish for the product.

Size & Specification:				Planks																Tiles								Cross Grain		Design Options																																																																																																																																																																																																																																																																																																																																																																																																																																																																																																																																																																																																																																																																																																																																																																																																																																																																																																																																																																																																																																																																																																																																																																																																																			
				SIZES																																																																																																																																																																																																																																																																																																																																																																																																																																																																																																																																																																																																																																																																																																																																																																																																																																																																																																																																																																																																																																																																																																																																																																																																																																													
*First finish shown in this column is the recommended surface finish for the product.				76.2 x 914.4 mm (3" x 36")																114.3 x 914.4 mm (4.5" x 36")								152.4 x 914.4 mm (6" x 36")		228.6 x 914.4 mm (9" x 36")		Xtra 184.2 x 1219.2 mm (7.25 x 48")		Xtra 228.6 x 1219.2 mm (9" x 48")		304.8 x 304.8 mm (12" x 12")		304.8 x 457.2 mm (12" x 18")		457.2 x 457.2 mm (18" x 18")		304.8 x 609.6 mm (12" x 24")		Xtra 457.2 x 609.6 mm (18" x 24")		Xtra 457.2 x 914.4 mm (18" x 36")		Xtra 457.2 x 1219.2 mm (18" x 48")		457.2 mm (18") and 914.4 mm (36") in length		609.6 mm (24") and 1219.2 mm (48") in length		Stripping		Cross Grain Stripping		Laying Patterns		Bespoke		Borders & Motifs		Can be installed tessellated																																																																																																																																																																																																																																																																																																																																																																																																																																																																																																																																																																																																																																																																																																																																																																																																																																																																																																																																																																																																																																																																																																																																																																																	
Product Name	Product Code	Surface Finish*	Price Point																																																																																																																																																																																																																																																																																																																																																																																																																																																																																																																																																																																																																																																																																																																																																																																																																																																																																																																																																																																																																																																																																																																																																																																																																																														

All products are urethane coated and bevelled as standard. Please note all sizes and availability are correct at the time of press. Please contact your local Amtico flooring specialist for the latest information.

Product Availability / Stone

Size & Specification:

*First finish shown in this column is the recommended surface finish for the product.

Size & Specification:				Planks				Tiles				Cross Grain		Design Options										
				Sizes																				
*First finish shown in this column is the recommended surface finish for the product.				76.2 x 914.4 mm (3" x 36")	114.3 x 914.4 mm (4.5" x 36")	152.4 x 914.4 mm (6" x 36")	228.6 x 914.4 mm (9" x 36")	Xtra 184.2 x 1219.2 mm (7.25 x 48")	Xtra 228.6 x 1219.2 mm (9" x 48")	304.8 x 304.8 mm (12" x 12")	304.8 x 457.2 mm (12" x 18")	457.2 x 457.2 mm (18" x 18")	304.8 x 609.6 mm (12" x 24")	Xtra 457.2 x 609.6 mm (18" x 24")	Xtra 457.2 x 914.4 mm (18" x 36")	Xtra 457.2 x 1219.2 mm (18" x 48")	457.2 mm (18") and 914.4 mm (36") in length	609.6 mm (24") and 1219.2 mm (48") in length	Stripping	Cross Grain Stripping	Laying Patterns	Bespoke	Borders & Motifs	Can be installed tessellated
Product Name	Product Code	Surface Finish*	Price Point																					
Alchemy Atmosphere	AR0AAL30	Ceramic/Riven Marble	Standard	•	•	•	•	•	•	•	•	•	•	•	•	•			•		•	•	•	•
Alchemy Haze	AR0AAL14	Ceramic	Standard	•	•	•	•	•	•	•	•	•	•	•	•	•			•		•	•	•	•
Alchemy Storm	AR0AAL20	Ceramic/Riven Marble	Standard	•	•	•	•	•	•	•	•	•	•	•	•	•			•		•	•	•	•
Basilica Salt	AR0SBS12	Ceramic	Standard	•	•	•	•	•	•	•	•	•	•	•	•	•	•	•		•	•	•	•	•
Basilica Shale	AR0SBS31	Ceramic	Standard	•	•	•	•	•	•	•	•	•	•	•	•	•	•	•		•	•	•	•	•
Basilica Shell	AR0SBS41	Ceramic	Standard	•	•	•	•	•	•	•	•	•	•	•	•	•	•	•		•	•	•	•	•
Buckland Stone	AR0SST42	Ceramic/Riven Marble	Standard	•	•	•	•	•	•	•	•	•	•	•	•	•	•	•		•	•	•	•	•
Cadence Aeria	AR0SPB31	Ceramic/Riven Marble	Standard	•	•	•	•	•	•	•	•	•	•	•	•	•	•	•		•	•	•	•	•
Cadence Dune	AR0SPB44	Ceramic/Riven Marble	Standard	•	•	•	•	•	•	•	•	•	•	•	•	•	•	•		•	•	•	•	•
Cadence Montis	AR0SPB22	Ceramic/Riven Marble	Standard	•	•	•	•	•	•	•	•	•	•	•	•	•	•	•		•	•	•	•	•
Crema Marfil	AR0SMF47	Ceramic	Standard	•	•	•	•	•	•	•	•	•	•	•	•	•	•	•		•	•	•	•	•
Cumbrian Slate	AR0SSL32	Ceramic/Riven Marble	Standard	•	•	•	•	•	•	•	•	•	•	•	•	•	•	•		•	•	•	•	•
Doric Marble	AR0STV14	Ceramic	Standard	•	•	•	•	•	•	•	•	•	•	•	•	•	•	•		•	•	•	•	•
Exposed Concrete	AR0SEC30	Ceramic	Standard	•	•	•	•	•	•	•	•	•	•	•	•	•	•	•		•	•	•	•	•
Fossil Limestone	AR0SFL33	Ceramic	Standard	•	•	•	•	•	•	•	•	•	•	•	•	•	•	•		•	•	•	•	•
Graphite Slate	AR0SSL23	Ceramic/Riven Marble	Standard	•	•	•	•	•	•	•	•	•	•	•	•	•	•	•		•	•	•	•	•
Honed Limestone Natural	AR0SLH11	Ceramic	Standard	•	•	•	•	•	•	•	•	•	•	•	•	•	•	•		•	•	•	•	•
Jura Grey	AR0SJA34	Ceramic	Standard	•	•	•	•	•	•	•	•	•	•	•	•	•	•	•		•	•	•	•	•
Jura Yellow	AR0SJA75	Ceramic	Standard	•	•	•	•	•	•	•	•	•	•	•	•	•	•	•		•	•	•	•	•
Kura Anise	AR0SKU39	Ceramic	Standard	•	•	•	•	•	•	•	•	•	•	•	•	•	•	•		•	•	•	•	•
Kura Caraway	AR0SKU38	Ceramic	Standard	•	•	•	•	•	•	•	•	•	•	•	•	•	•	•		•	•	•	•	•
Kura Cassia	AR0SKU41	Ceramic	Standard	•	•	•	•	•	•	•	•	•	•	•	•	•	•	•		•	•	•	•	•
Kura Fennel	AR0SKU34	Ceramic	Standard	•	•	•	•	•	•	•	•	•	•	•	•	•	•	•		•	•	•	•	•
Kura Juniper	AR0SKU42	Ceramic	Standard	•	•	•	•	•	•	•	•	•	•	•	•	•	•	•		•	•	•	•	•
Kura Kala	AR0SKU31	Ceramic	Standard	•	•	•	•	•	•	•	•	•	•	•	•	•	•	•		•	•	•	•	•
Kura Opium	AR0SKU49	Ceramic	Standard	•	•	•	•	•	•	•	•	•	•	•	•	•	•	•		•	•	•	•	•
Limestone	AR0SLK14	Ceramic	Standard	•	•	•	•	•	•	•	•	•	•	•	•	•	•	•		•	•	•	•	•
Lulworth Stone	AR0SST41	Ceramic/Riven Marble	Standard	•	•	•	•	•	•	•	•	•	•	•	•	•	•	•		•	•	•	•	•
Mirabelle Bleu	AR0SMB34	Ceramic	Standard	•	•	•	•	•	•	•	•	•	•	•	•	•	•	•		•	•	•	•	•
Mirabelle Creme	AR0SMB14	Ceramic	Standard	•	•	•	•	•	•	•	•	•	•	•	•	•	•	•		•	•	•	•	•
Riverstone Chalk	AR0SRS14	Ceramic/Riven Marble	Standard	•	•	•	•	•	•	•	•	•	•	•	•	•	•	•		•	•	•	•	•
Riverstone Tundra	AR0SRS40	Ceramic/Riven Marble	Standard	•	•	•	•	•	•	•	•	•	•	•	•	•	•	•		•	•	•	•	•
Stria Ash	AR0SMS13	Ceramic/Riven Marble	Standard	•	•	•	•	•	•	•	•	•	•	•	•	•	•	•		•		•	•	•
Stria Basalt	AR0SMS43	Ceramic/Riven Marble	Standard	•	•	•	•	•	•	•	•	•	•	•	•	•	•	•		•	•	•	•	•
Stria Lava	AR0SMS44	Ceramic/Riven Marble	Standard	•	•	•	•	•	•	•	•	•	•	•	•	•	•	•		•	•	•	•	•
Stria Rock	AR0SMS33	Ceramic/Riven Marble	Standard	•	•	•	•	•	•	•	•	•	•	•	•	•	•	•		•	•	•	•	•
Stria Sand	AR0SMS47	Ceramic/Riven Marble	Standard	•	•	•	•	•	•	•	•	•	•	•	•	•	•	•		•	•	•	•	•
Stria Sediment	AR0SMS14	Ceramic/Riven Marble	Standard	•	•	•	•	•	•	•	•	•	•	•	•	•	•	•		•	•	•	•	•
Stria Volcanic	AR0SMS42	Ceramic/Riven Marble	Standard	•	•	•	•	•	•	•	•	•	•	•	•	•	•	•		•	•	•	•	•
Travertine Honey	AR0STV32	Ceramic	Standard	•	•	•	•	•	•	•	•	•	•	•	•	•	•	•		•	•	•	•	•
Travertine Romano	AR0STV33	Ceramic	Standard	•	•	•	•	•	•	•	•	•	•	•	•	•	•	•		•	•	•	•	•
Welsh Slate	AR0SSL21	Riven Marble	Standard	•	•	•	•	•	•	•	•	•	•	•	•	•	•	•		•	•	•	•	•
Worn Concrete	AR0STL39	Ceramic	Standard	•	•	•	•	•	•	•	•	•	•	•	•	•	•	•		•	•	•	•	•

All products are urethane coated and bevelled as standard. Please note all sizes and availability are correct at the time of press. Please contact your local Amtico flooring specialist for the latest information.

Size & Specification:

*Product should be laid Broken Bond
**Must be laid with stripping

Size & Specification:				Planks					Tiles					Cross Grain		Design Options								
				Sizes																				
				76.2 x 914.4 mm (3" x 36")	114.3 x 914.4 mm (4.5" x 36")	152.4 x 914.4 mm(6" x 36")	228.6 x 914.4 mm (9" x 36")	Xtra 184.2 x 1219.2 mm (7.25 x 48")	Xtra 228.6 x 1219.2 mm (9" x 48")	304.8 x 304.8 mm (12" x 12")	304.8 x 457.2 mm (12" x 18")	457.2 x 457.2 mm (18" x 18")	304.8 x 609.6 mm (12" x 24")	Xtra 457.2 x 609.6 mm (18" x 24")	Xtra 457.2 x 914.4 mm (18" x 36")	Xtra 457.2 x 1219.2 mm (18" x 48")	457.2 mm (18") and 914.4 mm (36") in length	609.6 mm (24") and 1219.2 mm (48") in length	Stripping	Cross Grain Stripping	Laying Patterns	Bespoke	Borders & Motifs	Can be installed tessellated
Product Name	Product Code	Surface Finish	Price Point																					
Back to Black Envy	AR0ABB28	Tick	Advanced	*	*	*	*	*	*	*	*	*	*	*	*	*	*		*	*	*	*	*	*
Back to Black Vamp	AR0ABB22	Tick	Advanced	*	*	*	*	*	*	*	*	*	*	*	*	*	*		*	*	*	*	*	*
Bangkok	AR0ACF59	Ceramic	Advanced	*	*	*	*	*	*	*	*	*	*	*	*	*	*		*	*	*	*	*	*
Chroma Black	AR0ACH22	Ceramic	Standard	*	*	*	*	*	*	*	*	*	*	*	*	*	*		*	*	*	*	*	*
Chroma Blue	AR0ACH99	Ceramic	Standard	*	*	*	*	*	*	*	*	*	*	*	*	*	*		*	*	*	*	*	*
Chroma Gold	AR0ACH79	Ceramic	Standard	*	*	*	*	*	*	*	*	*	*	*	*	*	*		*	*	*	*	*	*
Composite Calcium	AR0SGN11	Ceramic	Advanced	*	*	*	*	*	*	*	*	*	*	*	*	*	*		*	*	*	*	*	*
Composite Flint	AR0SGN32	Ceramic	Advanced	*	*	*	*	*	*	*	*	*	*	*	*	*	*		*	*	*	*	*	*
Composite Pumice	AR0SGN31	Ceramic	Advanced	*	*	*	*	*	*	*	*	*	*	*	*	*	*		*	*	*	*	*	*
Dublin	AR0ACF83	Ceramic	Advanced	*	*	*	*	*	*	*	*	*	*	*	*	*	*		*	*	*	*	*	*
Equator Flow	AR0AEQ13	Ceramic	Standard	*	*	*	*	*	*	*	*	*	*	*	*	*	*		*	*	*	*	*	*
Equator Tide	AR0AEQ40	Ceramic	Standard	*	*	*	*	*	*	*	*	*	*	*	*	*	*		*	*	*	*	*	*
Equator Wave	AR0AEQ39	Ceramic	Standard	*	*	*	*	*	*	*	*	*	*	*	*	*	*		*	*	*	*	*	*
Fragment Abyss	AR0SFR22	Riven Marble	Advanced	*	*	*	*	*	*	*	*	*	*	*	*	*	*		*	*	*	*	*	*
Fragment Astro	AR0SFR33	Riven Marble	Advanced	*	*	*	*	*	*	*	*	*	*	*	*	*	*		*	*	*	*	*	*
Fragment Comet	AR0SFR78	Riven Marble	Advanced	*	*	*	*	*	*	*	*	*	*	*	*	*	*		*	*	*	*	*	*
Fragment Nova	AR0SFR11	Riven Marble	Advanced	*	*	*	*	*	*	*	*	*	*	*	*	*	*		*	*	*	*	*	*
Glint Orb	AR0AGG11	Ceramic	Advanced	*	*	*	*	*	*	*	*	*	*	*	*	*	*		*	*	*	*	*	*
Glint Void	AR0AGG22	Ceramic	Advanced	*	*	*	*	*	*	*	*	*	*	*	*	*	*		*	*	*	*	*	*
Helsinki	AR0ACF90	Ceramic	Advanced	*	*	*	*	*	*	*	*	*	*	*	*	*	*		*	*	*	*	*	*
Infinity Pulse	AR0A2048	Ceramic	Advanced	*	*	*	*	*	*	*	*	*	*	*	*	*	*		*	*	*	*	*	*
Infinity Spark	AR0A1131	Ceramic	Advanced	*	*	*	*	*	*	*	*	*	*	*	*	*	*		*	*	*	*	*	*
Infinity Strobe	AR0A3120	Ceramic	Advanced	*	*	*	*	*	*	*	*	*	*	*	*	*	*		*	*	*	*	*	*
Linear Chalk	AR0ALA11	Ceramic	Standard	*	*	*	*	*	*	*	*	*	*	*	*	*	*		*	*	*	*	*	*
Linear Graphite	AR0ALA33	Ceramic	Standard	*	*	*	*	*	*	*	*	*	*	*	*	*	*		*	*	*	*	*	*
Linear Metallic Spice	AR0ALA24	Ceramic	Standard	*	*	*	*	*	*	*	*	*	*	*	*	*	*		*	*	*	*	*	*
Linear Metallic Steel	AR0ALA21	Ceramic	Standard	*	*	*	*	*	*	*	*	*	*	*	*	*	*		*	*	*	*	*	*
Marcasite**	AR0AMR30	Light Dimple	Advanced						*		*								*					
Marrakech	AR0ACF51	Ceramic	Advanced	*	*	*	*	*	*	*	*	*	*	*	*	*	*		*	*	*	*	*	*
Metal Foil	AR0AME31	Dimple	Advanced	*	*	*	*	*	*	*	*	*	*	*	*	*	*		*	*	*	*	*	*
Metal Gold Leaf	AR0AME71	Dimple	Advanced	*	*	*	*	*	*	*	*	*	*	*	*	*	*		*	*	*	*	*	*
Metal Pewter	AR0AME39	Dimple	Advanced	*	*	*	*	*	*	*	*	*	*	*	*	*	*		*	*	*	*	*	*
Metal Shot	AR0AME33	Dimple	Advanced	*	*	*	*	*	*	*	*	*	*	*	*	*	*		*	*	*	*	*	*
Metal Tin	AR0AME32	Dimple	Advanced	*	*	*	*	*	*	*	*	*	*	*	*	*	*		*	*	*	*	*	*
Mica Mix Earth	AR0SMM44	Ceramic	Advanced	*	*	*	*	*	*	*	*	*	*	*	*	*	*		*	*	*	*	*	*
Mica Mix Eggshell	AR0SMM41	Ceramic	Advanced	*	*	*	*	*	*	*	*	*	*	*	*	*	*		*	*	*	*	*	*
Mumbai	AR0ACF98	Ceramic	Advanced	*	*	*	*	*	*	*	*	*	*	*	*	*	*		*	*	*	*	*	*
Napoli	AR0ACF75	Ceramic	Advanced	*	*	*	*	*	*	*	*	*	*	*	*	*	*		*	*	*	*	*	*
Paris	AR0ACF92	Ceramic	Advanced	*	*	*	*	*	*	*	*	*	*	*	*	*	*		*	*	*	*	*	*
Patina Atom	AR0APT33	Ceramic	Standard	*	*	*	*	*	*	*	*	*	*	*	*	*	*		*	*	*	*	*	*
Patina Smalt	AR0APT22	Ceramic	Standard	*	*	*	*	*	*	*	*	*	*	*	*	*	*		*	*	*	*	*	*
Patina Vapour	AR0APT31	Ceramic	Standard	*	*	*	*	*	*	*	*	*	*	*	*	*	*		*	*	*	*	*	*
Rio	AR0ACF56	Ceramic	Advanced	*	*	*	*	*	*	*	*	*	*	*	*	*	*		*	*	*	*	*	*
Seoul	AR0ACF84	Ceramic	Advanced	*	*	*	*	*	*	*	*	*	*	*	*	*	*		*	*	*	*	*	*
Sevilla	AR0ACF64	Ceramic	Advanced	*	*	*	*	*	*	*	*	*	*	*	*	*	*		*	*	*	*	*	*
Shimmer Denim	AR0ASE39	Ceramic	Advanced	*	*	*	*	*	*	*	*	*	*	*	*	*	*		*	*	*	*	*	*
Shimmer Felt	AR0ASE34	Ceramic	Advanced	*	*	*	*	*	*	*	*	*	*	*	*	*	*		*	*	*	*	*	*
Shimmer Metal	AR0ASE33	Ceramic	Advanced	*	*	*	*	*	*	*	*	*	*	*	*	*	*		*	*	*	*	*	*
Umbra Dusk	AR0AUA24	Ceramic	Standard	*	*	*	*			*	*	*			*		*	*	*	*	*	*	*	*
Umbra Eclipse	AR0AUA33	Ceramic	Standard	*	*	*	*			*	*	*			*		*	*	*	*	*	*	*	*
Umbra Veil	AR0AUA13	Ceramic	Standard	*	*	*	*			*	*	*			*		*	*	*	*	*	*	*	*

All products are urethane coated and bevelled as standard. Exceptions: AR0AMR30 no urethane coating.
Please note all sizes and availability are correct at the time of press. Please contact your local Amtico flooring specialist for the latest information.

Packaging Information

	76.2 x 914.4 mm	114.3 x 914.4 mm	152.4 x 914.4 mm	228.6 x 914.4 mm	Xtra 184.2 x 1219.20 mm	Xtra 228.6 x 1219.2 mm	304.8 x 304.8 mm	304.8 x 457.2 mm	304.8 x 609.6 mm	457.2 x 457.2 mm	Xtra 457.2 x 609.6 mm	Xtra 457.2 x 914.4 mm	Xtra 457.2 x 1219.2 mm
Plank/Tile per Box	60	40	30	20	19	16	45	30	23	20	15	10	8
m² per Box	4.18	4.18	4.18	4.18	4.236	4.454	4.18	4.18	4.273	4.18	4.18	4.18	4.454
Weight (kg) per Box	13.5	13.5	13.5	13.5	13.7	14.4	13.5	13.5	13.8	13.5	13.5	13.5	14.4
Boxes per Pallet	48	48	48	48	48	48	48	48	48	48	48	48	48
m² per Pallet	200.64	200.64	200.64	200.64	203.328	213.792	200.64	200.64	205.104	200.64	200.64	200.64	213.792
Weight (kg) per Pallet	640	640	640	650	660	690	640	640	665	640	640	640	690



The Signature Collection has been designed for straightforward installation. Make your Signature statement by following these floor preparation and installation guidelines.

Intended Use

- Amtico Signature products are recommended for use over properly prepared concrete, suspended wood, metal and other suitable substrates.
- Do not install Amtico Signature products until the subfloor is prepared and the work of all other trades is complete.
- Amtico Signature products can be used with radiant heating systems, but note that the surface temperature of the subfloor must not exceed 27°C (81°F).
- Amtico Signature products are not intended for outside use.

Material Receiving, Handling & Storage

- Ensure materials delivered are the correct style, colour, shade and quantity; check tiles for visual defects.
- Report discrepancies immediately.

Jobsite Testing & Subfloor Preparation

- The building must be sealed with stable environmental conditions.
- Subfloor must be clean (free of dirt, old adhesives, paint, grease, wax or other contaminants that may stain or prevent adhesion), smooth, flat, sound, fit for purpose and free of movement and excess moisture.
- Solvents must not be used to remove oils, greases, adhesive residues etc. as they may be absorbed into the concrete and at a later date migrate back to the surface, producing an adhesive failure.
- Test concrete for moisture content (country specific) or relative humidity in accordance with national regulations.
- Readings above the maximum permitted require the use of a surface damp proof membrane or adequate time for the floor to dry to an acceptable standard. Record test results and corrective action(s). Documentation is required for processing claims.
- Bring the subfloor to an acceptable condition using appropriate smoothing and levelling compounds. For wood subfloors use approved underlayment panels. Install surface preparation materials according to the manufacturers' instructions and ensure a smooth surface to prevent any irregularities or roughness from telegraphing through the new flooring. If the subfloor or underlayment material beneath the resilient flooring fails, responsibility for warranties and/or performance guarantees rests with the underlayment manufacturer or contractor.

Installation Procedures

- Inspect each tile for visual defects before installing.
- Installation of flooring implies acceptance of materials.
- Acclimatise Amtico Signature products, adhesive and subfloor to a stable condition between 18°C - 27°C (64°F - 81°F) for a minimum of 24 hours before, during and after installation. For best results and in particular when extreme temperature conditions exist, increase the acclimatisation to a minimum of 48 hours.
- Apply recommended Amtico adhesive according to label instructions. Adhesive selection should be appropriate to site conditions - see adhesive labels for more detailed information. Amtico will not be held responsible for any installation complaints if a non-recommended adhesive is used.
- The floor must be rolled using a 45 kg three-section roller in both directions.
- The finished floor should be protected from point loads and heavy traffic for 24 hours after installation and should not be washed for 48 hours.

Routine Maintenance

- Daily sweep or dust mop the floor and clean up all spills immediately.
- Perform damp mopping or machine cleaning (<450 rpm) as necessary. For routine everyday cleaning, use Amtico Maintainer or equivalent. For periodic cleaning, use Amtico Stripper or equivalent and Amtico Dressing.
- When machine cleaning, use a 3M red pad or equivalent.
- Do not use household washing liquids or detergents as they may leave a sticky or slippery residue on the floor if not thoroughly rinsed.
- Avoid cleaners that contain abrasives or solvents that may permanently damage the floor.
- For more detailed instructions, refer to Amtico Wear & Care at amtico.com

Periodic Maintenance

- Use stripper to remove ground in-dirt and old or worn coats of dressing.
- Apply dressing if desired or as necessary. Follow the instructions for proper usage and application.

Caution

When kept clean and dry, Amtico Design Tile products have excellent slip-resistant properties. However, in common with other smooth floor coverings, water, other liquids, grease and other contaminants on the surface of the floor can make them slippery.

For further technical information please visit amtico.com/commercial/installation

Adhesives

Amtico SF Adhesive (UK)

An EC1 Plus-certified, water-based acrylic adhesive with a working time of up to one hour, recommended for use in all areas except those subject to heat and moisture.
2.5, 5 and 15 litres

Amtico SF Plus Adhesive (Europe)

An EC1 Plus-certified, water-based acrylic adhesive recommended for all areas except those subject to heat or moisture.
14kg

Amtico PS Adhesive (UK)

PS Adhesive is a water-based acrylic adhesive that has an extended working time of up to three hours and is recommended for all areas except those subject to heat or moisture.
3, 6 and 14kgs

Amtico International HT Adhesive (UK & Europe)

HT Adhesive is a single-part, wet-set, water-based acrylic adhesive that has very good temperature resistance. It has a working time of up to 30 minutes and is classified as EC1 Plus. It is recommended for areas subject to some heat variations, such as conservatories and areas receiving direct sunlight. It is also suitable for use where underfloor heating has been installed.
5 and 15 litres

Amtico HT Extra Adhesive (UK & Europe)

An EC1 Plus-certified single-part, water-based acrylic adhesive that has very good temperature resistance and improved grab, with a working time of up to 20 minutes. Recommended for areas subject to some heat variations, such as conservatories and adjacent to sunny windows. It is also suitable for use where underfloor heating has been fitted.
14kg

Amtico Universal 2-Part Adhesive (UK & Europe)

Universal 2-Part Adhesive is a wet-set adhesive that can be used for bonding Amtico Design Tile products in wet areas such as bathrooms.

It may also be used for high-temperature areas. Universal 2-Part has a working time of 40-60 minutes, is entirely solvent free and classified as EC1 Plus with respect to very low VOC emissions.
6kg

Use of Amtico Adhesives

Follow the instructions on the labelling, paying particular attention to the pot life and working times. Spread adhesives evenly using a trowel with notch size 1.8x1.2x1.65 (Euro A2). Do not use worn trowels. Only spread sufficient adhesive that can be covered within the recommended open time. The tiles should be rolled with a 45kg roller as soon as possible after installing and before the adhesive sets; timing will depend on site conditions and adhesive selection. Always clean away excess adhesive before it is allowed to dry; use a soft cloth moistened with adhesive remover.

Wear and Care Advice

Product Care

- Avoid using aerosol sprays and other silicone-based products as overspray can leave a residue and make the floor slippery.
- Use entrance matting at all external doorways. This will help reduce the chance of water, excess grit, dirt, small stones and other debris being walked onto the floor. Some rubber-backed matting can cause permanent staining.
- Spillages should be wiped up immediately. Residues of oils and greases are potential slip hazards; the affected area should be cleaned thoroughly with a neutral cleaner or our ready-to-use spillage remover.
- Avoid contact with rubber, asphalt, some paints and shoe polishes, which can potentially stain your floor.
- Do not allow cigarettes, matches or other hot items to be deposited on the floor as permanent damage is likely to occur.
- Do not use steam mops as these may damage the tiles or cause adhesives to fail.
- Amtico products have good scratch-resistance properties. However sharp edges on some items of furniture can damage your floor. Care should also be taken when using vacuum cleaners, as they may scratch your floor.
- The use of furniture cups, felt pads or glides are essential to help reduce the risk of your floor being scratched.
- Do not drag heavy items of furniture across the floor as this will result in serious scratch marks. Care should be taken with a new floor when furniture and other appliances are being fitted or placed back into the space.
- Castors, furniture cups and other means of load spreading will help reduce the risk of indentation to the floor when used under heavy load-bearing furniture and appliances.
- We do not advocate the use of other cleaning products, as they may not work as efficiently or effectively, and may cause damage to the floor or leave the surface with a slippery residue.

Our ethos is to combine creativity and innovation with the highest levels of quality – design, manufacturing, product and service.

	<p>The Amtico Signature range is verified and certified as A+ on the BRE Global Green Guide Online for use in retail, domestic, education, commercial, healthcare, industrial, hospitality and leisure sectors.</p>		<p>Amtico Signature products have received the NF mark of quality issued by the CSTB (French Standards organization) and have been UPEC classified, therefore conforming to local French legislation.</p>
	<p>Amtico Signature products comply with German building regulations as certified by DIBT.</p>		<p>The CE mark is a confirmation by Amtico that our products are in compliance with European health, safety and environmental requirements (as required by Council Directive 89/106/EEC and detailed in EN 14041).</p>
	<p>Amtico is a member of the professional association for flexible floor covering manufacturers in Germany.</p>		<p>Amtico International GmbH is a member of the DGNB German Sustainable Building Council.</p>
	<p>Our quality system complies with BS EN ISO9001 and is certified by LRQA.</p>		<p>Amtico products comply with BSI ISO 14001 environmental standards.</p>
	<p>Amtico Signature products are third party certified for low-VOC emissions contributing towards good indoor air quality.</p>		<p>SOL PVC Pro is the French professional organisation of PVC flooring manufacturers; standing for their shared values and commitments related to environment, comfort, regulation and communication.</p>
	<p>Amtico Signature products are manufactured using both phthalate free and bio-based plasticisers except for recycled content.</p>		<p>Amtico International partenaire de Sols Pvc^{PRO}</p>



20YR COMMERCIAL WARRANTY

WARRANTY

All Amtico Signature products come with an Amtico commercial product warranty against wear-out. For full details visit amtico.com/commercial/warranty

amtico
makes it
possible

**Amtico UK &
European Sales**

Solar Park Southside
Solihull, West Midlands
B90 4SH
+44 (0) 121 745 0800
samples@amtico.com

Amtico Head Office

Kingfield Road
Coventry
CV6 5AA
+44 (0) 24 7686 1400
samples@amtico.com

**Amtico International
Germany**

Im Taubental 11
41468 Neuss
+49 (0) 2131 359 16 0
info@amtico.de

**Amtico International
France**

12 Rue Pernelle
75004 Paris
+33 (0) 1 55 38 95 70
info@amtico.fr

**Amtico International
Sweden**

Isafjordsgatan 22
164 40 Kista
+46 (0) 8 584 233 24
info@amtico.se

Amtico International Asia

Unit 1907, 19th Floor
Paul Y. Centre
51 Hung To Road, Kwun Tong
Kowloon, Hong Kong
+852 2327 7703
samples@amtico.com

**Amtico International
Middle East, Africa & India**

8th Floor
Building Number 2
J&G DMCC, Dubai, UAE
+44 (0) 121 745 0800
samples@amtico.com

amtico.com

Visit amtico.com for more information on our product range, inspiring ideas, maintenance and installation advice. Every effort is made to achieve accurate reproduction of products in this brochure, however printing limitations can be misleading. Selection of products should be made from actual samples. Samples are small pieces cut from standard tiles. They give only a general indication of the design. Tone and shading can vary slightly from batch to batch and it is not possible to guarantee that the sample will exactly match the material supplied. The policy of the Company is one of continuous development and improvement and the right is reserved to add or delete from the range or change patterns without prior notification. All metric sizes are rounded. All products are manufactured in line with EN649, EN ISO 10582. Brochure correct at the time of printing.

amtico
makes it
possible

MLIT.BRU.R6