



AMTICO  
DESIGN TILE



SPACIA

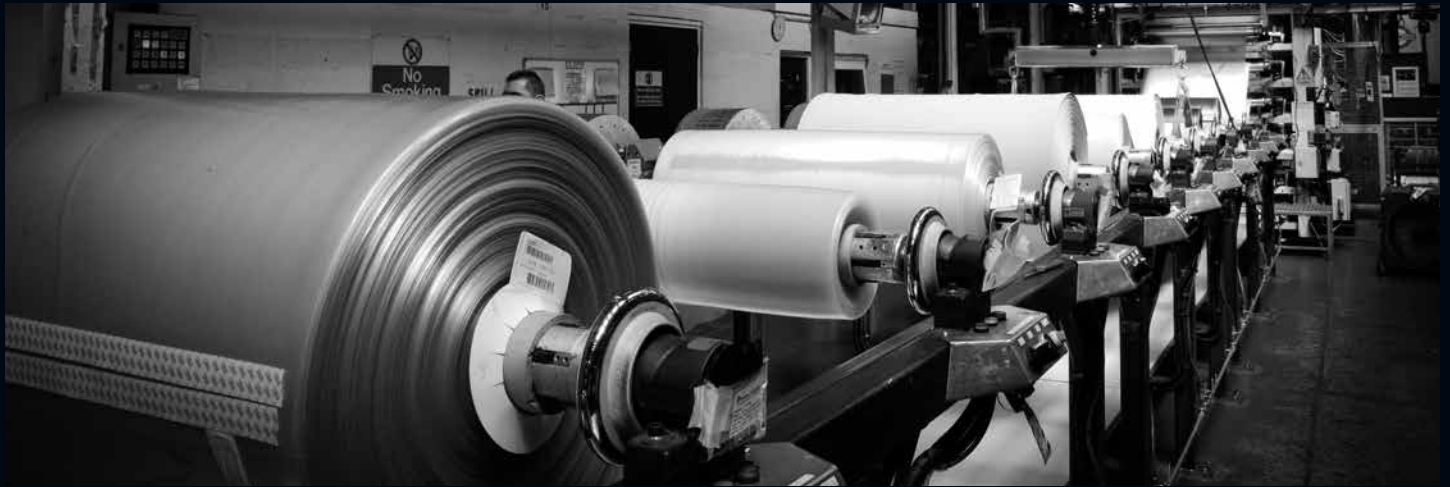


## CELEBRATING 50 YEARS OF GROUNDBREAKING BRITISH MANUFACTURING AND DESIGN.



Since 1964, Amtico has been the driving force behind innovative flooring design. Our specialist design team travel the world gathering inspiration which is translated into exquisite collections by our team of UK based manufacturing experts.

As it was then and still is today-our goal is to push the boundaries, never compromising on styling, performance, service and manufacturing quality to constantly deliver beautiful, practical and timeless floorcoverings to help you turn your design vision into reality.



"THE CAPABILITIES OF THE IN-HOUSE  
MANUFACTURING TEAM ENABLE  
THE DESIGN TEAM TO CONSTANTLY  
PUSH THE BOUNDARIES OF WHAT IS  
POSSIBLE IN FLOORING DESIGN."

Karen Quarterman, Product Designer







Delivering exceptional quality, durability and creative scope, our Amtico Spacia range has expanded to welcome 26 new design-led flooring products, highly suited to commercial environments and high-traffic spaces.

Each design encourages single use application or product combination – ideal for creating feature areas. Texture has been introduced to our stone range, bold decorative elements and accent colours have been added to our abstracts, while our popular wood collection has grown to incorporate distinctive new grains and vibrant cool and warm colour highlights. When applied to interior environments, the result is beautifully atmospheric flooring, evocative of natural materials – full of nuance and life.

## CONTENTS

02	MANUFACTURING & DESIGN
06	COMMERCIAL APPLICATIONS
14	WOOD
24	STONE
28	ABSTRACT
32	PRODUCT SWATCHES
42	PRODUCT AVAILABILITY
45	AMTICO STRIPPING
46	TECHNICAL INFORMATION
48	CONTACT AMTICO

White Horse is a newly built medical centre located in Wiltshire. The building boasts a fresh and sleek design, which the medical centre was keen to reflect throughout from the floor to the walls. It was important to incorporate the modern concept into the flooring design, along with the introduction of warm and calming tones to create a relaxing, patient-friendly environment.

With this in mind Amtico Spacia Traditional Oak and Bias Travertine Oyster were selected for the project. Debbie Riddiford, Managing Partner explains: "We needed a built for purpose flooring product that could be used in a busy public space. Amtico Spacia products have a durable and robust finish, which is perfect for a waiting room that see's lots of visitors each day. The product is high quality and easy to clean too, which is absolutely key for a medical centre".









PRODUCTS USED: CERAMIC FROST, CERAMIC COAL AND SUN BLEACHED OAK



## STUDENT ACCOMMODATION



For over 35 years St Andrew's church on Liverpool's iconic Rodney Street has been empty and in need of renovation. Purchased by Middle England Developments in 2011 it has now been restored and has been given a new life as student accommodation.

The Grade II listed building has been given a complete makeover inside and out. It's interiors are contemporary and feature all the mod cons any university student would need from Wi-Fi to an onsite gym.

Local flooring firm GDF were tasked with the installation in communal areas and student quarters. "Amtico has a fantastic reputation and from the clients point of view, they had a great choice of product collections which suited their need for a good looking floor that would require low maintenance and cleaning and withstand student life. They chose a light commercial product, Amtico First, for the bedrooms and kitchens and for the high traffic areas such as the atrium and corridors, they used Amtico Spacia. All in all, a great range of products that offer both aesthetics and performance. Both ourselves and the client were extremely happy with the end result." Gary Dixon of GDF

As part of the rebuild and modernisation programme of the German hotel, Traube Tonbach, the owners and architects chose flooring from the Amtico Spacia range to perfectly complement the décor of the Kohlwald guest house.

Situated in the romantic Black Forest, this 5 star hotel is one of Europe's most exquisite resorts with each room having a unique view of the wooded mountain range.

The team wished to reflect the harmony of the outdoor forest with the calm, sophisticated interior of the hotel and selected our durable, high quality Spacia Weathered Oak.





PRODUCT USED: WEATHERED OAK. Image courtesy of Hotel Traube Tonbach.



## RETAIL



PRODUCTS USED: WAVE SLATE BLACK AND CERAMIC LIGHT



The Post Office launched the largest network investment and support programme in its history - a £1.34bn, 3 year initiative to provide a consistent, modern and convenient retail experience for customers across 6,000 Post Offices.

The flooring product selected had to perform against specific criteria. It had to be hard-wearing and retain its appearance over a long time period. It also had to be easy to maintain and provide a consistently uniform design.

Spacia Wave Slate Black and Ceramic Light offers a simple solution that allows the clear delineation between counter/queuing areas and the rest of the retail area.

Additionally the benefits of working with a UK flooring manufacturer prepared to hold stock ensures timely product supply in line with the Post Office refresh schedule.



WOOD





# ADMIRAL OAK

The look and feel of natural grain contrasts with an atmospheric neutral wash to deliver a fresh twist on a classic look.

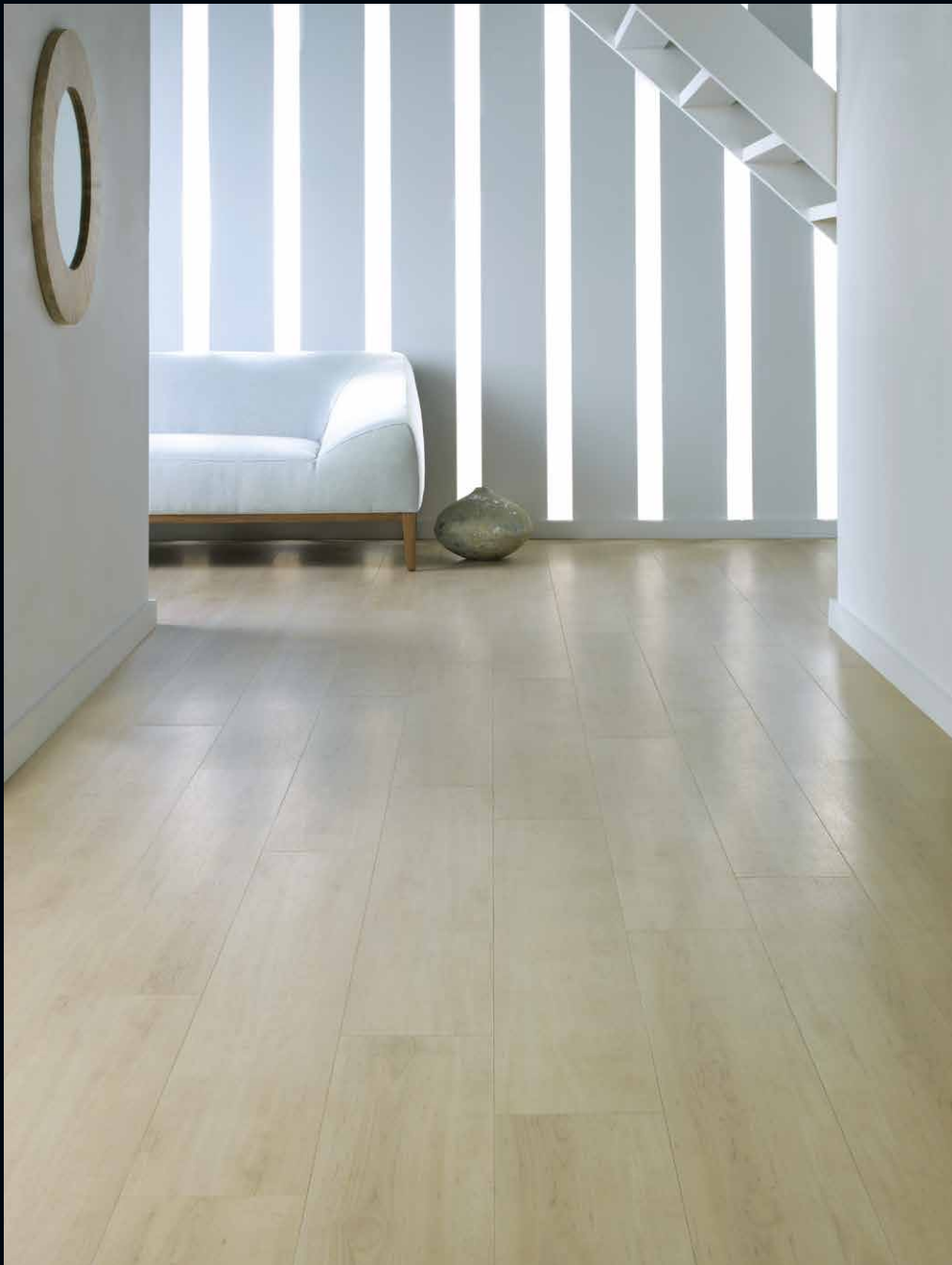
Wood | Dark

# DUSKY WALNUT

Featuring a sweeping grey linear grain, Dusky Walnut can transform any space into something beautiful and elegant.

Wood | Dark





# WHITE MAPLE

Pure, clean maple finish, defined by a detailed smooth grain and cool toned finish. This light contemporary wood creates a welcoming space for a fresh, calm environment.

Wood | Neutral





# CANOPY OAK

With all the charm of natural wood, Canopy Oak blends a pale golden colour palette and vanilla highlights with characterful knots for a distinctive look.

Wood | Golden

# EDEN OAK

The look and feel of natural grain contrasts with an atmospheric neutral wash to deliver a fresh twist on a classic look.

Wood | Golden





# PALE CHERRY

Mid-honey in tone, Pale Cherry  
will add character to any space.

Wood | Warm





# CLASSIC CHERRY

The sophisticated pattern and tones of cherry wood are achieved in Classic Cherry – a timeless design that will provide the backdrop for warm, inviting environments.  
Wood | Warm



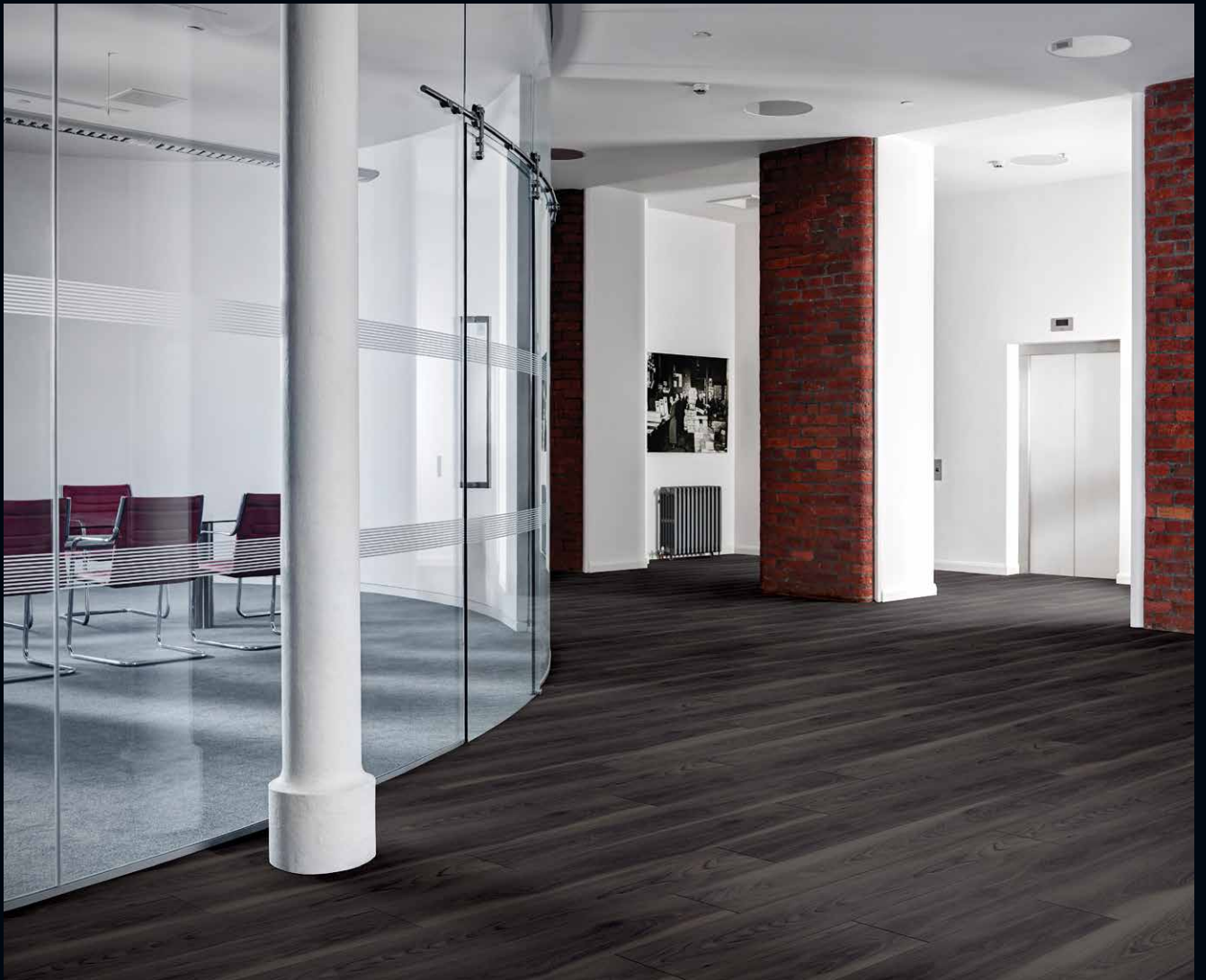


# EMBER OAK

With its dark, sumptuous brown tones and stunning sense of depth, Ember Oak is the perfect choice for those looking to capture the look and feel of wood.

Wood | Warm





## INKED CEDAR

Fusing lively grain detailing with an eye-catching palette of smoky shades, Inked Cedar offers a rustic look with a sleek high grade finish.  
Wood | Dark



STONE



## OCEAN TRAVERTINE + CERAMIC ECRU

A subtle dark to mid-grey stone with hints of blue tones, Ocean Travertine excels whatever the application. Partner with other products, including Ceramic Ecrú, to create varied patterns that capture your style.

Stone | Neutral

# DRY STONE SIENNA

Organic surface design with an earthy, embossed mottling. An ideal base for many types of aesthetic, this versatile stone brings natural appeal and warmth to a range of interiors.

Stone | Warm



# LINEAR STONE SHALE

Drawing inspiration from the latest trends, Linear Stone Shale has sophisticated linear detailing in a pale grey finish – it's a stylish addition to the range.  
Stone | Neutral







## WAVE SLATE BLACK

Wave Slate Black is our darkest stone  
and pairs soft flowing movement with  
contemporary cool.

Stone | Cool

ABSTRACT

I *Think* I CAN

## ZEPHYR + MISTRAL

Combine the creamy base and pale grey chevron detail of Zephyr with the rich, mocha tones and sinuous detailing of Mistral for a perfectly defined space full of movement and character.





# MIRUS FEATHER

Ideal for bringing a sense of depth and understated charm to interior spaces, Mirus Feather offers a soft grey palette, delicate patterning and dynamic flashes of light and shade.



# PLATINUM

With the look of ceramic flooring, this pale grey design offers a simple elegant solution creating a delicate impression in any interior space.





# MIRUS INDIGO + METROPOLIS ICE

The arresting combination of deep indigos, blue greys and faded denim hues make Mirus Indigo a perfect partner for the cool, silver palette and worn metal feeling of Metropolis Ice.

# WOOD | NEUTRAL



White Oak

SS5W2548



Pale Maple

SS5W2501



White Ash

SS5W2540



White Maple

SS5W2654



Worn Ash

SS5W2539



Featured Oak

SS5W2533



Sun Bleached Oak

SS5W2531



Dry Cedar

SS5W2535



Bleached Elm

SS5W2516



Rustic Limed Wood

SS5W2650

For product size availability please refer to pages 42-44



# WOOD | GOLDEN



Eden Oak

SS5W1010



Limed Wood Natural

SS5W2549



Pale Ash

SS5W2518



Engineered Bamboo

SS5W2546



Canopy Oak

SS5W1020



Honey Oak

SS5W2504



New England Oak

SS5W2527



Sherwood Oak

SS5W2532



Royal Oak

SS5W2530



Traditional Oak

SS5W2514

# WOOD | WARM



Warm Maple

SS5W2502



Pale Cherry

SS5W2525



Smoothbark Hickory

SS5W2545



Warm Walnut

SS5W2543



Classic Cherry

SS5W2510



Warm Cherry

SS5W2506



Brown Oak

SS5W2529



Antique Oak

SS5W2507



Exotic Walnut

SS5W2541



Black Walnut

SS5W2534



Rustic Barn Wood

SS5W2513



Ember Oak

SS5W2512

For product size availability please refer to pages 42-44



# WOOD | DARK



Nordic Oak

SS5W2550



Weathered Oak

SS5W2524



Smoked Timber

SS5W2652



Smoked Cedar

SS5W2536



Dusky Walnut

SS5W2542



Aged Timber

SS5W2651



Admiral Oak

SS5W2551



Spiced Timber

SS5W2322



Port Oak

SS5W2311



Inked Cedar

SS5W2552



Cellar Oak

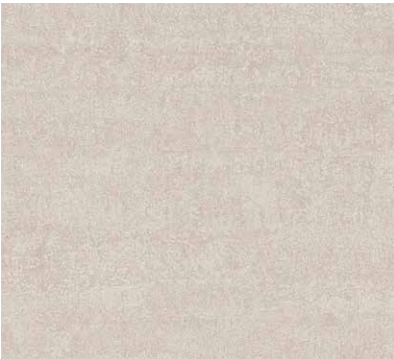
SS5W2333



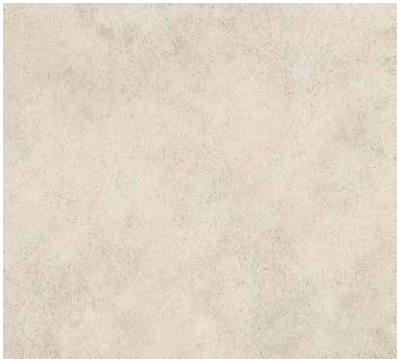
# STONE | NEUTRAL



Ceramic Frost SS5S1591



Sift Stone Canvas SS5S6133



Limestone Cool SS5S1561



Ceramic Light SS5S1565



Bottocino Grey SS5S3598



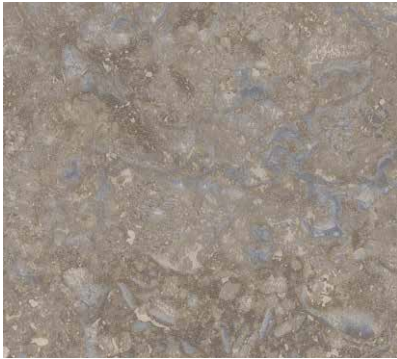
Ceramic Ecru SS5S3592



Linear Stone Shale SS5S3606



Pale Grey Slate SS5S3601



Ocean Travertine SS5S3600

For product size availability please refer to pages 42-44

# STONE | WARM



Crema Travertine SS5S1589



Bias Travertine Oyster SS5S3595



Botticino Cream SS5S4599



Dry Stone Alba SS5S4401



Dry Stone Sienna SS5S4408



Jura Stone SS5S7401



Noche Travertine SS5S4590



Summer Slate SS5S4603



Bias Travertine Sand SS5S4596



Desert Sandstone SS5S4607



Dry Stone Loam SS5S4434



Dry Stone Cinder SS5S4433



# STONE | COOL



Ceramic Dark SS5S3566



Monmouth Slate SS5S7501



Ceramic Flint SS5S2594



Ceramic Sable SS5S3593



Sift Stone Clay SS5S6123



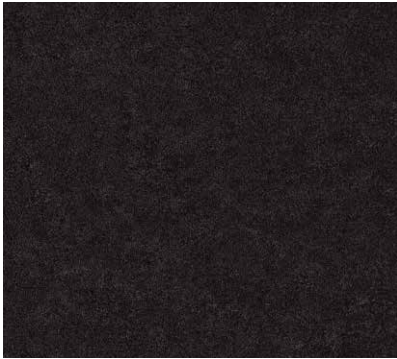
Wave Slate Black SS5S2602



Linear Stone Peat SS5S4605



Sift Stone Graphite SS5S6113



Ceramic Coal SS5S4422

For product size availability please refer to pages 42-44



# ABSTRACT



Mirus Cotton

SS5A6110



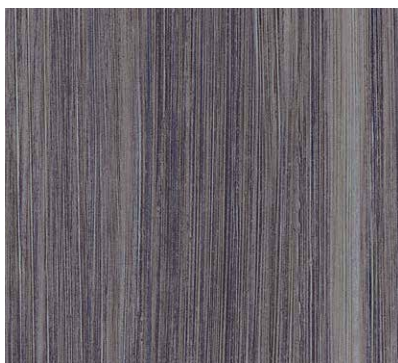
Mirus Feather

SS5A6120



Mirus Hemp

SS5A6130



Mirus Indigo

SS5A6140



Mirus Henna

SS5A6150



Mirus Ebony

SS5A6160

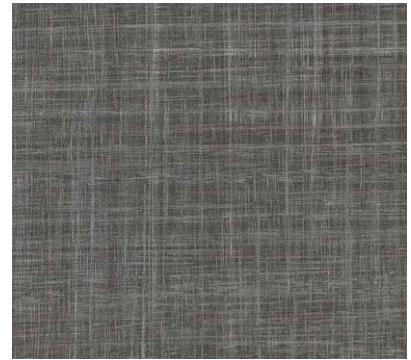
# ABSTRACT



Softline Pebble SS5A3802



Linen Weave SS5A3800



Satin Weave SS5A3805



Softline Coco SS5A4201



Silk Weave SS5A2801



Velvet Weave SS5A2101



Softline Ink SS5A9201



Softline Charcoal SS5A2803

For product size availability please refer to pages 42-44

# ABSTRACT



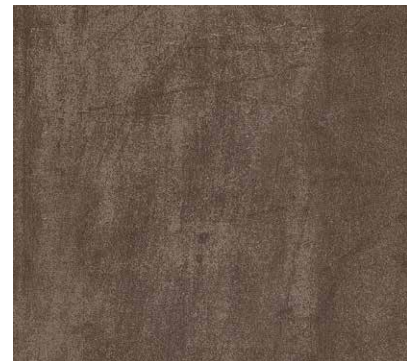
Platinum

SS5A3610



Zinc

SS5A3620



Bronze

SS5A4805



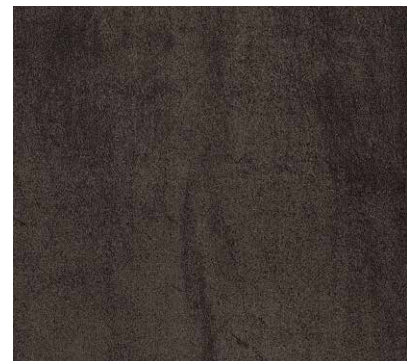
Metropolis Ice

SS5A2617



Metropolis Smoke

SS5A2627



Steel

SS5A2804



Zephyr

SS5A3401



Mistral

SS5A3402



Sumatra

SS5A3403



# PRODUCT AVAILABILITY | WOOD

Product Name	Product Code	Surface Finish	Plank & Tile sizes (straight grain)					Plank & Tile sizes (cross grain)		
			102 x 915mm (4" x 36")	Xtra 185 x 1220mm (7.25" x 48")	305 x 305mm (12" x 12")	305 x 457mm (12" x 18")	457 x 457mm (18" x 18")	102 x 915mm (4" x 36")	Xtra 185 x 1220mm (7.25" x 48")	305 X 457mm (12" x 18")
Admiral Oak	SS5W2551	Barnwood	•	•						
Aged Timber	SS5W2651	Barnwood	•	•						
Antique Oak	SS5W2507	Tick	•	•						
Black Walnut	SS5W2534	Tick	•	•						
Bleached Elm	SS5W2516	Tick	•	•						
Brown Oak	SS5W2529	Tick	•	•						
Canopy Oak	SS5W1020	Tick	•	•						
Cellar Oak	SS5W2333	Barnwood	•	•						
Classic Cherry	SS5W2510	Tick	•	•						
Dry Cedar	SS5W2535	Barnwood	•	•						
Dusky Walnut	SS5W2542	Tick	•	•						
Eden Oak	SS5W1010	Tick	•	•						
Ember Oak	SS5W2512	Natural Grain		•						
Engineered Bamboo	SS5W2546	Tick		•				•		
Exotic Walnut	SS5W2541	Tick	•	•						
Featured Oak	SS5W2533	Tick	•	•						
Honey Oak	SS5W2504	Tick	•	•						
Inked Cedar	SS5W2552	Tick	•	•						
Limed Wood Natural	SS5W2549	Tick	•	•						
New England Oak	SS5W2527	Tick	•	•						
Nordic Oak	SS5W2550	Tick	•	•						
Pale Ash	SS5W2518	Tick	•	•						
Pale Cherry	SS5W2525	Tick	•	•						
Pale Maple	SS5W2501	Tick	•	•						
Port Oak	SS5W2311	Barnwood	•	•						
Royal Oak	SS5W2530	Tick	•	•						
Rustic Barn Wood	SS5W2513	Barnwood	•	•						
Rustic Limed Wood	SS5W2650	Tick	•	•						
Sherwood Oak	SS5W2532	Tick	•	•						
Smoked Cedar	SS5W2536	Barnwood	•	•						
Smoked Timber	SS5W2652	Barnwood	•	•						
Smoothbark Hickory	SS5W2545	Tick	•	•						
Spiced Timber	SS5W2322	Barnwood	•	•						
Sun Bleached Oak	SS5W2531	Barnwood	•	•						
Traditional Oak	SS5W2514	Tick	•	•						
Warm Cherry	SS5W2506	Tick	•	•						
Warm Maple	SS5W2502	Tick	•	•						
Warm Walnut	SS5W2543	Tick	•	•						
Weathered Oak	SS5W2524	Barnwood	•	•						
White Ash	SS5W2540	Barnwood	•	•						
White Maple	SS5W2654	Tick	•	•						
White Oak	SS5W2548	Tick	•	•						
Worn Ash	SS5W2539	Barnwood	•	•						

All box sizes are 2.5m with the exception of Xtra sized planks 185 x 1220mm which are 2m per box.

# PRODUCT AVAILABILITY | STONE

Product Name	Product Code	Surface Finish	Plank & Tile sizes (straight grain)					Plank & Tile sizes (cross grain)		
			102 x 915mm (4" x 36")	Xtra 185 x 1220mm (7.25" x 48")	305 x 305mm (12" x 12")	305 x 457mm (12" x 18")	457 x 457mm (18" x 18")	102 x 915mm (4" x 36")	Xtra 185 x 1220mm (7.25" x 48")	305 X 457mm (12" x 18")
Bias Travertine Oyster	SS5S3595	Ceramic			•	•	•			
Bias Travertine Sand	SS5S4596	Ceramic			•	•	•			
Botticino Cream	SS5S4599	Ceramic			•	•	•			
Botticino Grey	SS5S3598	Ceramic			•	•	•			
Ceramic Coal	SS5S4422	Ceramic			•	•	•			
Ceramic Dark	SS5S3566	Ceramic			•	•	•			
Ceramic Ecru	SS5S3592	Ceramic			•	•	•			
Ceramic Flint	SS5S2594	Ceramic			•	•	•			
Ceramic Frost	SS5S1591	Ceramic			•	•	•			
Ceramic Light	SS5S1565	Ceramic			•	•	•			
Ceramic Sable	SS5S3593	Ceramic			•	•	•			
Crema Travertine	SS5S1589	Ceramic			•	•	•			
Desert Sandstone	SS5S4607	Ceramic			•	•				
Dry Stone Alba	SS5S4401	Deep Ceramic			•	•	•			
Dry Stone Cinder	SS5S4433	Deep Ceramic			•	•	•			
Dry Stone Loam	SS5S4434	Deep Ceramic			•	•	•			
Dry Stone Sienna	SS5S4408	Deep Ceramic			•	•	•			
Jura Stone	SS5S7401	Ceramic			•	•	•			
Limestone Cool	SS5S1561	Ceramic			•	•	•			
Linear Stone Peat	SS5S4605	Ceramic			•	•				
Linear Stone Shale	SS5S3606	Ceramic			•	•				
Monmouth Slate	SS5S7501	Riven			•	•	•			
Noche Travertine	SS5S4590	Ceramic			•	•	•			
Ocean Travertine	SS5S3600	Ceramic			•	•	•			
Pale Grey Slate	SS5S3601	Riven			•	•	•			
Sift Stone Canvas	SS5S6133	Deep Ceramic			•		•			
Sift Stone Clay	SS5S6123	Deep Ceramic			•		•			
Sift Stone Graphite	SS5S6113	Deep Ceramic			•		•			
Summer Slate	SS5S4603	Riven			•	•	•			
Wave Slate Black	SS5S2602	Riven			•	•	•			

All of the products above are 2.5m to a box.

For samples or for further advice please call 0121 745 0800 or email [samples@amtico.com](mailto:samples@amtico.com)

# PRODUCT AVAILABILITY | ABSTRACT

Product Name	Product Code	Surface Finish	Plank & Tile sizes (straight grain)					Plank & Tile sizes (cross grain)		
			102 x 915mm (4" x 36")	Xtra 185 x 1220mm (7.25" x 48")	305 x 305mm (12" x 12")	305 x 457mm (12" x 18")	457 x 457mm (18" x 18")	102 x 915mm (4" x 36")	Xtra 185 x 1220mm (7.25" x 48")	305 X 457mm (12" x 18")
Bronze	SS5A4805	Ceramic				•				
Linen Weave	SS5A3800	Ceramic					•			
Metropolis Ice	SS5A2617	Ceramic			•	•	•			
Metropolis Smoke	SS5A2627	Ceramic			•	•	•			
Mirus Cotton	SS5A6110	Ceramic	•	•						•
Mirus Ebony	SS5A6160	Ceramic	•	•						•
Mirus Feather	SS5A6120	Ceramic	•	•						•
Mirus Hemp	SS5A6130	Ceramic	•	•						•
Mirus Henna	SS5A6150	Ceramic	•	•						•
Mirus Indigo	SS5A6140	Ceramic	•	•						•
Mistral	SS5A3402	Ceramic	•			•				
Platinum	SS5A3610	Ceramic				•				
Satin Weave	SS5A3805	Ceramic					•			
Silk Weave	SS5A2801	Ceramic					•			
Softline Pebble	SS5A3802	Ceramic					•		•	
Softline Charcoal	SS5A2803	Ceramic					•		•	
Softline Coco	SS5A4201	Ceramic					•		•	
Softline Ink	SS5A9201	Ceramic					•		•	
Steel	SS5A2804	Ceramic				•				
Sumatra	SS5A3403	Ceramic	•			•				
Velvet Weave	SS5A2101	Ceramic					•			
Zephyr	SS5A3401	Ceramic	•			•				
Zinc	SS5A3620	Ceramic				•				

All of the products above are 2.5m to a box.  
For samples or for further advice please call 0121 745 0800 or email [samples@amtico.com](mailto:samples@amtico.com)



# AMTICO STRIPPING

The standard stripping options for Spacia are shown below and have a 3 mm width. However other widths are available to order from the Signature range (excluding fiber products).\*






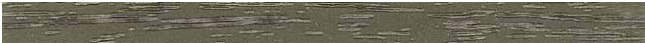










3 x 915mm (2mm thickness)

6 x 915mm (2mm thickness)

9 x 915mm (2mm thickness)

13 x 915mm (2mm thickness)

19 x 915mm (2mm thickness)




	Pure Plain White	AR0APN11		Gold	AR0AMP78
	Cirrus Air	AR0W8100		Silver	AR0AMP38
	Mirabelle Crème	AR0SMB14		Bronze	AR0AMP18
	Stria Mineral	AR0SMS15		Composite Flint	AR0SGN32
	Fused Birch (cross grain)	AR0W7500		Shimmer Denim	AR0ASE39
	Concrete Pale	AR0SCN30		Wild Walnut (cross grain)	AR0W7620
	Mica Mix Bisque	AR0SMM42		Wenge Wood (cross grain)	AR0W7490
	American Oak (cross grain)	AR0W7050		Pure Plain Black	AR0APN22

\*Sizes shown are not actual size

All of the products above are available from stock in 3 x 915mm. 36 strips per box. Other products are available as stripping in 3 x 915mm, 6 x 915mm, 9 x 915mm, 13 x 915mm & 19 x 915mm. Lead times apply.

# TECHNICAL SPECIFICATION

The floor covering selected belongs to the Amtico Design Tile family of luxury vinyl tiles (LVT), manufactured from several layers that have been laminated together, and commonly incorporating a printed film design layer. Products are supplied with bevelled edges. Tiles should be installed using Amtico adhesives.

Name	Standard	Symbol	Result
Usage Classification	EN 685 EN ISO 10874		23, 33, 42
Manufacturing Standard	EN 649 EN ISO 10582		Pass
Total Thickness	EN 428 EN ISO 24346		2.5 mm
Wear Layer Thickness	EN 429 EN ISO 24340		0.55 mm
Weight	EN 430 EN ISO 23997		3,400 g/m <sup>2</sup>
Abrasion Resistance	EN 649 EN ISO 10582		Group T Type 1
Residual Indentation	EN 433 EN ISO 24343-1		≤ 0.1 mm
Dimensional Stability	EN 434 EN ISO 23999		≤ 0.25 %
Curling	EN 434 EN ISO 23999		≤ 2 mm
Flexibility	EN 435 EN ISO 24344 method A		Pass
Slip Resistance	DIN 51130 EN 13893		R10* Class DS
Chemical Resistance	EN 423 EN ISO 26987		Excellent
Light Stability	ISO 105 B02		6 or better
Flammability / Smoke Emissions	EN13501-1		B <sub>fl</sub> -s1
Castor Chair Resistance	EN 425		Pass
Sound Reduction	ISO 140-8		3 dB
Thermal Resistance	EN 12664		0.013 m <sup>2</sup> K/W (underfloor heating suitable)
Electrostatic Performance	ISO 6356 EN 1815		≤ 2 kV
Emissions	DiBT/AgBB AFSSET & labelling		Pass Pass & A+
Surface Treatment			Urethane

\*For safety flooring with long-term retention of slip resistance refer to the Amtico Assura range.



Amtico Spacia products are manufactured using both phthalate free\* and biobased plasticisers.  
\*Except for recycled content



Amtico Spacia products correspond to the BRE Global Green Guide on-line generic specification for printed laminate polyvinyl chloride floor coverings which achieves a summary rating of A+ when used in healthcare, retail and education and A in commercial and residential building types.

# ADHESIVES

## AMTICO SF ADHESIVE

SF Adhesive is a water-based acrylic adhesive with a working time of 1 hour that is recommended for use in all areas except those subject to heat and moisture.

## AMTICO PS ADHESIVE

PS Adhesive is a very low emissions (EC1 Plus), water-based acrylic adhesive that has an extended working time of 3 hours and is recommended for all areas except those subject to heat or moisture.

## AMTICO HT ADHESIVE

HT Adhesive is a single-part, wet-set water-based acrylic adhesive that has very good temperature resistance; it has a working time of 30 minutes. It is recommended for areas subject to some heat variations, such as conservatories and areas receiving direct sunlight. It is also suitable for use where underfloor heating has been installed.

## AMTICO UNIVERSAL 2-PART ADHESIVE

Universal 2-Part Adhesive is a wet-set adhesive that can be used for bonding Amtico Design Tiles in wet areas such as bathrooms. It may also be used for high temperature areas. Universal 2-Part has a working time up to 60 minutes, is entirely solvent free and classified as EC1R Plus with respect to very low VOC emissions.

For the latest installation and maintenance information please visit [www.amtico.com](http://www.amtico.com)

# AREAS OF USE

Office, business, hospitality & leisure, education, healthcare, retail and housing.

# INSTALLATION

Installation must be carried out in accordance with the requirements of the relevant national standard and the Amtico Products Technical Manual – the latest information is available at [www.amtico.com](http://www.amtico.com). The surface must be flat, smooth, dry and fit for purpose. Levelling compounds should be used as recommended. Tiles and subfloor must be allowed to stabilize to a constant temperature between 18° and 27°C for a period of 24 hours prior to, during and 24 hours after installation. Underfloor heating must be switched off for 48 hours before, during and 48 hours after installation. The tiles should be stored flat. Amtico adhesives are recommended for installing tiles. The completed installation should be rolled with a 45 kg roller before the adhesive hardens.

# MAINTENANCE

Maintenance should be carried out in accordance with the recommendations of the Amtico Products Technical Manual – the latest information is available at [www.amtico.com](http://www.amtico.com). The urethane surface treatment facilitates the removal of scuff marks. Cleaning products and entrance matting designed for use with Amtico products are available from Amtico International. Maintenance should involve simple dust mopping, wet mopping, spray cleaning or scrubber-drying with a neutral detergent. The application of a floor dressing is not necessary, although this can be carried out to provide additional protection if desired.



Visit [amtico.com](http://amtico.com) for more information on our product range, inspiring ideas, maintenance and installation advice.

Every effort is made to achieve accurate reproduction of products in this brochure, however printing limitations can be misleading. Selection of products should be made from actual samples. Samples are small pieces cut from standard tiles. They give only a general indication of the design. Tone and shading can vary slightly from batch to batch and it is not possible to guarantee that the sample will exactly match the material supplied. The policy of the Company is one of continuous development and improvement and the right is reserved to add or delete from the range or change patterns without prior notification. All metric sizes are rounded. All products are manufactured in line with EN649.





Amtico UK & European Sales  
Solar Park Southside  
Solihull, West Midlands  
B90 4SH  
+44 (0) 121 745 0800  
[samples@amtico.com](mailto:samples@amtico.com)

Amtico Head Office  
Kingfield Road  
Coventry  
CV6 5AA  
+44 (0) 24 7686 1400

Amtico International SAS  
25 rue de Sèvres  
F-92100 Boulogne  
+33 (0) 1 55 38 95 70  
[info@amtico.fr](mailto:info@amtico.fr)

Amtico International AB  
Strömögatan 7  
164 40 KISTA  
+46 (0) 8 584 233 24  
[info@amtico.se](mailto:info@amtico.se)

Amtico International GmbH  
Im Taubental 11  
D-41468 Neuss  
+49 (0) 2131 359 16 0  
[info@amtico.de](mailto:info@amtico.de)