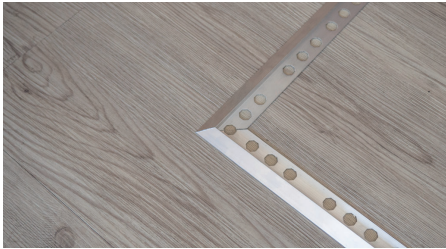
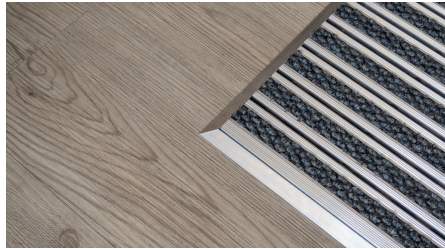


REXMAT ramp profile for creating a matwell over the floor



Self-adhesive, to be easily fixed to the floor (can also be fixed with screws)



Suitable exclusively for 10mm high mats

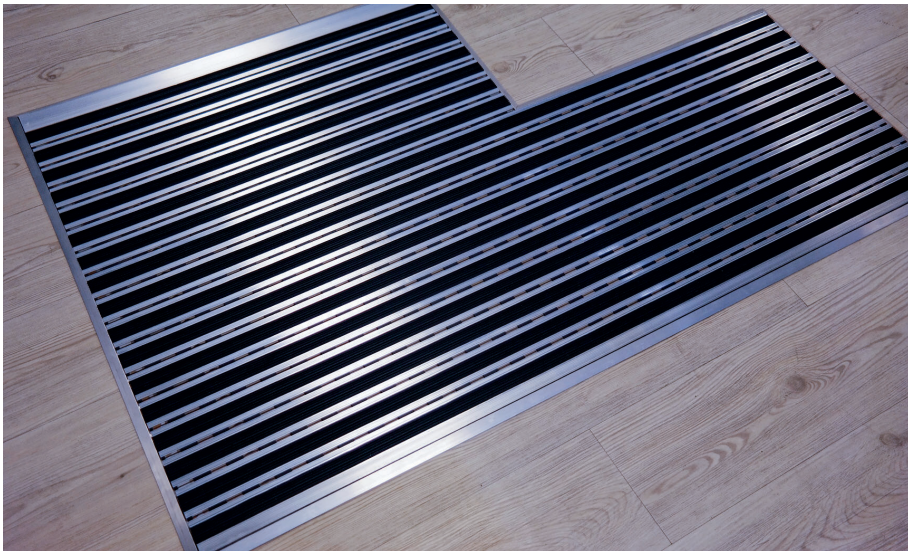
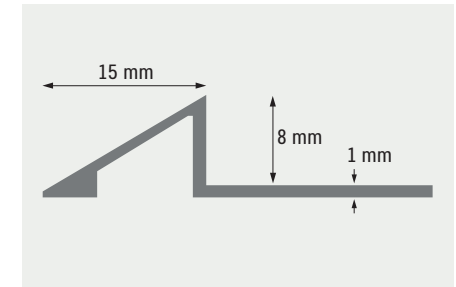
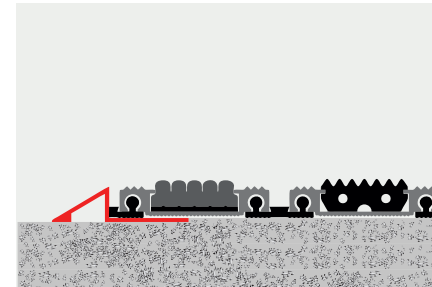


Image of mat and ramp profile

REXMAT ramp profile for creating a matwell over the floor

- Aluminium ramp profile for creating a matwell over the floor, valid exclusively for 10 mm high mats, useful for those cases where there is no matwell in which to accommodate the mat
- Available in 2.5 metre strips. It is supplied in its original format, or in sections already mitred and ready to be fixed to the ground
- Self-adhesive, to be easily fixed to the floor (can also be fixed with screws)
- Suitable exclusively for 10mm high mats
- It doesn't come assembled to the mat



Technical characteristics

Composition: 6063 aluminium alloy with T.5 treatment

Weight: 140 grammes / linear meter