

PERLON RIPS BLOX

Colour. Design. Unlimited.

gewebt · wovon



ANKER
TEPPICHBODEN



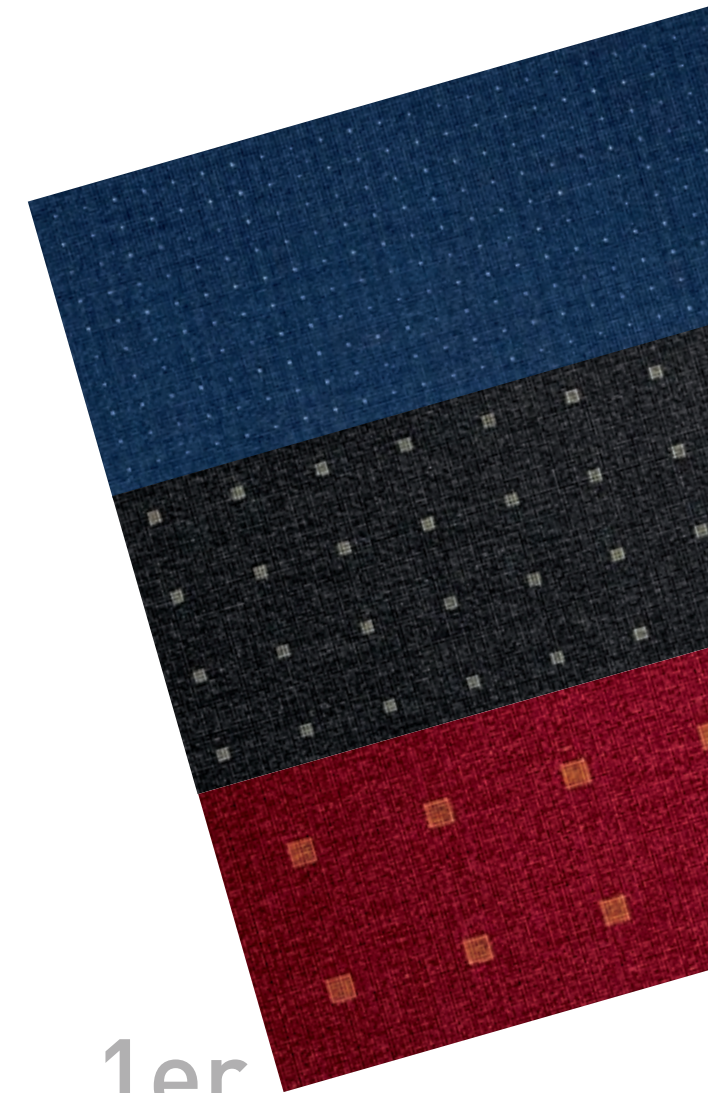


GET DESIGNING.

PERLON RIPS BLOX - drei zeitlose Block-Designs in einer nahezu unbegrenzten Farbvielfalt. Gestalten Sie los, kombinieren Sie die zweifarbigen 1er, 3er oder 6er Block-Designs, aus 36 Grundfarben. Kreieren Sie Ihren Raum aus 3780 Möglichkeiten.

PERLON RIPS BLOX – three timeless block designs in a virtually inexhaustible selection of colours. So get designing: combine the dual-colour block designs in three sizes by choosing from amongst 36 basic colours. And shape your room with one of 3,780 options.

1er
3er
6er





STRAWBERRY FIELD
018



BLOOD ORANGE
012



LAZY ORANGE
021



HELLO PUMPKIN
027



401

GRASS GREEN

Teppichboden, wie frisch gemäht.
Satt, sympathisch, freundlich.
A carpet that looks freshly mown.
Rich, lovely, friendly.



SWEET MANDARIN
101



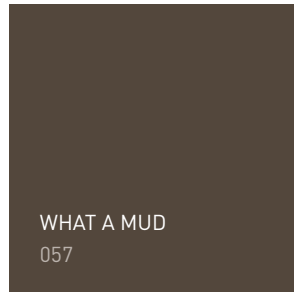
BRIGHT CLAY
058



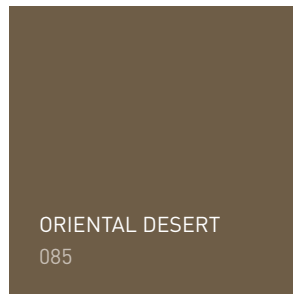
SILENT SAND
803



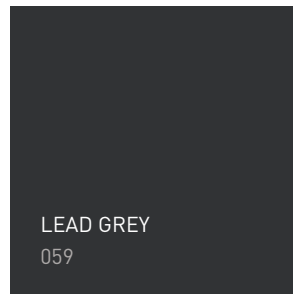
SUNNY SUNFLOWER
201



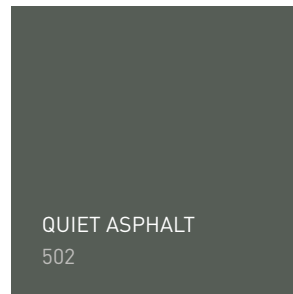
WHAT A MUD
057



ORIENTAL DESERT
085



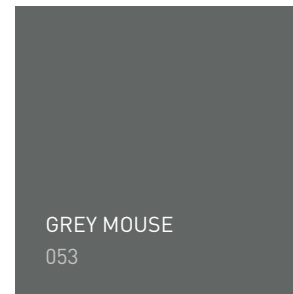
LEAD GREY
059



QUIET ASPHALT
502



CLOUDY GREY
054



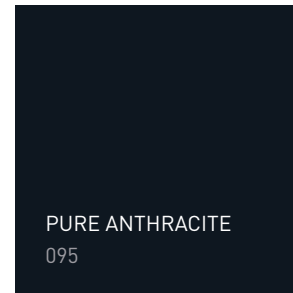
GREY MOUSE
053



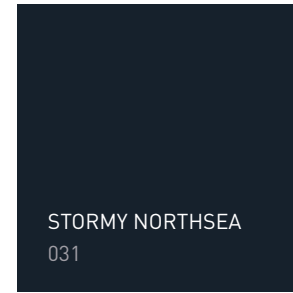
CLEAN DUST
501



WARM GREY
055



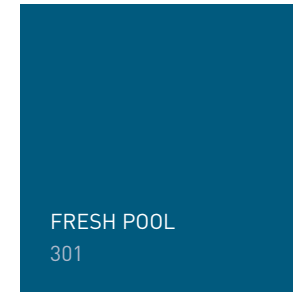
PURE ANTHRACITE
095



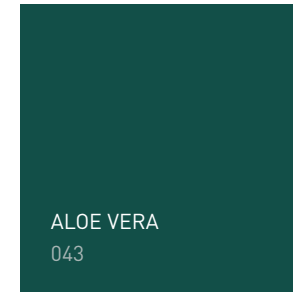
STORMY NORTHSEA
031



DEEP WATER
033



FRESH POOL
301



ALOE VERA
043



COBALT CRYSTAL
034



OH! OLIVE
024



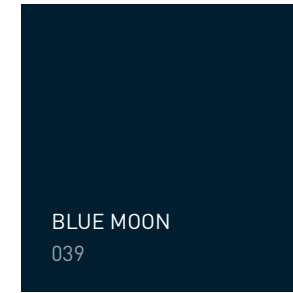
ARTIC BLUE
037



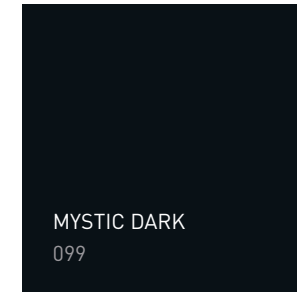
BLUE BERRY BLUE
030



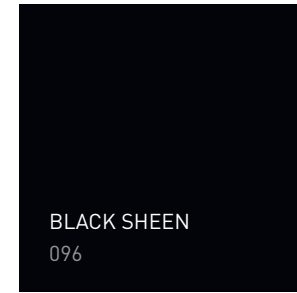
JUST BEFORE MIDNIGHT
302



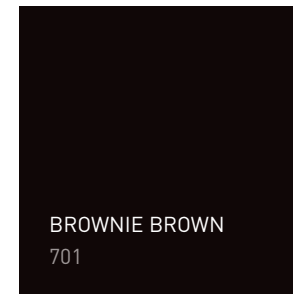
BLUE MOON
039



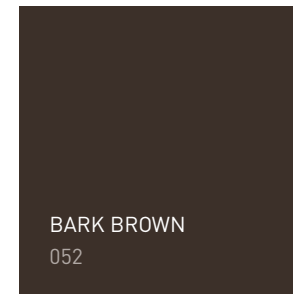
MYSTIC DARK
099



BLACK SHEEN
096



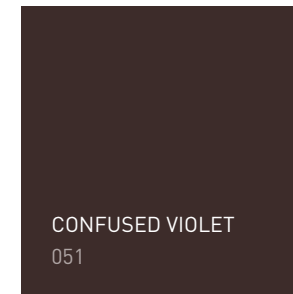
BROWNIE BROWN
701



BARK BROWN
052



WILD PLUM
075



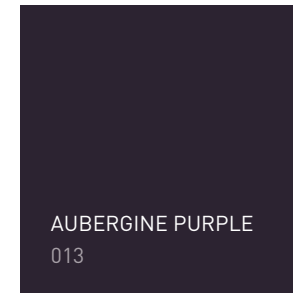
CONFUSED VIOLET
051



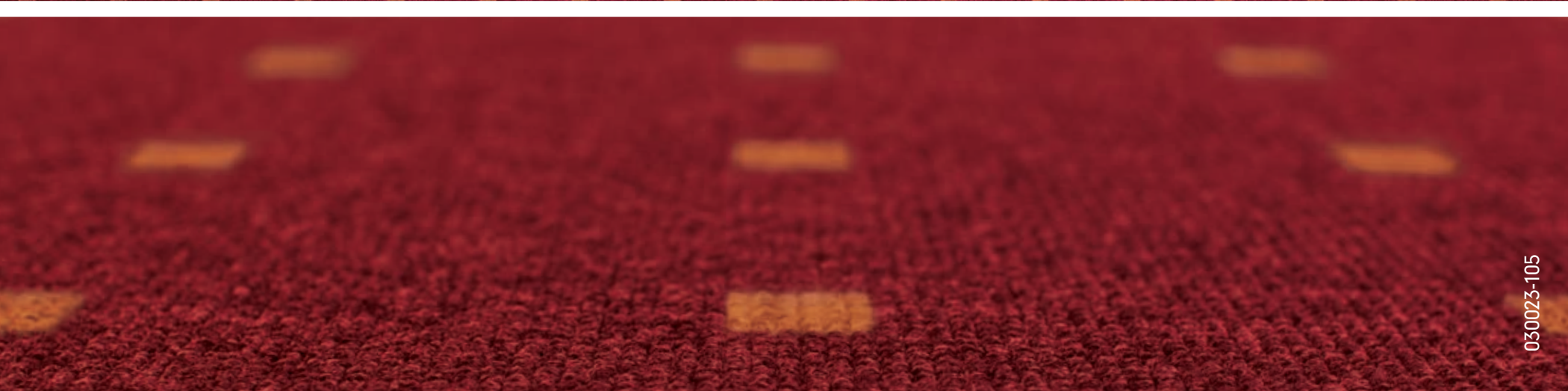
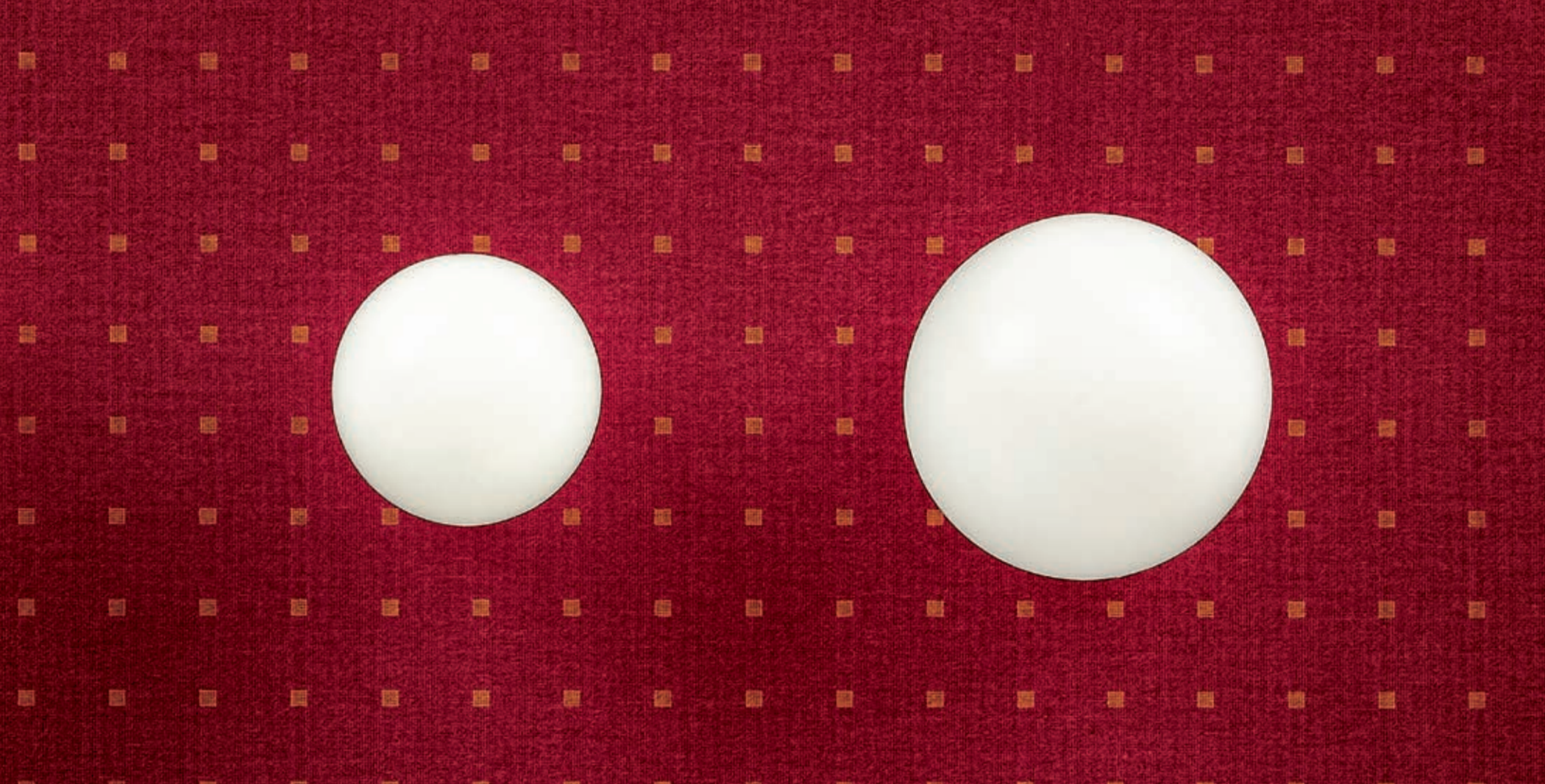
035

LOOK AT THE SKY

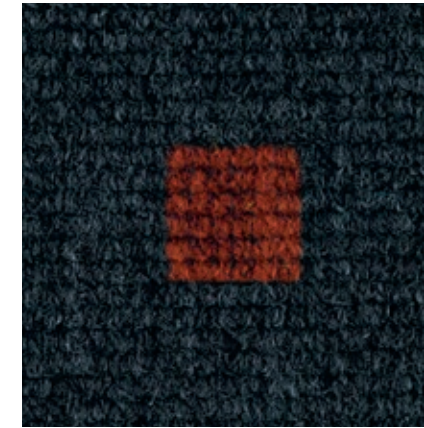
Ein Frühlingstag. Kein Wölkchen am Himmel.
Eine einzigartige Stimmung.
Jetzt zu textilem Bodendesign verwebt.
A spring day. Not a cloud in the sky.
A unique atmosphere. Now woven into a
textile floor design.



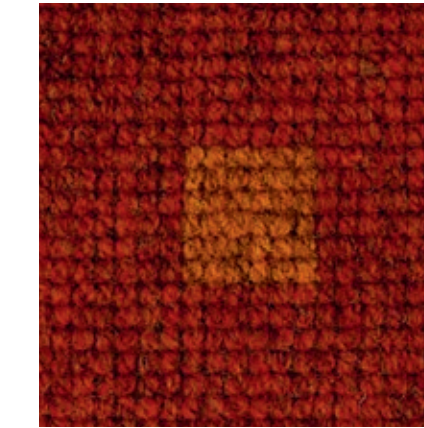
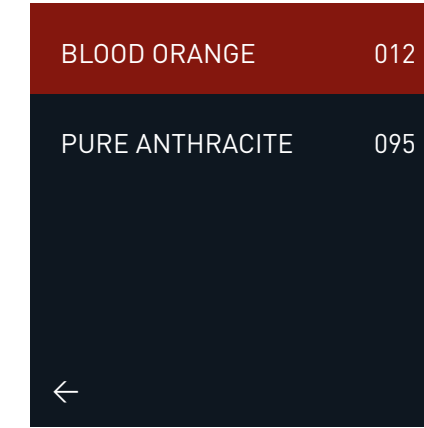
AUBERGINE PURPLE
013



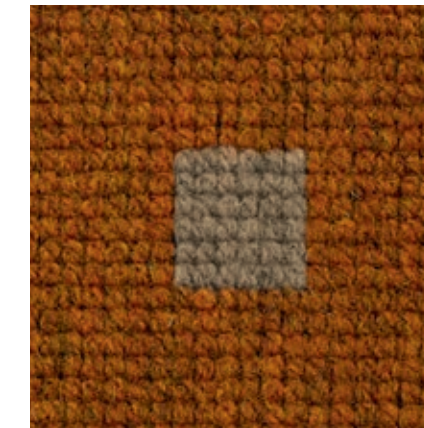
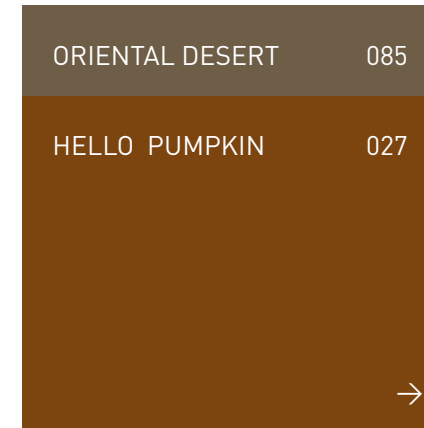
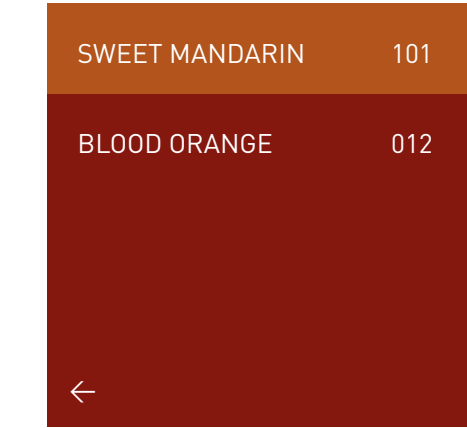
030023-105



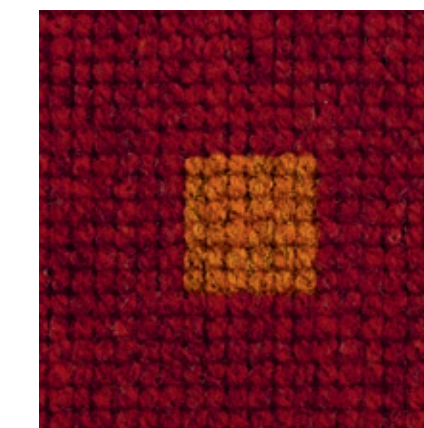
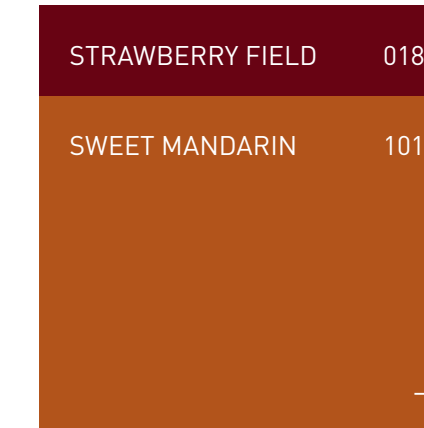
030023-902



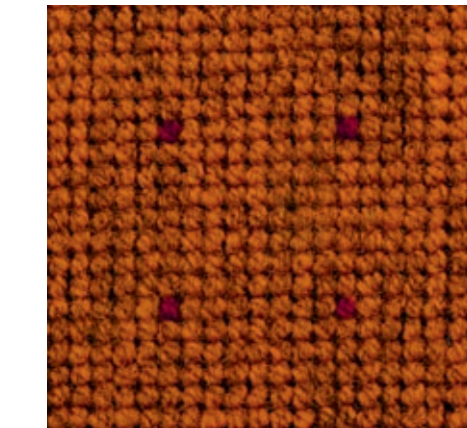
030023-103



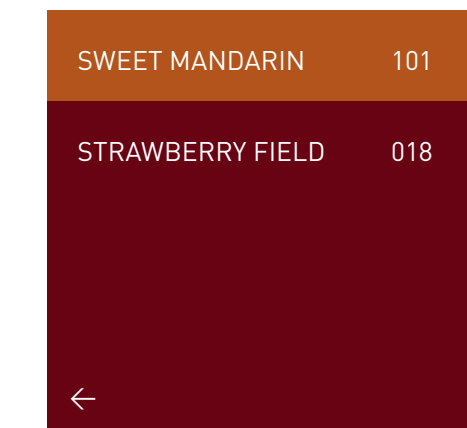
030023-203



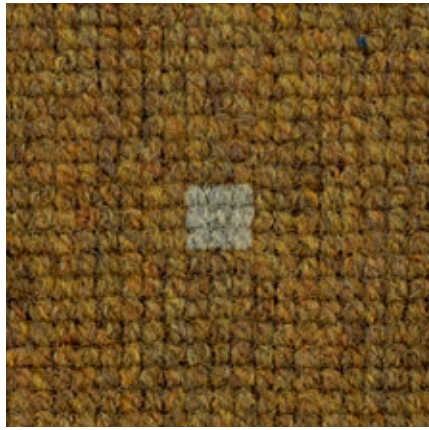
030023-105*



030132-104



*Lagerware / available from stock



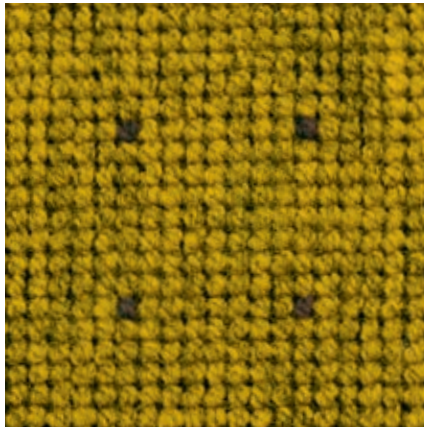
SILENT SAND	803
OH! OLIVE	024

←

030022-201

BARK BROWN	052
SUNNY SUNFLOWER	201

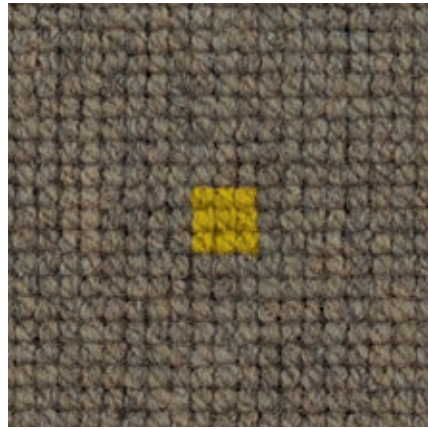
→



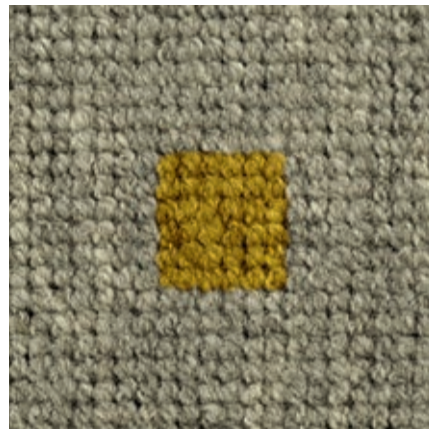
030132-202*

SUNNY SUNFLOWER	201
BRIGHT CLAY	058

→



030022-801*



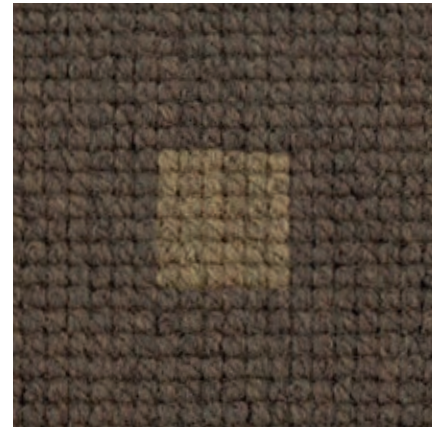
030023-803

SUNNY SUNFLOWER	201
SILENT SAND	803

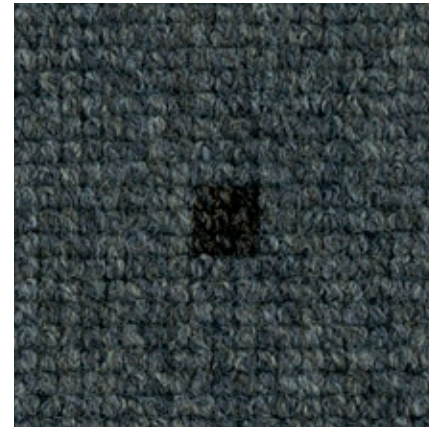
←

ORIENTAL DESERT	085
WHAT A MUD	057

→



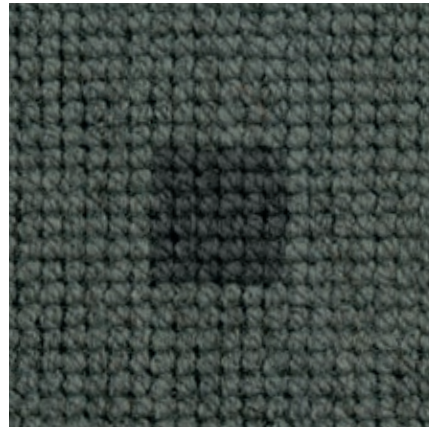
030023-805*



030022-055*

MYSTIC DARK	099
WARM GREY	055

←



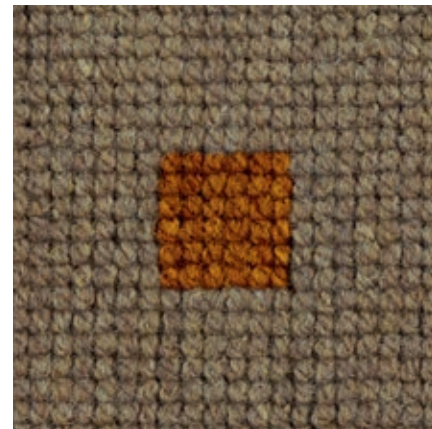
030023-502

LEAD GREY	059
QUIET ASPHALT	502

←

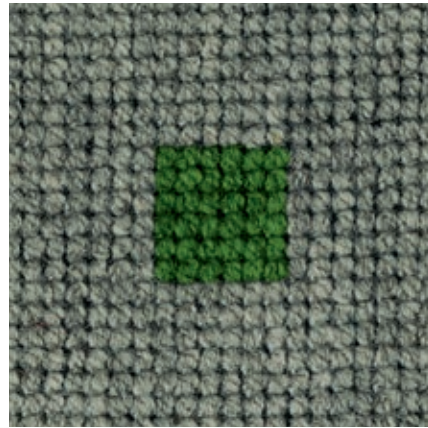
HELLO PUMPKIN	027
ORIENTAL DESERT	085

→



030023-802

GRASS GREEN	401
CLEAN DUST	501
→	

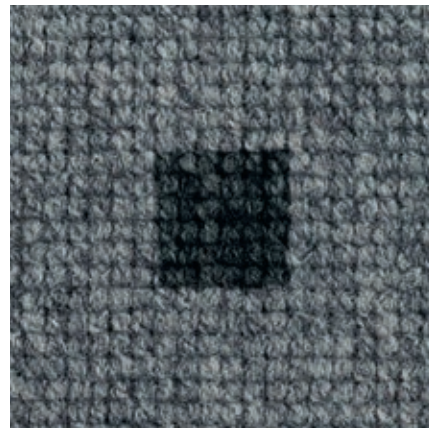


030023-504

LEAD GREY	059
ORIENTAL DESERT	085
→	

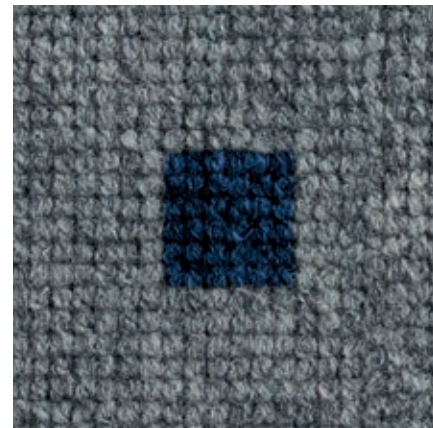


030022-804



030023-501

PURE ANTHRACITE	095
GREY MOUSE	053
←	



030023-503

BLUE BERRY BLUE	030
GREY MOUSE	053
←	



CLEAN DUST	501
PURE ANTHRACITE	095
→	



030022-095*

*Lagerware / available from stock

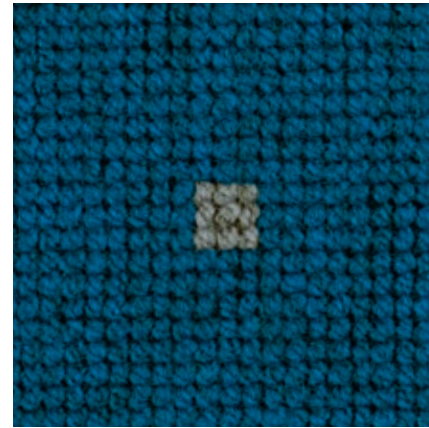


030022-095



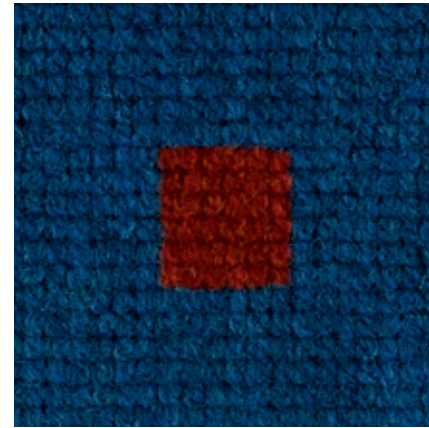
AUBERGINE PURPLE	013
ALOE VERA	043

←



GREY MOUSE	053
FRESH POOL	301

←



STRAWBERRY FIELD	018
COBALT CRYSTAL	034

←

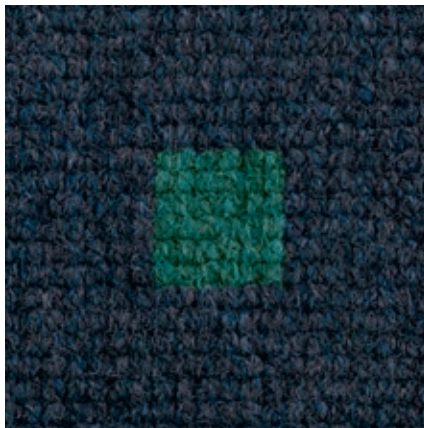
030023-402

030022-301

030023-304

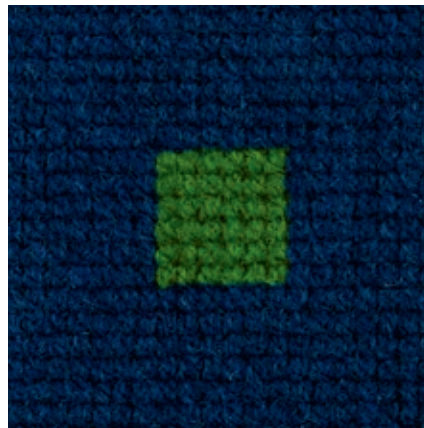
ALOE VERA	043
STORMY NORTHSEA	031

→



GRASS GREEN	401
BLUE BERRY BLUE	030

→



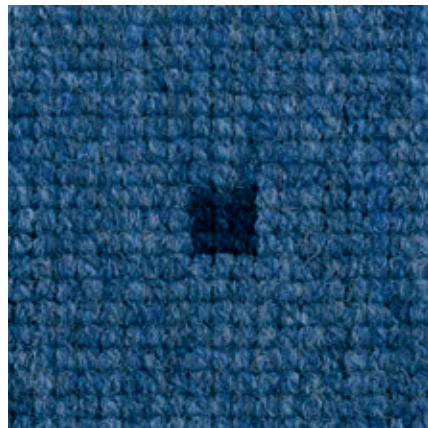
LOOK AT THE SKY	035
BLUE BERRY BLUE	030

→



JUST BEFORE MIDNIGHT	302
LOOK AT THE SKY	035

→

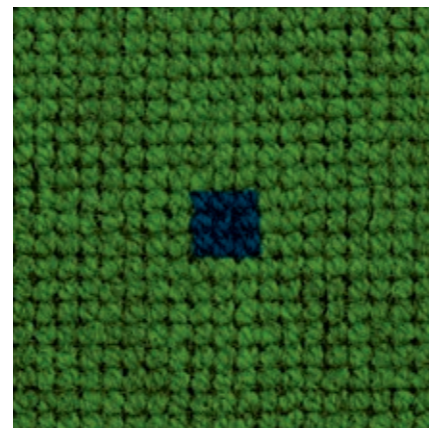


030023-302

030023-303

030132-033*

030022-305*



DEEP WATER	033
GRASS GREEN	401

←



FRESH POOL	301
JUST BEFORE MIDNIGHT	302

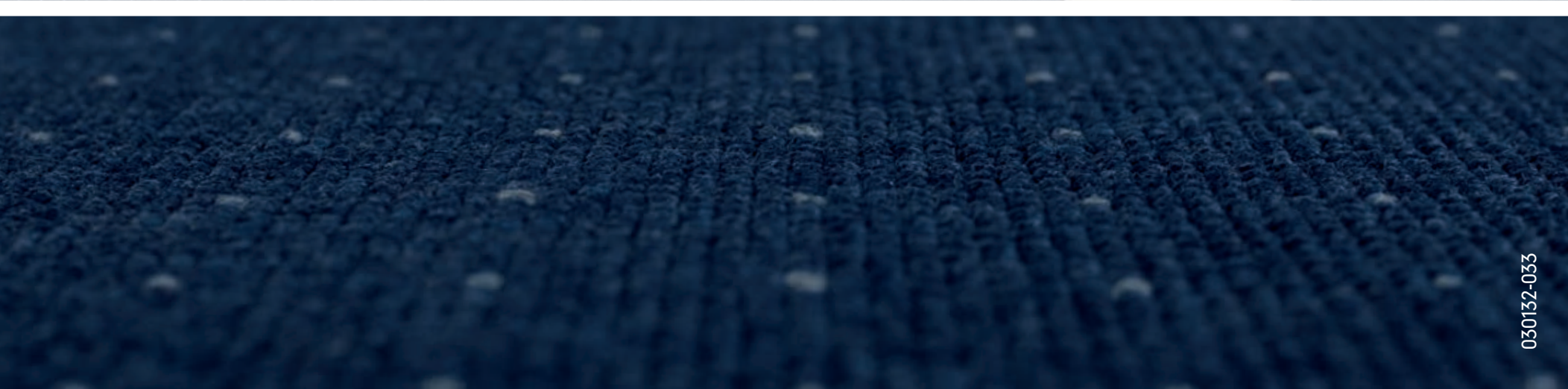
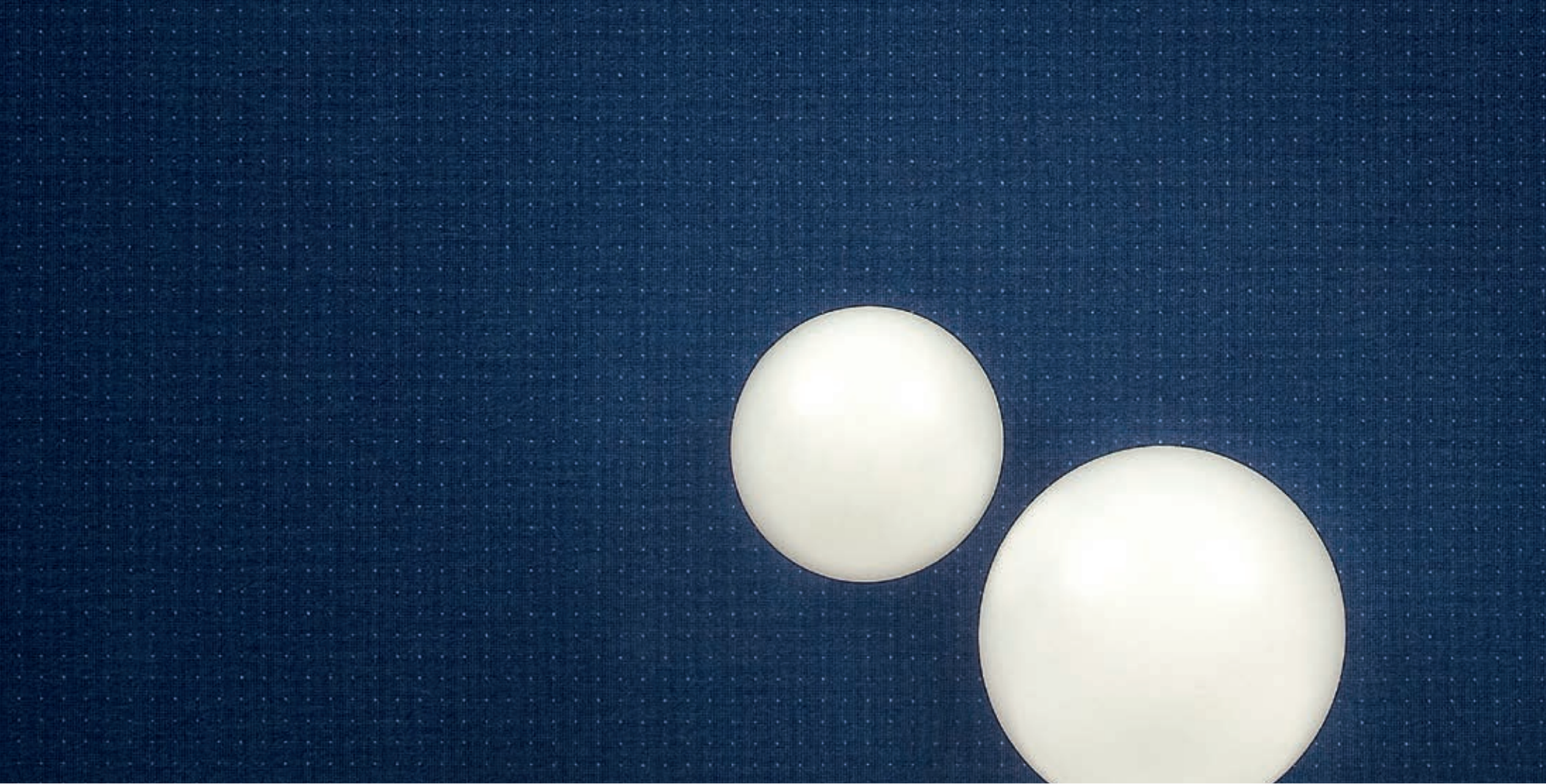
←

FRESH POOL	301
JUST BEFORE MIDNIGHT	302

←

030022-401*

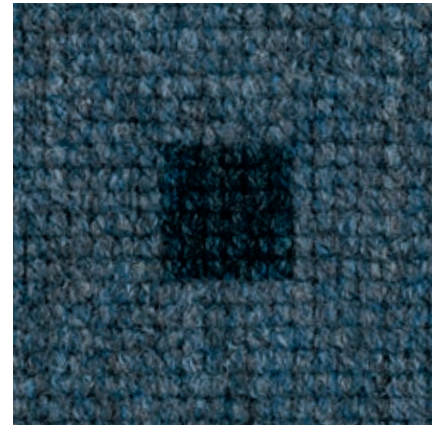
030023-306



030132-033

BLUE MOON	039
ARTIC BLUE	037

→



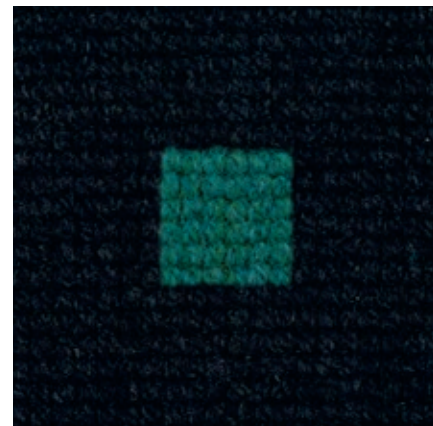
030023-307

ORIENTAL DESERT	085
BLUE MOON	039

←

ORIENTAL DESERT	085
BLUE MOON	039

←



030023-901

ALOE VERA	043
BLACK SHEEN	096

←

WARM GREY	055
MYSTIC DARK	099

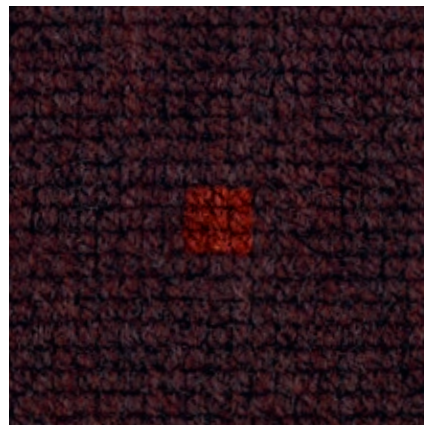
→



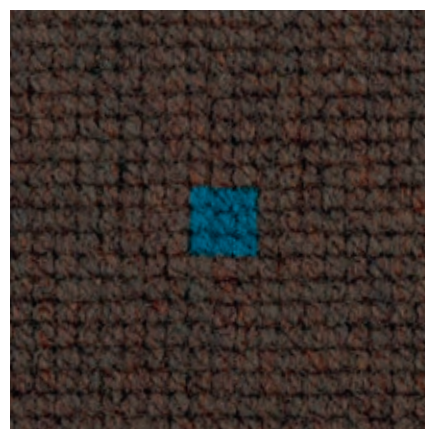
030132-099*

BLOOD ORANGE	012
WILD PLUM	075

→



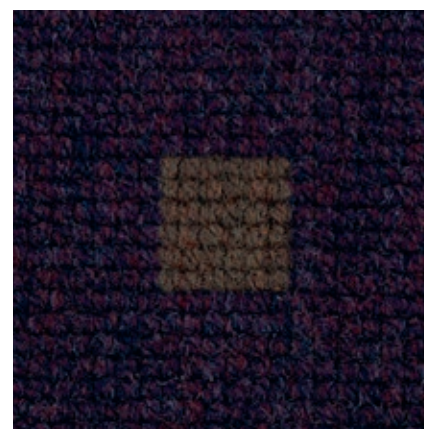
030022-701*



030022-704

FRESH POOL	301
BARK BROWN	052

←



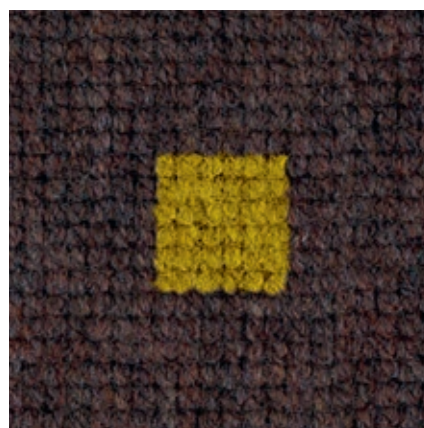
030023-106

BARK BROWN	052
AUBERGINE PURPLE	013

←

SUNNY SUNFLOWER	201
CONFUSED VIOLET	051

→



030023-702

GREY MOUSE	053
WILD PLUM	075

→



030132-703

*Lagerware / available from stock

FASZINIERENDE FARBKOMPOSITIONEN. ERST MISCHEN, DANN SPINNEN.

FASCINATING COLOUR COMPOSITIONS – BLEND FIRST, THEN SPIN.

Jede PERLON RIPS-Farbe wird aufwendig durch Interior- und Textildesigner komponiert, indem verschiedenfarbiges Flockmaterial wie von einem Maler in genau definierten Anteilen gemischt und anschließend zu Garn versponnen wird. So besteht zum Beispiel der Farbton OH! OLIVE aus fünf Farben: Orange, Gelb, Mahagoni, Gold und Schwarz. Die Farbwirkung entwickelt sich erst in der verwebten Gesamtanmutung, denn bei der textilen Farbmischung geht kein Mischfarbton unter, sondern bleibt immer sichtbar erhalten. Ein typisches Merkmal der unnachahmlichen PERLON RIPS-Melange.

Each PERLON RIPS colour is composed by interior and textile designers by blending loose fibres of various colours – like a painter – in specific proportions and then spinning it into yarn. OH! OLIVE, for example, is made up of five colours: orange, yellow, mahogany, gold and black. The colour effect

only develops when everything is woven together, as no individual mixing colours are lost in textile colour mixing; they always remain visible. A characteristic feature of the inimitable PERLON RIPS – mottling.





HOCHWERTIGSTE BODENGESTALTUNG.
IN UNAUFGEREGTER ART.

PERLON RIPS, der zeitlose Designklassiker, wird sehr dicht gewebt und hat deshalb eine unerreichbar gerade und hat deshalb eine wöhnlich gerade und sehr exakt stehenden Noppen. Das Resultat ist eine störungsfreie Homogenität des Bodens. In seiner Gestalt zurückgenommen und gerade dadurch weltweit von Architekten und Designern geschätzt.

THE HIGHEST-QUALITY FLOOR DESIGN -
IN A HARMONIOUS FASHION

PERLON RIPS, the timeless design classic, is woven very tightly and therefore has an unparalleled compact structure with an unusually straight and very precise upright nap. The result is uninterrupted floor homogeneity. Restrained in form, and prized by architects and designers the world over for precisely this reason.

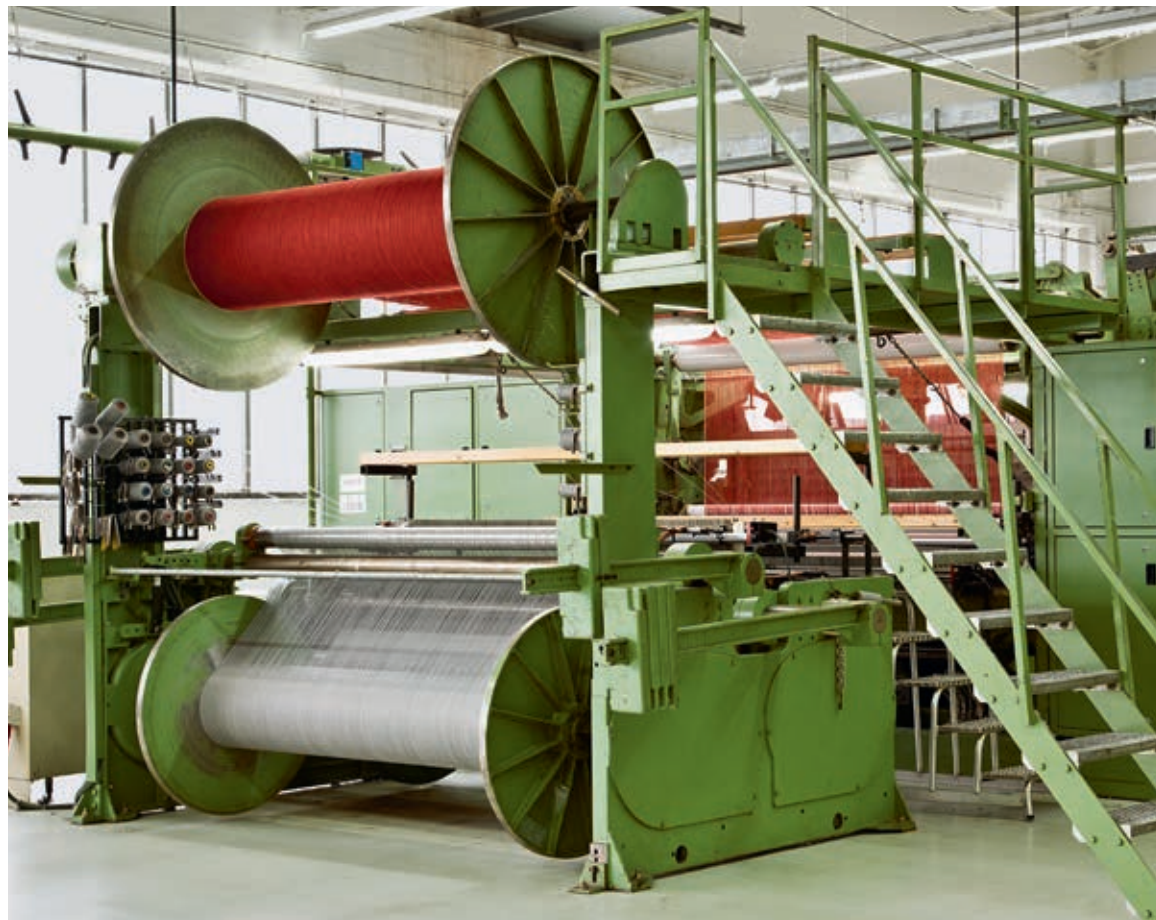
PERLON RIPS wurde 1959 von Franz Steffens, dem ehemaligen Leiter der Produktentwicklung, entwickelt und wird bis heute exklusiv und vollständig bei ANKER Teppichboden in Düren gefertigt. Gerade hierin liegt das Markengeheimnis des Klassikers: die konsequente Beherrschung jeder Produktions- und Prozessstufe.

Von der Flockfärbung über die Herstellung des einzigartigen ANKER-Streichgarns bis hin zur Verwebung durch exzellente handwerkliche Könner. Natürlich geschieht dies heute mit modernsten, eigens für ANKER entwickelten Webmaschinen. Bedient werden sie aber von Mitarbeitern, die die über 150-jährige Webkompetenz von ANKER Teppichboden verinnerlicht haben.

Diese Philosophie ist die Voraussetzung für die überragende Produktqualität und die damit verbundene Langlebigkeit. Heute werden gelegentlich Objekte von ANKER nachgerüstet, in denen 30 Jahre PERLON RIPS lag. Nicht weil der Teppichboden unansehnlich oder gar zerschissen wäre - nein, schlicht weil das Gestaltungskonzept erneuert wurde.

Es lohnt, in diesem Zusammenhang über das Thema Nachhaltigkeit nachzudenken. Was gibt es Sinnvolleres als Produkte, die jahrzehntelang nicht nur schön anzuschauen sind, sondern „nachhaltig“ funktionieren und verlässlich ihren Dienst tun? In einer schnelllebigen Zeit eine faszinierende, auf der Hand liegende Grundidee. Entwickelt im Jahr 1959.

ÜBERRAGENDE QUALITÄT. ZU ENDE GEDACHT.



EXCELLENT QUALITY – WELL THOUGHT THROUGH.

PERLON RIPS was developed in 1959 by Franz Steffens, the former head of product development, and is exclusively and completely manufactured by ANKER Teppichboden in Düren to this day. Precisely herein lies the secret of this classic brand: the consistent control of every stage in production and processing.

From the colour chips and the manufacture of the unique ANKER carded wool, to the weaving done by highly skilled expert craftspeople. Of course, today this is done by cutting-edge looms specially designed for ANKER. They are, however, operated by staff who have internalised the weaving skills cultivated by ANKER Teppichboden for over 100 years.

This philosophy is the basis for the superior product quality and the durability associated with it. Today, ANKER occasionally refits premises where PERLON RIPS had been laid 30 years ago. Not because the carpet had become unsightly or even worn – no, simply because the design concept had been updated.

It is worth considering the issue of sustainability in this context. What could be more sensible than products that not only look good for decades, but also function ‘sustainably’ and do their job reliably? A fascinating, self-evident basic idea for a fast-paced world – developed in 1959.





PRODUKTBESCHREIBUNG PRODUCT DESCRIPTION

auf Basis EN 1307 / according to EN 1307

PERLON RIPS BLOX	
Bahnenware rolls	
Herstellungsart / Manufacturing process	gewebt / woven
Abmessung / Measures	Bahnen, ca. 200 cm breit / rolls, approx. 200 width
Oberseitengestaltung / Surface	Schlinge / loop pile
Farbgestaltung / Coloration	gemustert / patterned designed
Material der Polnutzschicht / Pile material	100 % Polyamid/versponnen / 100 % polyamide/spun
Grundgewebe / Ground fabric	PES / PP
Rückenausrüstung / Backing	Appretur / finish
Gesamtgewicht / Total weight	ca. 1.640 g/m ² / approx. 1.640 g/m ²
Gesamtdicke / Total height	ca. 4,4 mm / approx. 4,4 mm
Polschichtgewicht / Pile weight above backing	ca. 420 g/m ² / approx. 420 g/m ²
Poleinsatzgewicht / Pile weight	ca. 800 g/m ² / approx. 800 g/m ²
Polschichtdicke / Pile height	ca. 2,2 mm / approx. 2,2 mm
Pol-Rohdichte / Pile density	ca. 0,191 g/cm ³ / approx. 0,191 g/cm ³
Noppenzahl / Number of tufts	ca. 113.000 /m ² / approx. 113.000 /m ²
Verwendungsbereich / Wear classification	gewerblich - stark (33) / commercial - heavy (33)
Oberflächenwiderstand / Horizontal resistance	ca. ≤ 10 ⁹ Ohm
Trittschallverbesserungsmaß L _w / Sound Insulation L _w	ca. 21 dB / approx. 21 dB
Bewerteter Schallabsorptionsgrad α _w Weighted sound absorption coefficient α _w	0,15
Brennverhalten / Burning classification DIN EN 13501-1	C _f -s1 - verklebt mit / glued with Thomsit T410, Uzin UZ 57, Forbo 509 Eurostar
Wärmedurchlasswiderstand / Resistance to heat reduction	≤ 0,17 m ² K/W
Lichtechtheit / Light fastness	≥ 5





ANKER
TEPPICHBODEN

ANKER Teppichboden
Gebr. Schoeller GmbH + Co. KG
Postfach 10 19 26 · D - 52319 Düren
Telefon +49 (0) 2421 804-0
Telefax +49 (0) 2421 804-200

Export
Phone +49 (0) 2421 804-216
Fax +49 (0) 2421 804-309

anker@anker-dueren.de
www.anker.eu