

Product catalogue
burmatex[®]

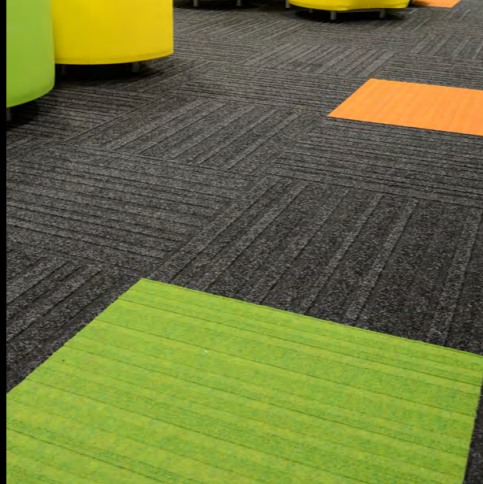




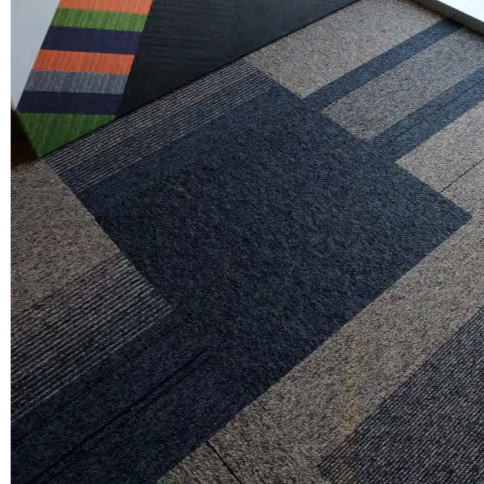
We are passionate about making our flooring products and aim to create truly inspirational environments for people to enjoy



burmatex offers an expansive product range; our traditional fibre bonded sheet and tile ranges include entrance products and ground-breaking structure bonded ranges, which present an expansive colour palette. Our low level loop, textured loop and cut pile tufted carpet tile ranges, including a specialist entrance barrier product, are inspired by the latest and predicted future design and colour trends.



burmatex is committed to best environmental practice in our manufacturing, from the sourcing of raw materials - including recycled content - minimising and reprocessing waste, use of green electricity and recycled packaging. Because of this, the Building Research Establishment (BRE) has awarded our products the highest BREEAM ratings; mostly A+.



We hope that by reading our catalogue and visiting our website at www.burmatex.co.uk, we will inspire you to work with us to create really unique, captivating floor designs.

burmatex is a leading UK manufacturer of contract carpets and carpet tiles. We are passionate about creating truly inspirational environments, reflected in our products unique nature across both design and manufacture.

Our products are suitable for use in heavy contract markets and used in a wide variety of private and public sector buildings, including schools, offices, universities and leisure centres.

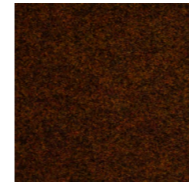


The burmatex design team are a driving force in developing product ranges which reflect colour and design trends as well as creating exclusive, bespoke carpet tiles to meet customers' needs and providing our free planned flooring layout design service.

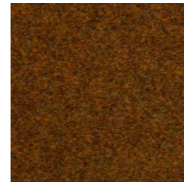


burmatex is a BS EN ISO 9001:2000 registered company (Cert No.FM1440). All products are tested to BSI/CEN standards in relation to durability, wear, flame retardancy, antistatic properties and colour fastness.

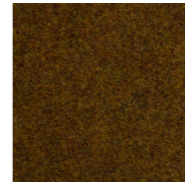




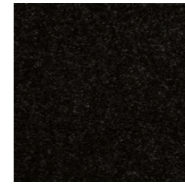
2126 grampian gold



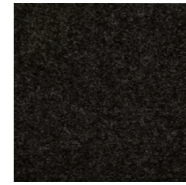
2128 angus tan



2129 falkirk fawn



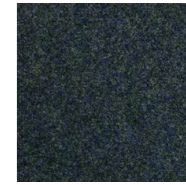
2110 berkshire black



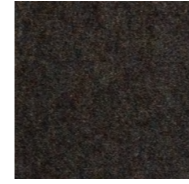
2109 glamorgan grey



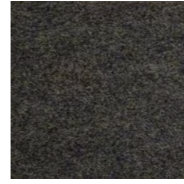
2111 wiltshire charcoal



2102 Devon Blue



2104 hampshire slate



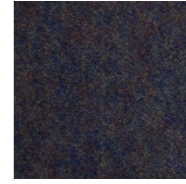
2107 surrey blue



2101 cornwall blue



2105 sussex sea



2106 kent mauve



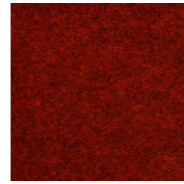
2119 lancashire green



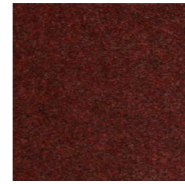
2118 Yorkshire Fern



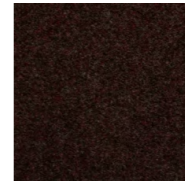
2117 cheshire jade



2115 norfolk sun



2114 shropshire maroon



2112 suffolk heather

Specification

Product Description: Fibre Bonded

Pile Yarn Description: 85% Polypropylene 15% Nylon

Roll Length: 30m

Roll Width: 2m

Total Thickness: 4.8 mm +/-10%

Total Weight: 915 g/m² +/-10%

Castor Chair Rating: BS EN 985 Pass

Body Voltage Test: BS ISO 6356:2000 <2kV

Colour Fastness To Light: Minimum grade 6

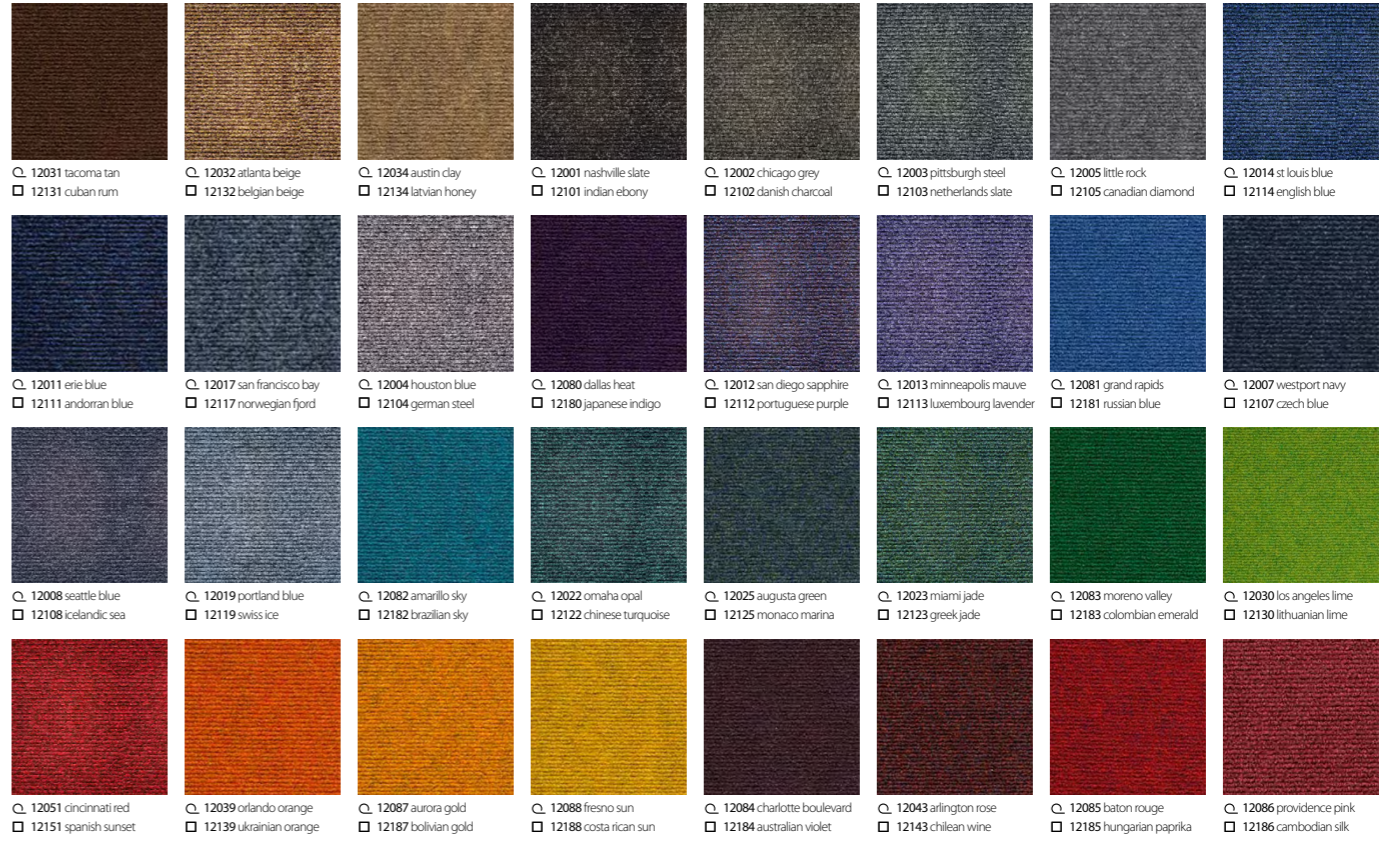
Flammability: Euroclass Cf1-s1

3230 classic

3230 classic is extremely durable fibre bonded carpet, perfectly suited for public buildings, such as schools and gyms and other commercial interiors. Made from a high performance mix of solution dyed fibres, it is available in a choice of 18 practical colourways.



Huddle area



roll 4200 sidewalk
tile cordiale

Specification C

Product Description: Fibre Bonded
Pile Yarn Description: 85% Polypropylene 15% Nylon
Roll Length: 30m
Roll Width: 2m
Total Thickness: 6.0 mm +/-10%
Total Weight: 950 g/m² +/-10%
Castor Chair Rating: BS EN 985 Pass
Body Voltage Test: BS ISO 6356:2000 <2kV
Colour Fastness To Light: Minimum grade 6
Flammability: Euroclass EF-s1*
 *200m² minimum order quantity for Cf1-s1 rating

Specification □

Product Description: Fibre Bonded
Pile Yarn Description: 85% Polypropylene 15% Nylon
Tile Dimensions: 50 cm x 50 cm
Total Thickness: 7.8 mm +/-10%
Pile Weight: 950 g/m²
Castor Chair Rating: BS EN 985 Pass
Body Voltage Test: BS ISO 6356:2000 <2kV
Colour Fastness To Light: Minimum grade 6
Flammability: Euroclass BF-s1

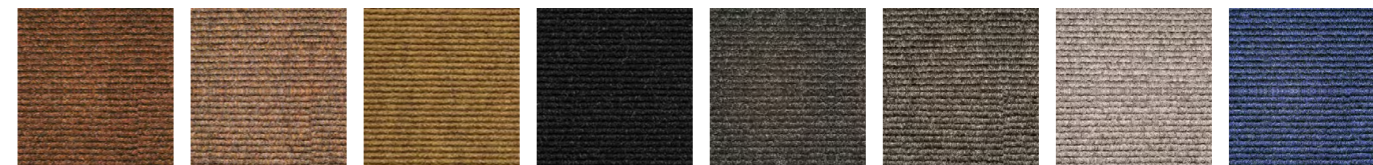


4200 sidewalk

4200 sidewalk is an extremely durable fine ribbed fibre bonded carpet sheet. It is ideally suited for schools, public buildings and commercial offices. Made from a high performance mix of solution dyed fibres, it is available in a range of 32 vibrant colours.

cordiale

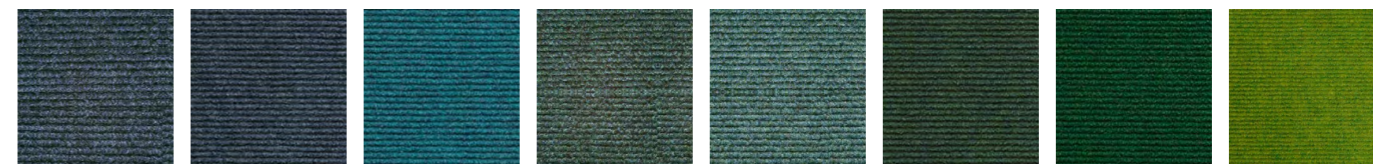
cordiale is an extremely durable fine ribbed fibre bonded carpet tile. It is ideally suited for schools, public buildings and commercial offices. Made from a high performance mix of solution dyed fibres, it is available in a range of 32 vibrant colours.



11531 buffalo brown
 11831 rishworth brown
 11532 harlem beige
 11832 buckingham beige
 11534 rockland stone
 11834 hereford stone
 11501 edison slate
 11801 sedburgh slate
 11502 oregon grey
 11802 gresham grey
 11503 lexington grey
 11803 gordonstoun grey
 11505 waldorf grey
 11805 sherborne grey
 11514 virginia blue
 11814 oriel blue



11511 newark blue
 11811 repton blue
 11517 bowery blue
 11817 winchester blue
 11504 staten steel
 11804 durham steel
 11580 dutchess purple
 11880 exeter indigo
 11512 bergen sapphire
 11812 stamford sapphire
 11513 new york mauve
 11813 malvern mauve
 11581 richmond blue
 11881 strathallan blue
 11507 montana blue
 11807 kings navy



11508 hudson blue
 11808 marlborough blue
 11519 new haven blue
 11819 bradfield blue
 11582 long island sky
 11882 dover teal
 11522 washington jade
 11822 harrow green
 11525 madison marine
 11825 rossall jade
 11523 newburgh jade
 11823 monmouth moss
 11583 litchfield green
 11883 ackworth green
 11530 colorado lime
 11830 loretto lime



11551 saratoga red
 11851 rugby red
 11539 florida flame
 11839 oundle orange
 11587 westchester gold
 11887 epsom gold
 11588 syracuse sun
 11888 kingsmead gold
 11584 queens purple
 11884 wellington purple
 11543 texas rose
 11843 keble rose
 11585 cortland rouge
 11885 rougemont red
 11586 trenton pink
 11886 dulwich pink

roll 4200 sidewalk
 tile cordiale

Specification

Product Description: Fibre Bonded
Pile Yarn Description: 85% Polypropylene 15% Nylon
Roll Length: 30m
Roll Width: 2m
Total Thickness: 6.5 mm +/-10%
Total Weight: 975 g/m² +/-10%
Castor Chair Rating: BS EN 985 Pass
Body Voltage Test: BS ISO 6356:2000 <2kV
Colour Fastness To Light: Minimum grade 6
Flammability: Euroclass EF-s1*

*200m2 minimum order quantity for Cf1-s1 rating

Specification

Product Description: Fibre Bonded
Pile Yarn Description: 85% Polypropylene 15% Nylon
Tile Dimensions: 50 cm x 50 cm
Total Thickness: 7.8 mm +/-10%
Pile Weight: 975 g/m²
Castor Chair Rating: BS EN 985 Pass
Body Voltage Test: BS ISO 6356:2000 <2kV
Colour Fastness To Light: Minimum grade 6
Flammability: Euroclass Bfl-s1

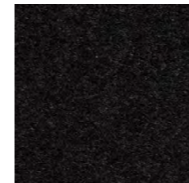


4400 broadway

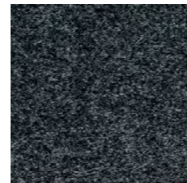
4400 broadway is an extremely durable broad ribbed fibre bonded carpet sheet and is particularly suited for public buildings, such as schools, and other commercial interiors. Made from a high performance mix of solution dyed fibres, it is available in a wide range of 32 exciting colourways.

academy

academy is an extremely durable broad ribbed fibre bonded carpet tile and is particularly suited for public buildings, such as schools, and other commercial interiors. Made from a high performance mix of solution dyed fibres, it is available in a wide range of 32 exciting colourways.



2670 black slate



2640 charcoal grey



2650 steel grey



2620 electric blue



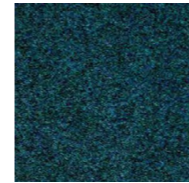
2628 ocean blue



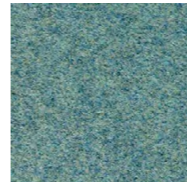
2656 summer sky



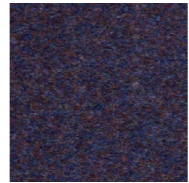
2642 teal green



2631 sea blue



2634 aqua



2666 deep indigo



2690 purple haze



2630 flame red

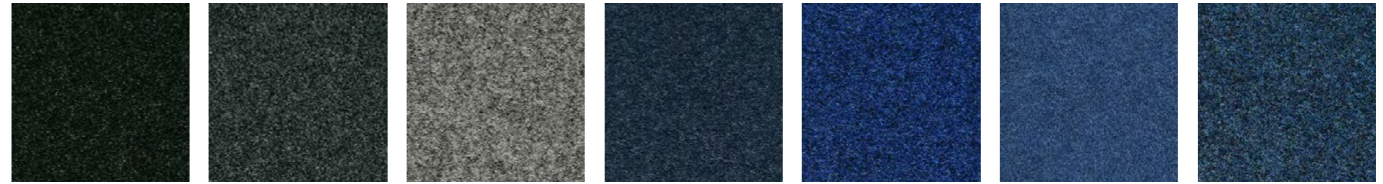
Specification

- Product Description:** Fibre Bonded
- Pile Yarn Description:** 100% Polypropylene
- Tile Dimensions:** 50 cm x 50 cm
- Total Thickness:** 7.8 mm +/-10%
- Pile Weight:** 1000 g/m²
- Body Voltage Test:** BS ISO 6356:2000 <2kV
- Colour Fastness To Light:** Minimum grade 6
- Flammability:** Euroclass Bfl-s1



rialto

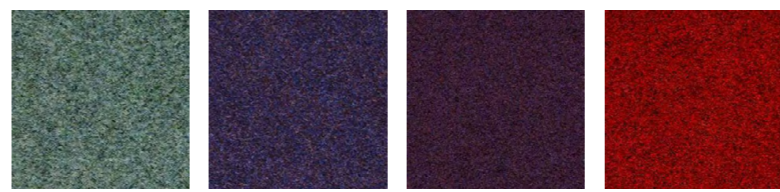
rialto is an extremely durable heavy contract velour pile carpet tile. It is constructed from 100% polypropylene yarn and is ideally suited for public buildings, such as schools, and other commercial interiors. It is available in 12 colourways.



6070 yakama slate 6040 armenian grey 6050 norman steel 6023 iceni blue 6060 barona blue 6081 bavarian blue 6028 saxon blue



6056 spartan mauve 6061 skydancer 6036 phoenician green 6083 norse green 6045 trojan green 6055 dorian azure 6082 mayan sky



6022 assyrian jade 6066 navajo mauve 6090 persian purple 6062 red lake

Specification

Product Description: Fibre Bonded
Pile Yarn Description: 85% Polypropylene 15% Nylon
Roll Length: 30m
Roll Width: 2m
Total Thickness: 6.5 mm +/-10%
Total Weight: 1150 g/m² +/-10%
Castor Chair Rating: BS EN 985 Pass
Body Voltage Test: BS ISO 6356:2000 <2kV
Colour Fastness To Light: Minimum grade 6
Flammability: Euroclass EF-s1

Specification

Product Description: Fibre Bonded
Pile Yarn Description: 85% Polypropylene 15% Nylon
Tile Dimensions: 50 cm x 50 cm
Total Thickness: 10 mm +/-10%
Pile Weight: 1200 g/m²
Castor Chair Rating: BS EN 985 Pass
Body Voltage Test: BS ISO 6356:2000 <2kV
Colour Fastness To Light: Minimum grade 6
Flammability: Euroclass BF-s1



5500 luxury

5500 is an extremely durable fibre bonded carpet sheet, ideally suited for public buildings, such as schools, and other commercial interiors. Made from a high performance mix of solution dyed fibres, it is available in a choice of 18 attractive colourways.

velour excel

velour excel is an extremely durable fibre bonded carpet tile, ideally suited for public buildings, such as schools, and other commercial interiors. Made from a high performance mix of solution dyed fibres, it is available in a choice of 18 attractive colourways.



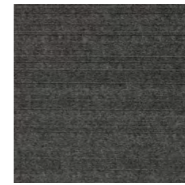
1834 soap stone



1891 pewter cloud



1805 diamond dust



1803 concrete jungle



1802 zinc asphalt



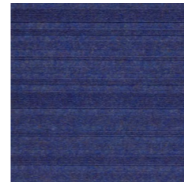
1801 carbon steel



1809 ink stone



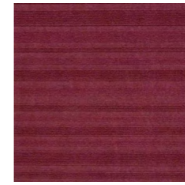
1814 blue monday



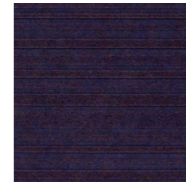
1813 lavender oil



1890 purple emperor



1886 pink diamond



1812 indigo snake



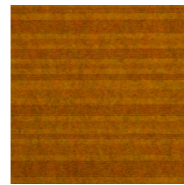
1882 turquoise mountain



1883 emerald coast



1830 lime street



1887 gold quest



1839 mandarin duck



1845 scarlet runner

Specification

Product Description: Structure Bonded®

Pile Yarn Description: 85% Polypropylene 15% Nylon

Tile Dimensions: 50 cm x 50 cm

Total Thickness: 7.8 mm +/-10%

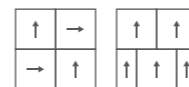
Pile Weight: 950 g/m²

Castor Chair Rating: BS EN 985 Pass

Body Voltage Test: BS ISO 6356:2000 <2kV

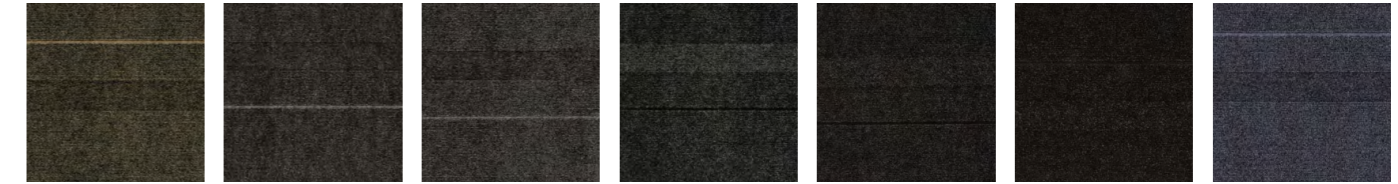
Colour Fastness To Light: Minimum grade 6

Flammability: Euroclass Bfl-s1



lateral®

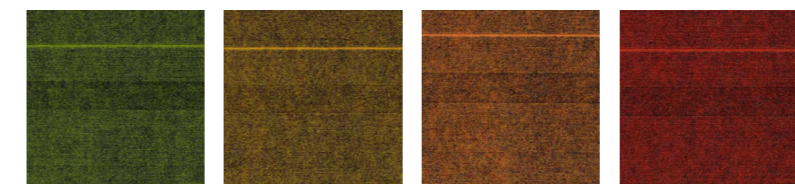
lateral® is the definitive product offering for all commercial interiors, schools, public buildings, residential schemes and design and build projects. **lateral's** 'ground-breaking' design stems from our innovative, structure bonded manufacturing technology using an unusual mix of textures from cut through to loop pile. It is available in a range of 18 colours.



12812 quartz layer 12826 pewter cast 12830 diamond bolt 12806 steel cable 12828 suede ribbon 12829 black tar 12823 ink bar



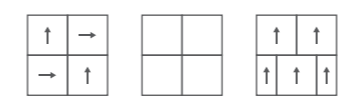
12827 blue bay 12824 lavender star 12820 purple patch 12816 pink gin 12831 indigo run 12822 turquoise gem 12825 emerald green



12802 lime light 12818 gold finger 12801 sunset strip 12804 scarlet ribbon

Specification

Product Description: Structure Bonded®
Pile Yarn Description: 85% Polypropylene 15% Nylon
Tile Dimensions: 50 cm x 50 cm
Total Thickness: 8.0 mm +/-10%
Pile Weight: 1000 g/m²
Castor Chair Rating: BS EN 985 Pass
Body Voltage Test: BS ISO 6356:2000 <2kV
Colour Fastness To Light: Minimum grade 6
Flammability: Euroclass Bfl-s1

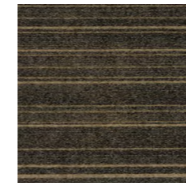


zip

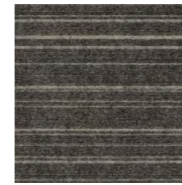
zip is the next generation in structure-bonded® design, evolving from the technology that created lateral®.

zip uses subtle texture and contrasting colour for a striking effect. Combine **zip** with code and lateral® to produce a unique floor design.

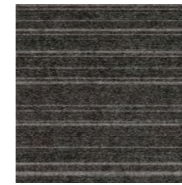
structure bonded®



12912 cool stone



12926 pewter track



12930 diamond coal



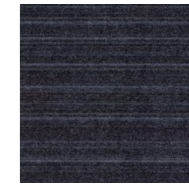
12906 metal shock



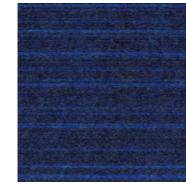
12928 night suede



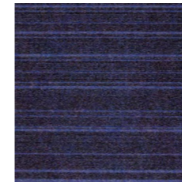
12929 pitch black



12923 ink film



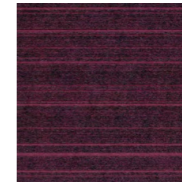
12927 blue reef



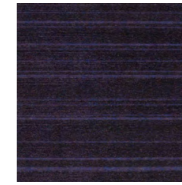
12924 lavender seed



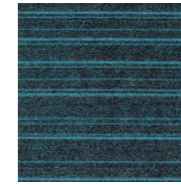
12920 deep purple



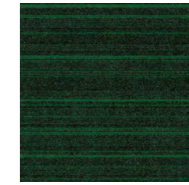
12916 pink panther



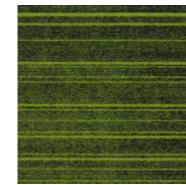
12931 indigo stack



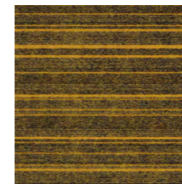
12922 turquoise opal



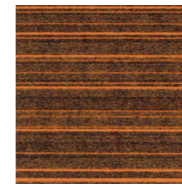
12925 emerald city



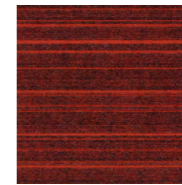
12902 lime zest



12918 rolled gold



12901 sun burst



12904 scarlet fever

Specification

Product Description: Structure Bonded®

Pile Yarn Description: 85% Polypropylene 15% Nylon

Tile Dimensions: 50 cm x 50 cm

Total Thickness: 8.0 mm +/-10%

Pile Weight: 1000 g/m²

Castor Chair Rating: BS EN 985 Pass

Body Voltage Test: BS ISO 6356:2000 <2kV

Colour Fastness To Light: Minimum grade 6

Flammability: Euroclass Bfl-s1



code

code is the next generation in structure-bonded® design, evolving from the technology that created lateral®.

code uses subtle contrasting stripes of colour and texture for a stylish defined look. Combine **code** with zip and lateral® to produce a unique floor design.



20201 guyana moss 20202 bermuda lime 20206 green turtle 20225 saona sage 20209 trinidad sea 20211 barthelemy green 20213 serranilla stone



20203 caicos azure 20220 barbados blue 20223 nevis blue 20253 key west blue 20252 nassau skies 20254 puerto rico purple 20212 marie galante purple



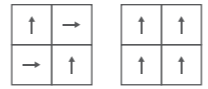
20249 martinique maroon 20210 bellamy red 20205 bahamas orange 20204 tortola gold 20246 tobago sands 20258 panama brown 20208 belize greige



20214 st martin sands 20245 dominica dawn 20242 antigua steel 20230 grenada grey 20207 st lucia night 20260 st kitts basalt 20259 montserrat black

Specification

- Product Description: Low Level Loop
- Pile Yarn Description: 100% Solution Dyed Nylon (Polyamide-PA)
- Tile Dimensions: 50 cm x 50 cm, 25 cm x 100 cm
- Pile Height: 4 mm +/-10%
- Total Thickness: 6.5 mm +/-10%
- Pile Weight: 600 g/m²
- Tufts per m²: 196,500 g/m²
- Castor Chair Rating: BS EN 985 Pass
- Body Voltage Test: BS ISO 6356:2000 <2kV
- Colour Fastness To Light: Minimum grade 6
- Flammability: Euroclass Bfl-s1



tivoli tile

tivoli presents a high performance loop pile (class 33) product offering, made with 100% solution dyed nylon and including **tivoli**, **tivoli online** and **tivoli multiline**.

loop pile



online
20605 pamanzi earth



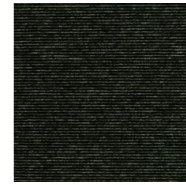
online
20606 baltic amber



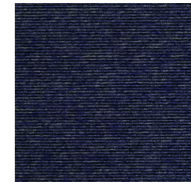
online
20603 tahitian pearl



online
20604 sardinian coral



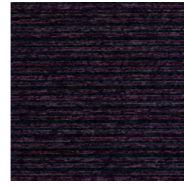
online
20602 cyclades jade



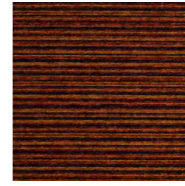
online
20601 atlantic cobalt



multiline
20701 ibiza blue



multiline
20705 mauritius mauve



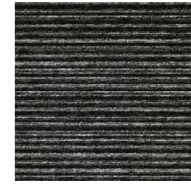
multiline
20706 reunion terracotta



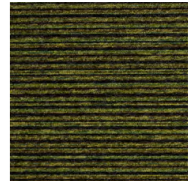
multiline
20704 polynesia beige



multiline
20703 melanesia grey



multiline
20707 tenerife black



multiline
20702 pacific green

Specification

Product Description: Low Level Loop

Pile Yarn Description: 100% Solution Dyed Nylon (Polyamide-PA)

Tile Dimensions: 50 cm x 50 cm, 25 cm x 100 cm

Pile Height: 4 mm +/-10%

Total Thickness: 6.5 mm +/-10%

Pile Weight: 600 g/m²

Tufts per m²: 196,500 g/m²

Castor Chair Rating: BS EN 985 Pass

Body Voltage Test: BS ISO 6356:2000 <2kV

Colour Fastness To Light: Minimum grade 6

Flammability: Euroclass Bfl-s1



tivoli tile (cont.)

Varied plain, **tivoli**, classic pinstripe, **tivoli online** and contemporary striped, **tivoli multiline**, designs can be used individually or in a bespoke arrangement, with the expansive, modern colour palette enabling classic, neutral schemes or innovative, creative layouts.



20202 bermuda lime 20206 green turtle 20211 barthelemy green 20213 serranilla stone 20203 caicos azure 20220 barbados blue 20253 key west blue



20252 nassau skies 20254 puerto rico purple 20212 marie galante purple 20249 martinique maroon 20210 bellamy red 20205 bahamas orange 20204 tortola gold



20208 belize greige 20214 st martin sands 20245 dominica dawn 20242 antigua steel 20207 st lucia night 20259 montserrat black



multiline 20701 ibiza blue multiline 20705 mauritius mauve multiline 20706 reunion terracotta multiline 20704 polynesia beige multiline 20703 melanesia grey multiline 20707 tenerife black multiline 20702 pacific green

Specification

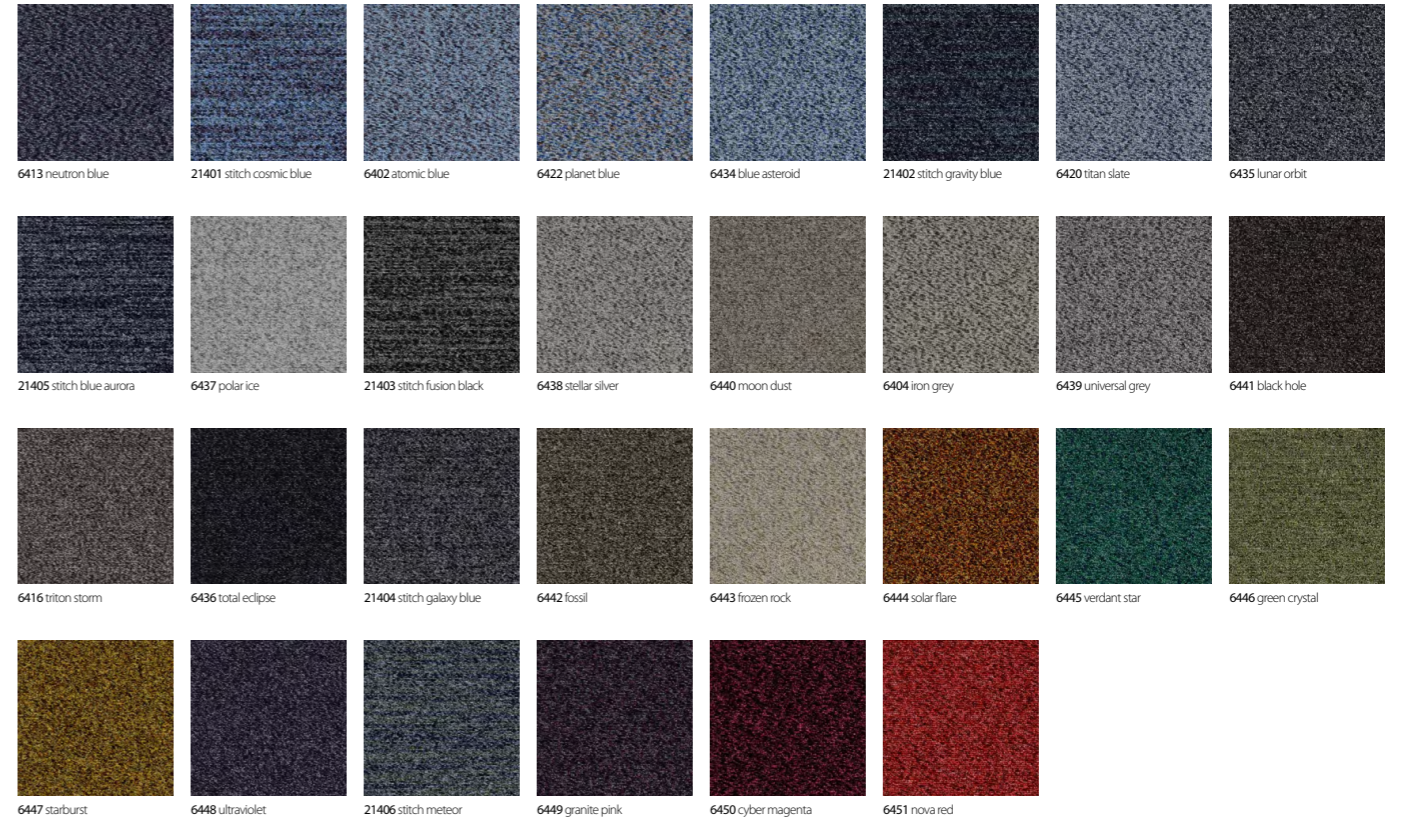
Product Description: Low Level Loop
Pile Yarn Description: 100% Solution Dyed Nylon (Polyamide-PA)
Tile Dimensions: 25 cm x 100 cm
Pile Height: 4 mm +/-10%
Total Thickness: 6.5 mm +/-10%
Pile Weight: 600 g/m²
Tufts per m²: 196,500 g/m²
Castor Chair Rating: BS EN 985 Pass
Body Voltage Test: BS ISO 6356:2000 <2kV
Colour Fastness To Light: Minimum grade 6
Flammability: Euroclass Bfl-s1



tivoli plank

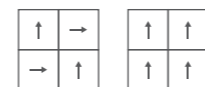
tivoli carpet planks offer two loop pile designs – a solid colour **tivoli** and a stripe **tivoli multiline**. The colour selection creates a broad palette with complementary colours across the two designs developing creative installation options.

tivoli carpet planks are made with 100% solution dyed nylon and are suitable for heavy commercial use (class 33).



Specification

- Product Description:** Low Level Loop
- Pile Yarn Description:** 100% Nylon (Polyamide PA) Space Dyed & Recycled Solution Dyed
- Tile Dimensions:** 50 cm x 50 cm
- Pile Height:** 4.8 mm +/-10%
- Total Thickness:** 7.3 mm +/-10%
- Pile Weight:** 550 g/m²
- Tufts per m²:** 196,500 g/m²
- Castor Chair Rating:** BS EN 985 Pass
- Body Voltage Test:** BS ISO 6356:2000 <2kV
- Colour Fastness To Light:** Minimum grade 6
- Flammability:** Euroclass Bfl-s1



infinity

infinity offers 2 designs – **infinity** and **infinity stitch** in a large well balanced palette of 30 colours.

Both the classic flecked design of **infinity** and the unique directional organic pattern of **infinity stitch** are ideal for various type of interiors like large open-plan office spaces, smaller individual offices, corridors, reception areas or public buildings.



denim
■ 21502 ■ 22502



indigo
■ 21503 ■ 22503



purple
■ 21506 ■ 22506



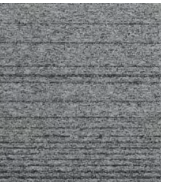
ruby
■ 21504 ■ 22504



silver
■ 21501 ■ 22501



zinc
■ 21508 ■ 22508



smoke
■ 21509 ■ 22509



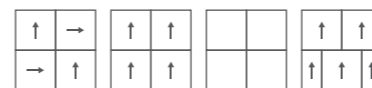
crater
■ 21505 ■ 22505



abyss
■ 21507 ■ 22507

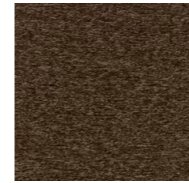
Specification

- Product Description:** Low Level Loop
- Pile Yarn Description:** 100% Solution Dyed Nylon (Polyamide-PA)
- Tile Dimensions:** 50 cm x 50 cm, 25 cm x 100 cm
- Pile Height:** 3.5 mm +/-10%
- Total Thickness:** 6.0 mm +/-10%
- Pile Weight:** 620 g/m² +/-10%
- Tufts per m²:** 235,800 g/m² +/-10%
- Castor Chair Rating:** BS EN 985 Pass
- Body Voltage Test:** BS ISO 63562000 <2kV
- Colour Fastness To Light:** Minimum grade 6
- Flammability:** Euroclass Bfl-s1



grade tile & plank

The name **grade** links to the graduation between lighter tones and darker ones within each colour option. A researched and considered palette of nine colours gives great flexibility and longevity, whether using a single selection or creating your own combinations. Colours can subtly diffuse from one to another, or create drama by using blocks of contrasted areas



51435 fudge



51436 timber



51405 honey



51410 charcoal



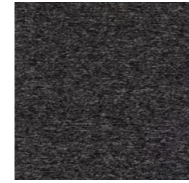
51401 slate



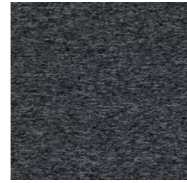
51402 flint



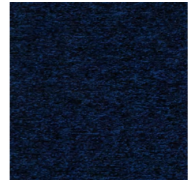
51433 moonlight



51412 deep sea



51434 dumulus



51403 midnight



51432 atmosphere



51413 crystal



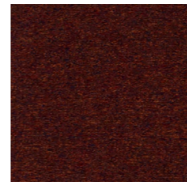
51418 delft



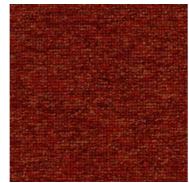
51411 ocean



51407 everglade



51406 spice



51437 poppy



51438 sandstone

Specification

Product Description: Low Level Loop

Pile Yarn Description: 100% Solution Dyed Nylon

Tile Dimensions: 50 cm x 50 cm

Pile Height: 4.5 mm +/-10%

Total Thickness: 7.0 mm +/-10%

Pile Weight: 550 g/m²

Tufts per m²: 176,850 g/m²

Castor Chair Rating: BS EN 985 Pass

Body Voltage Test: BS ISO 6356:2000 <2kV

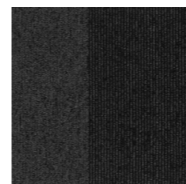
Colour Fastness To Light: Minimum grade 6

Flammability: Euroclass Bfl-s1



balance

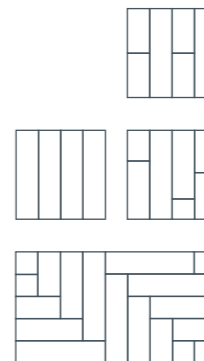
balance is a 100% solution dyed nylon level loop pile carpet tile, ideal for commercial, education and public sector projects. **balance's** 18 colourways have been inspired by an eclectic global palette which work equally well when used subtly or boldly over large areas or as accents to define smaller floor spaces.



black
■ 21001 ■ 22001

Specification

Product Description: Low Level Loop
Pile Yarn Description: 100% Solution Dyed Nylon (Polyamide-PA)
Tile Dimensions: 50 cm x 50 cm, 25 cm x 100 cm
Pile Height: 4.5 mm +/-10%
Total Thickness: 7.0 mm +/-10%
Pile Weight: 550 g/m²
Tufts per m²: 176,850 g/m²
Castor Chair Rating: BS EN 985 Pass
Body Voltage Test: BS ISO 63562:2000 <2kV
Colour Fastness To Light: Minimum grade 6
Flammability: Euroclass Bfl-s1

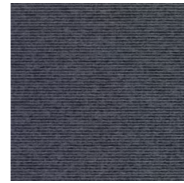


balance echo tile & plank

balance echo black is a dark, low level loop, carpet tile and plank design in 100% solution dyed nylon. With a combination of stripes and blocks this heavy contract (class 33), flexible design works in a mixture of installation styles. Able to be combined with both bright and neutral inserts, this multi-tile/multi-plank design enables the simple creation of an impressive installation.



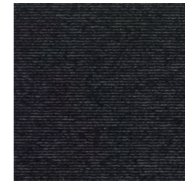
19701 dark sepia



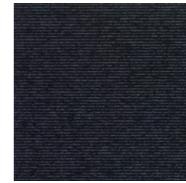
19702 space dust



19703 pencil lead



19704 classic grey



19705 grey slate



19706 blackboard

Specification

Product Description: Low Level Loop

Pile Yarn Description: 100% Solution Dyed Nylon (Polyamide-PA)

Tile Dimensions: 50 cm x 50 cm

Pile Height: 4.5 mm +/-10%

Total Thickness: 7.0 mm +/-10%

Pile Weight: 550 g/m²

Tufts per m²: 176,850 g/m²

Castor Chair Rating: BS EN 985 Pass

Body Voltage Test: BS ISO 63562:2000 <2kV

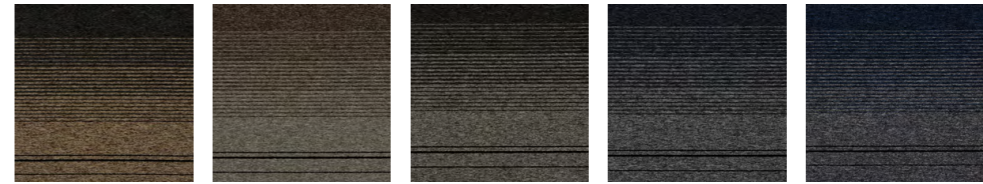
Colour Fastness To Light: Minimum grade 6

Flammability: Euroclass Bfl-s1

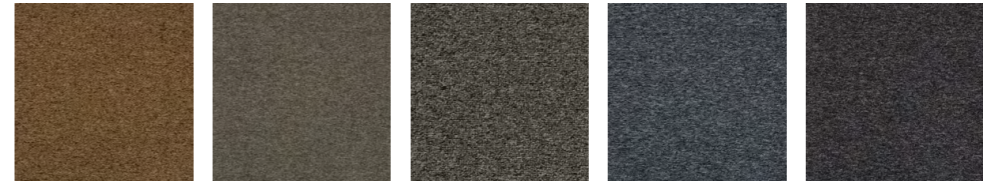


balance stripe

balance stripe is a loop pile range in the Burmatex portfolio. Its timeless appearance combined with a classic and contemporary colour palette is perfect for offices, corporate buildings or commercial spaces. This BREEAM A+ rated collection can be easily combined with other Burmatex products from tufted, structured bonded and fibre bonded collections to create a unique scheme.



18804 earth 18805 rock 18801 storm 18803 cove 18802 marine



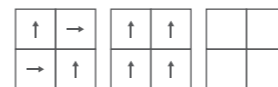
51436 timber 51441 cotton 51402 flint 51434 cumulus 51412 deep sea



51440 soot 51435 fudge 51410 charcoal 51433 moonlight 51403 midnight

Specification

- Product Description:** Low Level Loop
- Pile Yarn Description:** 100% Solution Dyed Nylon (Polyamide-PA)
- Tile Dimensions:** 50 cm x 50 cm
- Pile Height:** 4.5 mm +/-10%
- Total Thickness:** 7.0 mm +/-10%
- Pile Weight:** 550 g/m²
- Tufts per m²:** 176,850 g/m²
- Castor Chair Rating:** BS EN 985 Pass
- Body Voltage Test:** BS ISO 6356:2000 <2kV
- Colour Fastness To Light:** Minimum grade 6
- Flammability:** Euroclass Bfl-s1



balance atomic

balance atomic is an exciting, contemporary loop pile, with a colour palette ranging from warm beiges, through greys, to cool blues. This BREEAM A+ rated collection comes in 3 co-ordinating designs; a plain, a pinstripe and a versatile, random effect, all of which work alone or complement each other perfectly to create a stylish, individual look for any interior.

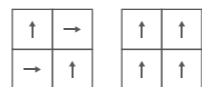
balance atomic storm, marine, cove, earth and rock are multi tile designs. Each box of tiles contains a selection of these designs which can be laid monolithic, quarter turn or random to achieve the desired effect.



18501 grey

Specification

- Product Description:** Low Level Loop
- Pile Yarn Description:** 100% Solution Dyed Nylon (Polyamide-PA)
- Tile Dimensions:** 50 cm x 50 cm
- Pile Height:** 4.5 mm +/-10%
- Total Thickness:** 7.0 mm +/-10%
- Pile Weight:** 550 g/m²
- Tufts per m²:** 176,850 g/m²
- Castor Chair Rating:** BS EN 985 Pass
- Body Voltage Test:** BS ISO 6356:2000 <2kV
- Colour Fastness To Light:** Minimum grade 6
- Flammability:** Euroclass Bfl-s1



balance greyscale

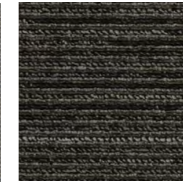
balance greyscale is a new dark grey 'field' tile which co-ordinates beautifully with most products from burmatex, including the 8 vibrant colourways from Strands and the new stylish Balance Atomic range. This BREEAM A+ rated loop pile tile provides a subtle, plain contrast against striped or textured areas, for meeting or breakout areas in offices or other corporate buildings.



15606 tangle cube



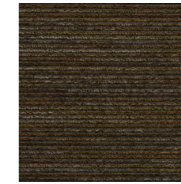
15607 square prism



15612 silver vector



15604 bohemian dome



15605 banded torus



15608 polar curve



15603 twisted sphere

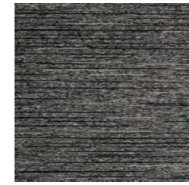
Specification

Product Description: Textured Loop Pile
Pile Yarn Description: 100% Solution Dyed & Spaced Dyed Nylon (Polyamide-PA)
Tile Dimensions: 50 cm x 50 cm
Pile Height: 3.5 mm +/-10%
Total Thickness: 6.0 mm +/-10%
Pile Weight: 550 g/m²
Tufts per m²: 188,976 g/m²
Castor Chair Rating: BS EN 985 Pass
Body Voltage Test: BS ISO 6356:2000 <2kV
Colour Fastness To Light: Minimum grade 6
Flammability: Euroclass Bfl-s1



surface

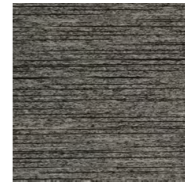
surface is a 100% nylon textured loop pile carpet tile created to coordinate beautifully with any commercial interior scheme. Combinations of solution and space dyed nylon create eight versatile colourways, from earthy tones through to cool neutrals. Architectural exteriors, facades and mathematical and manufactured surfaces inspire the visually textured appearance, creating a feeling of dimension and depth in a practical textured loop construction. This hard wearing, versatile and great value product is suitable for use in any commercial interior project.



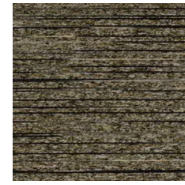
19802 blue tin



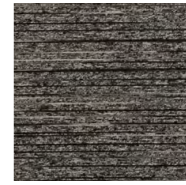
19805 burnished copper



19801 galvanised steel



19806 green nickel



19804 permanganate



19803 warmed lead

Specification

Product Description: Textured Loop Pile

Pile Yarn Description: 100% Solution Dyed & Space Dyed Nylon (Polyamide-PA)

Tile Dimensions: 50 cm x 50 cm

Total Thickness: 5 mm +/-10%

Pile Weight: 620 g/m²

Tufts per m²: 235.800 g/m²

Castor Chair Rating: BS EN 985 Pass

Body Voltage Test: BS ISO 6356:2000 <2kV

Colour Fastness To Light: Minimum grade 6

Flammability: Euroclass Bfl-s1



tandem

m is a high performance tile class 33, central to the design collection; this simply styled tile presents six colours from a natural palette which can be laid both monolithically and quarter turn suiting small and large spaces.

tandem works individually and alongside other ranges to complement and enhance a design colour; with a textured effect and enduring finish this gentle design effortlessly complements various finishes and furnishings.



10901 down pink 10902 down red 10904 down tomato 10908 down purple 10906 down turquoise 10907 down blue 19909 down emerald



19912 down olive 19911 down yellow 10905 down mocha 19910 down light grey 19503 down dark grey



19501 up pink 19502 up red 19504 up tomato 19508 up purple 19506 up turquoise 19507 up blue 19509 up emerald



19512 up olive 19511 up yellow 19505 up mocha 19510 up light grey 19503 up dark grey

Specification

Product Description: Textured Loop Pile
Pile Yarn Description: 100% Solution Dyed Nylon (Polyamide-PA)
Tile Dimensions: 50 cm x 50 cm
Pile Height: 4 mm +/-10%
Total Thickness: 6.5 mm +/-10%
Pile Weight: 580 g/m²
Tufts per m²: 176,850g/m²
Castor Chair Rating: BS EN 985 Pass
Body Voltage Test: BS ISO 6356:2000 <2kV
Colour Fastness To Light: Minimum grade 6
Flammability: Euroclass Bfl-s1

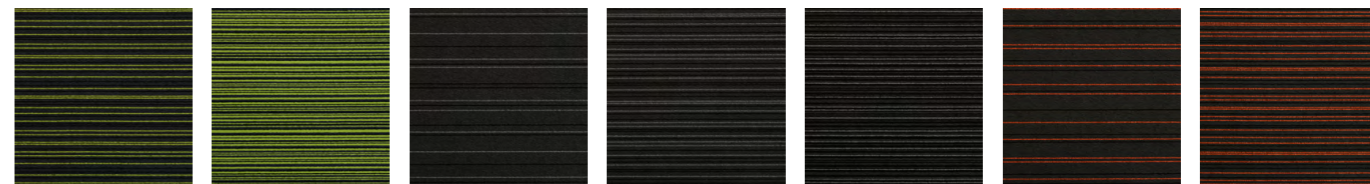


up/down

up/down is a high performance loop pile tile class 33, ideally suited for use in any commercial space as the flexible designs' contemporary touches enhance a classic solid colour, maintaining fundamental appearance and quality. The coordinated, modern designs of the reversed pairs of vibrant up and cooler down flooring tiles enrich a space flexibly, with 24 colours making 12 reversed pairs across a balanced palette.



17406 aqua 5 17306 aqua 10 17206 aqua 60 17407 blue 5 17307 blue 10 17207 blue 60 17405 lime 5



17305 lime 10 17205 lime 60 17408 night 5 17308 night 10 17208 night 60 17403 orange 5 17303 orange 10



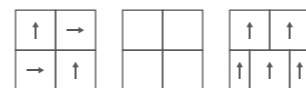
17203 orange 60 17401 pink 5 17301 pink 10 17201 pink 60 17402 scarlet 5 17302 scarlet 10 17202 scarlet 60



17404 yellow 5 17304 yellow 10 17204 yellow 60

Specification

- Product Description:** Textured Loop Pile
- Pile Yarn Description:** 100% Solution Dyed Nylon
- Tile Dimensions:** 50 cm x 50 cm
- Pile Height:** 4.5 mm +/-10%
- Total Thickness:** 7.0 mm +/-10%
- Pile Weight:** 680 g/m²
- Tufts per m²:** 180,976 g/m²
- Castor Chair Rating:** BS EN 985 Pass
- Body Voltage Test:** BS ISO 6356:2000 <2kV
- Colour Fastness To Light:** Minimum grade 6
- Flammability:** Euroclass Bfl-s1



strands

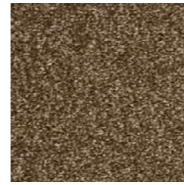
strands is a vibrant and exciting 100% Nylon textured loop carpet tile range offering almost limitless opportunities for floor design.

Each tile starts with a background colour of mid grey with a black pinstripe and is then accented by one of eight striking key note colour stripes in three versions: - Strands 5; Strands 10 and Strands 60; so named because the key note colour stripe takes up 5%, 10% and 60% of the carpet tile respectively.

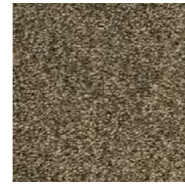
Strands offers the designer combinations of pattern and colour to create and develop unique floor designs starting from tessellated or brick in 5, 10 or 60 up to amazing effects such as random monolithic, brick repeat, chequerboard using combinations of 5, 10 and 60. Schemes can be further enhanced using combinations of other burmatex ranges.



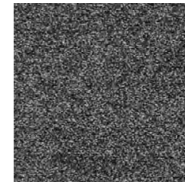
52026 shadow



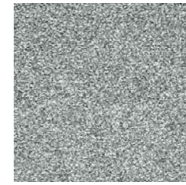
52039 mocha



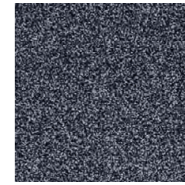
52040 taupe



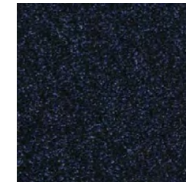
52011 onyx



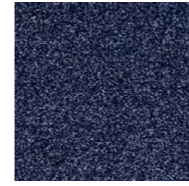
52009 pyrite



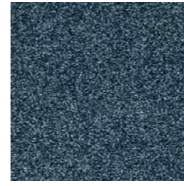
52025 galena



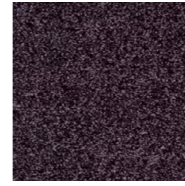
52028 night sky



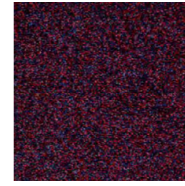
52018 tanzanite



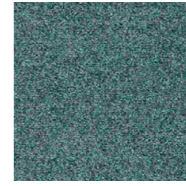
52001 blue john



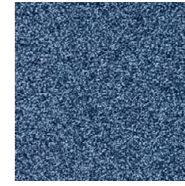
52020 black opal



52014 flash fire



52016 turquoise



52008 tourmaline

Specification

Product Description: Cut Pile

Pile Yarn Description: 100% Solution Dyed Nylon

Tile Dimensions: 50 cm x 50 cm

Total Thickness: 8.0 mm +/-10%

Pile Weight: 850 g/m²

Tufts per m²: 157,480 g/m²

Castor Chair Rating: BS EN 985 Pass

Body Voltage Test: BS ISO 6356:2000 <2kV

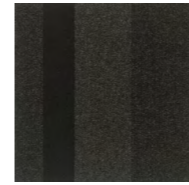
Colour Fastness To Light: Minimum grade 6

Flammability: Euroclass Bfl-s1



origin

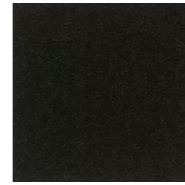
origin is a luxurious, contemporary cut pile carpet tile, comprising 13 shades which create a wonderful broadloom appearance when used in large scale or smaller breakout areas. Made from 100% Premium Branded Solution Dyed Nylon, it is suitable for boardrooms, reception areas and most commercial spaces.



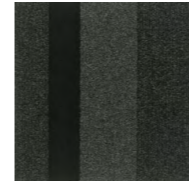
18703 graphite block



18701 graphite



18702 graphite stripe



18706 sterling block



18704 sterling



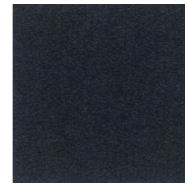
18705 sterling stripe



18709 cobalt block



18707 cobalt



18708 cobalt stripe

Specification

Product Description: Performance Barrier System

Pile Yarn Description: 100% Solution Dyed Nylon (Polyamide-PA)

Tile Dimensions: 50 cm x 50 cm

Total Thickness: 10.0 mm +/-10%

Pile Weight: 920 g/m²

Tufts per m²: 110,236 g/m²

Castor Chair Rating: BS EN 985 Pass

Body Voltage Test: BS ISO 6356:2000 <2KV

Colour Fastness To Light: Minimum grade 6

Flammability: Euroclass Bfl-s1



armour

armour offers the ultimate in entrance performance with its combination of absorber and scraper yarns, which protect internal floor finishes by trapping up to 90% of dirt and moisture, tracked in by foot and wheel traffic. The combination of plain, stripe and block stripes in the key blending colours of dark grey, warm grey and blue, will coordinate beautifully with any flooring design scheme. Armour is ideal for primary and secondary entrance areas, as well as lobby, lift areas and staircases.



1440 grey 1428 blue 1439 brown 1446 fawn 1436 green

Specification

Product Description: Fibre Bonded
Pile Yarn Description: 100% Polypropylene
Roll Length: 30m
Roll Width: 2m
Total Thickness: 10.0 mm +/-10%
Total Weight: 1490 g/m² +/-10%
Colour Fastness To Light: Minimum grade 6
Flammability: Euroclass EF-s1

7700 grimebuster

7700 grimebuster is a heavy contract ribbed fibre bonded carpet. It is ideal for withstanding heavy footfall environments and creating an effective dirt barrier for busy entrances, which lead directly from outside environments.



1640 newmarket grey 1628 haydock blue 1639 goodwood brown 1646 wincanton fawn 1636 curragh green

Specification

Product Description: Fibre Bonded
Pile Yarn Description: 100% Polypropylene
Tile Dimensions: 50 cm x 50 cm
Total Thickness: 12.0 mm +/-10%
Pile Weight: 1170 g/m²
Total Weight: 4300 g/m²
Colour Fastness To Light: Minimum grade 6
Flammability: Euroclass BF-s1



grimebuster 50

grimebuster 50 is a heavy contract fibre bonded carpet tile with a deep diagonal rib surface.

It is ideal for withstanding heavy footfall environments and creating an effective dirt barrier for busy entrances, which lead directly from outside environments.



7840 charcoal 7828 blue 7839 brown 7846 fawn 7836 green

Specification

Product Description: Fibre Bonded
Pile Yarn Description: 100% Polypropylene
Roll Length: 30m
Roll Width: 2m
Total Thickness: 10.0 mm +/-10%
Total Weight: 1490 g/m² +/-10%
Colour Fastness To Light: Minimum grade 6
Flammability: Euroclass EF-s1

7800 chevrolay

7700 chevrolay is a heavy contract chevron ribbed fibre bonded carpet. It is ideal for withstanding heavy footfall environments and creating an effective dirt barrier for busy entrances, which lead directly from outside environments.



6240 alpha grey 6228 beta blue 6239 theta brown 6246 kappa fawn 6236 gamma green

Specification

Product Description: Fibre Bonded
Pile Yarn Description: 100% Polypropylene
Tile Dimensions: 50 cm x 50 cm
Total Thickness: 12.0 mm +/-10%
Pile Weight: 1490 g/m²
Total Weight: 4300 g/m²
Colour Fastness To Light: Minimum grade 6
Flammability: Euroclass BF-s1



chevrolay 50

chevrolay 50 is a heavy contract chevron ribbed fibre bonded tile with deep chevron design.

It is ideal for withstanding heavy footfall environments and creating an effective dirt barrier for busy entrances, which lead directly from outside environments.

characteristics of the products

Name	Dimensions Rolls (R) / Tiles (T)	Product Type	Pile Description	Carpet Pile Weight g/m ²	Tile Total Weight g/m ²	Carpet Total Thickness mm	Tile Total Thickness mm	Number of tufts x/m ²	Backing	Flammability EN13501	Impact Noise	Number of SKUs	Suitable for Underfloor Heating	Body Voltage kV	Wear Classification	Colour Fastness to Light BS EN ISO 105	Slip Resistant	Castor Chair EN985
3230 Classic	R 2m x 30m	Fibre Bonded Sheet	85%PP 15%PA	915		4.8		-	Uniform	Cfl-S1	17 dB	18	Yes below 27°	<2.0	HC	>6	NPD	Pass
4200 Sidewalk	R 2m x 30m	Fibre Bonded Sheet	85%PP 15%PA	950		6		-	Uniform	Efl-S1	18 dB	32	Yes below 27°	<2.0	HC	>6	NPD	Pass
4200 SidewalkFR	R 2m x 30m	Fibre Bonded Sheet	85%PP 15%PA	950		6		-	Uniform	Cfl-S1	18 dB	32	Yes below 27°	<2.0	HC	>6	NPD	Pass
Cordiale	T 50cm x 50cm	Fibre Bonded Tile	85%PP 15%PA	950	4200	6	7.8	-	Accummen®	Bfl-S1		32	Yes below 27°	<2.0	HC	>6	NPD	Pass
4400 Broadway	R 2m x 30m	Fibre Bonded Sheet	85%PP 15%PA	975		6.5		-	Uniform	Efl-S1	19 dB	32	Yes below 27°	<2.0	HC	>6	NPD	Pass
4400 BroadwayFR	R 2m x 30m	Fibre Bonded Sheet	85%PP 15%PA	975		6.5		-	Uniform	Cfl-S1	19 dB	32	Yes below 27°	<2.0	HC	>6	NPD	Pass
Academy	T 50cm x 50cm	Fibre Bonded Tile	85%PP 15%PA	975	4200	6.5	7.8	-	Accummen®	Bfl-S1		32	Yes below 27°	<2.0	HC	>6	NPD	Pass
Rialto	T 50cm x 50cm	Fibre Bonded Tile	100%PP	1000	4450	6	7.8	-	Accummen®	Bfl-S1		12	Yes below 27°	<2.0	HC	>6	NPD	Pass
5500 Sheet	R 2m x 30m	Fibre Bonded Sheet	85%PP 15%PA	1150		6.5		-	Uniform	Efl-S1	21 dB	18	Yes below 27°	<2.0	HC	>6	NPD	Pass
Velour Excel	T 50cm x 50cm	Fibre Bonded Tile	85%PP 15%PA	1200	4900	8	10	-	Accummen®	Bfl-S1	21 dB	18	Yes below 27°	<2.0	HC	>6	NPD	Pass
Lateral	T 50cm x 50cm	Structure Bonded	85%PP 15%PA	950	4200	5.5*	7.8	-	Accummen®	Bfl-S1	18 dB	18	Yes below 27°	<2.0	HC	>6	NPD	Pass
Zip	T 50cm x 50cm	Structure Bonded	85%PP 15%PA	1000	4250	5.5*	8	-	Accummen®	Bfl-S1	17 dB	11	Yes below 27°	<2.0	HC	>6	NPD	Pass
Code	T 50cm x 50cm	Structure Bonded	85%PP 15%PA	1000	4250	5.5*	8	-	Accummen®	Bfl-S1	17 dB	11	Yes below 27°	<2.0	HC	>6	NPD	Pass
Tivoli	T 50cm x 50cm P 25 cm x 100 cm	Level Loop	100% Nylon(PA)	600	4050	4	6.5	196500	Accummen®	Bfl-S1	23 dB	38	Yes below 27°	<2.0	Class 33	>6	NPD	Pass
Infinity	T 50cm x 50cm	Level Loop	100% Nylon(PA)	550	4000	4.8	7.3	196500	Accummen®	Bfl-S1	28 dB	18	Yes below 27°	<2.0	Class 33	>6	NPD	Pass
Grade	T 50cm x 50cm	Level Loop	100% Nylon(PA)	620	4100	3.5	6	235.800	Accummen®	Bfl-S1	21dB	9	Yes below 27°	<2.0	Class 33	>6	NPD	Pass
Balance	T 50cm x 50cm	Level Loop	100% Nylon(PA)	550	4300	4.5	7	176850	Accummen®	Bfl-S1	24 dB	18	Yes below 27°	<2.0	Class 33	>6	NPD	Pass
Balance Echo	T 50cm x 50cm P 25 cm x 100 cm	Level Loop	100% Nylon(PA)	550	4300	4.5	7	176850	Accummen®	Bfl-S1	24 dB	18	Yes below 27°	<2.0	Class 33	>6	NPD	Pass
Balance Stripe	T 50cm x 50cm	Level Loop	100% Nylon(PA)	550	4300	4.5	7	176850	Accummen®	Bfl-S1	24 dB	6	Yes below 27°	<2.0	Class 33	>6	NPD	Pass
Balance Atomic	T 50cm x 50cm	Level Loop	100% Nylon(PA)	550	4300	4.5	7	176850	Accummen®	Bfl-S1	24 dB	20	Yes below 27°	<2.0	Class 33	>6	NPD	Pass
Balance Greyscale	T 50cm x 50cm	Level Loop	100% Nylon(PA)	550	4300	4.5	7	176850	Accummen®	Bfl-S1	24 dB	1	Yes below 27°	<2.0	Class 33	>6	NPD	Pass
Surface	T 50cm x 50cm	Textured Loop	100% Nylon(PA)	550	4200	3.5	6	188976	Accummen®	Bfl-S1		7	Yes below 27°	<2.0	Class 33	>6	NPD	Pass
Tandem	T 50cm x 50cm	Textured Loop	100% Nylon(PA)	620	4100	3.15	5	235800	Accummen®	Bfl-S1		6	Yes below 27°	<2.0	Class 33	>6	NPD	Pass
Up/Down	T 50cm x 50cm	Textured Loop	100% Nylon(PA)	580	4330	4	6.5	176850	Accummen®	Bfl-S1		24	Yes below 27°	<2.0	Class 33	>6	NPD	Pass
Strands	T 50cm x 50cm	Textured Loop	100% Nylon(PA)	680	4430	4.5	7	180976	Accummen®	Bfl-S1	23 dB	24	Yes below 27°	<2.0	Class 33	>6	NPD	Pass
Origin	T 50cm x 50cm	Cut Pile	100% Nylon(PA)	850	4300	5	8	157480	Accummen®	Bfl-S1	23 dB	13	Yes below 27°	<2.0	Class 33	>6	NPD	Pass

entrance matting

Name	Dimensions Rolls (R) / Tiles (T)	Product Type	Pile Description	Carpet Pile Weight g/m ²	Total Weight g/m ²	Thickness mm	Backing	Flammability EN13501	Number of SKUs	Wear Classification	Colour Fastness to Light BS EN ISO 105	Slip Resistant
Armour	T 50cm x 50cm	Cut Pile	100%PA	920	4500	10	Accummen®	Bfl-S1	9	Class 33	>6	DS
7700 Grimebuster	R 2m x 30m	Fibre Bonded Sheet	100% PP		1490	10	Uniform	Efl-S1	5	HC	>6	NPD
Grimebuster 50	T 50cm x 50cm	Fibre Bonded Tile	100% PP	1490	4300	12	Accummen®	Bfl-S1	5	HC	>6	NPD
7800 Chevrolay	R 2m x 30m	Fibre Bonded Sheet	100% PP		1490	10	Uniform	Efl-S1	5	HC	>6	NPD
Chevrolay 50	T 50cm x 50cm	Fibre Bonded Tile	100% PP	1490	4300	12	Accummen®	Bfl-S1	5	HC	>6	NPD

Appendix

7	3230 classic	33	balance
9	4200 sidewalk	35	balance echo
9	cordiale	37	balance stripe
11	4400 broadway	39	balance atomic
11	academy	41	balance greyscale
13	rialto	43	surface
15	5500 luxury	45	tandem
15	velour excel	47	up/down
17	lateral	49	strands
19	zip	51	origin
21	code	53	armour
23	tivoli tiles	55	7700 grimebuster
27	tivoli plank	55	grimebuster 50
29	infinity	57	7800 chevrolay
31	grade	57	chevrolay 50



ENVIRONMENT FRIENDLY CARPETS

Head Office

Victoria Mills, The Green
Ossett
West Yorkshire
WF5 0AN
United Kingdom

Tel: +44 (0) 1924 262525
Fax: +44 (0) 1924 280033
Email: projects@burmatex.co.uk
Web: www.burmatex.co.uk

International Enquires

international@burmatex.co.uk

Eastern Europe Office

burmatex sp. z o.o.
ul. Ostrowska 364
61-312 Poznań
Poland

Tel: + 48 61 870 58 70
Fax: + 48 61 870 58 71
Mob: + 48 601 58 69 39
email: biuro@burmatex.pl

burmatex®

Plank installation methods

Monolithic



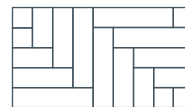
Half Drop



Random Drop



Herringbone



Tile installation methods

Quarter Turn



Monolithic



Random



Brick



Half Drop



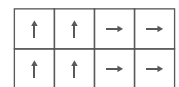
Alternate rows
rotated 180°



Alternate tiles
rotated 180°



Large Quarter Turn



Parquet

