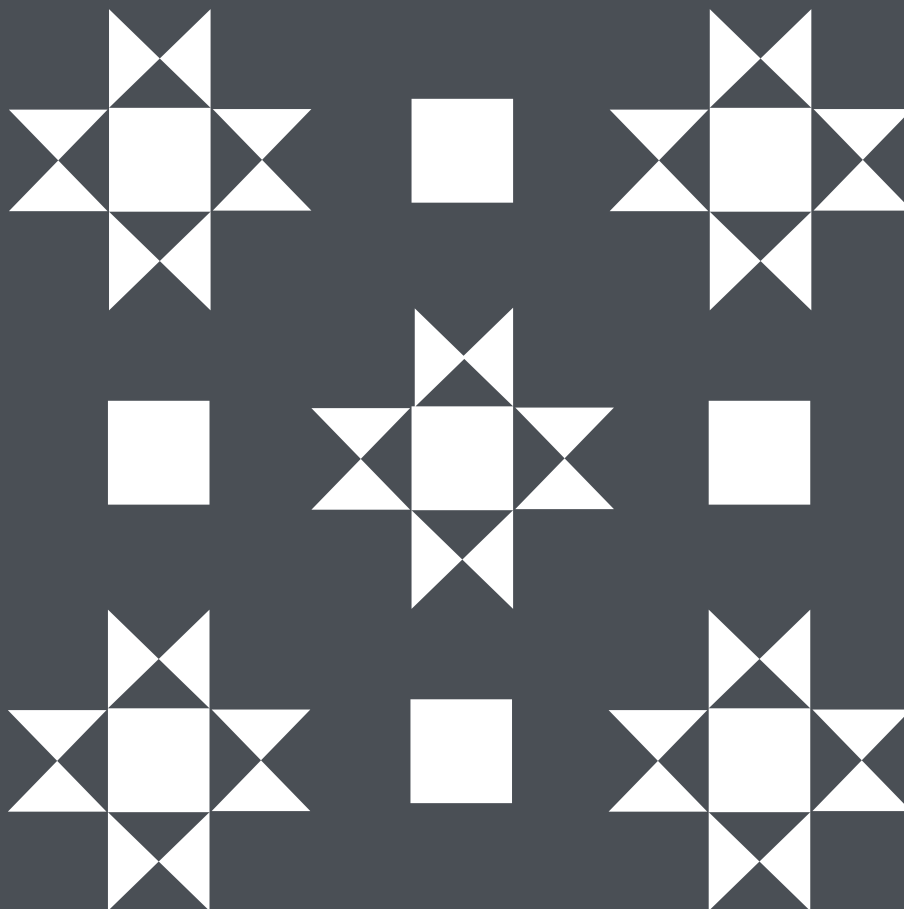
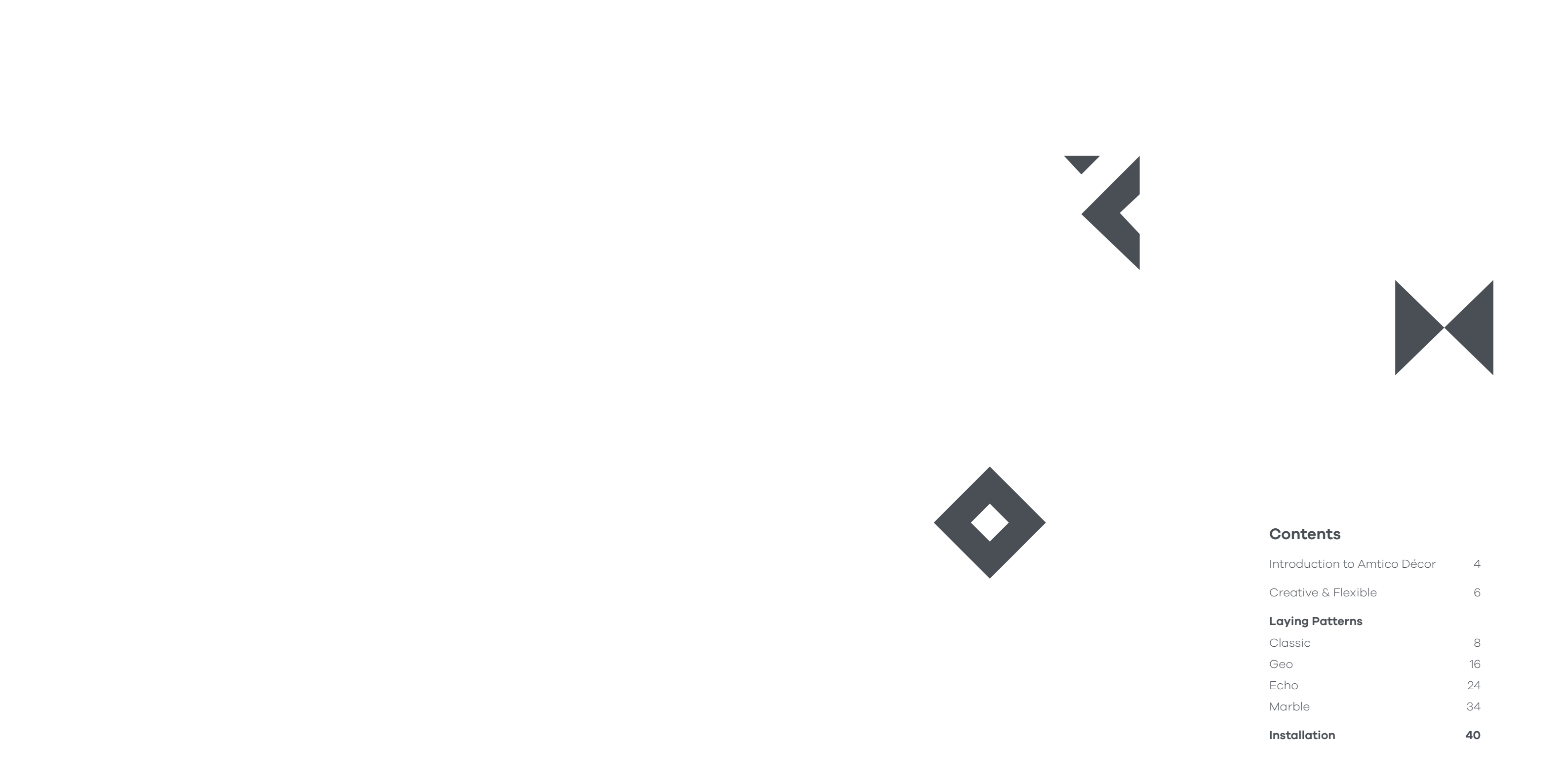


antico
signature



Décor



Contents

Introduction to Amtico Décor	4
Creative & Flexible	6
Laying Patterns	
Classic	8
Geo	16
Echo	24
Marble	34
Installation	40

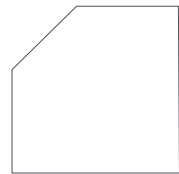
Amtico Décor: precision-cut statement floors

An artisan collection of decorative flooring, from the timeless patterns of Geo and Classic, to the modern geometry of Echo. Décor's intricate designs create a striking focal point within a field, or effectively highlight key spaces.

Pre-taped modules for easy installation
Individually cut and bevelled tiles for authenticity
1mm wear layer
Easy cleaning
20 year commercial warranty



20YR COMMERCIAL
WARRANTY



BEVELLED



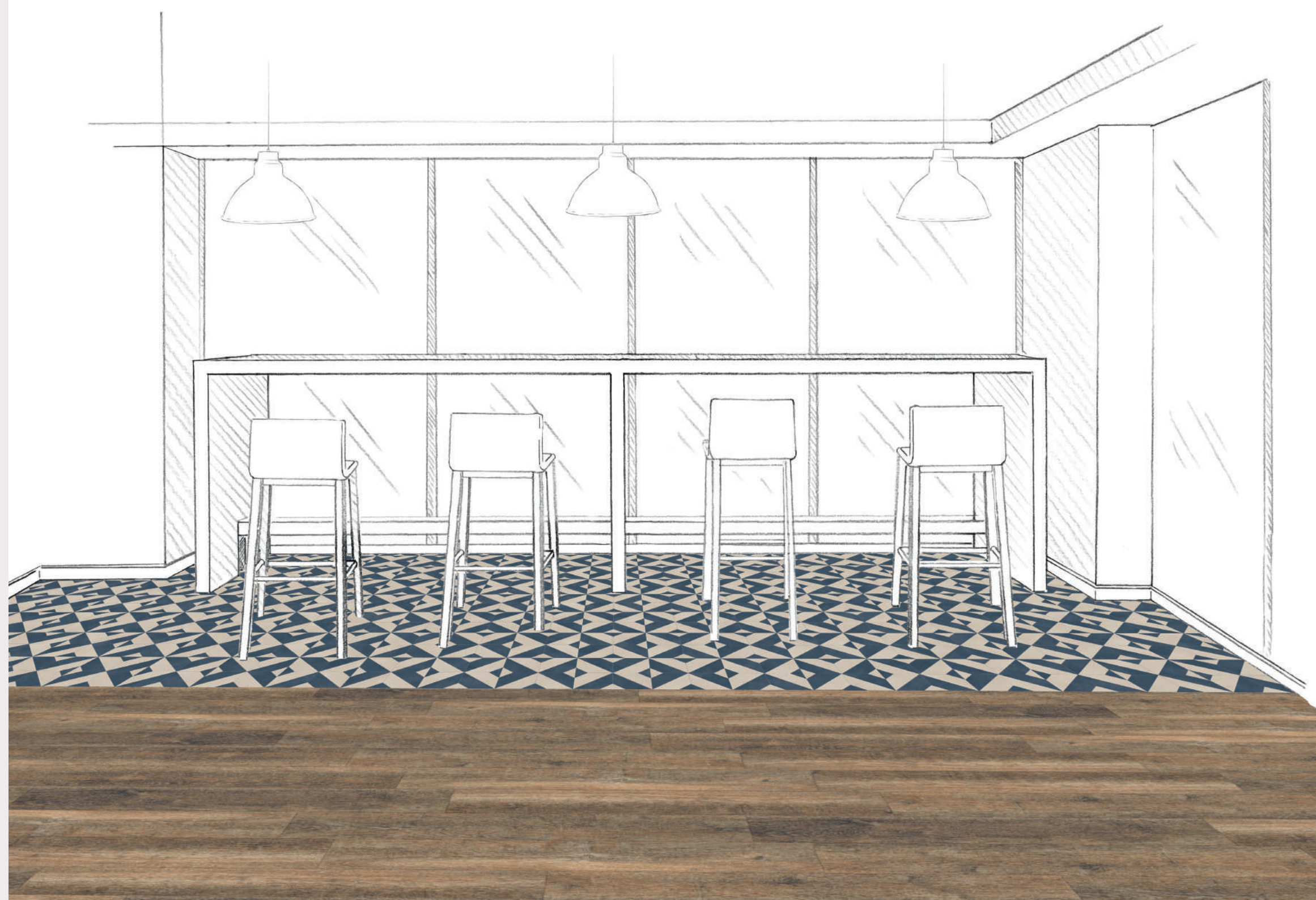
Creative & Flexible

Amtico Décor is perfect for introducing artisan, decorative detail to a space.

Bar skirts, boutique lobbies, elegant bathrooms, or anywhere that requires extra visual impact.

The pre-taped modules are quick and easy to lay, and when combined with one of our other 217 Signature products, will create a beautiful, durable floor for any commercial project.

For more inspiration go to [amtico.com](https://www.amtico.com)



Achieve this floor:

Feature area - Echo Ink DC455

Field - Aged Oak in Stripwood



Classic

From bold black and white to complementary colour combinations, Classic's kaleidoscope shapes create elegant floors with a modern take on an enduring pattern.

1

Pattern

5

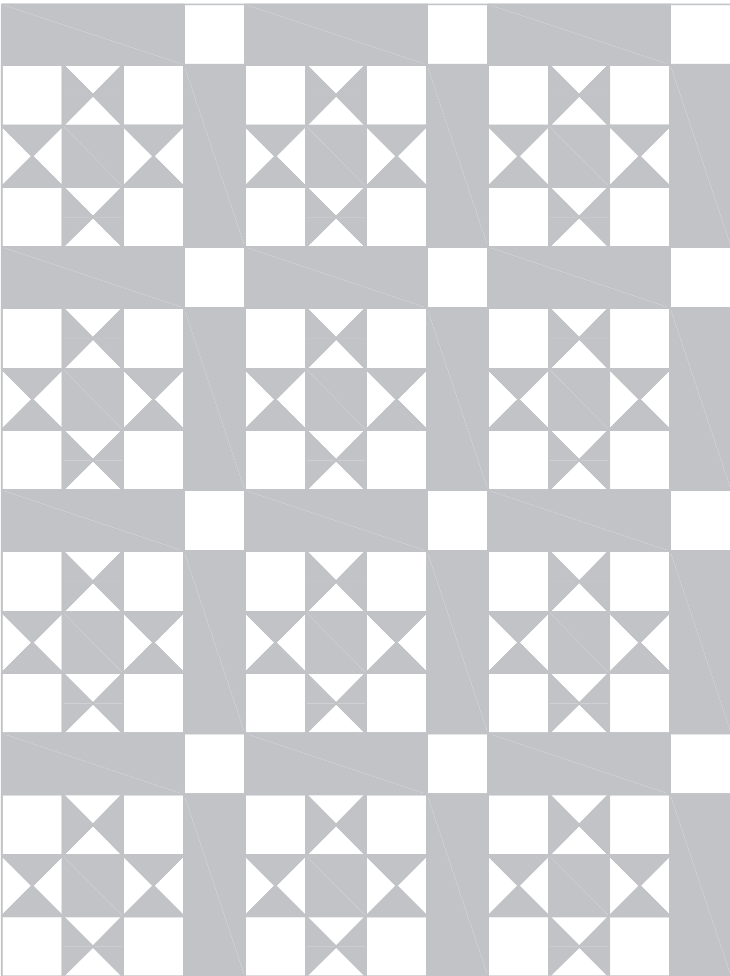
Colourways



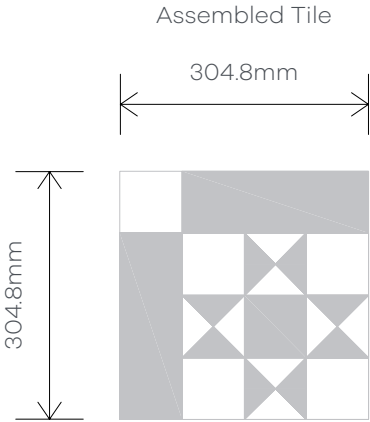
DC257 Mono | Rotterdam Oak - Stripwood

Classic Layout

Layout Illustration



One module equals one assembled tile
Module size: 304.8mm x 304.8mm supplied in taped modules
Each tile is individually cut and bevelled



Classic Mono DC257

This striking, monochromatic design makes a sophisticated statement in entrance and reception areas.



Shown above

Pure Plain White
Graphite Slate

Border

Bespoke Classic Mono
border (DC257B). Corner
pieces also available.

Perimeter

Graphite Slate in
304.8 x 457.2 mm
(12" x 18") tile

We've shown the bespoke Classic Mono border, but you can select any from the Signature collection to finish your floor. For the perimeter choose any Signature product in a size to suit your space.

Classic Ebony DC314

A variation of Classic Mono, with a higher proportion of Graphite Slate to Pure Plain White, for contemporary graphic impact.

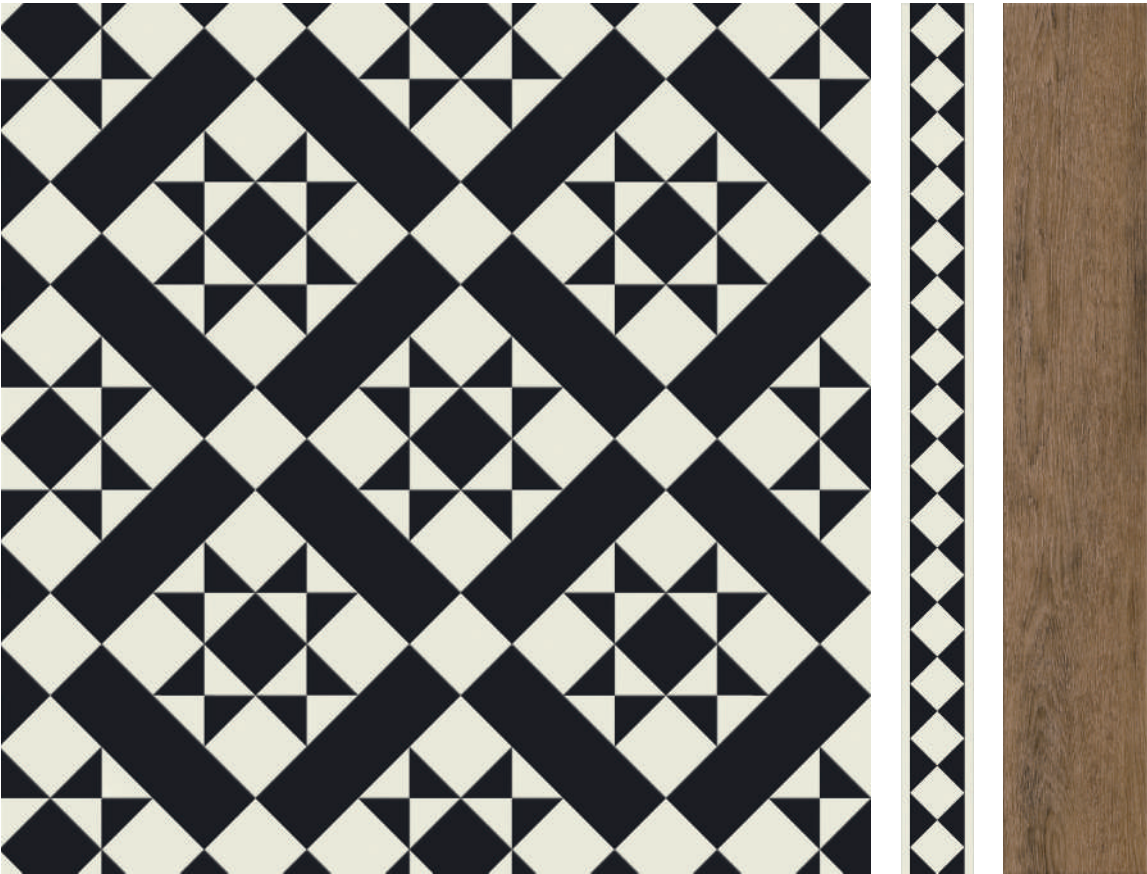


- Shown above**
Pure Plain White
Graphite Slate
- Border**
Standard offset Stripe border (AR0B700),
created with Pure Plain White and Graphite
Slate. Simply mitre corner on installation.
- Perimeter**
Graphite Slate in
304.8 x 457.2 mm
(12" x 18") tile

Select any border and corners from the Signature collection to finish your floor.
For the perimeter choose any Signature product in a size to suit your space.

Classic Moderna DC313

The ultimate black and white design for a bold, high contrast statement floor.

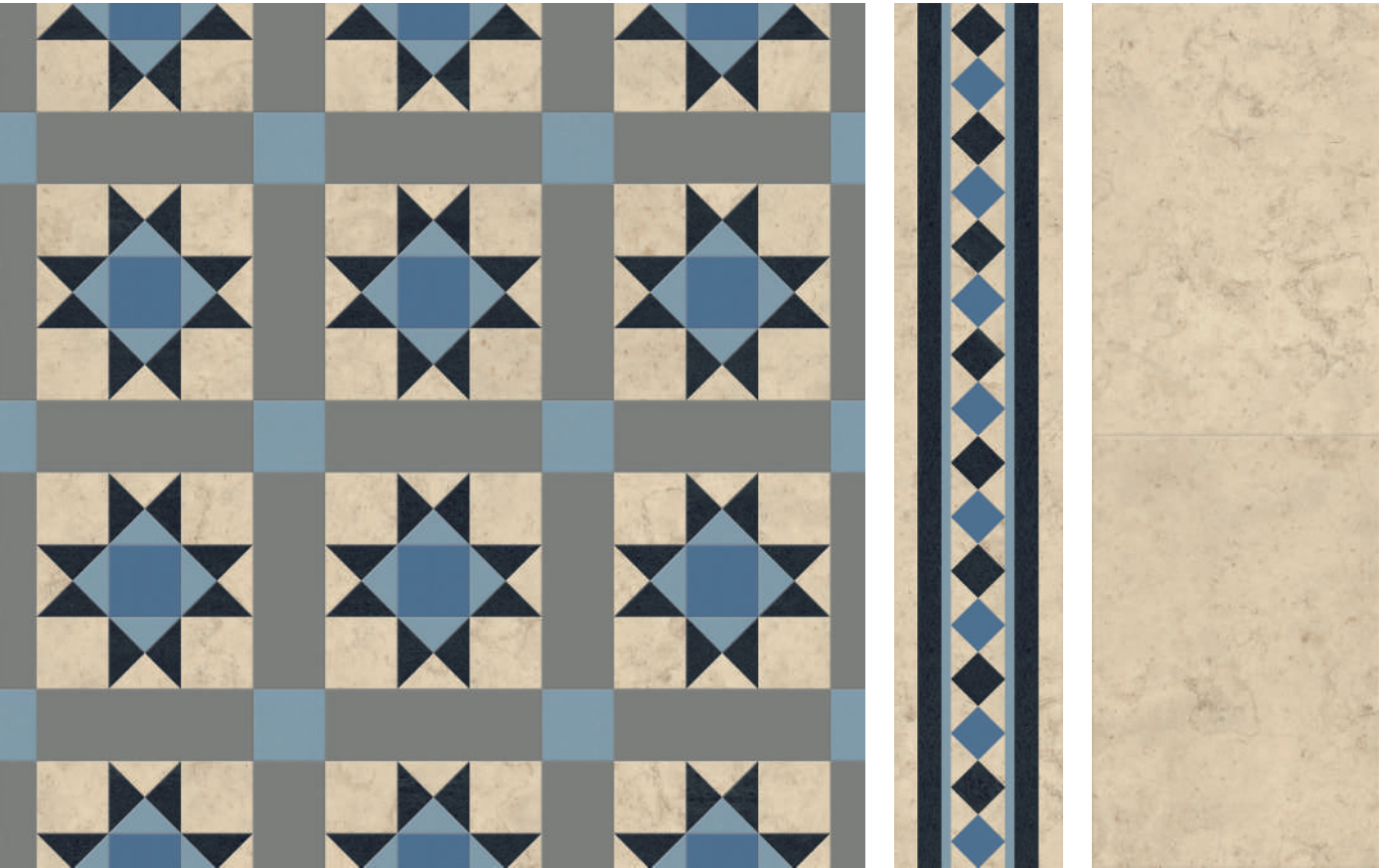


- Shown above**
Pure Plain White
Pure Plain Black
- Border**
Standard Bevelled Diamond border
(AR0B270B), created with Pure Plain White and
Pure Plain Black. Corner pieces also available.
- Perimeter**
Bordeaux Oak in
152.4 x 914.4 mm
(6" x 36") plank

Select any borders and corners from the Signature collection to finish your floor. For the
perimeter, why not try a complementary Signature wood in one of our five standard plank sizes?

Classic Azure DC258

Cool neutrals are brought to life with fresh blues, for a unique floor which works alone or with a complementary field.



Shown above
Mirabelle Creme,
Graphite Slate,
Sky, Blue & Grey

Border
Bespoke Classic Azure
border (DC258B). Corner
pieces also available.

Perimeter
Mirabelle Creme in
304.8 x 457.2 mm
(12" x 18") tile

We've shown the bespoke Classic Azure border, but you can select any from the Signature collection to finish your floor. For the perimeter choose any Signature product in a size to suit your space.

Classic Sepia DC259

Earthy tones are interrupted by bursts of blue, perfectly suited to a small cosy space or a standard feature in a traditional scheme.

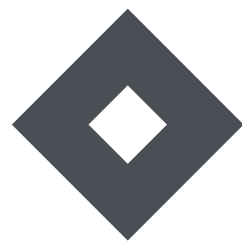


Shown above
Tan, Graphite Slate,
Mirabelle Creme,
Blue & Brown

Border
Bespoke Classic Sepia
border (DC259B). Corner
pieces also available.

Perimeter
Graphite Slate in
304.8 x 457.2 mm
(12" x 18") tile

We've shown the bespoke Classic Sepia border, but you can select any from the Signature collection to finish your floor. For the perimeter choose any Signature product in a size to suit your space.



Geo

Inspired by traditional tiled spaces of the Victorian era, Geo's geometric pattern makes a stylish impact in modest spaces or as a feature border.

1

Pattern

4

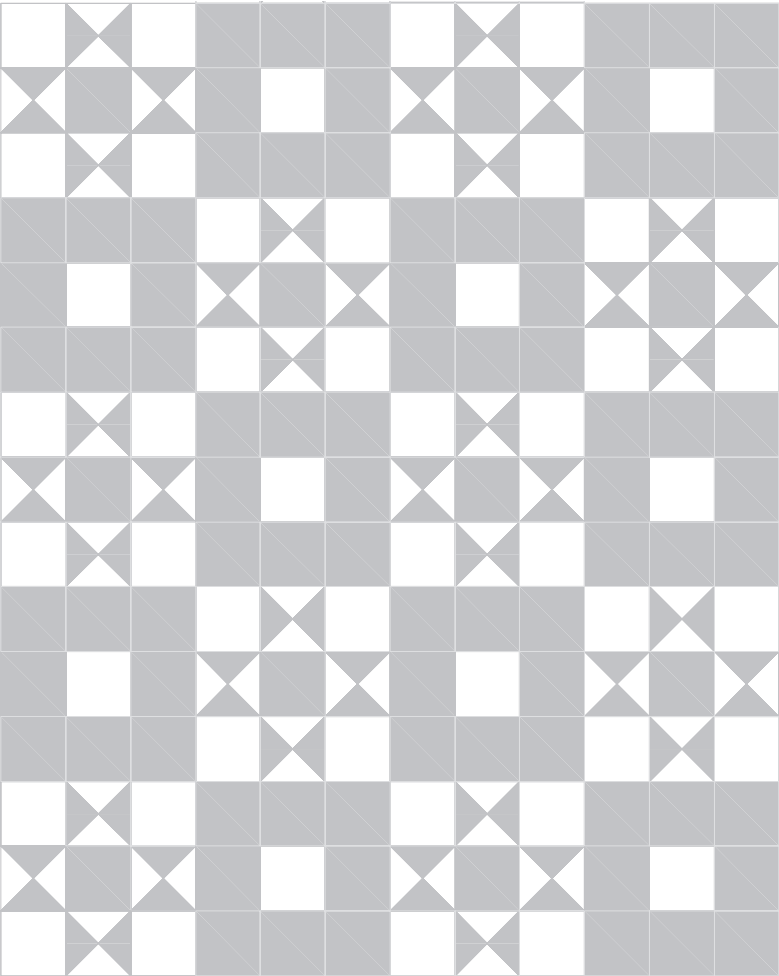
Colourways



DC260 Geo Oyster

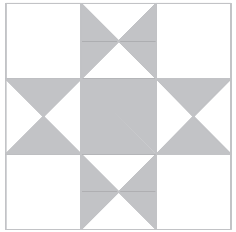
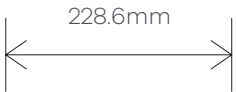
Geo Layout

Layout Illustration

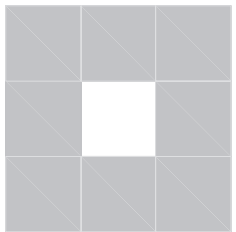
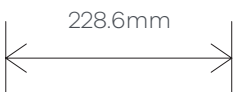


One module equals one assembled tile A and one assembled tile B
Module size: 228.6mm x 457.2mm supplied in taped modules
Each tile is individually cut and bevelled

Assembled Tile A



Assembled Tile B



Geo Ecrú DC261

Warm grey and cream tones create a soft, inviting take on this traditional tile design.



Shown above

Mirabelle Creme
Grey

Border

Bespoke Geo Ecrú
border (DC261B). Corner
pieces also available.

Perimeter

Mirabelle Creme in
304.8 x 457.2 mm
(12" x 18") tile

We've shown the bespoke Geo Ecrú border, but you can select any from the Signature collection to finish your floor. For the perimeter choose any Signature product in a size to suit your space.

Geo Graphite DC262

A palette of charcoal and grey puts an elegant spin on monochrome in this smart flooring.



- Shown above**
Graphite Slate Grey
- Border**
Bespoke Geo Graphite border (DC262B). Corner pieces also available.
- Perimeter**
Graphite Slate in 304.8 x 457.2 mm (12" x 18") tile

We've shown the bespoke Geo Graphite border, but you can select any from the Signature collection to finish your floor. For the perimeter choose any Signature product in a size to suit your space.

Geo Onyx DC315

Deep grey tones underpin the darkest version of Geo, created with a foundation of Graphite Slate, highlighted with Pure Plain White decorative shapes.



- Shown above**
Pure Plain White Graphite Slate
- Border**
Standard Offset Stripe border (AR0B700) created with Pure Plain White and Graphite Slate. Simply mitre corner on installation.
- Perimeter**
Graphite Slate in 304.8 x 457.2 mm (12" x 18") tile

Select any borders and corners from the Signature collection to finish your floor. For the perimeter choose any Signature product in a size to suit your space.

Geo Oyster DC260

A glint of silver adds a subtle gleam to this sophisticated scheme of contemporary neutrals.



Shown above Glint Orb Mink	Border Bespoke Geo Oyster border (DC260B). Simply mitre corner on installation.	Perimeter Glint Orb in 304.8 x 457.2 mm (12" x 18") tile
---	---	--

We've shown the bespoke Geo Oyster border, but you can select any from the Signature collection to finish your floor. For the perimeter choose any Signature product in a size to suit your space.



DC260 Geo Oyster



A simple combination of two colours creates a geometric, reflective design for intricate detailing in contemporary spaces.

1

Pattern

6

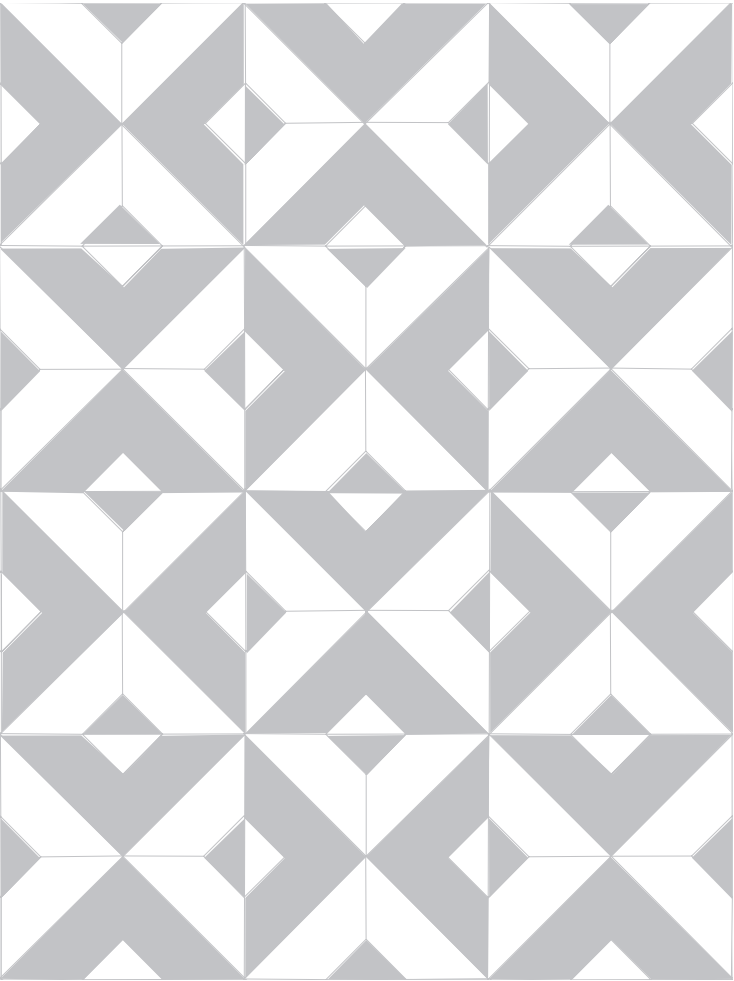
Colourways

DC456 Echo Keys

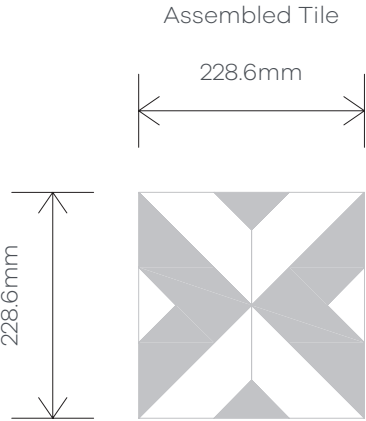


Echo Layout

Layout Illustration



One module equals one assembled tile
Module size: 228.6mm x 228.6mm supplied in taped modules
Each tile is individually cut and bevelled



Echo Ware DC458

Neutral earthy tones demonstrate how this graphic, symmetrical design can work in more traditional schemes.



Shown above
Stucco Clay
Stucco Quartz

Complementary product
When using Echo as decorative feature, you can unify the space by selecting a perimeter product from the pattern (Stucco Quartz 304.8 x 457.2 mm 12" x 18" tile.) Or, select any complementary Signature product in a size to suit your space.

Echo Keys DC456

Striking yet simple – contrast rich charcoal with fresh marble for a dramatic geometric statement.



Shown above
Graphite Slate
Marble

Complementary product
Graphite Slate in a 304.8 x 457.2 mm (12" x 18") tile makes a dramatic perimeter for Echo Keys, or select any complementary Signature product in a size to suit your space.

Echo Shadow DC457

The angular intricacy of Echo is obscured by blending two complementary greys for a soft, contemporary design.



Shown above
Modernist Lintel
Modernist Spire

Complementary product
For a more blended feel, the darker of the greys is shown as a perimeter product (Modernist Lintel 304.8 x 457.2 mm 12" x 18" tile). Or, select any complementary Signature product in a size to suit your space.

Echo Moss DC460

Evoking soothing feelings of nature, diffused grey-green stones add a subtle hint of colour to this reflective pattern.



Shown above
Stucco Sage
Modernist Atrium

Complementary product
Echo's more contemporary feel means it works equally well as a full floor or a decorative feature. If using in a small area, simply finish the edge with a single plank border (Cornish Oak in a 114.3 x 914.4 mm 4.5" x 36" plank).

Echo Harvest DC459

A neutral stone with an unexpected injection of cool yellow puts a unique, fresh spin on this decorative geometric design.



Shown above
Stucco Hay
Stucco Putty

Complementary product
We've selected a deep grey contrasting perimeter (Modernist Frame 304.8 x 457.2 mm 12" x 18" tile) but you can select any complementary Signature product in a size to suit your space.

Echo Ink DC455

Deep grey-blue paired with cream offers a sophisticated twist on more conventional black and white ceramics.



Shown above
Stucco Flax
Stucco Quartz

Complementary product
Echo's more contemporary feel means it works equally well as a full floor or a decorative feature. If using in a small area, simply finish the edge with a single plank border (Aged Oak in a 152.4 x 914.4 mm 6" x 36" plank).



DC455 Echo Ink | DC421 Halcyon Pleat Alder



Marble

Inspired by the luxury of marble, these stunning monochromatic patterns are evocative of historical British floor designs.

4

Patterns

1

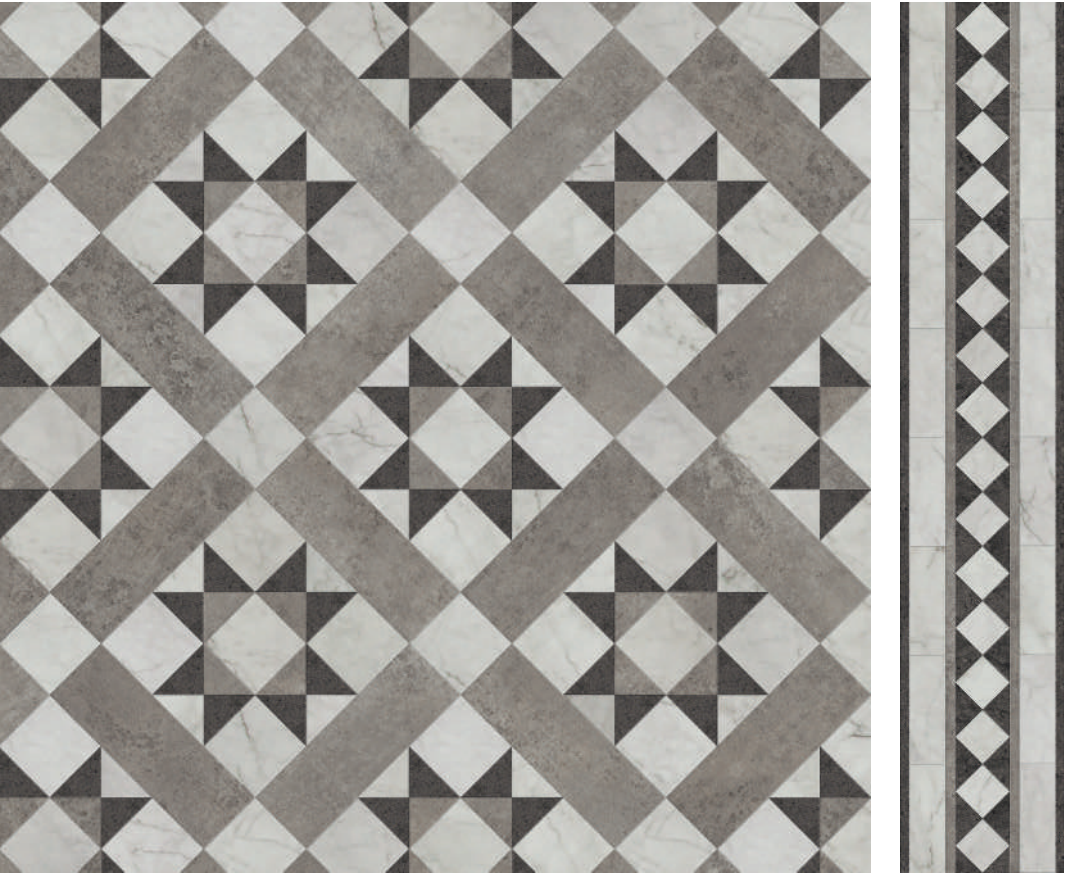
Colourway

DC295 Classic Bianco | DC298 Marble Parquet



Classic Argent DC294

Our striking design epitomises classic beauty when in this marble and metallic grey stone combination.



Shown above
Onyx Marble
Kura Caraway
Stria Volcanic

Border
Bespoke Classic Argent
border (DC296B). Corner
pieces also available.

We've shown the bespoke Classic Argent border, but you can select any from the Signature collection to finish your floor. And for an even more elegant feel, combine with either of our Marble laying patterns (P37 & 39) for your perimeter.

Marble Parquet DC298

Ripples of delicate grey and cool white tones flow across this Parquet pattern for subtle sophistication.



Shown above
Onyx Marble

Complementary product
Marble Parquet's elegant simplicity makes it equally at home as a full floor or as a perimeter for Classic Argent and Bianco.

Classic Bianco DC295

Intricate geometric details create elegant impact in monochromatic and marble colours.



Shown above
Onyx Marble
Kura Caraway
Stria Volcanic

Border
Bespoke Classic Bianco
border (DC296B). Corner
pieces also available.

We've shown the bespoke Classic Bianco border, but you can select any from the Signature collection to finish your floor. And for an even more elegant feel, combine with either of our Marble laying patterns (P37 & 39) for your perimeter.

Marble Linear Block DC297

A narrow tile combines with the elegance of our gently striped marble, defined by darker grey stripping for a contemporary block pattern.



Shown above
Onyx Marble
Stria Volcanic
Stripping

Complementary product
The strip in Marble Linear Block brings a more contemporary feel to our sophisticated Marble. Use as a full floor or as a perimeter for Classic Argent and Bianco.

Installation

Beautiful high-performance Décor floors feature a superior 1mm wear layer and Quantum Guard Elite urethane coating for exceptional durability. Individually cut and bevelled tiles are made to order in the UK by our highly skilled manufacturing team, arriving in pre-assembled and taped modules for quick and easy installation. For details on our technical specification, please visit amtico.com.

For best results, we recommend laying Décor in feature areas of 25m² or less. See the website for more information.



DC257 Classic Mono



Amtico UK & European Sales

Solar Park Southside
Solihull, West Midlands
B90 4SH, UK
+44 (0) 121 745 0800
samples@amtico.com

Amtico Head Office

Kingfield Road
Coventry
CV6 5AA, UK
+44 (0) 24 7686 1400
samples@amtico.com

Amtico International Germany

Im Taubental 11
41468 Neuss, Germany
+49 (0) 2131 359 16 0
info@amtico.de

Amtico International France

36 Avenue Hoche
75008 Paris, France
+33 (0) 1 55 38 95 70
info@amtico.fr

Amtico International Scandinavia

Isafjordsgatan 22
164 40 Kista, Sweden
+46 (0) 8 584 233 24
info@amtico.se

Amtico International HK Ltd

Rm 2003
20/F OfficePlus @ Wan Chai
303 Hennessy Rd, Hong Kong
+852 2327 7703
samples@amtico.com

Amtico International Middle East, Africa & India

8th Floor
Building Number 2
J&G DMCC, Dubai, UAE
+971 (0) 50 192 33 46
samples@amtico.com

Amtico International Australia & New Zealand

PO Box 752
Jimboomba
QLD 4280, Australia
+61 (0) 477708418
australia.orders@amtico.com

Visit amtico.com for more information on our product range, inspiring ideas, maintenance and installation advice. Every effort is made to achieve accurate reproduction of products in this brochure, however printing limitations can be misleading. Selection of products should be made from actual sample. Samples are small pieces cut from standard tiles. They give only a general indication of the design. Tone and shading can vary slightly from batch to batch and it is not possible to guarantee that the sample will exactly match the material supplied. The policy of the Company is one of continuous development and improvement and the right is reserved to add or delete from the range or change patterns without prior notification. All metric sizes are rounded. All products are manufactured in line with EN ISO 10582 and EN1307. Brochure correct at the time of printing.

amtico
flooring