

## REXMAT 10 brushes

### Recommended for...

#### light LEVEL OF TRANSIT

- personal dwellings
- small shops

#### TRAFFIC

- pedestrian
- wheel chairs

#### AREA

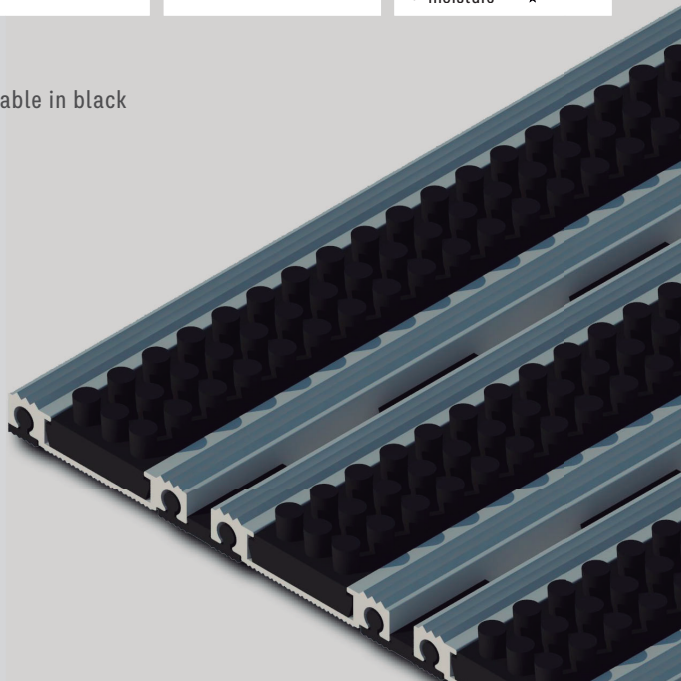
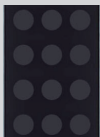
- outdoor roofed
- outdoor

#### TYPE OF DIRT

- coarse ★★★★★
- fine ★★★
- moisture ★

Brush upper infill is only available in black

### Brushes colours

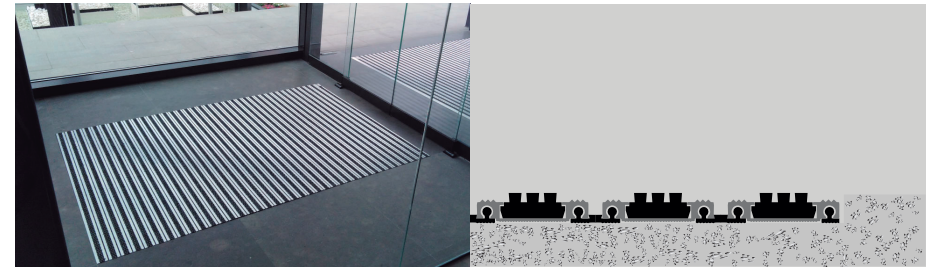


rexmat

## Highlights ( I )

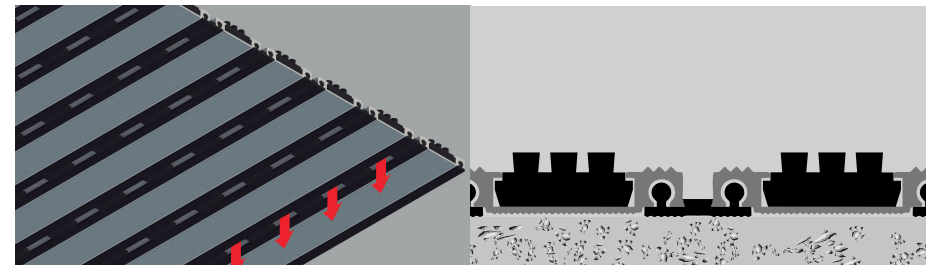


A good entrance mat must retain as much dirt as possible from footwear, without becoming saturated in the short term with dust or moisture. REXMAT is an entrance mat that is composed of aluminium profiles in which a cleaning element has been inserted. Its principle of action is as follows: dust particles, small stones, and moisture are detached from the footwear, and get deposited between the profiles of the mat. In this way they are trapped, so that the next visitor will not drag them inside. Every so often it will suffice to simply roll up the mat and remove the captured dirt accumulated in the matwell in which it is housed.



REXMAT is supplied completely finished and does not require any type of installation or adjustment, it only has to be housed in its matwell ( recessed ), in this way

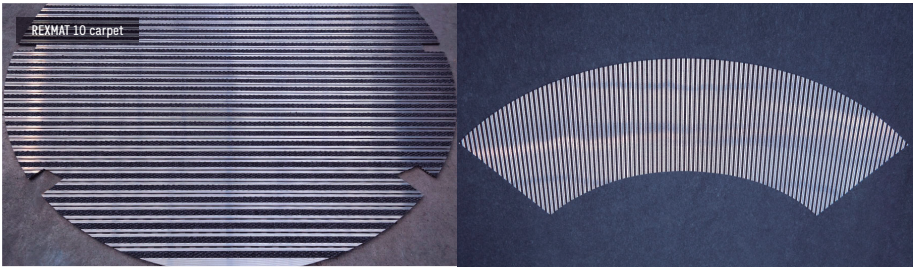
- dirt accumulated between profiles since last cleaning can be easily removed, matwell acts as a collector tank
- matwell keeps the mat still, otherwise it would be moved by footfall
- matwell ensures that mat surface is flush with the surrounding floor, this prevents people from tripping



Its main feature is that aluminium profiles are joined together by a high strength PVC joint allowing the mat to be rolled up in order to make its handling easier or to perform periodic removal of the dirt. Moreover, it is perforated, to allow dirt and moisture to pass through. Preventing metallic noises from coming up when being stepped on is a must for every mat of its kind. PVC joint not only acts as a profile connection system but also performs the function of acoustic isolation system, which reduces manufacture costs by "killing two birds with one stone".

rexmat

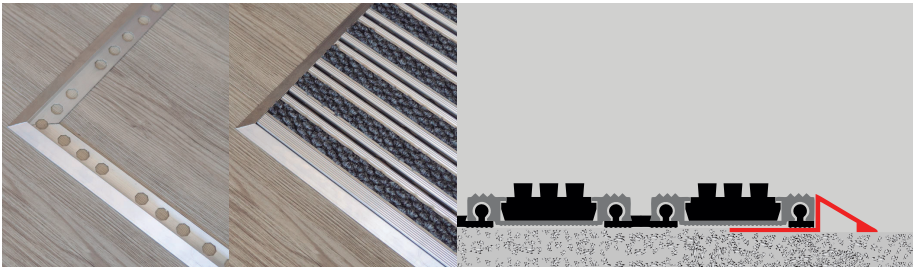
# Highlights ( II )



We have all the necessary cutting machinery for the manufacture of mats of any size and shape, however complex they may be

For the manufacture of any mat with a non-rectangular shape there are two alternatives:

- from a blueprint made by a CAD / CAM programme
- by means of a template taken in situ, cutting a rigid material ( for example, a piece of PVC flooring, or carpet ) in the shape of the matwell



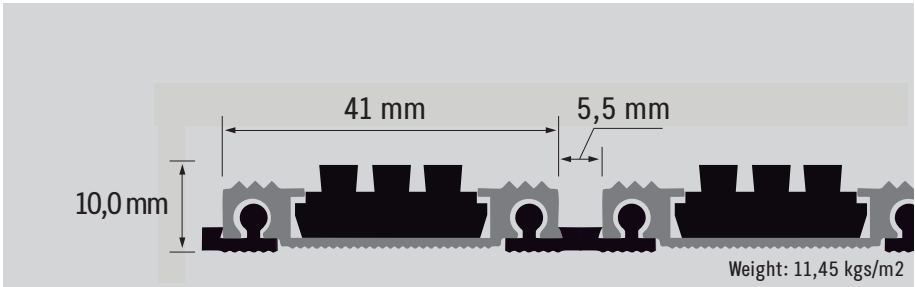
Aluminium ramp profile for creating a matwell over the floor, valid exclusively for 10 mm high doormats, useful for those cases where there is no matwell in which to accommodate the doormat

- Available in 2.5 metre strips. It is supplied in its original format, or in sections already mitred and ready to be fixed to the ground
- It doesn't come assembled to the mat
- Self-adhesive, to be easily fixed to the floor ( can also be fixed with screws )

# Position of the model in the range

LEVEL OF TRANSIT	AREA	OUTDOORS	ROOFED OUTDOORS	INDOOR
EXTREME		EXPERT 27 rubber	EXPERT 27 rubber	
	Typical uses:		EXPERT 27 carpet	EXPERT 27 carpet
	• airports, train stations	EXPERT 27 brushes	EXPERT 27 brushes	
	• shopping centres	HERCULES 27 rubber	HERCULES 27 rubber	
	• hospitals		HERCULES 27 carpet	HERCULES 22 carpet
		HERCULES 27 brushes	HERCULES 27 brushes	
INTENSE		REXMAT 22 rubber	REXMAT 22 rubber	
	Typical uses:		REXMAT 22 carpet	REXMAT 22 carpet
	• large companies	REXMAT 22 brushes	REXMAT 22 brushes	
	• supermarkets	EXPERT 22 rubber	EXPERT 22 rubber	
	• office buildings		EXPERT 22 carpet	EXPERT 22 carpet
		EXPERT 22 brushes	EXPERT 22 brushes	
HIGH		REXMAT 17 rubber	REXMAT 17 rubber	
	Typical uses:		REXMAT 17 carpet	REXMAT 17 carpet
	• medium-sized companies	REXMAT 17 brushes	REXMAT 17 brushes	
	• supermarkets	EXPERT 17 rubber	EXPERT 17 rubber	
			EXPERT 17 carpet	EXPERT 17 carpet
		EXPERT 17 brushes	EXPERT 17 brushes	
MEDIUM		REXMAT 13 rubber	REXMAT 13 rubber	
	Typical uses:		REXMAT 13 carpet	REXMAT 13 carpet
	• small businesses	REXMAT 13 brushes	REXMAT 13 brushes	
	• neighbourhood communities			
LIGHT		REXMAT 10 rubber	REXMAT 10 rubber	
	Typical uses:		REXMAT 10 carpet	REXMAT 10 carpet
	• personal dwellings	REXMAT 10 brushes	REXMAT 10 brushes	
	• small shops			

# Technical specifications



## Aluminium profile



Composition: 6063 aluminium alloy with T.5 treatment  
Weight: 281 grammes / linear meter

## Joint between profiles



Composition: Plasticised PVC of SHORE A95 hardness  
Weight: 80 grammes / linear meter  
Drainage perforations: 6x22 mm  
Distance between perforations: 22mm

## Brush upper insert



Base composition: Polypropylene  
Brushes composition: Polyamide 6  
Weight: 150 grammes / linear meter