

## REXMAT 13 carpet

### Recommended for...

#### medium LEVEL OF TRANSIT

- small businesses
- neighbourhood communities

#### TRAFFIC

- pedestrian
- wheel chairs

#### AREA

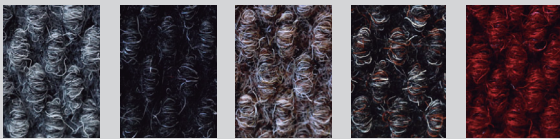
- outdoor roofed
- indoor

#### TYPE OF DIRT

- coarse ★★★
- fine ★★★★★
- moisture ★★★★★

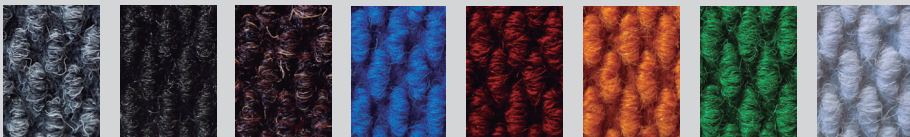
Two versions of carpet inserts are available: standard and “heavy duty” whose thickness is 1.8 mm greater than the standard model, which therefore significantly increases its durability

### Standard carpet colour range



grey anthracite beige tobacco red

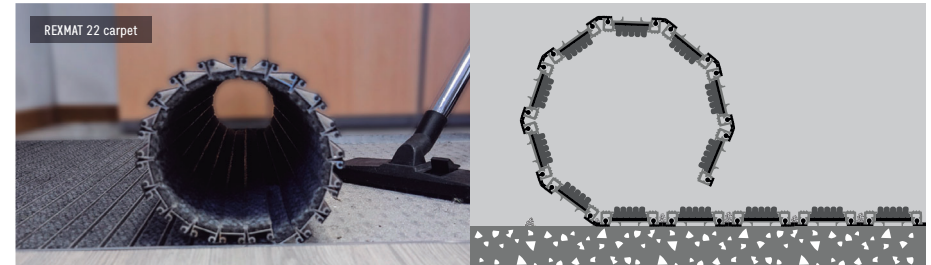
### “Heavy duty” carpet colour range



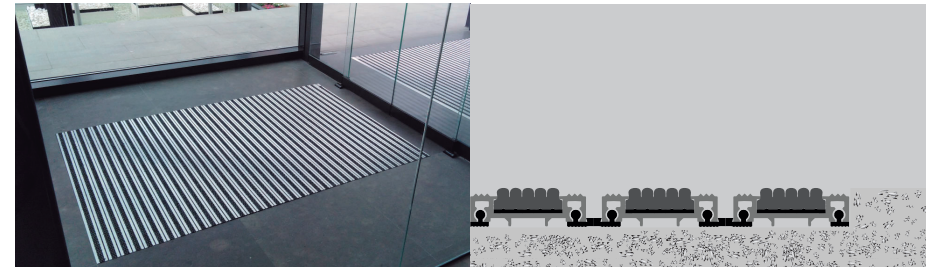
grey black brown blue red yellow green white

rexmat

## Highlights

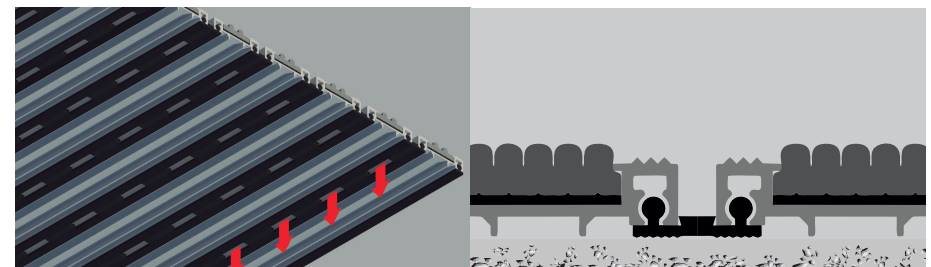


A good entrance mat must retain as much dirt as possible from footwear, without becoming saturated in the short term with dust or moisture. REXMAT is an entrance mat that is composed of aluminium profiles in which a cleaning element has been inserted. Its principle of action is as follows: dust particles, small stones, and moisture are detached from the footwear, and get deposited between the profiles of the mat. In this way they are trapped, so that the next visitor will not drag them inside. Every so often it will suffice to simply roll up the mat and remove the captured dirt accumulated in the matwell in which it is housed



REXMAT is supplied completely finished and does not require any type of installation or adjustment, it only has to be housed in its matwell (recessed), in this way

- dirt accumulated between profiles since last cleaning can be easily removed, matwell acts as a collector tank
- matwell keeps the mat still, otherwise it would be moved by footfall
- matwell ensures that mat surface is flush with the surrounding floor, this prevents people from tripping



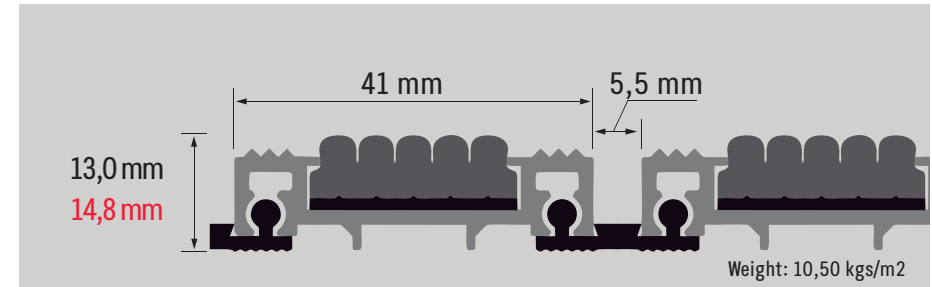
Its main feature is that aluminium profiles are joined together by a high strength PVC joint allowing the mat to be rolled up in order to make its handling easier or to perform periodic removal of the dirt. Moreover, it is perforated, to allow dirt and moisture to pass through. Preventing metallic noises from coming up when being stepped on is a must for every mat of its kind. PVC joint not only acts as a profile connection system but also performs the function of acoustic isolation system, which reduces manufacture costs by “killing two birds with one stone”

rexmat

# Position of the model in the range

LEVEL OF TRANSIT	AREA	OUTDOORS	ROOFED OUTDOORS	INDOOR
EXTREME Typical uses: • airports, train stations • shopping centres • hospitals		EXPERT 27 rubber	EXPERT 27 rubber EXPERT 27 carpet	EXPERT 27 carpet
		EXPERT 27 brushes	EXPERT 27 brushes	
		HERCULES 27 rubber	HERCULES 27 rubber HERCULES 27 carpet	HERCULES 22 carpet
		HERCULES 27 brushes	HERCULES 27 brushes	
INTENSE Typical uses: • large companies • supermarkets • office buildings		REXMAT 22 rubber	REXMAT 22 rubber REXMAT 22 carpet	REXMAT 22 carpet
		REXMAT 22 brushes	REXMAT 22 brushes	
		EXPERT 22 rubber	EXPERT 22 rubber EXPERT 22 carpet	EXPERT 22 carpet
		EXPERT 22 brushes	EXPERT 22 brushes	
HIGH Typical uses: • medium-sized companies • supermarkets		REXMAT 17 rubber	REXMAT 17 rubber REXMAT 17 carpet	REXMAT 17 carpet
		REXMAT 17 brushes	REXMAT 17 brushes	
		EXPERT 17 rubber	EXPERT 17 rubber EXPERT 17 carpet	EXPERT 17 carpet
		EXPERT 17 brushes	EXPERT 17 brushes	
MEDIUM Typical uses: • small businesses • neighbourhood communities		REXMAT 13 rubber	REXMAT 13 rubber <b>REXMAT 13 carpet</b>	<b>REXMAT 13 carpet</b>
		REXMAT 13 brushes	REXMAT 13 brushes	
LIGHT Typical uses: • personal dwellings • small shops		REXMAT 10 rubber	REXMAT 10 rubber REXMAT 10 carpet	REXMAT 10 carpet
		REXMAT 10 brushes	REXMAT 10 brushes	

# Technical specifications



## Aluminium profile



Composition: 6063 aluminium alloy with T5 treatment  
Weight: 354 grammes / linear meter

## Joint between profiles

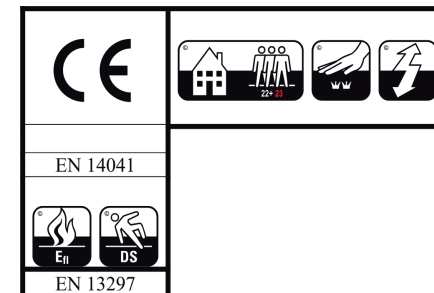


Composition: Plasticised PVC of SHORE A95 hardness  
Weight: 80 grammes / linear meter  
Drainage perforations: 6x22 mm  
Distance between perforations: 22mm

## Carpet upper insert



Manufacturing process: "Needled pile floorcovering" ISO 2424  
Surface aspect: Looped  
Pile yarn composition: 100 % PP ( polypropylene )  
Backing: "Waffle" ISO 2424  
Pile weight: 1150 gr / m<sup>2</sup>  
1750 gr / m<sup>2</sup>  
Total weight: 2170 gr / m<sup>2</sup> (+/- 7,5 %)  
2780 gr / m<sup>2</sup> (+/- 7,5 %)  
ISO 8543  
ISO 8543  
Pile height: 3,6 mm (< 7: +/- 0,5 % / >= 7: +/- 7,5 %)  
5,5 mm (+/- 0,5 %)  
Total height: 9,2 mm (< 7: +/- 0,5 % / >= 7: +/- 7,5 %)  
11 mm (+/- 0,5 %)  
ISO 1766  
ISO 1766



(\*) Versión "heavy duty"