

REXMAT 17 rubber

Recommended for...

high LEVEL OF TRANSIT

- medium-sized companies
- supermarkets

TRAFFIC

- pedestrian
- wheel chairs

AREA

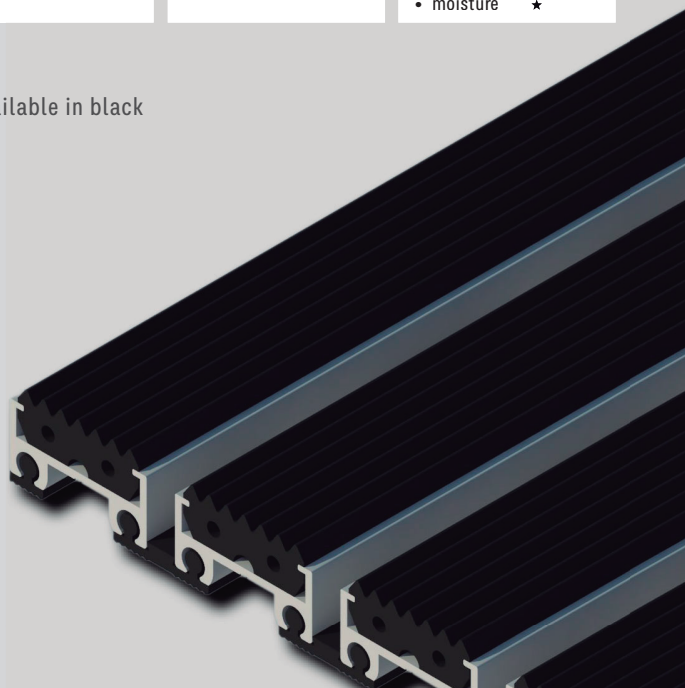
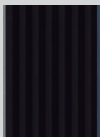
- outdoor roofed
- outdoor

TYPE OF DIRT

- coarse ★★★★★
- fine ★★
- moisture ★

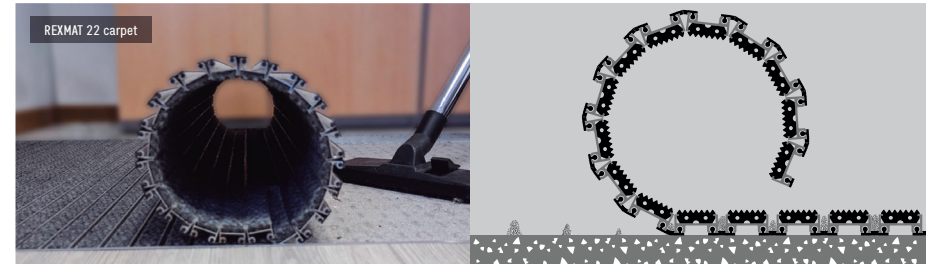
Rubber upper infill is only available in black

Rubber colours

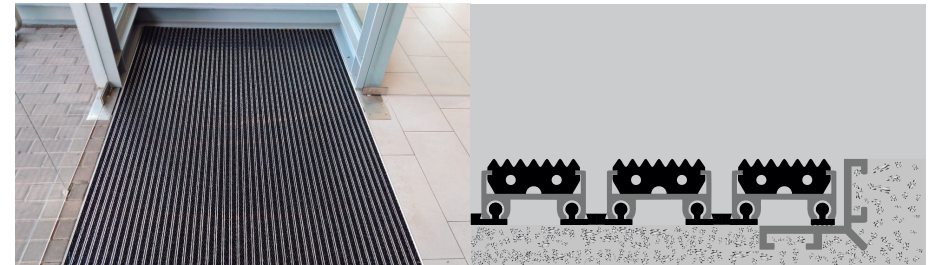


rexmat

Highlights (I)

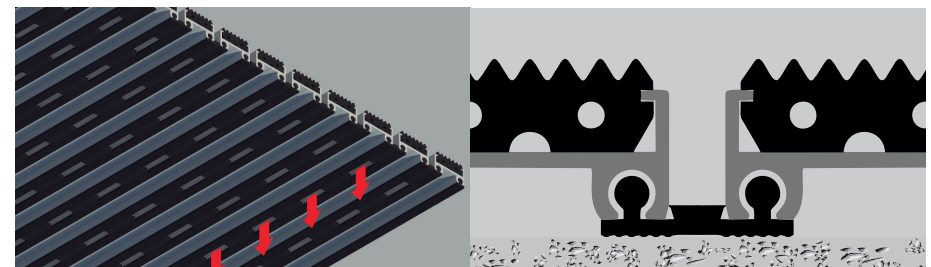


A good entrance mat must retain as much dirt as possible from footwear, without becoming saturated in the short term with dust or moisture. REXMAT is an entrance mat that is composed of aluminium profiles in which a cleaning element has been inserted. Its principle of action is as follows: dust particles, small stones, and moisture are detached from the footwear, and get deposited between the profiles of the mat. In this way they are trapped, so that the next visitor will not drag them inside. Every so often it will suffice to simply roll up the mat and remove the captured dirt accumulated in the matwell in which it is housed.



REXMAT is supplied completely finished and does not require any type of installation or adjustment, it only has to be housed in its matwell (recessed), in this way

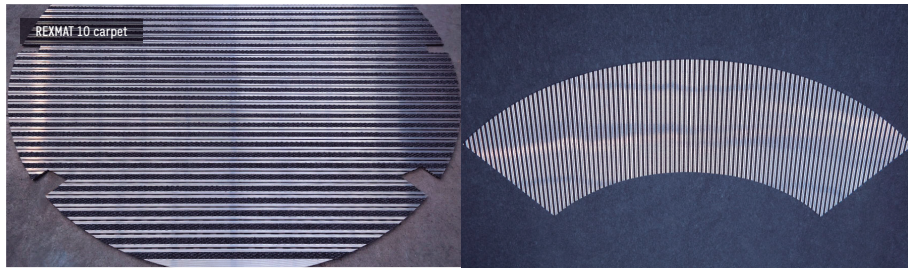
- dirt accumulated between profiles since last cleaning can be easily removed, matwell acts as a collector tank
- matwell keeps the mat still, otherwise it would be moved by footfall
- matwell ensures that mat surface is flush with the surrounding floor, this prevents people from tripping



Its main feature is that aluminium profiles are joined together by a high strength PVC joint allowing the mat to be rolled up in order to make its handling easier or to perform periodic removal of the dirt. Moreover, it is perforated, to allow dirt and moisture to pass through. Preventing metallic noises from coming up when being stepped on is a must for every mat of its kind. PVC joint not only acts as a profile connection system but also performs the function of acoustic isolation system, which reduces manufacture costs by "killing two birds with one stone"

rexmat

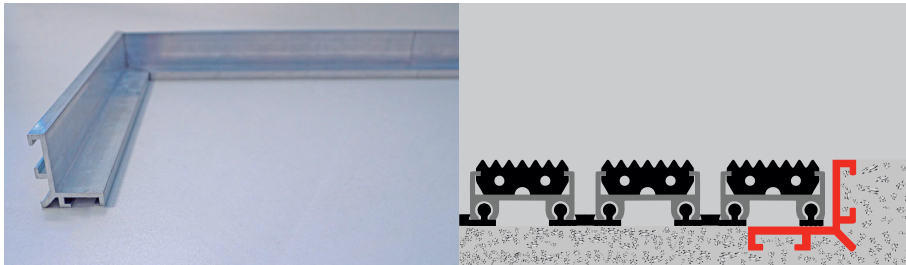
Highlights (II)



We have all the necessary cutting machinery for the manufacture of mats of any size and shape, however complex they may be

For the manufacture of any mat with a non-rectangular shape there are two alternatives:

1. from a blueprint made by a CAD / CAM programme
2. by means of a template taken in situ, cutting a rigid material (for example, a piece of PVC flooring, or carpet) in the shape of the matwell



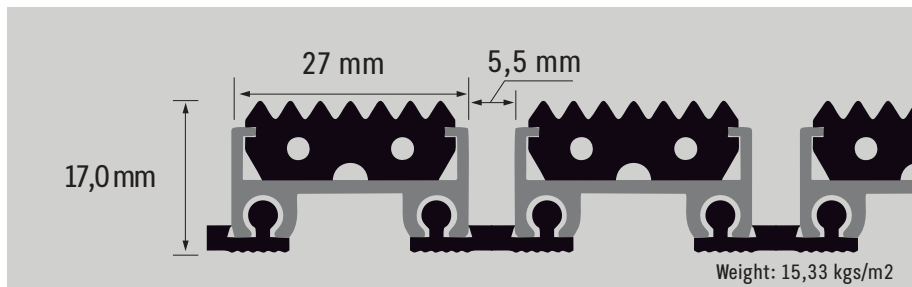
Aluminium L-shaped profile for construction of built-in matwell frame. It is optional, its placement is not essential

- It is reversible (unequal sides), in one position it is valid for REXMAT 17, and in the other it is valid for REXMAT 22
- Available in 3-metre strips. It is supplied in its original format, or in already mitred sections, completely finished, and with the necessary connecting pieces (corner joint or straight joint). In this way, at the installation point it will only be necessary to join the sections and to tighten the Allen screws that are built into the connecting pieces
- Designed to be grouted with mortar

Position of the model in the range

LEVEL OF TRANSIT	AREA	OUTDOORS	ROOFED OUTDOORS	INDOOR
EXTREME Typical uses: • airports, train stations • shopping centres • hospitals		EXPERT 27 rubber	EXPERT 27 rubber EXPERT 27 carpet EXPERT 27 brushes	EXPERT 27 carpet
		EXPERT 27 brushes		
		HERCULES 27 rubber	HERCULES 27 rubber HERCULES 27 carpet	HERCULES 22 carpet
		HERCULES 27 brushes	HERCULES 27 brushes	
INTENSE Typical uses: • large companies • supermarkets • office buildings		REXMAT 22 rubber	REXMAT 22 rubber REXMAT 22 carpet REXMAT 22 brushes	REXMAT 22 carpet
		REXMAT 22 brushes		
		EXPERT 22 rubber	EXPERT 22 rubber EXPERT 22 carpet	EXPERT 22 carpet
		EXPERT 22 brushes	EXPERT 22 brushes	
HIGH Typical uses: • medium-sized companies • supermarkets		REXMAT 17 rubber	REXMAT 17 rubber REXMAT 17 carpet REXMAT 17 brushes	REXMAT 17 carpet
		REXMAT 17 brushes		
		EXPERT 17 rubber	EXPERT 17 rubber EXPERT 17 carpet	EXPERT 17 carpet
		EXPERT 17 brushes	EXPERT 17 brushes	
MEDIUM Typical uses: • small businesses • neighbourhood communities		REXMAT 13 rubber	REXMAT 13 rubber REXMAT 13 carpet REXMAT 13 brushes	REXMAT 13 carpet
		REXMAT 13 brushes		
LIGHT Typical uses: • personal dwellings • small shops		REXMAT 10 rubber	REXMAT 10 rubber REXMAT 10 carpet REXMAT 10 brushes	REXMAT 10 carpet
		REXMAT 10 brushes		

Technical specifications



Aluminium profile



Composition: 6063 aluminium alloy with T.5 treatment

Weight: 281 grammes / linear meter

Joint between profiles



Composition: Plasticised PVC of SHORE A95 hardness

Weight: 80 grammes / linear meter

Drainage perforations: 6x22 mm
Distance between perforations: 22mm



Rubber upper insert



Composition: Thermoplastic rubber

Weight: 150 grammes / linear meter