



# Aluminium entrance matting

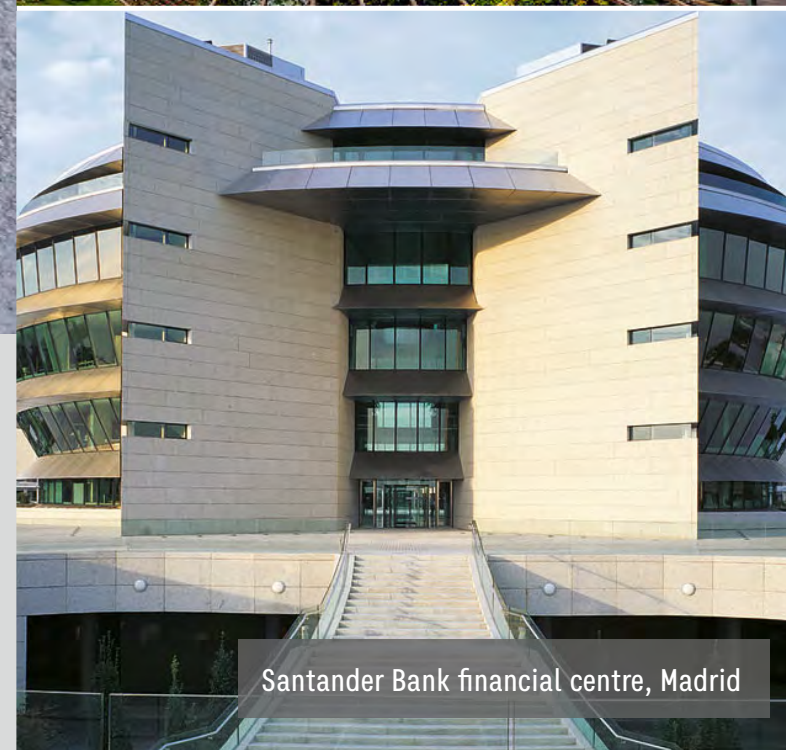
## Product guide



Certified by  
**Applus<sup>+</sup>**  
laboratories



REPSOL head offices, Madrid



Santander Bank financial centre, Madrid



TELEFONICA head offices, Madrid



HUCA hospital, Oviedo



Charles de Gaulle airport, Paris



Customers that has relied on REXMAT

- TELEFONICA head offices ( Madrid )  
REPSOL head offices ( Madrid )  
BANCO POPULAR head offices ( Madrid )  
SANTANDER BANK financial centre ( Madrid )
- Charles de Gaulle airport Paris ( France )  
Zaragoza airport  
Malaga airport  
Barcelona cruise-ship terminal  
Algeciras port terminal
- HUCA hospital ( Oviedo )  
Vigo hospital  
Cerdanya hospital ( Lleida )  
Segovia hospital  
Mar Menor hospital ( Murcia )  
Cazorla hospital ( Jaen )
- National Archaeological museum ( Madrid )  
Caixaforum Seville  
Pontevedra museum  
Municipal library ( Madrid )
- Badalona Basketball city shopping centre ( Barcelona )  
Isla Azul shopping centre ( Madrid )  
Tres Aguas shopping centre ( Madrid )  
ABC Serrano shopping centre ( Madrid )  
Carrefour ( Huelva )  
Carrefour San Fernando de Henares ( Madrid )  
Alcampo Colmenar Viejo ( Madrid )
- SEAT dealership network  
ABANCA office network  
Thyssen Krupp airport systems fingers  
Cardenal Marcelo Spinola office complex ( Madrid )  
EBROSA Building San Chinarro ( Madrid )  
CIS Ibermutuamur ( Oviedo )

Countries where REXMAT is in use

- EuropeAmerica
- FranceU.S.A
- ItalyMexico
- Portugal
- Spain

rexmat®

Contents

Principle of action	6
REXMAT at a glance	8
EXPERT at a glance	10
Advantages of EXPERT	12
EXPERT Hercules	14
Types of upper inserts	16
Colours	18
Choosing profile height and type of upper insert	20
Reproduction of designs	22
Special shapes	24
Accessories	26



## Principle of action

### Why REXMAT

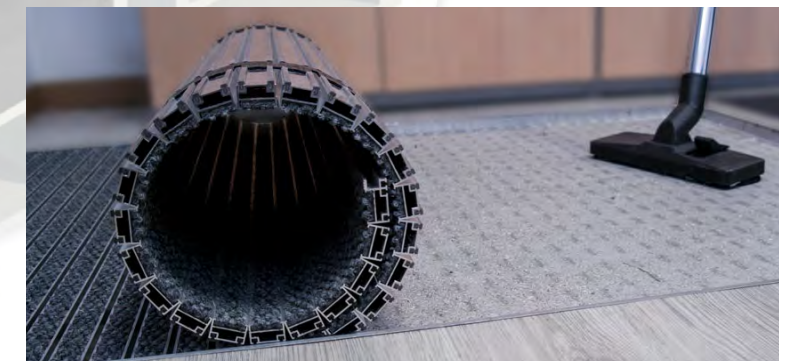
Every mat at the entrance of a building, premises, or home, is an anti-dirt barrier that saves significant time and expense on cleaning in exchange for a minimum investment

It is a fact that proper design of entrance matting areas significantly REDUCES:

- cleaning costs, which not only saves a lot of money, but also helps to protect the environment
- wear and tear of the floors inside the building caused by small stones, salts, or any scraping or scratching element
- the risk of accidental slips caused by moisture or debris on the floor

A good entrance mat must retain as much dirt as possible from footwear, without becoming saturated in the short term with dust or moisture. REXMAT is an entrance mat that is composed of aluminium profiles in which a cleaning element has been inserted, and whose principle of action is as follows: dust particles, small stones, and moisture are detached from the footwear, and get deposited between the profiles of the mat. In this way they are trapped, so that the next visitor will not drag them inside

Every so often it will suffice to simply roll up the mat and remove the captured dirt accumulated in the matwell in which it is housed



REXMAT is supplied completely finished and does not require any type of installation or adjustment, it only has to be housed in its matwell ( recessed ), in this way

- dirt accumulated between profiles since last cleaning can be easily removed, matwell acts as a collector tank
- matwell keeps the mat still, otherwise it would be moved by footfall
- matwell ensures that mat surface is flush with the surrounding floor, this prevents people from tripping





22

**REXMAT 22**  
Suitable for a intense level of transit  
• large companies  
• supermarkets  
• office buildings, etc...

17

**REXMAT 17**  
Suitable for a high level of transit  
• medium-sized companies  
• supermarkets, etc...

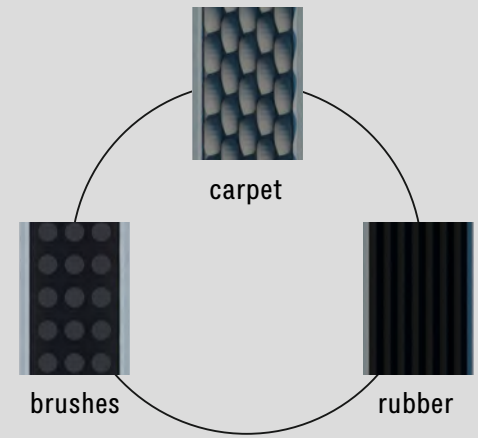
13

**REXMAT 13**  
Suitable for a medium level of transit  
• small businesses  
• neighbourhood communities, etc...

10

**REXMAT 10**  
Suitable for a light level of transit  
• personal dwellings  
• small shops, etc...

3 types of upper insert



# REXMAT at a glance

## Smart design

4

Entry level model, available in four different profile heights, what makes it possible to satisfy any need in terms of footfall level



Its main feature is that aluminium profiles are joined together by a high strength PVC joint, which is perforated, to allow dirt and moisture to pass through



For every manufacturer of this kind of entrance mats preventing metallic noises from coming up when being stepped on is a must. PVC joint not only acts as a profile connection system but also performs the function of acoustic isolation system, which reduces manufacture costs by “killing two birds with one stone”



Its remarkable quality/price ratio due to its smart design becomes REXMAT a best seller in its class



Proven resistance and longevity after over ten years on the market



Exclusively suitable for pedestrian footfall and wheel chairs

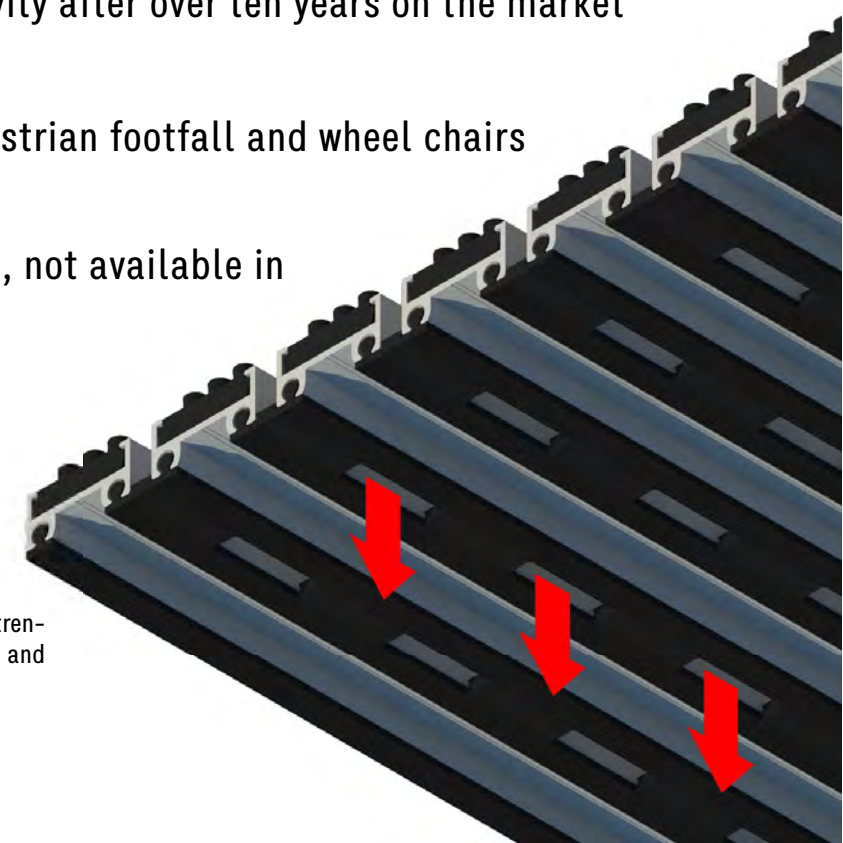


Manufactured under demand, not available in standard sizes

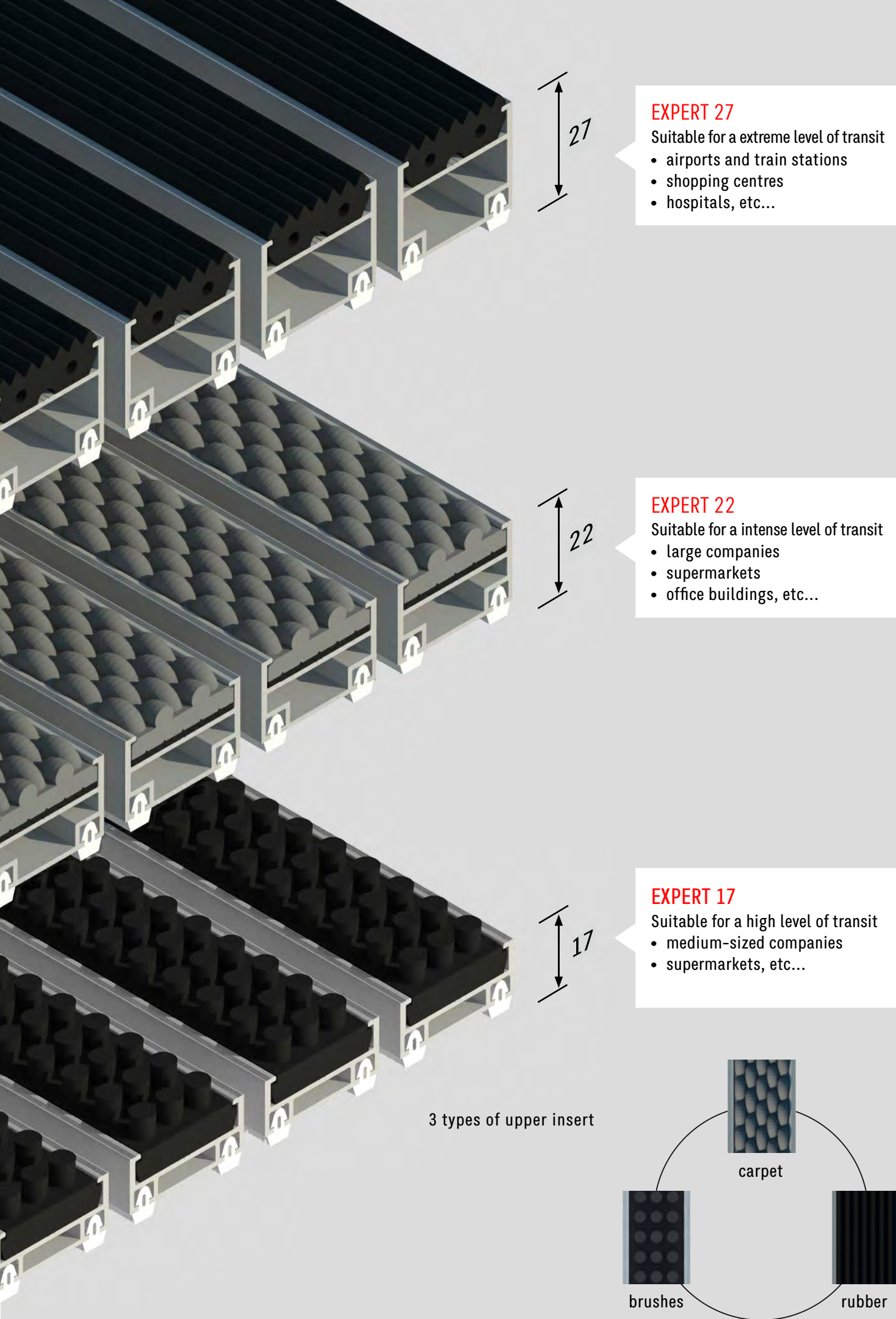


Short lead time

Aluminium profiles are joined together by a high strength PVC joint, which is perforated, to allow dirt and moisture to pass through







## EXPERT at a glance

### High quality performance



Top class model, it was specifically developed to satisfy the most demanding needs or professional requirements



Available in three different profile heights, it's intended for professional needs, which correspond with the highest footfall levels



The innovative connection system between the profiles of EXPERT allows ALL THE DIRT gathered between the profiles to remain deposited on the bottom of the matwell every time the mat is rolled up to perform periodic removal of the dirt



The mechanical properties of the polyamide from which the connection system's hinge is made allow EXPERT to be easily rolled up while at the same time remaining dimensionally stable. Thanks to this innovative connection system, the "accordion effect" of the basic model due to the gap between the join and the profile is eliminated. EXPERT remains dimensionally stable and it maintains its shape and dimensions while avoiding expansion or contraction



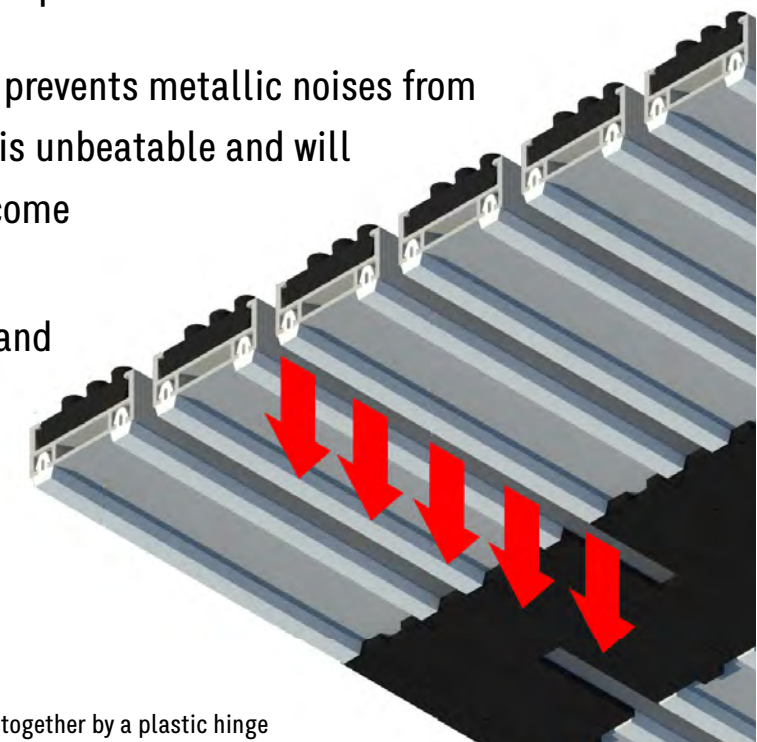
Its acoustic isolation system which prevents metallic noises from coming up when mat is stepped on is unbeatable and will remain effective for many years to come



Exclusively suitable for pedestrian and wheel chair transit



Manufactured under demand



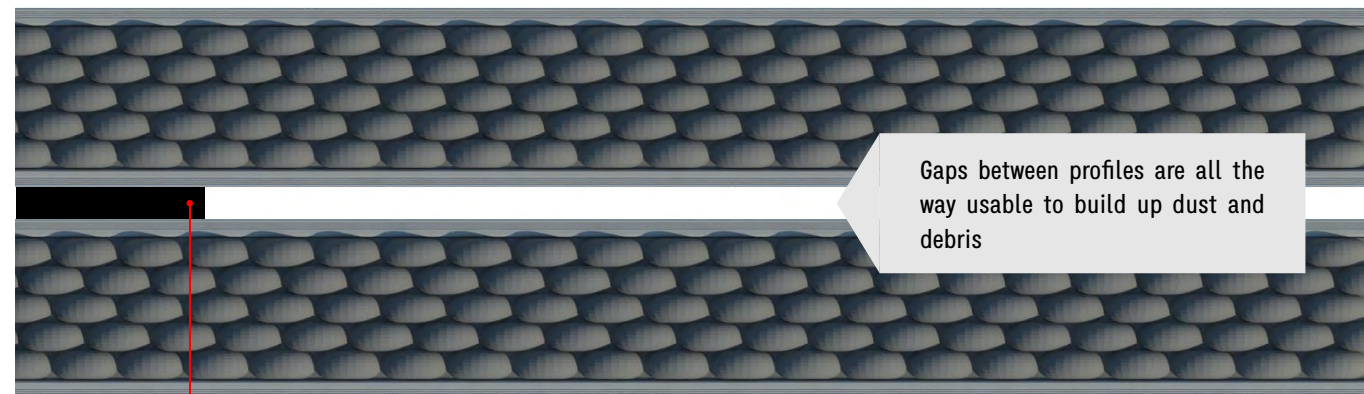
Aluminium profiles are joined together by a plastic hinge



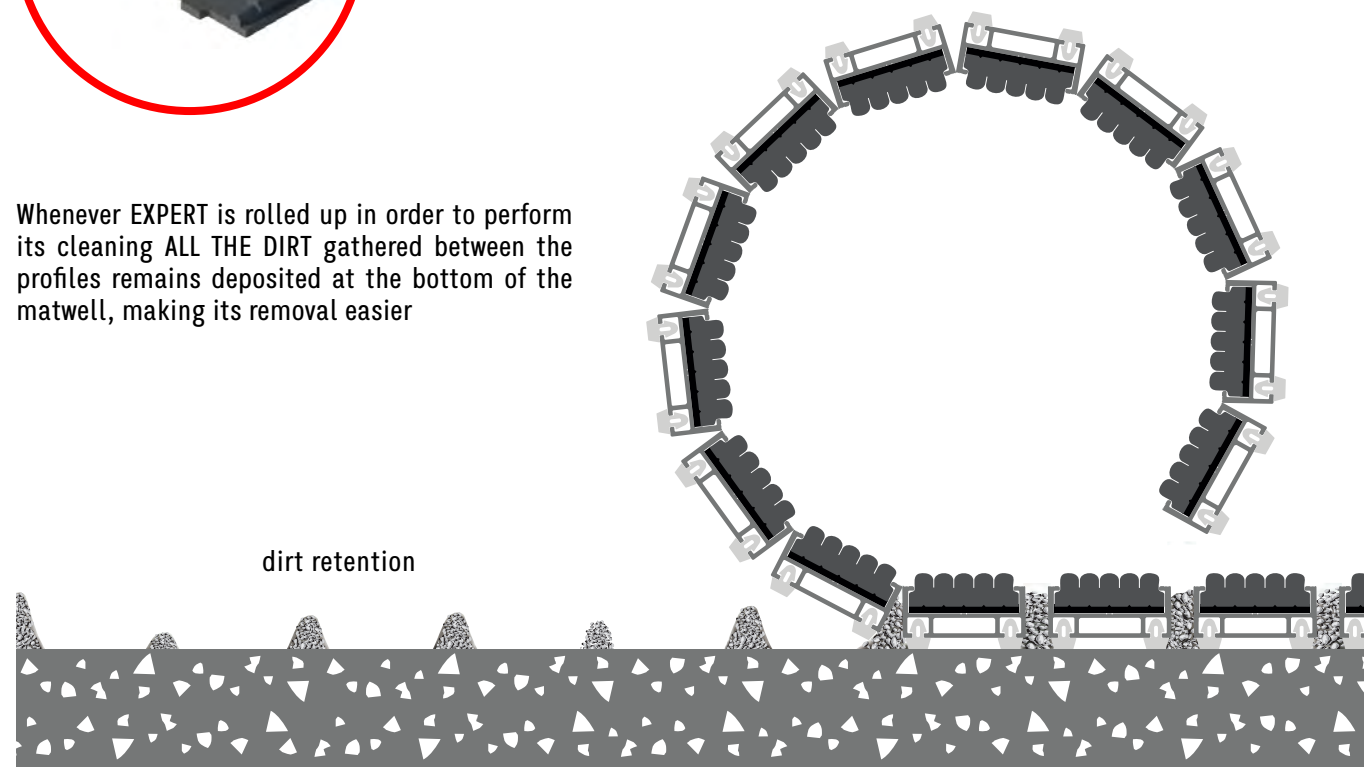
# Advantages of EXPERT

## Why EXPERT is better

The main feature that makes EXPERT superior lies in its innovative connection system between profiles which uses a polyamide hinge, this allows **ALL THE DIRT** gathered between the profiles to remain deposited at the bottom of the matwell, it will suffice to simply roll up the mat and remove the captured dirt accumulated in the matwell in which it is housed



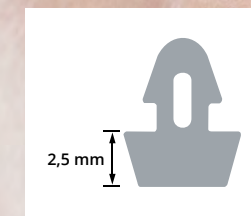
Whenever EXPERT is rolled up in order to perform its cleaning **ALL THE DIRT** gathered between the profiles remains deposited at the bottom of the matwell, making its removal easier



# Advantages of EXPERT

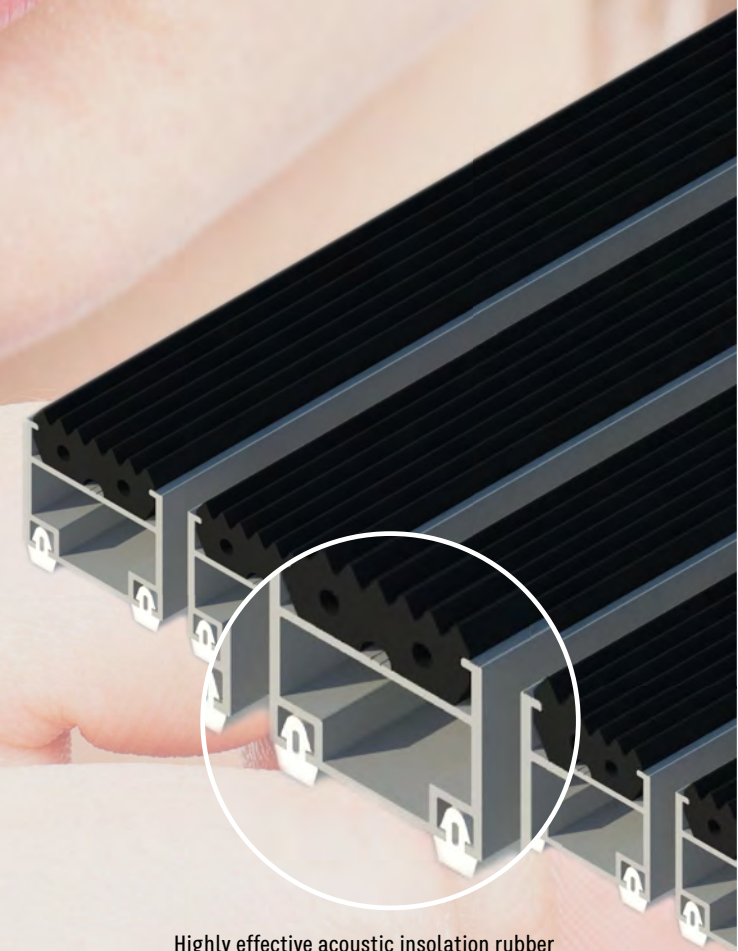
## Silence at the entrance

Any product with characteristics similar to EXPERT has an acoustic insulation system between each profile and the bottom of the matwell in which it is housed. This prevents metallic noises that would occur whenever the mat is stepped on if there were no such system. But not all acoustic insulation systems are equally effective



In the development of EXPERT special emphasis has been placed on sound insulation. In order to achieve total acoustic insulation, a 2,5 mm-thick piece of rubber is inserted by mechanical means into both ends of the bottom of each profile, this prevents any metallic noise from sounding. Acoustic insulation systems that use adhesive foam are less effective than the system used in EXPERT

In this way, EXPERT sets a new standard in its class in relation to the acoustic insulation





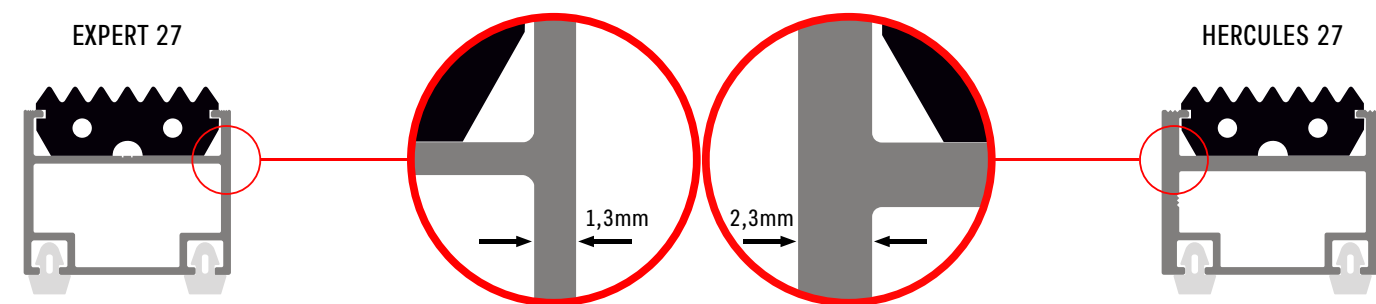
## EXPERT Hercules

### A matter of weight

When planning entrance matting areas of a building or facility it is necessary to get to know first what types of loads will pass through them

Since some entrances will be crossed whether by people or by some kind of wheeled traffic it will be necessary for the entrance mat to withstand all those loads without being deformed

On the basis of EXPERT we have developed HERCULES, which profile has been reinforced in order to be able to withstand wheeled traffic weighing up to 400 kgs / wheel ( dynamic load ) and 7000 kgs / 100cm<sup>2</sup> ( static load )



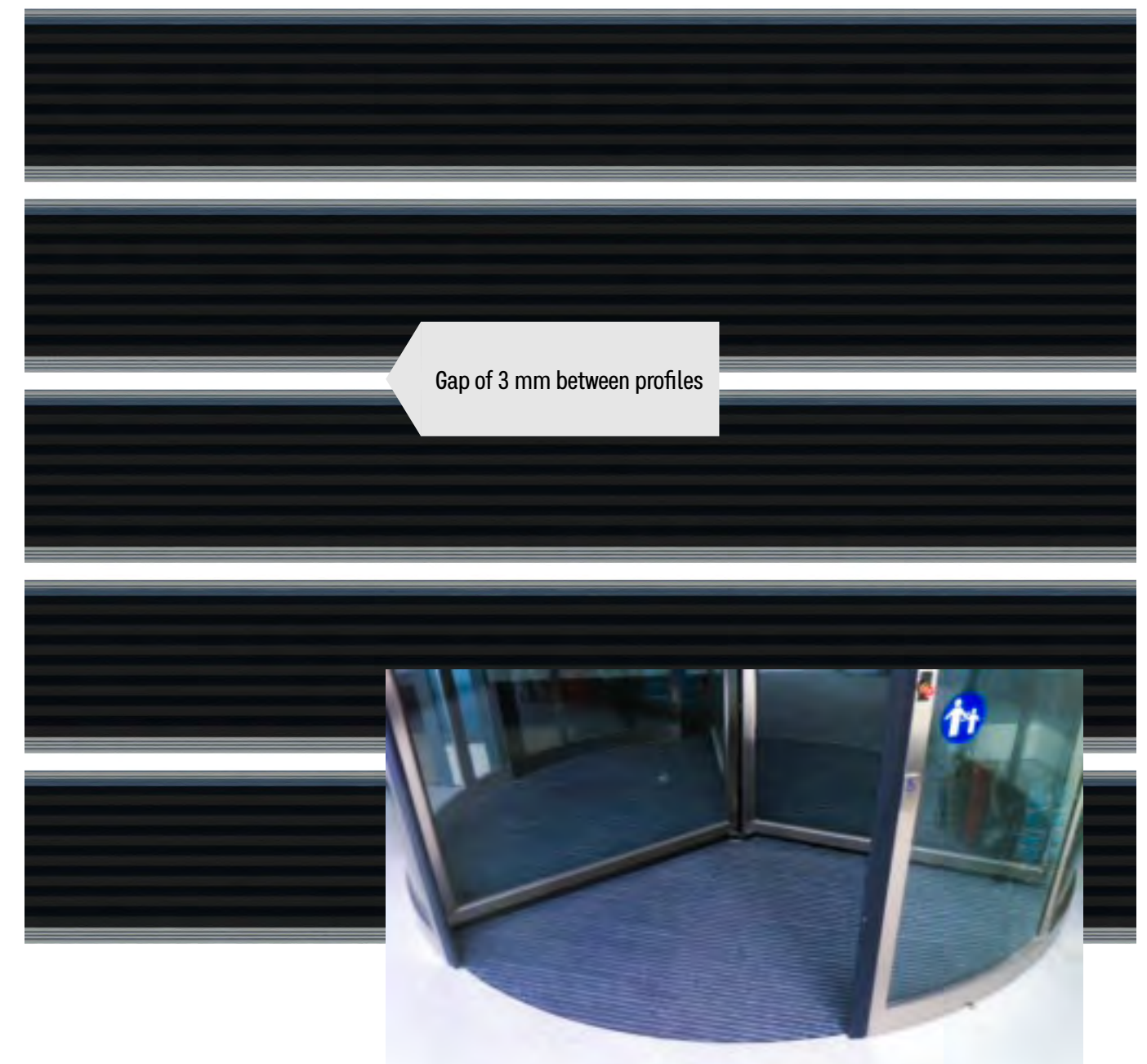
\* Exclusively available in a height of 27mm

## EXPERT Hercules

### Meeting standards

In accordance with EN 16005 for those entrance mats fitted under a revolving door gap between profiles shouldn't exceed 4 mm

Gap between HERCULES profiles is 3 mm, which makes HERCULES the right choice for those cases in need to meet EN standards when it comes to automatic revolving doors





# Types of upper inserts

## Because dirt is not all the same

Dirt dragged by footwear can be classified into three types: coarse dirt, fine dirt and moisture. And each type of dirt requires the most capable material detaching it from footwear

Ideally, every entrance should have three different matting areas: an initial area that retains coarse dirt, a second area that retains fine dirt and moisture, and a final area that retains residual moisture and dirt

REXMAT and EXPERT are both available with the following upper inserts

RUBBER insert, suitable for outdoors, antislip and excellent retaining coarse dirt

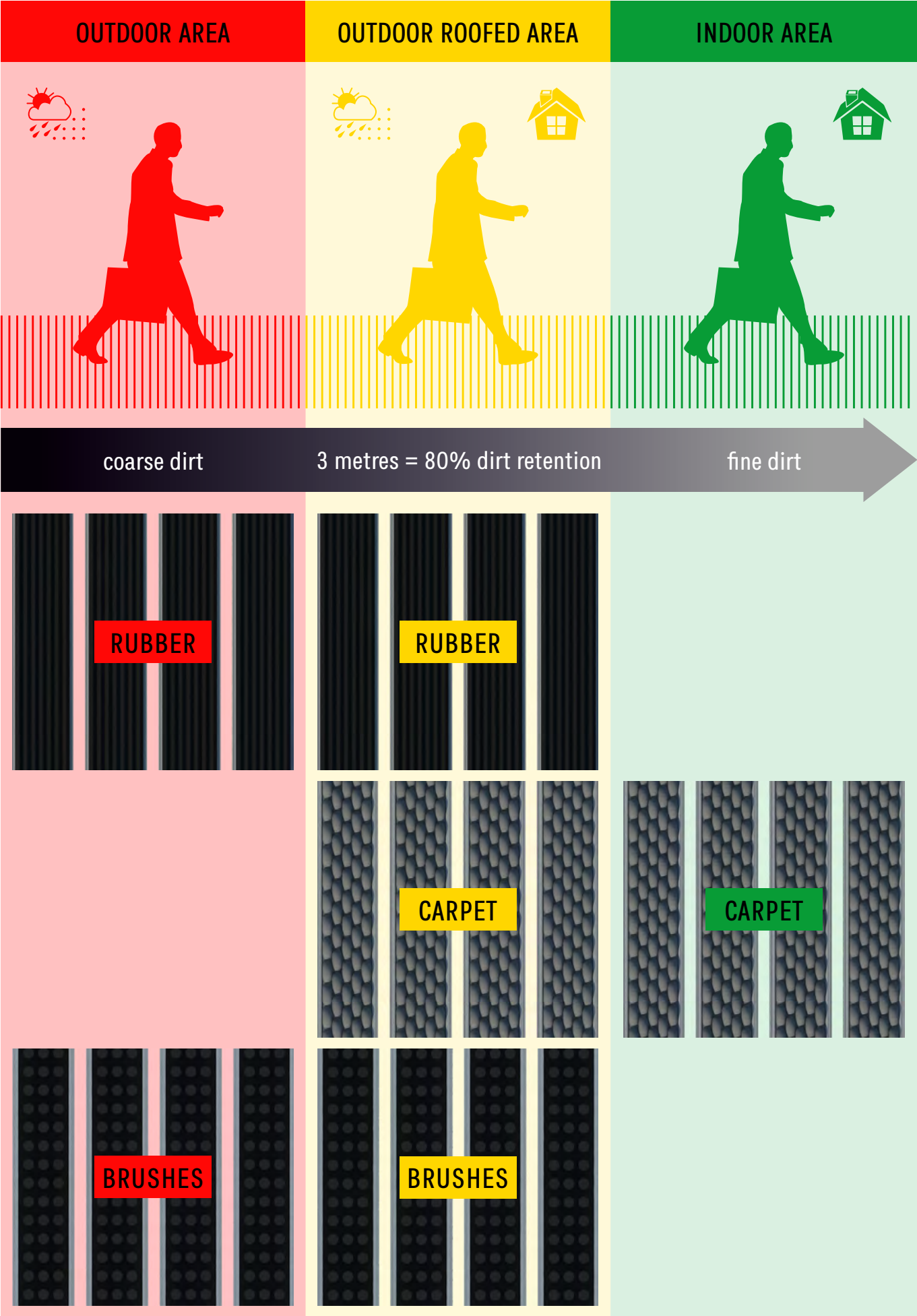
coarse dirt	★★★★★
fine dirt	★★
moisture	★

CARPET insert, suitable for indoors or outdoor roofed areas, excellent retaining fine dirt and moisture

coarse dirt	★★★
fine dirt	★★★★★
moisture	★★★★★

BRUSHES insert, suitable for outdoors, it tends to be combined with rubber or carpet inserts

coarse dirt	★★★★★
fine dirt	★★★
moisture	★





# Colours

## Adaptation to surroundings

Two versions of carpet inserts are available: standard and “heavy duty” whose thickness is 1.8 mm greater than the standard model, which therefore significantly increases its durability

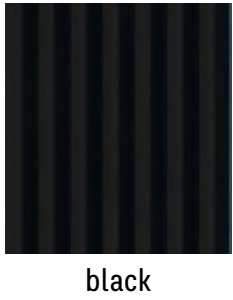
### Standard carpet colour range



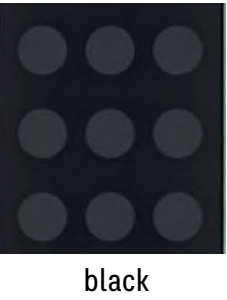
### “Heavy duty” carpet colour range



### Rubber colours



### Brushes colours



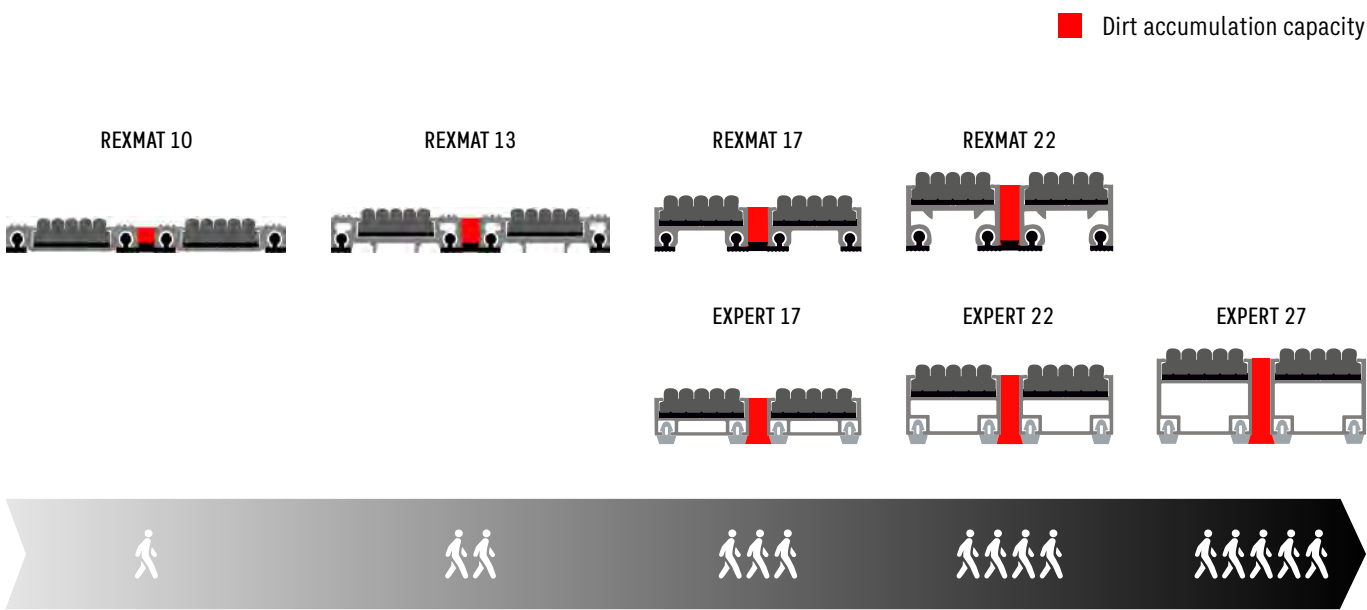


# Choosing profile height and type of upper insert

## What model is for me

### Criteria for choosing profile height

The greater the height of the mat, the greater will be its ability to accumulate dirt between profiles, therefore the dirt deposited in the matwell where the mat is housed will need to be collected less often. The following graph shows how the area where dirt builds up becomes greater ( marked in red ) as the height of the mat increases



The more people that transit an area, the more dirt there will be from footwear. Therefore, those entrances with a high footfall will require a greater profile height than those entrances with a lower transit

### Criteria for choosing upper inserts

Upper insert choice depends on both the location zone and the type of dirt that is intended to retain

Attention: The models with carpet inserts are valid exclusively for indoor use, while the models with rubber or brush inserts are valid for both indoor and outdoor use

For further information review previous section “Types of upper inserts”

LEVEL OF TRANSIT	AREA	OUTDOORS	ROOFED OUTDOORS	INDOORS
EXTREME	Typical uses: <ul style="list-style-type: none"><li>airports, train stations</li><li>shopping centres</li><li>hospitals</li></ul>	EXPERT 27 rubber EXPERT 27 carpet EXPERT 27 brushes HÉRCULES 27 rubber HÉRCULES 27 carpet HÉRCULES 27 brushes	EXPERT 27 rubber EXPERT 27 carpet EXPERT 27 brushes HÉRCULES 27 rubber HÉRCULES 27 carpet HÉRCULES 27 brushes	EXPERT 27 rubber EXPERT 27 carpet EXPERT 27 brush HÉRCULES 22 rubber HÉRCULES 22 carpet HÉRCULES 22 brush
<ul style="list-style-type: none"><li>Suitable for wheeled traffic weighing up to 400 kgs / wheel ( dynamic load ) and 7000 kgs / 100cm2 ( static load )</li><li>It meets EN 16005 ( automatic revolving doors )</li></ul>				
INTENSE	Typical uses: <ul style="list-style-type: none"><li>large companies</li><li>supermarkets</li><li>office buildings</li></ul>	REXMAT 22 rubber REXMAT 22 carpet REXMAT 22 brushes EXPERT 22 rubber EXPERT 22 carpet EXPERT 22 brushes	REXMAT 22 rubber REXMAT 22 carpet REXMAT 22 brushes EXPERT 22 rubber EXPERT 22 carpet EXPERT 22 brushes	REXMAT 22 rubber REXMAT 22 carpet REXMAT 22 brush EXPERT 22 rubber EXPERT 22 carpet EXPERT 22 brush
HIGH	Typical uses: <ul style="list-style-type: none"><li>medium-sized companies</li><li>supermarkets</li></ul>	REXMAT 17 rubber REXMAT 17 carpet REXMAT 17 brushes EXPERT 17 rubber EXPERT 17 carpet EXPERT 17 brushes	REXMAT 17 rubber REXMAT 17 carpet REXMAT 17 brushes EXPERT 17 rubber EXPERT 17 carpet EXPERT 17 brushes	REXMAT 17 rubber REXMAT 17 carpet REXMAT 17 brush EXPERT 17 rubber EXPERT 17 carpet EXPERT 17 brush
MEDIUM	Typical uses: <ul style="list-style-type: none"><li>small businesses</li><li>neighbourhood communities</li></ul>	REXMAT 13 rubber REXMAT 13 carpet REXMAT 13 brushes	REXMAT 13 rubber REXMAT 13 carpet REXMAT 13 brushes	REXMAT 13 rubber REXMAT 13 carpet REXMAT 13 brush
LIGHT	Typical uses: <ul style="list-style-type: none"><li>personal dwellings</li><li>small shops</li></ul>	REXMAT 10 rubber REXMAT 10 carpet REXMAT 10 brushes	REXMAT 10 rubber REXMAT 10 carpet REXMAT 10 brushes	REXMAT 10 rubber REXMAT 10 carpet REXMAT 10 brush



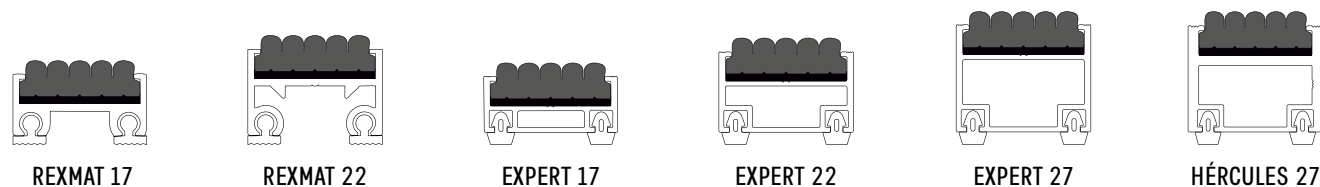
# Reproduction of designs

## First impressions count

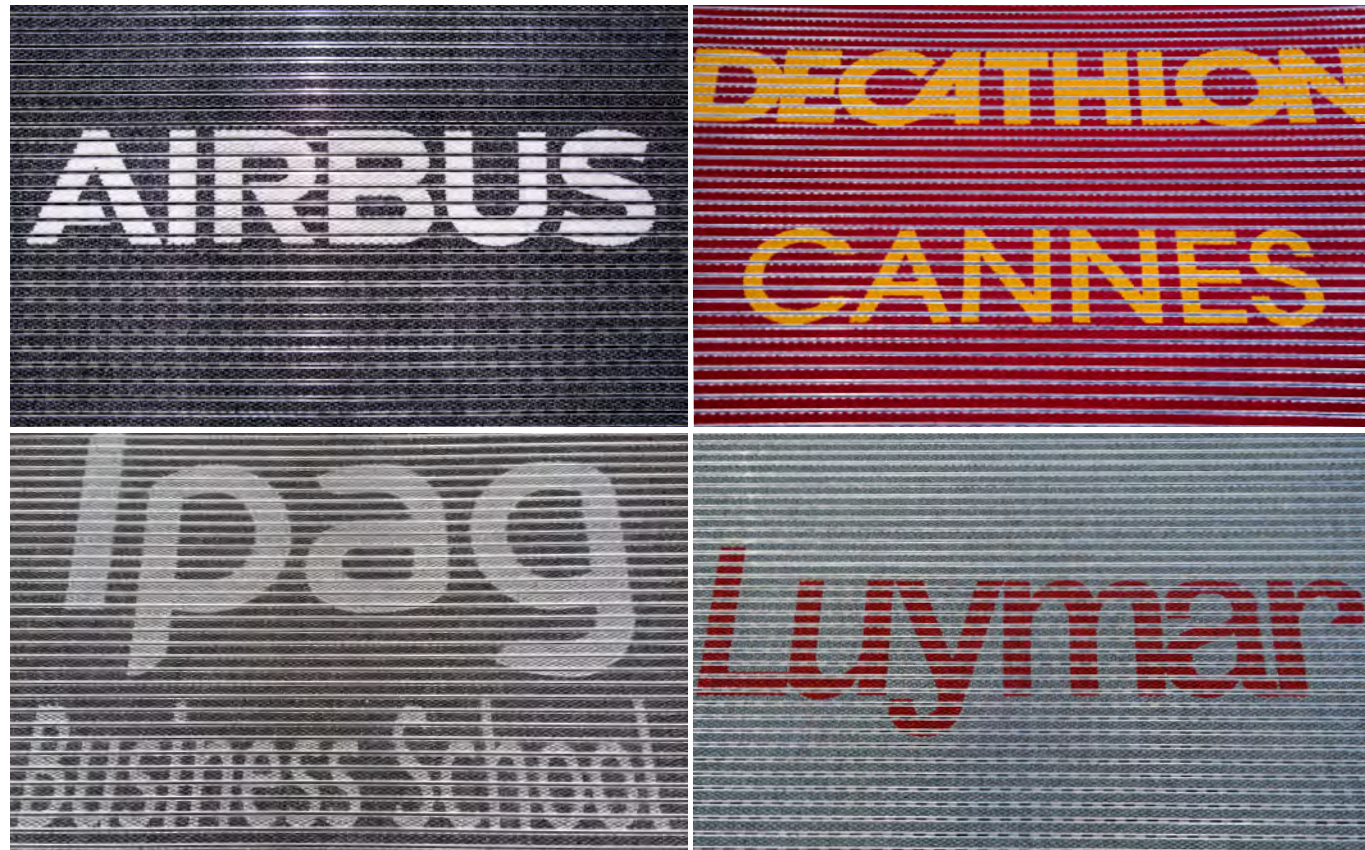
With REXMAT, you can also reproduce your corporate logo to reflect the identity of your brand or company

There are certain limitations to the reproduction of corporate logos:

- due to the separation between profiles, it is not possible to reproduce very fine horizontal strokes, because they would hardly be distinguishable. Therefore, our technical department needs to examine the logo or design beforehand to see if it is possible to fully or partially reproduce it
- This option is only available for carpet insert models ranging from 17mm onwards



- The colours for both the logo and the background are the ones available in our carpet colour range. It is not possible to reproduce specific colours

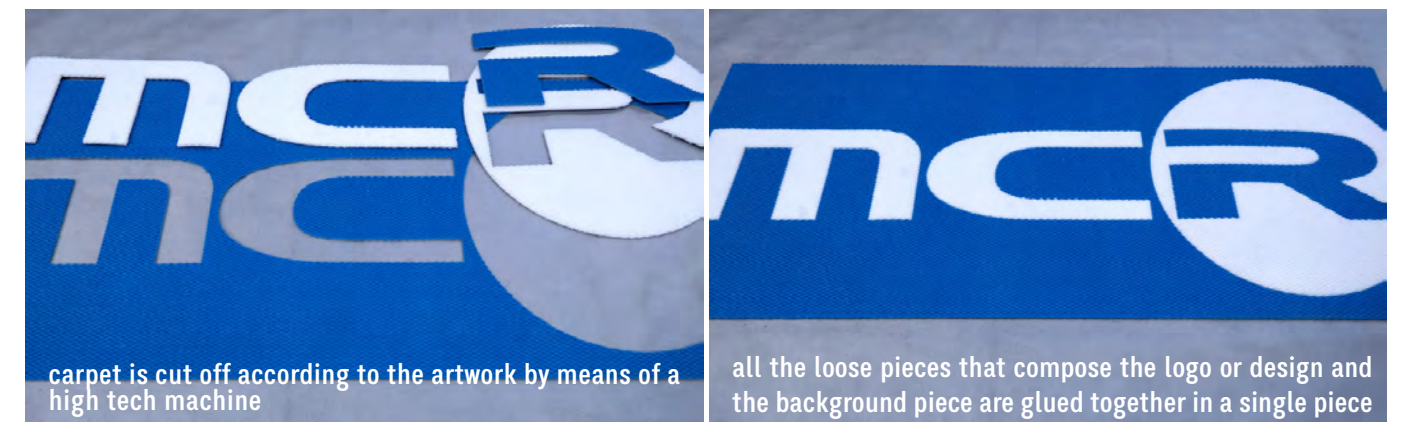


# Reproduction of designs

## 21st century artisans

To reproduce a design or logo takes an intricate semi-handcrafted process

It's carried out by using die cutting technique. This technique guarantees the design or logo to remain fully visible for its entire existence



Once we have the single piece of carpet done we proceed to cut it into strips, which are then inserted one by one into its corresponding aluminium profile until completing the whole mat





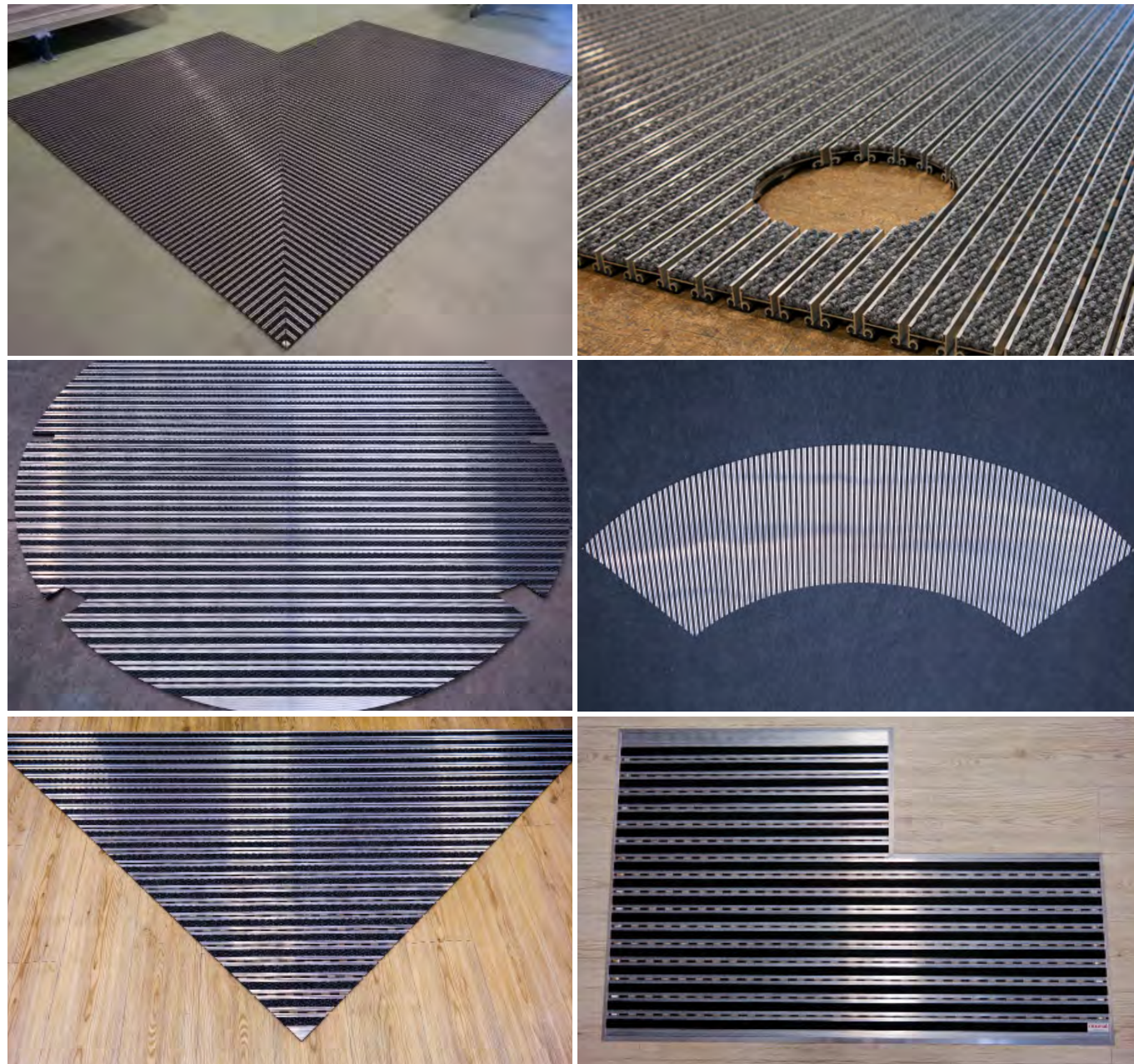
# Special shapes

## Any shape can be done

We have all the necessary cutting machinery for the manufacture of mats of any size and shape, however complex they may be

For the manufacture of any mat with a non-rectangular shape there are two alternatives:

1. from a blueprint made by a CAD / CAM programme
2. by means of a template taken in situ, cutting a rigid material ( for example, a piece of PVC flooring, or carpet ) in the shape of the matwell

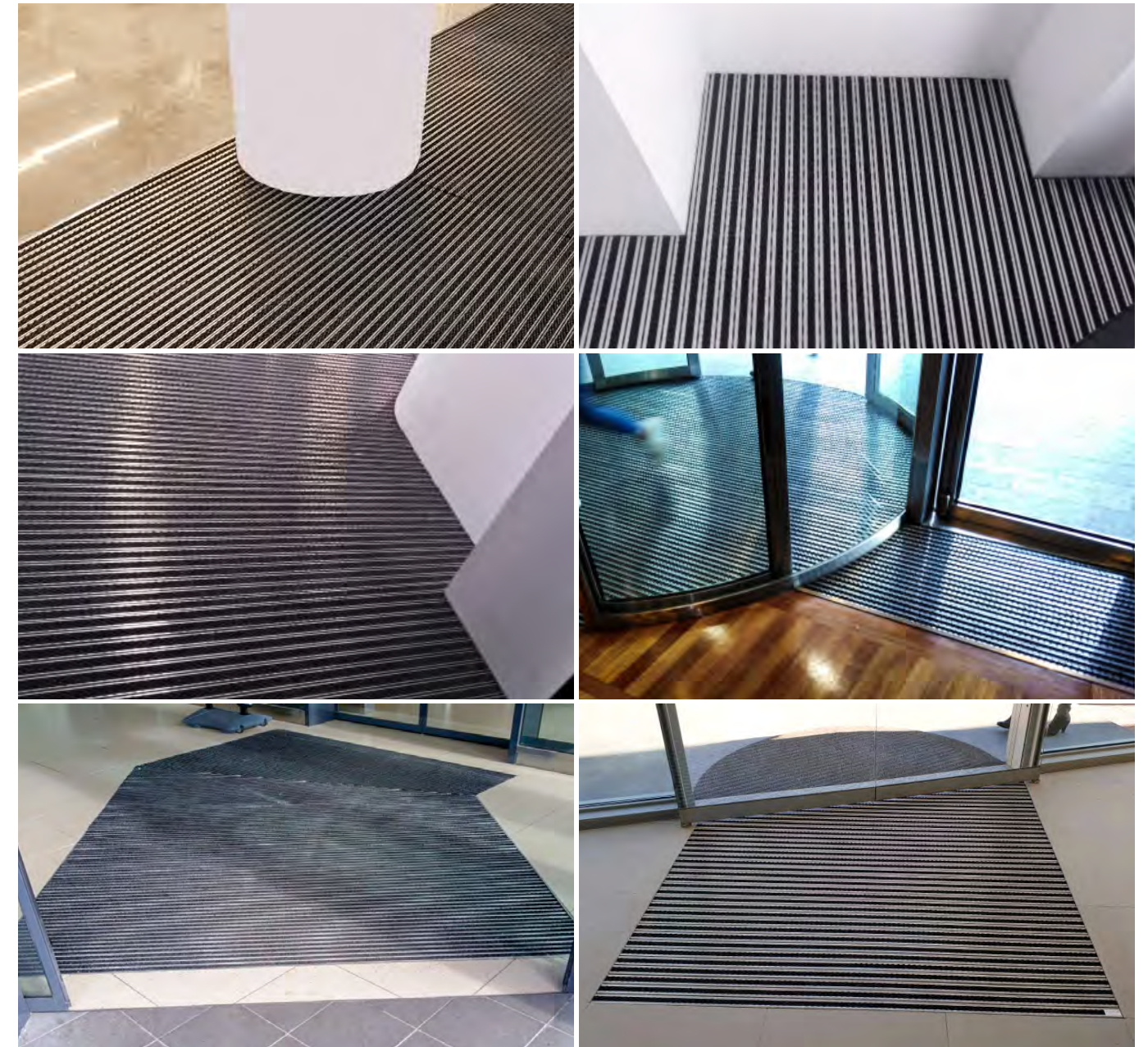


# Special shapes

## Serving architecture

Any size or shape can be manufactured in order to be in harmony with the architectural environment

In this way, REXMAT entrance mat systems help to create a harmonious first impression at the entrance of a building, streamlining it with the general architectural concept. This enhances the overall impression thereby elevating it to a higher standard

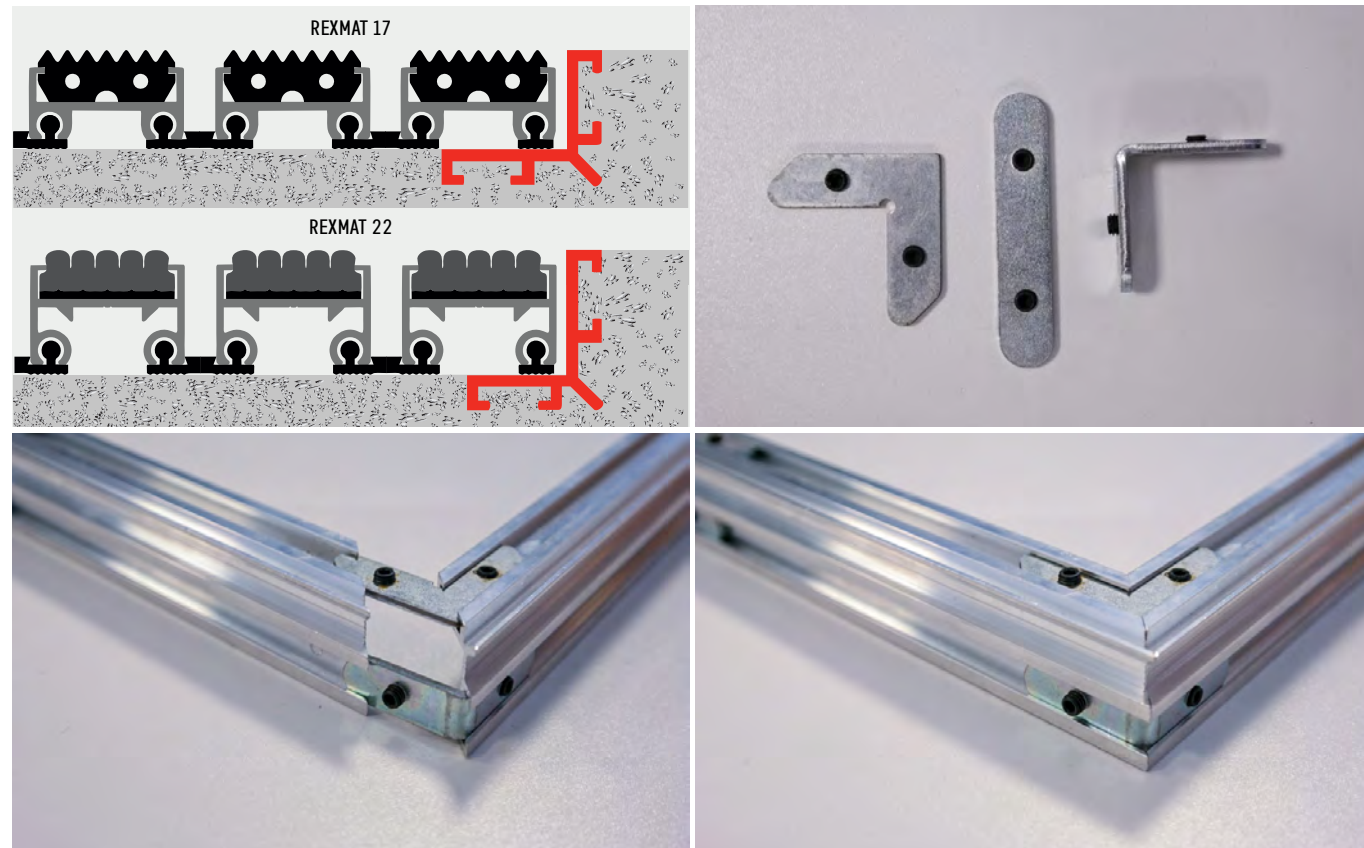




## Accessories

### REXMAT L-shaped profile for construction of built-in matwell frame

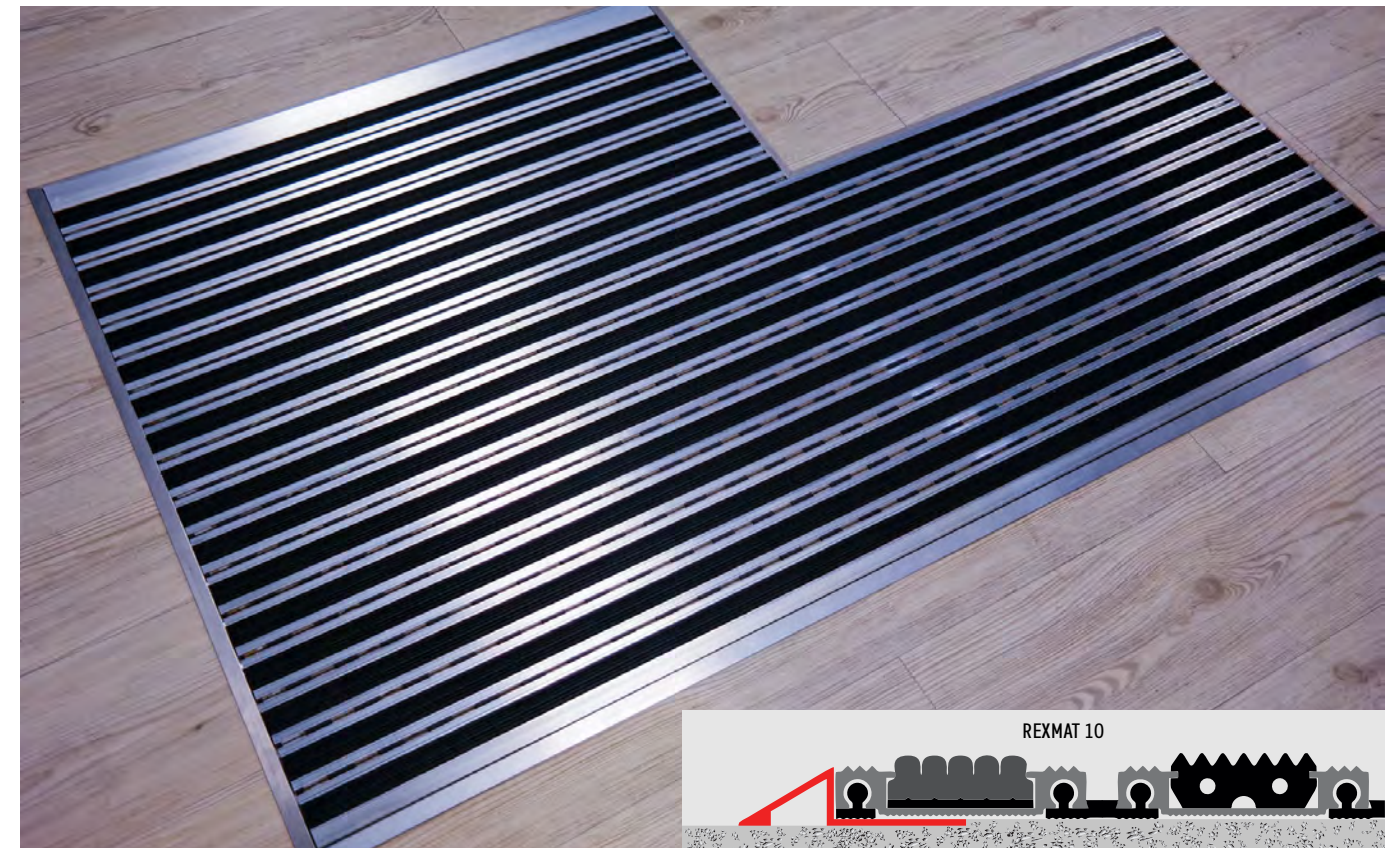
- Aluminium L-shaped profile for construction of built-in matwell frame. It is optional, its placement is not essential
- It is reversible ( unequal sides ), in one position it is valid for REXMAT 17, and in the other it is valid for REXMAT 22
- Available in 3-metre strips. It is supplied in its original format, or in already mitred sections, completely finished, and with the necessary connecting pieces ( corner joint or straight joint ). In this way, at the installation point it will only be necessary to join the sections and to tighten the Allen screws that are built into the connecting pieces
- Designed to be grouted with mortar



## Accessories

### REXMAT ramp profile for creating a matwell over the floor

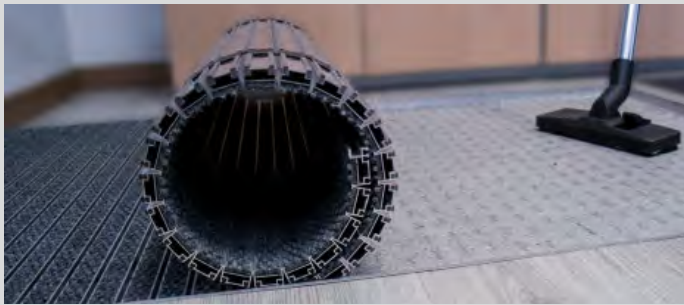
- Aluminium ramp profile for creating a matwell over the floor, valid exclusively for 10 mm high doormats, useful for those cases where there is no matwell in which to accommodate the doormat
- Available in 2.5 metre strips. It is supplied in its original format, or in sections already mitred and ready to be fixed to the ground
- It doesn't come assembled to the mat
- Self-adhesive, to be easily fixed to the floor ( can also be fixed with screws )





Cleaning recommendations

Cleaning intervals should be established according to traffic. However, our general recommendations are



- cleaning every three days: vacuum or sweep the surface of the carpet, to remove dirt deposited between the grooves
- Biweekly cleaning: roll up the carpet and collect the accumulated dirt in the matwell
- Monthly cleaning: clean with pressurized water



Subject to technical changes  
We assume no liability for printing errors  
Last updated: September 2021